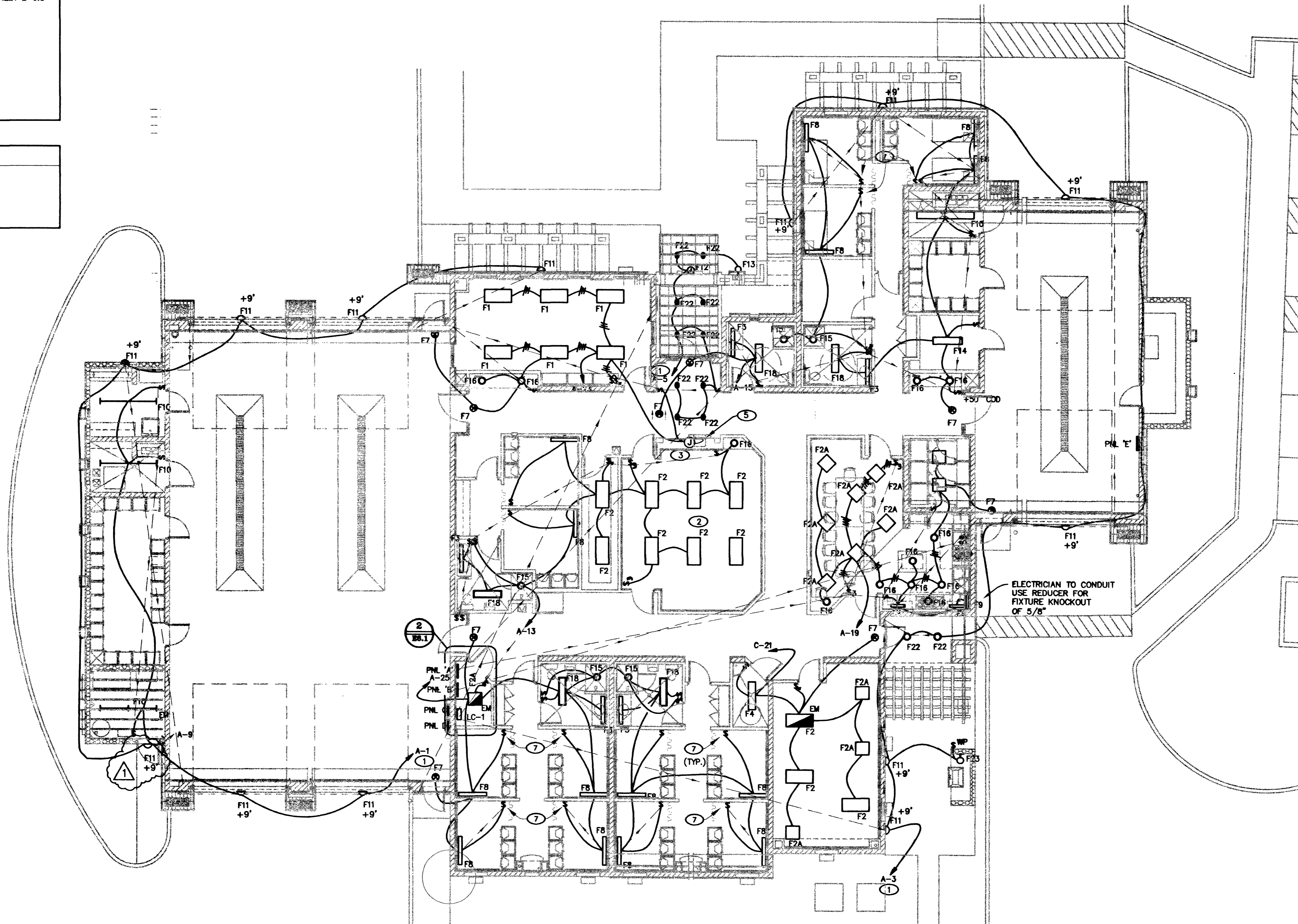


SHEET NOTES

- ① VIA LC-1. USE #10 WIRES THROUGHOUT CKT.
 - ② LIGHTING IN DAY ROOM TO BE CONTROLLED BY TWO THREE WAY SWITCHES.
 - ③ PROVIDE FLUSH CEILING MOUNTED JUNCTION BOX FOR ENTRY WAY LIGHTING.
 - ④ WALL MOUNTED SWITCHES. LOCATE ADJACENT TO THE RANGE. FOR HOOD LIGHTS AND EXHAUST & EVAPORATIVE COOLER MOTOR CONTROL. SEE SCHEMATICS ON SHEET E-6.3
 - ⑤ USE (2) MR16 LIGHTS IN SOFFIT OF TROPHY CASE
- ⑦ OFFSET SWITCH TO AVOID PRIVACY CURTAIN.

SHEET GENERAL NOTES

- 1. REFER TO ARCHITECTURAL ELEVATIONS FOR MOUNTING HEIGHT AND LOCATION FOR ALL EXTERIOR FIXTURES.



ELECTRICAL LIGHTING PLAN

SCALE: 1/8"=1'-0"

5724



REVISOR
7/3/02 CLV REV
CONSULTANT



2800 SO. RANCHO RD.
LAS VEGAS, NEVADA 89102
(702) 971-6164

CITY OF LAS VEGAS, NEVADA
FIRE STATION #44
ELECTRICAL LIGHTING PLAN

DEPARTMENT OF PUBLIC WORKS
ARCHITECTURAL SERVICES
400 EAST STRAWHAT AVENUE
LAS VEGAS, NEVADA 89101
PHONE: (702) 229-8838
FAX: (702) 886-2232
TDD: (702) 886-8108

DESIGN ENGINEER CONSULTANT

DRAWN	AOA
FILE	
DATE	4/8/01
SCALE	AS SHOWN
PROJECT	63097
SHEET NO	920F106

E-1.1

ALL RIGHTS RESERVED. NO PART OF THIS DOCUMENT IS TO BE REPRODUCED OR TRANSMITTED IN ANY FORM OR BY ANY MEANS, ELECTRONIC OR MECHANICAL, INCLUDING PHOTOCOPYING, RECORDING, OR BY ANY INFORMATION STORAGE AND RETRIEVAL SYSTEM. THE CITY OF LAS VEGAS, NEVADA, IS THE SOLE PROPRIETOR OF THIS DOCUMENT. THE CITY OF LAS VEGAS, NEVADA, IS NOT RESPONSIBLE FOR ANY DAMAGE TO PERSONS OR PROPERTY, INCLUDING THE CITY OF LAS VEGAS, NEVADA, ARISING FROM THE USE OF THIS DOCUMENT.