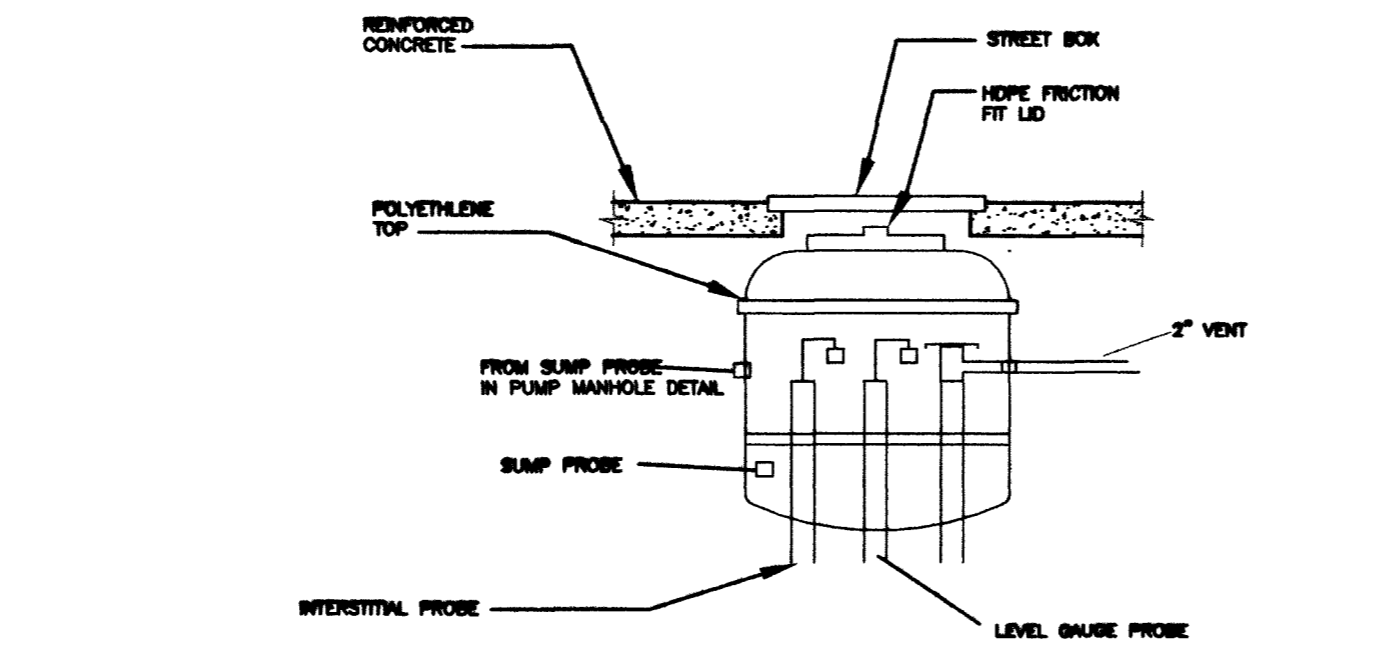
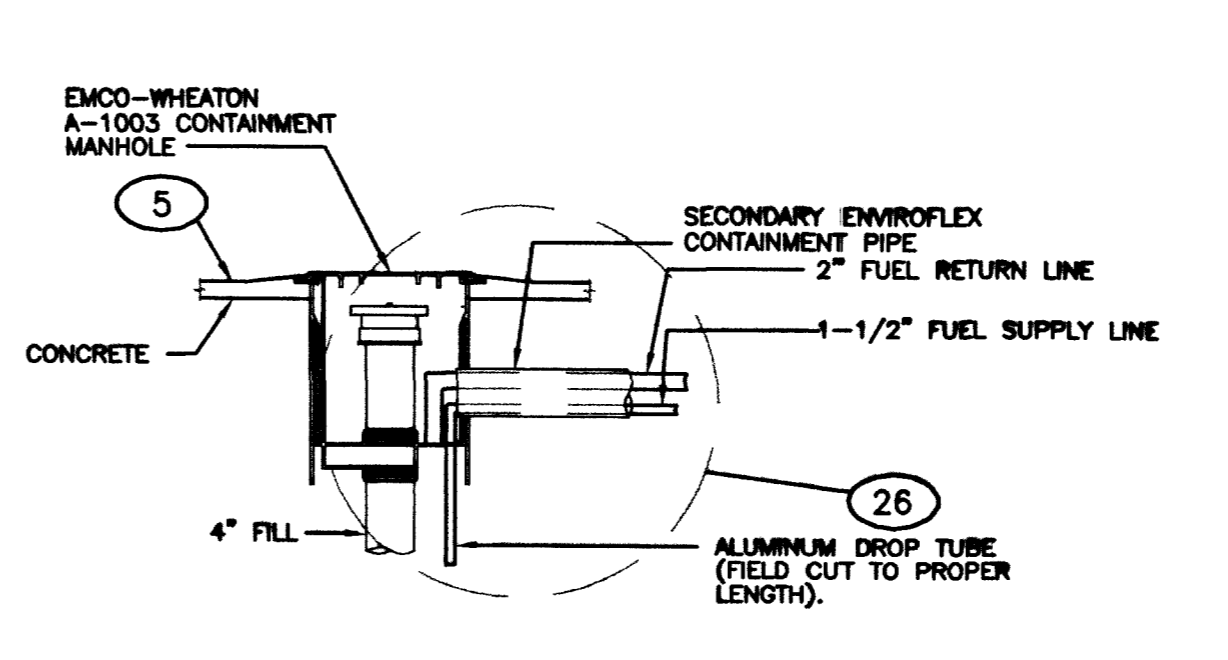


- KEYED NOTES:**
- ROUTE 3/4" CW AND CA LINES OUT TO SERVICE ISLAND WITHIN 4" SLEEVE BELOW PARKING LOT. SEE CIVIL DRAWINGS FOR CONTINUATION.
 - 2" DIAMETER FUEL LINE TO ISLAND.

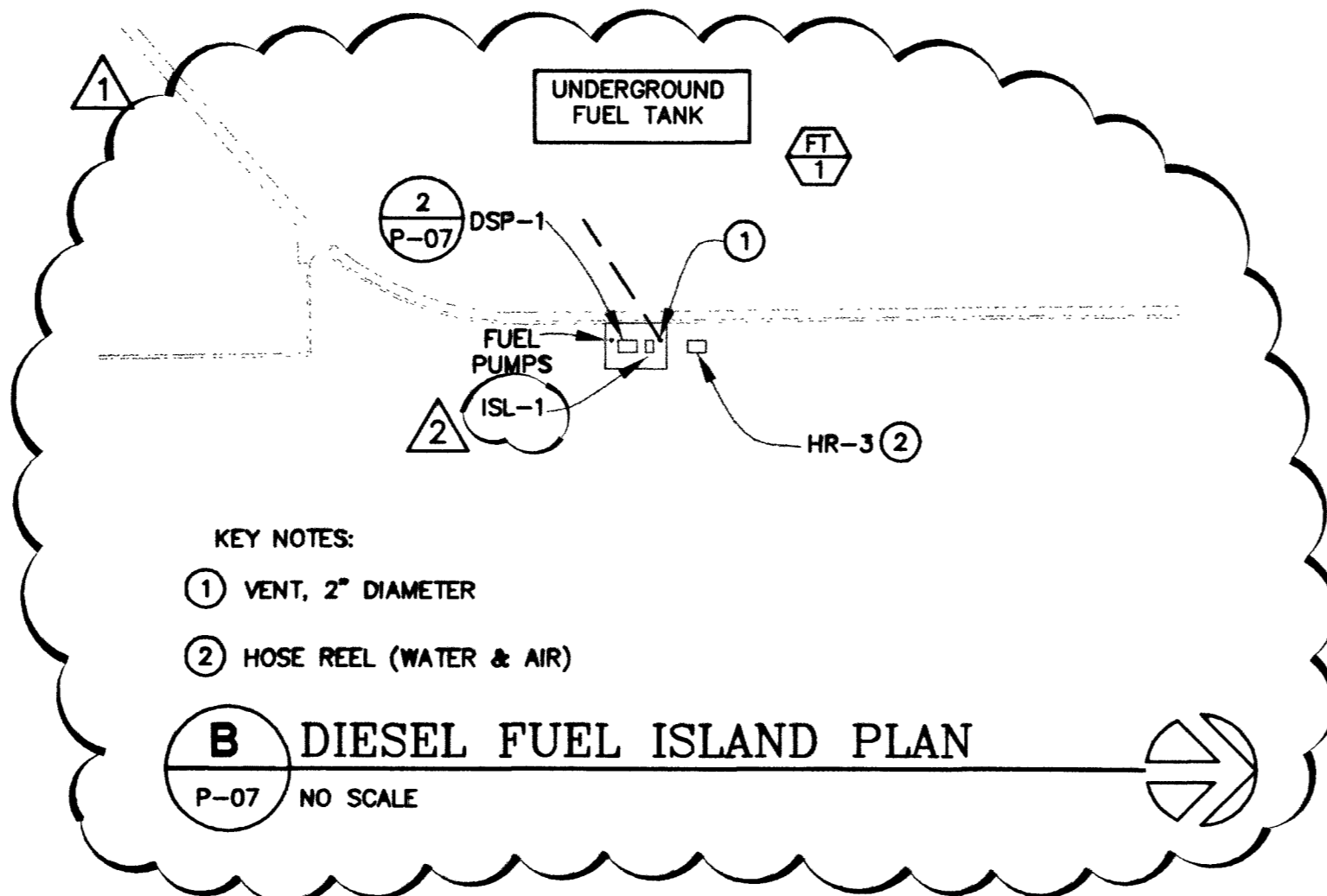
A SITE PLAN
P-07 NO SCALE



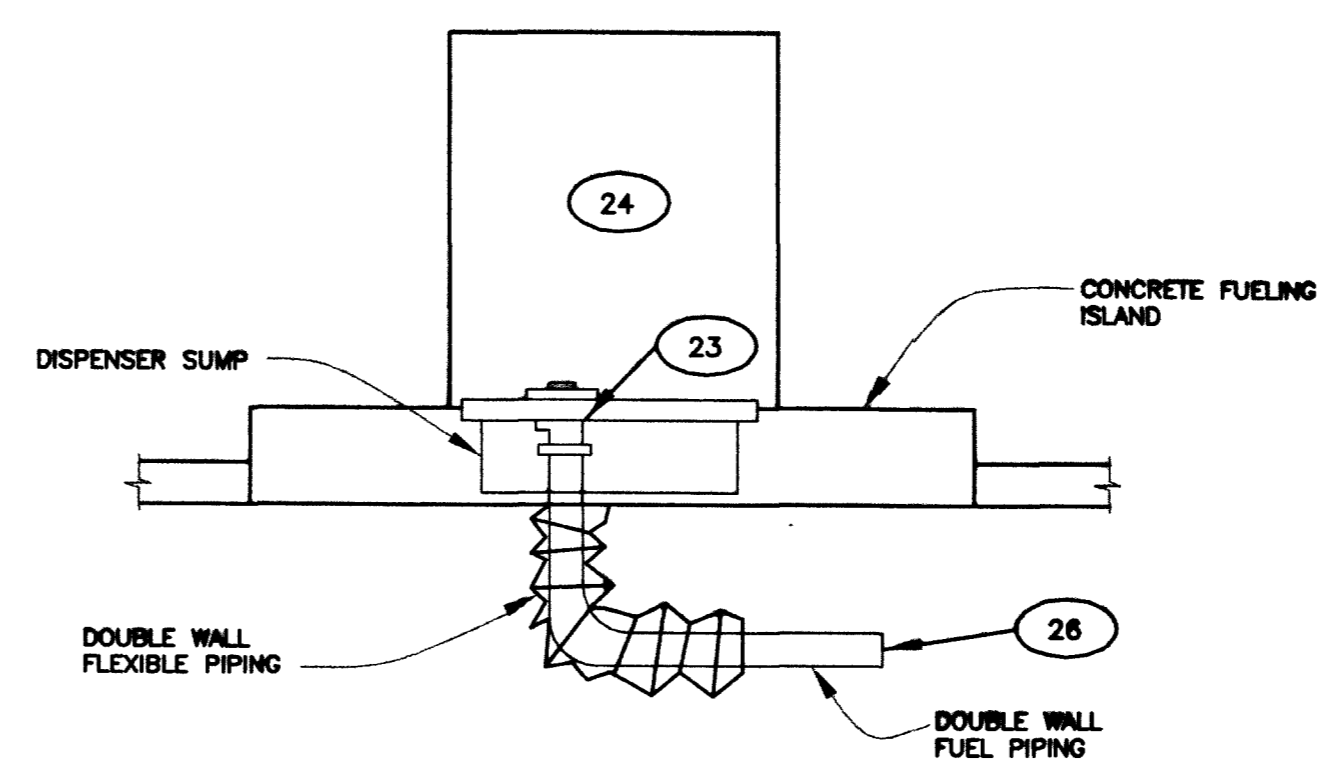
5 PROBE MANHOLE DETAIL
P-07 NO SCALE



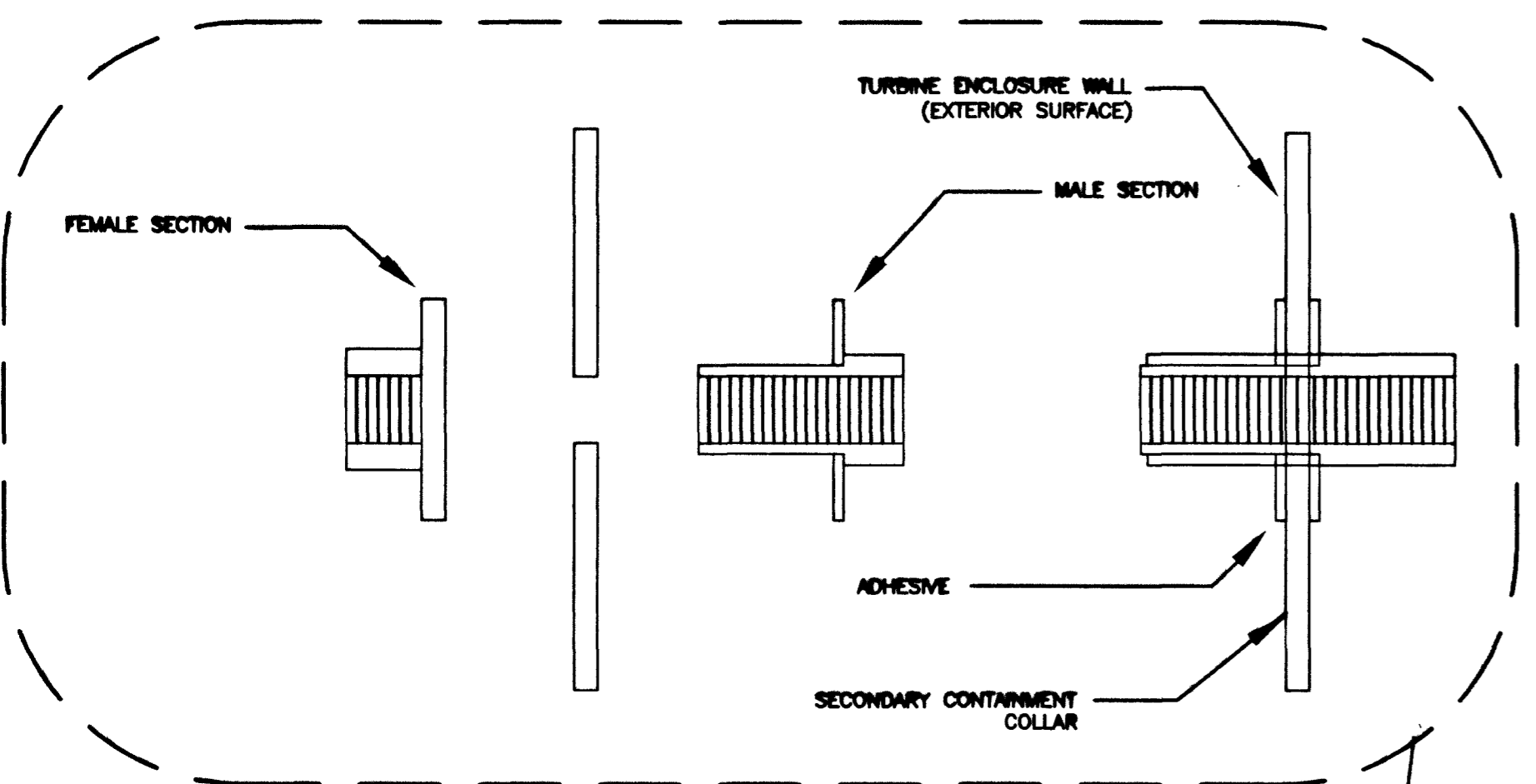
1 FUEL TANK FILL POINT DETAIL
P-07 NO SCALE



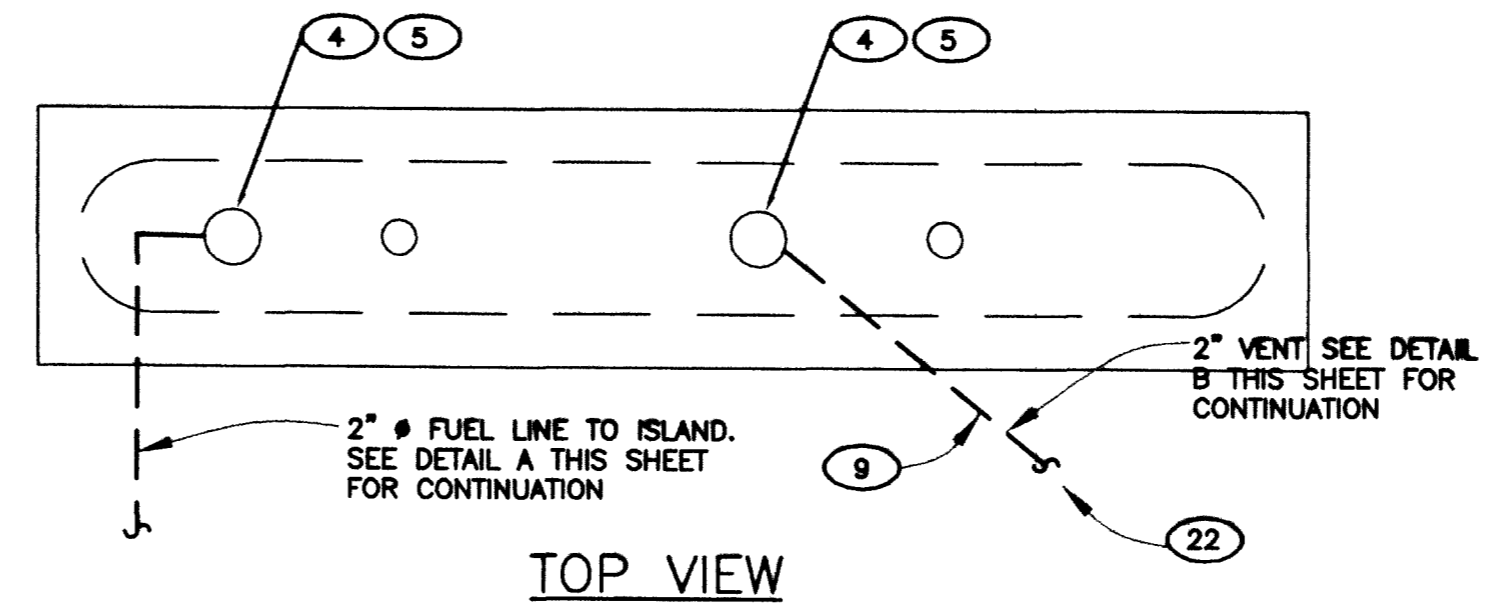
- KEY NOTES:**
- VENT, 2" DIAMETER
 - HOSE REEL (WATER & AIR)
- B DIESEL FUEL ISLAND PLAN**
P-07 NO SCALE



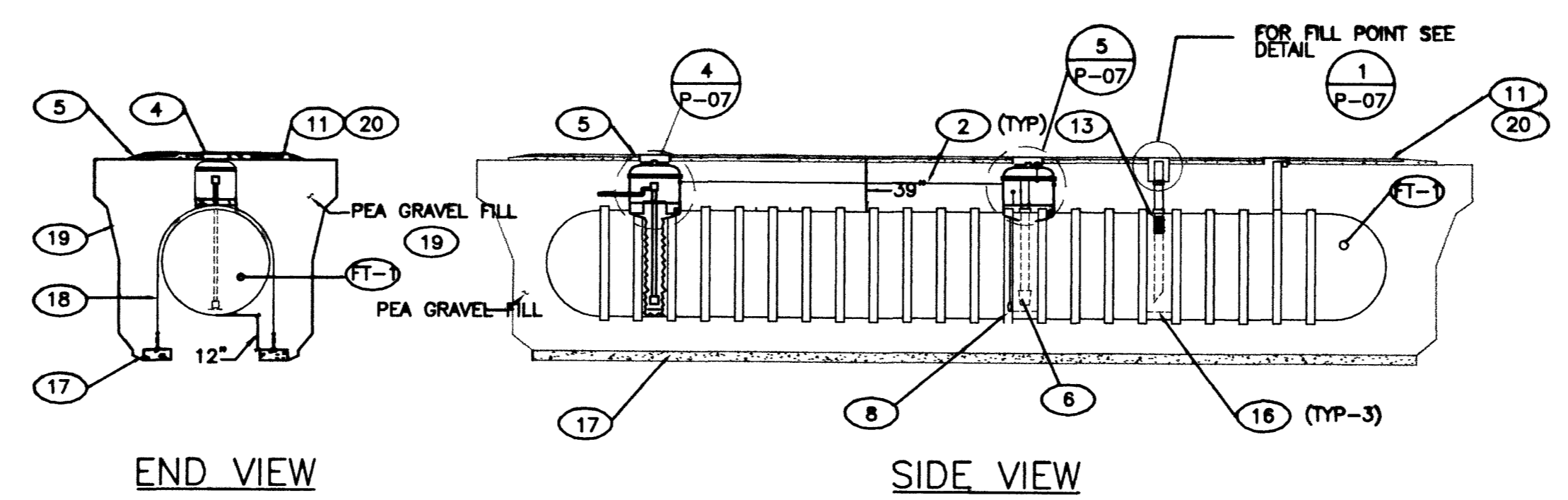
2 FUEL DISPENSER ROUGH-IN DETAIL
P-07 NO SCALE



4 PUMP MANHOLE DETAIL
P-07 NO SCALE



TOP VIEW



END VIEW

SIDE VIEW

3 UNDERGROUND FUEL STORAGE TANK
P-07 NO SCALE

- Sheet Key Notes:**
- DOUBLE WALL FUEL PIPING TO DISPENSER, SLOPE 1/4"/FT MIN. BACK TO FUEL PUMP.
 - LEAK DETECTION AND TANK LEVEL MONITORING SYSTEM CONDUITS (REF.) ROUTE TO TELEPH BACK BOARD.
 - SUBMERSIBLE FUEL PUMP WITH LEAK DETECTOR.
 - 36" MANWAY AND FRAMING.
 - PROVIDE 1" RAISED LIP AROUND MANWAY COVER.
 - FUEL LEVEL GAUGE.
 - NOT USED.
 - INTERSTITIAL TANK PROBE AND MONITOR.
 - 2" VENT. SEE PLANS FOR CONTINUATION.
 - ELECTRONIC FUEL STATION CONTROL PANEL (LOCATED ON EAST WALL AT APPARATUS BAY) INSTALL PER MANUFACTURER'S INSTRUCTIONS.
 - TANK COVER PAD AND MANWAYS TO BE DESIGNED FOR H-20 LOADING.
 - FLEXIBLE HOSE CONNECTOR.
 - OVERFILL PREVENTION DEVICE- AROO GUARDIAN.
 - OVERFLOW PREVENTION VALVE.
 - TANK LEVEL MONITORING AND LEAK SENSING PANEL VEEDER-ROOT TLS-300. (LOCATED ON EAST WALL AT APPARATUS BAY) INSTALL PER MANUFACTURER'S INSTRUCTIONS. NOT INCLUDED IN CONTRACT (NIC), OWNER FURNISHED. CONDUIT AND CABLES PROVIDED BY GENERAL CONTRACTOR. COORDINATE WITH VEEDER-ROOT TLS-300 INSTALLER.
 - 8"x8"x1/4" THICK STEEL EPOXY ENCAPSULATED STRIKER PLATE.
 - 12" THICK DEADMAN ANCHOR WITH 2 #6 BARS AT 12" O.C., ANCHOR DIMENSION TO BE 2'-0" LONGER THAN TANK.
 - HOLD DOWN STRAPS AND TIRN BUCKLES TYPE, SIZE, QTY. AND LOCATIONS AS PER MANUFACTURER'S RECOMMENDATIONS.
 - HOLE EXCAVATION, BACKFILL, ANCHORING AND COVERAGE SHALL BE IN STRICT COMPLIANCE WITH TANK MANUFACTURER'S INSTALLATION INSTRUCTIONS AS THEY APPLY TO THIS APPLICATION AND TRAFFIC PATTERNS.
 - CONCRETE PAD REQUIREMENTS SHALL BE COORDINATED WITH TANK MANUFACTURER PRIOR TO BEGINING WORK.
 - NOT USED.
 - PITCH BACK TO TANK @ 1/4"/FT.
 - U.L. LISTED UNDER PUMP EMERGENCY SHUTOFF VALVE, EMCO-WHEATON A80 SERIES WITH STABILIZER BAR.
 - SINGLE HOSE DISPENSER.
 - NOT USED.
 - CONTRACTOR SHALL PROVIDE BULKHEAD FITTINGS, SUMP SADDLES PIPE KIT, TANK FITTINGS, PLUGS, ADAPTERS, COUPLINGS AND INSERTS AS REQUIRED.



REVISIONS

2	12/14/01	REVISIONS
8	8-27-01	ADJUSTMENTS

CONSULTANT

DECOR ENGINEERING

2800 SC. RANCHO RD.
LAS VEGAS, NEVADA 89108
(702)871-5154

CITY OF LAS VEGAS, NEVADA
FIRE STATION #44
MECHANICAL SITE PLAN

DEPARTMENT OF PUBLIC WORKS
ARCHITECTURAL SERVICES

400 EAST STEWART AVENUE
LAS VEGAS, NEVADA 89101
PHONE: (702) 229-8533
FAX: (702) 386-9232
TDD: (702) 386-9208

DESIGN ENGINEERING CONSULTANT

DRAWN: KJVL
DATE: 7/15/01
SCALE: AS SHOWN
PROJECT: 030.97
SHEET NO: 89 OF 06
P-07

Q:\Projects\2001\0000241 FIRE STATION #44\MECH-P-07.dwg, 08/14/2003 04:09:08 PM, Administrator