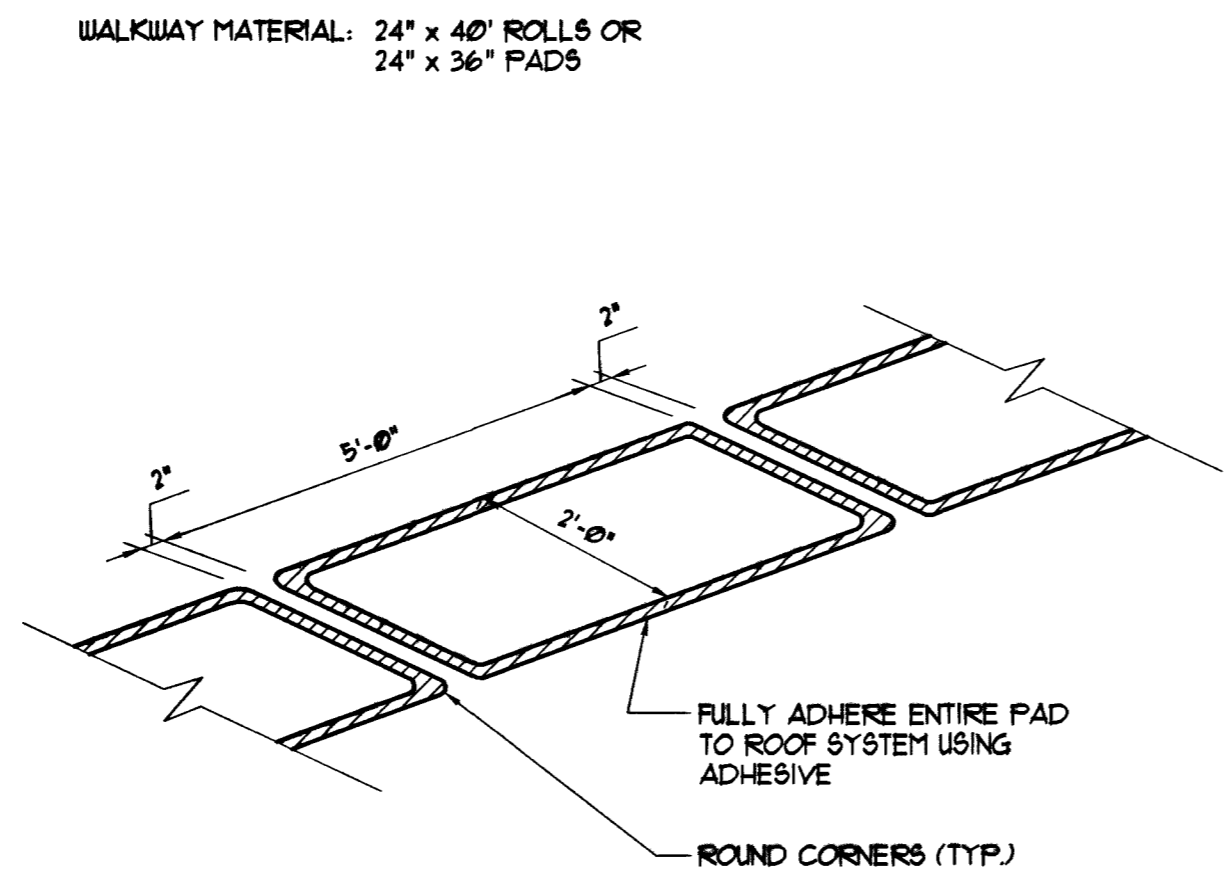
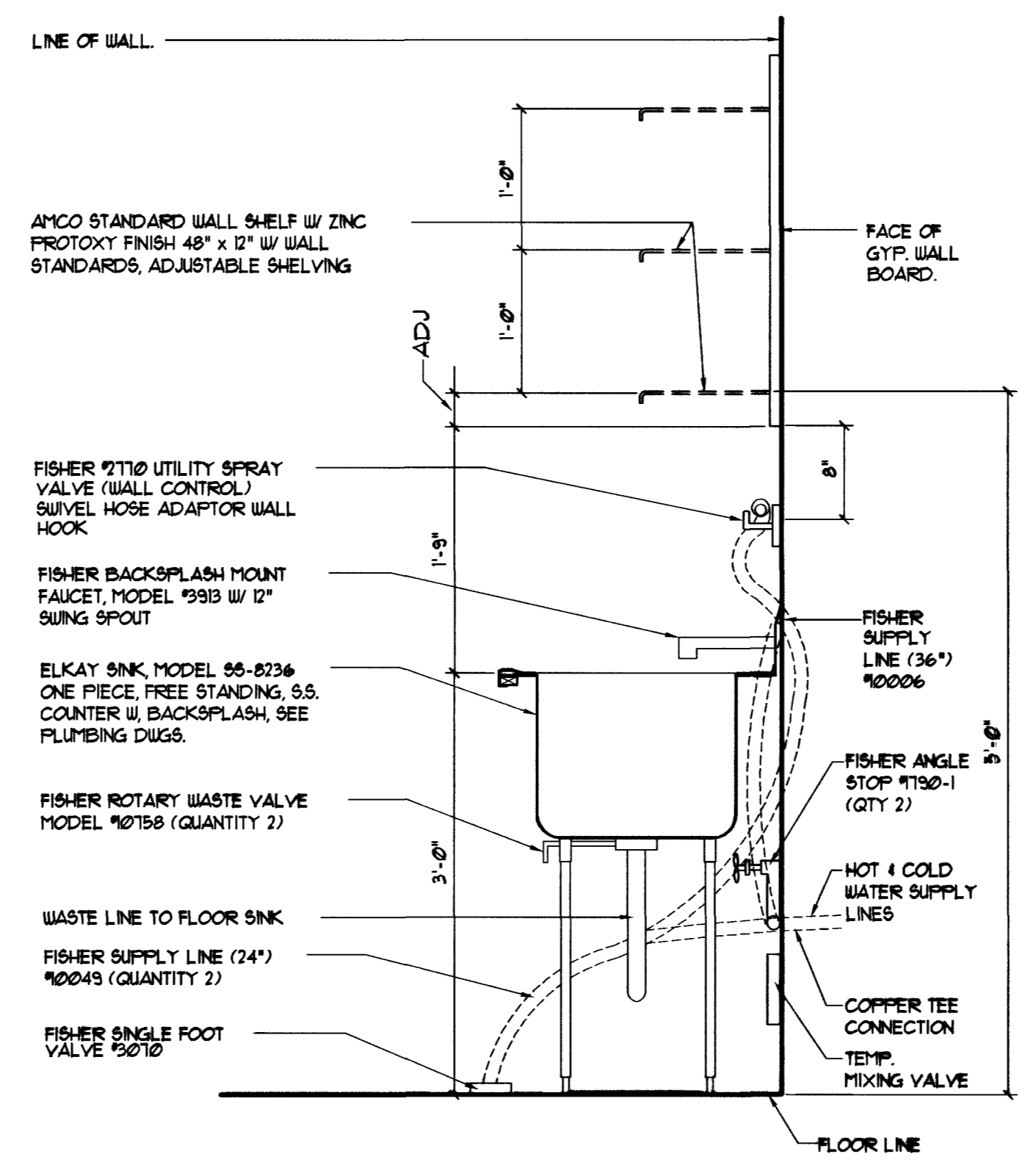


1 Drain Leader Chase
Scale: 1/2" = 1'-0"
A10-1-1

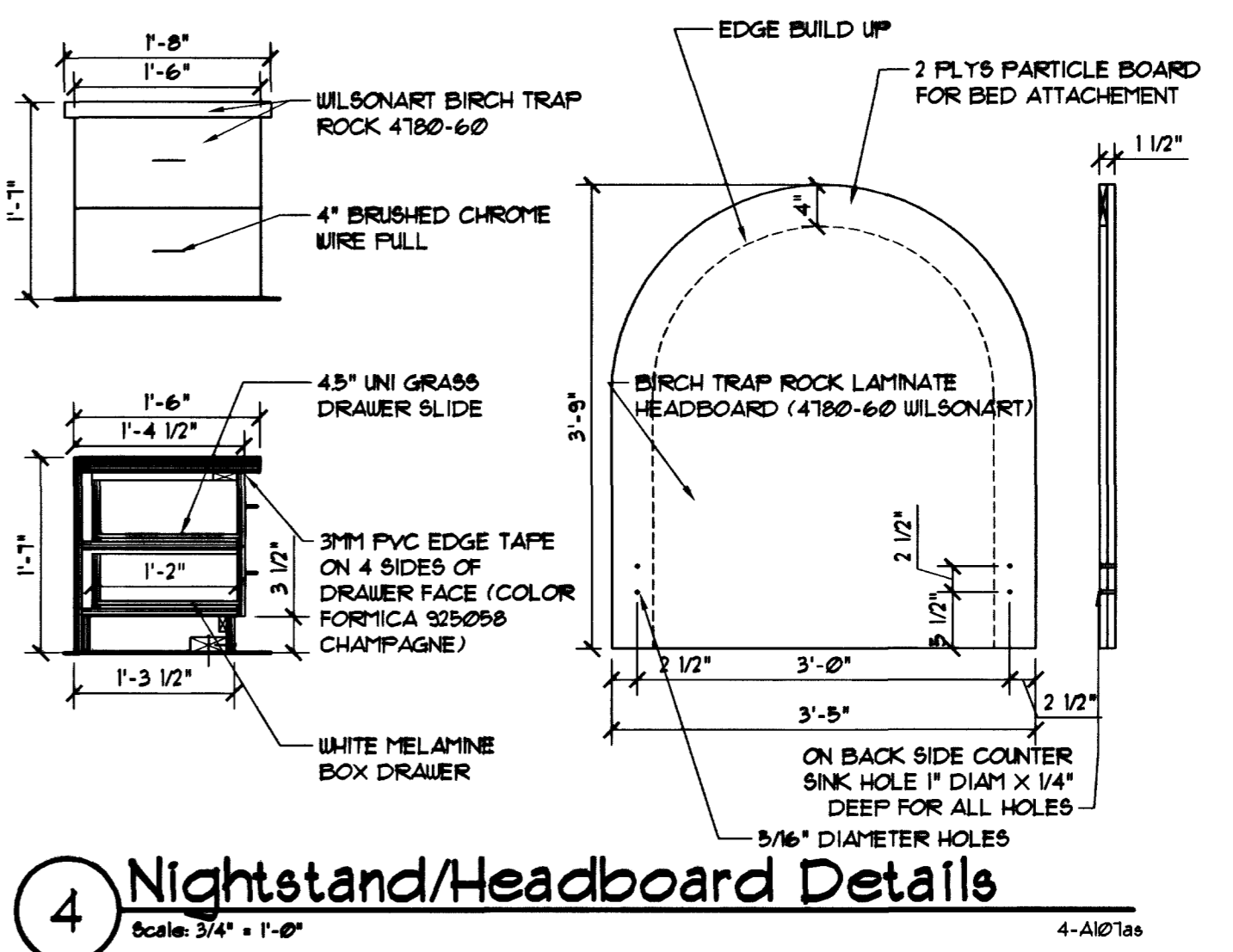


2 Walk Pad Detail
Scale: 1/2" = 1'-0"
A10-1-2

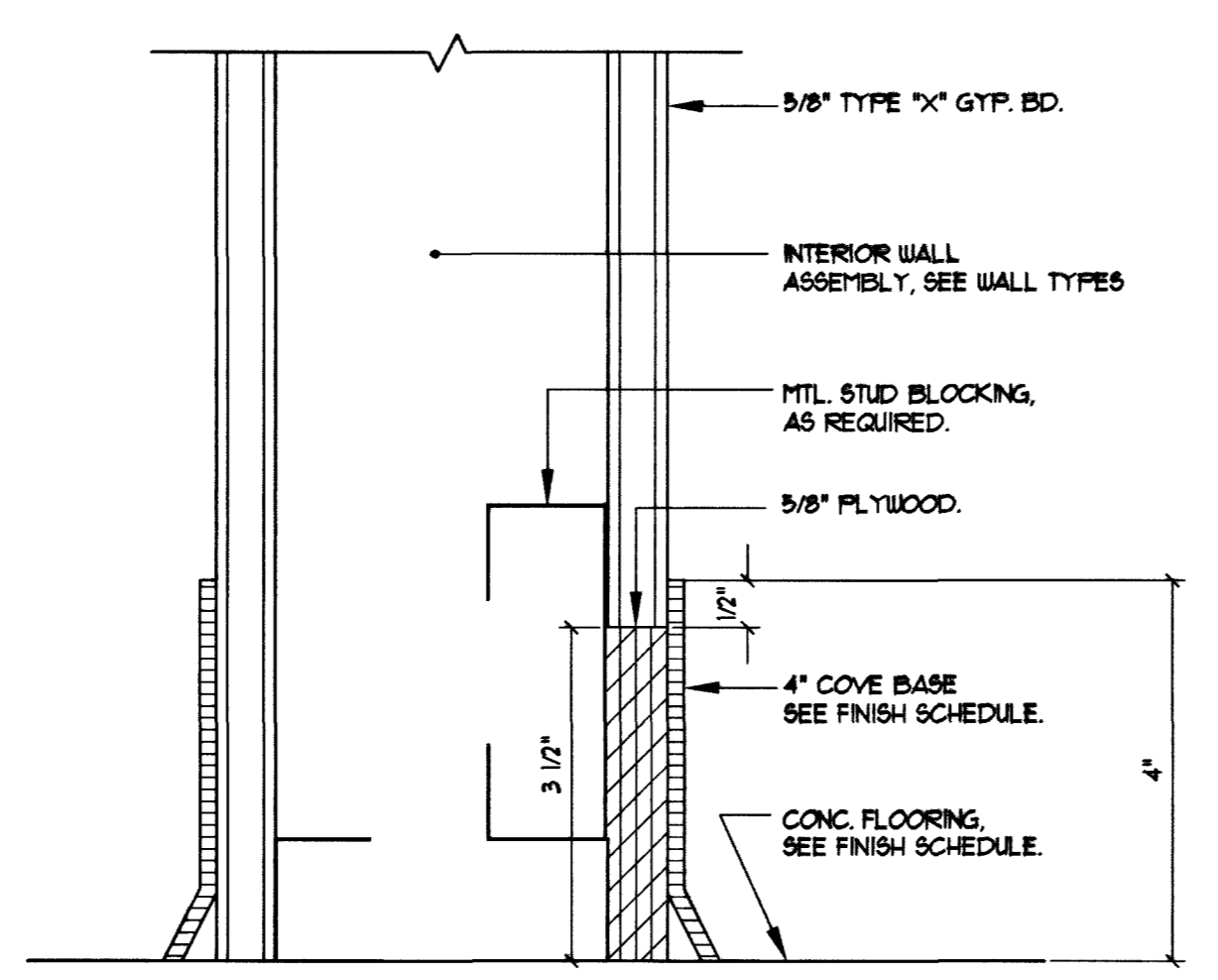
NOTES:
CUT 40\"/>



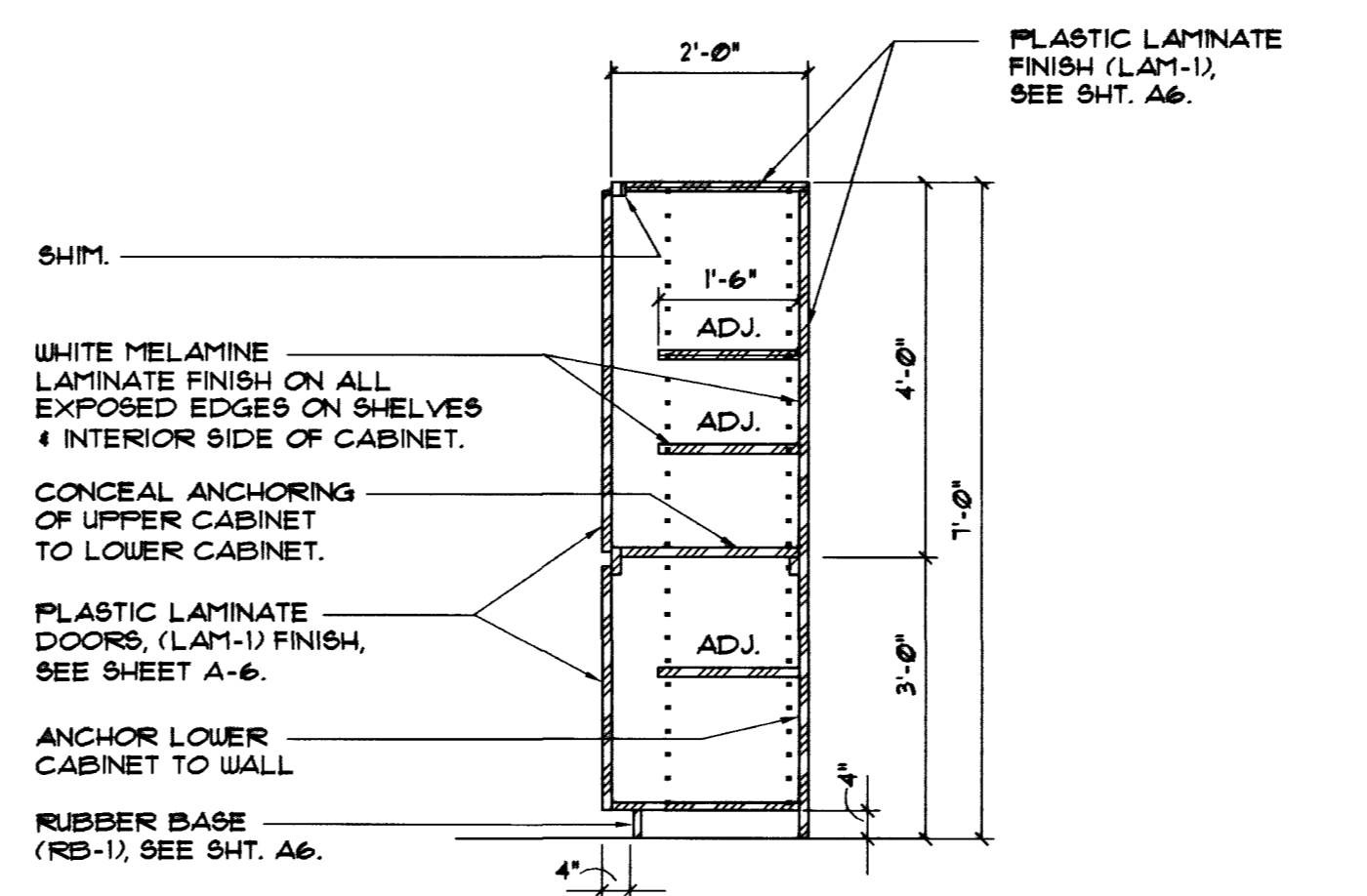
3 Clean Sink and Upper Shelves
Scale: 1" = 1'-0"
12300-04 A10-1-3



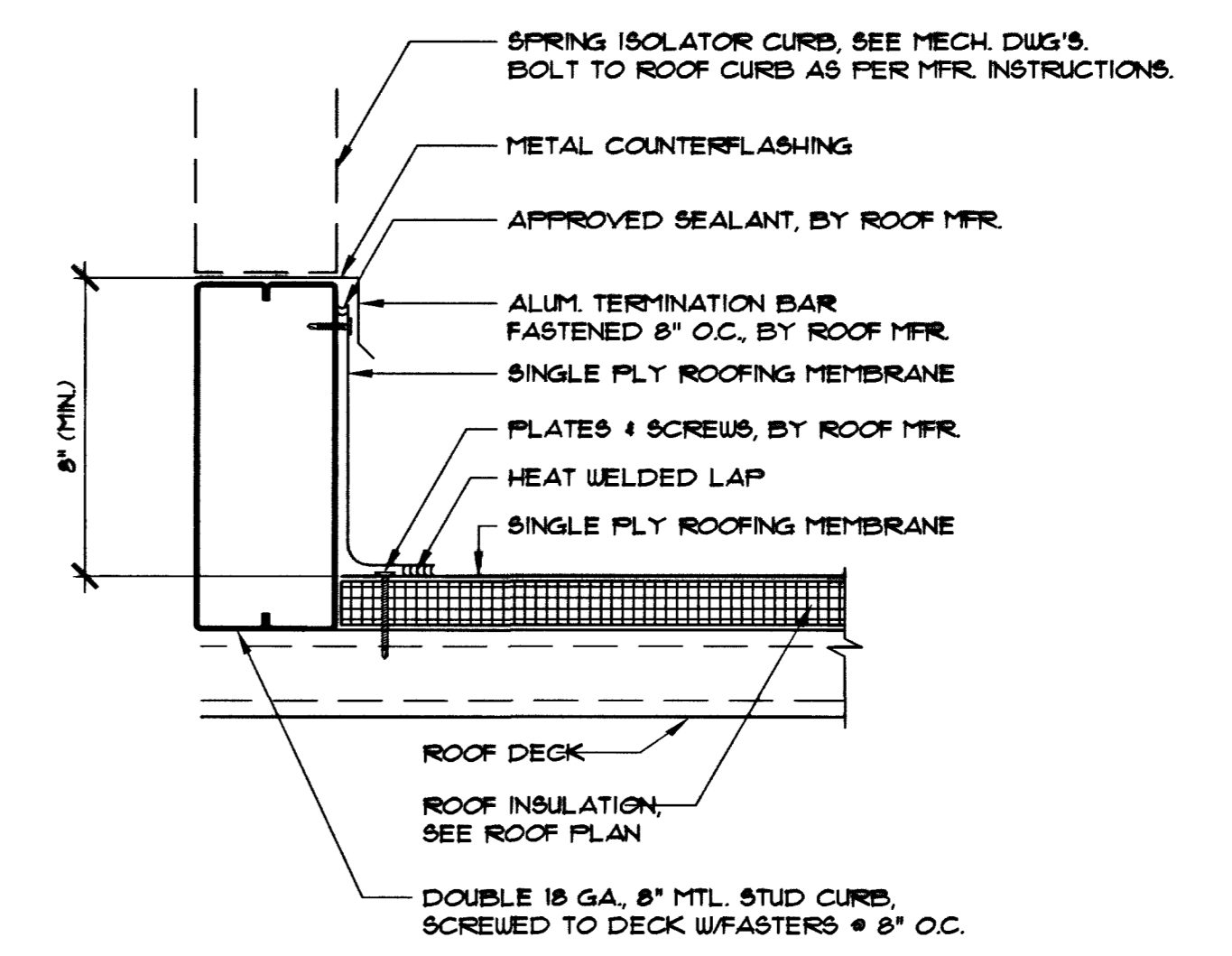
4 Nightstand/Headboard Details
Scale: 3/4" = 1'-0"
4-A1014a



8 Cove Base Detail
Scale: 6" = 1'-0"
A10-1-08



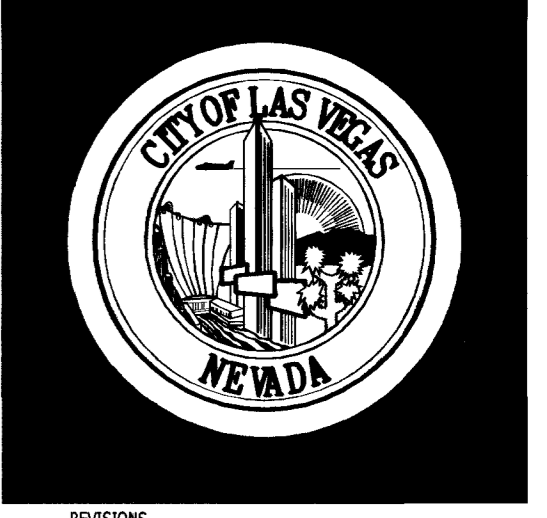
9 Linen Cabinet Section
Scale: 1/2" = 1'-0"
XXXX-XX A10-1-09



10 MECHANICAL ROOF CURB DETAIL
Scale: 3" = 1'-0"
10-A101

NOTES:
ALL FLASHINGS MUST BE A MINIMUM OF 8\"/>

\$7272



RECORD DRAWING

DEPARTMENT OF PUBLIC WORKS

CITY OF LAS VEGAS, NEVADA
FIRE STATION #44

Details

| | |
|-------------------------|----------------------------|
| OWNER: | CITY OF LAS VEGAS |
| DEPARTMENT: | DEPARTMENT OF PUBLIC WORKS |
| ARCHITECTURAL SERVICES: | |
| 400 EAST STEWART AVENUE | |
| LAS VEGAS, NEVADA 89101 | |
| PHONE: | (702) 229-6535 |
| FAX: | (702) 382-5232 |
| TDD: | (702) 386-9108 |
| DRAWN: | EP6 |
| FILE: | 1044-A10-1 |
| DATE: | 10/23/01 |
| SCALE: | As Noted |
| SHEET NO.: | 02.1534.02 |
| CIV. DWG. NO.: | 630.97 |
| | 50 OF 106 |
| | A10.7 |