



REVISIONS

CONSULTANT

CITY OF LAS VEGAS, NEVADA
FIRE STATION #44
Details

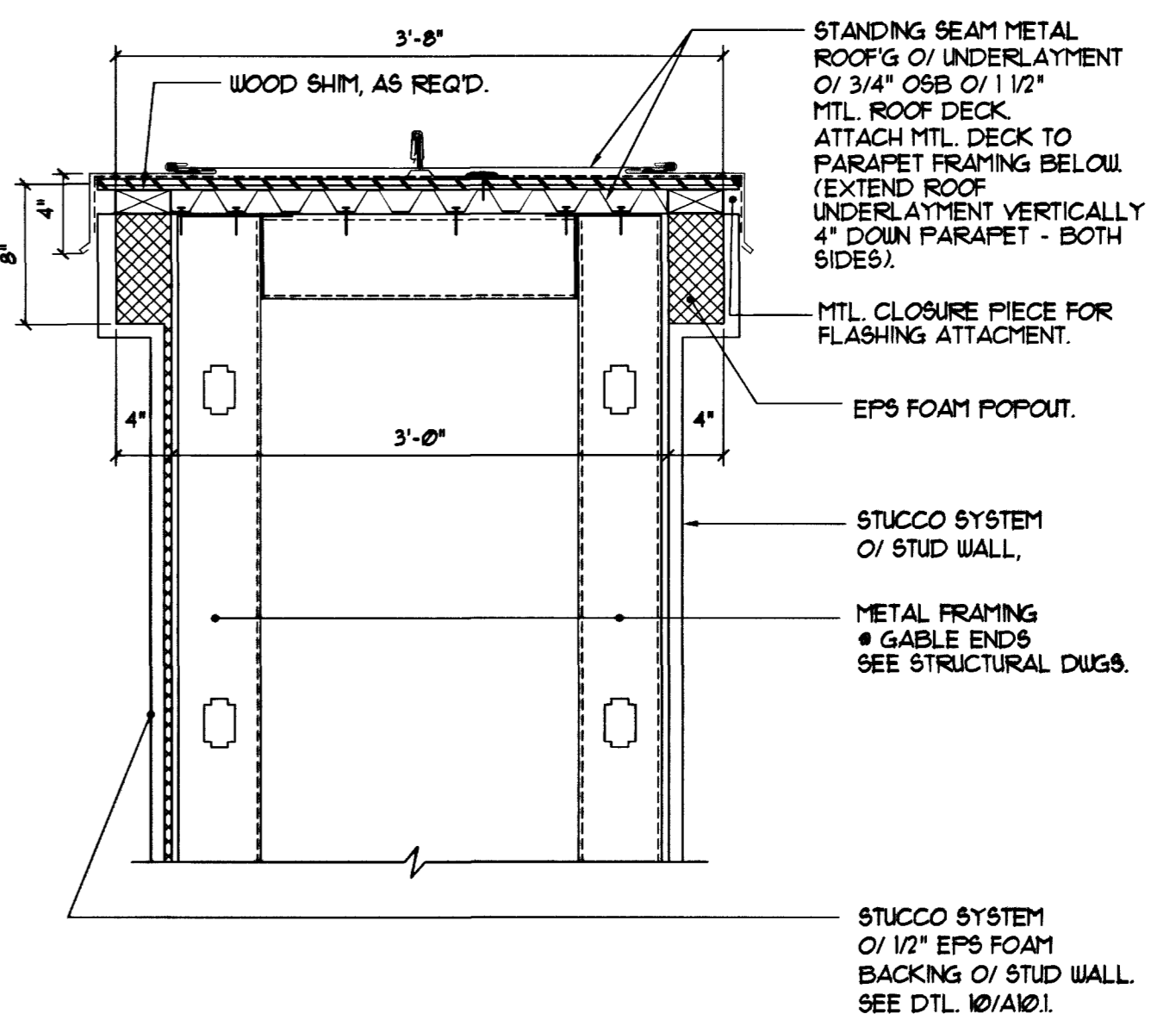
RECORD DRAWING
DEPARTMENT OF PUBLIC WORKS

OWNER: CITY OF LAS VEGAS
DEPARTMENT OF PUBLIC WORKS
ARCHITECTURAL SERVICES

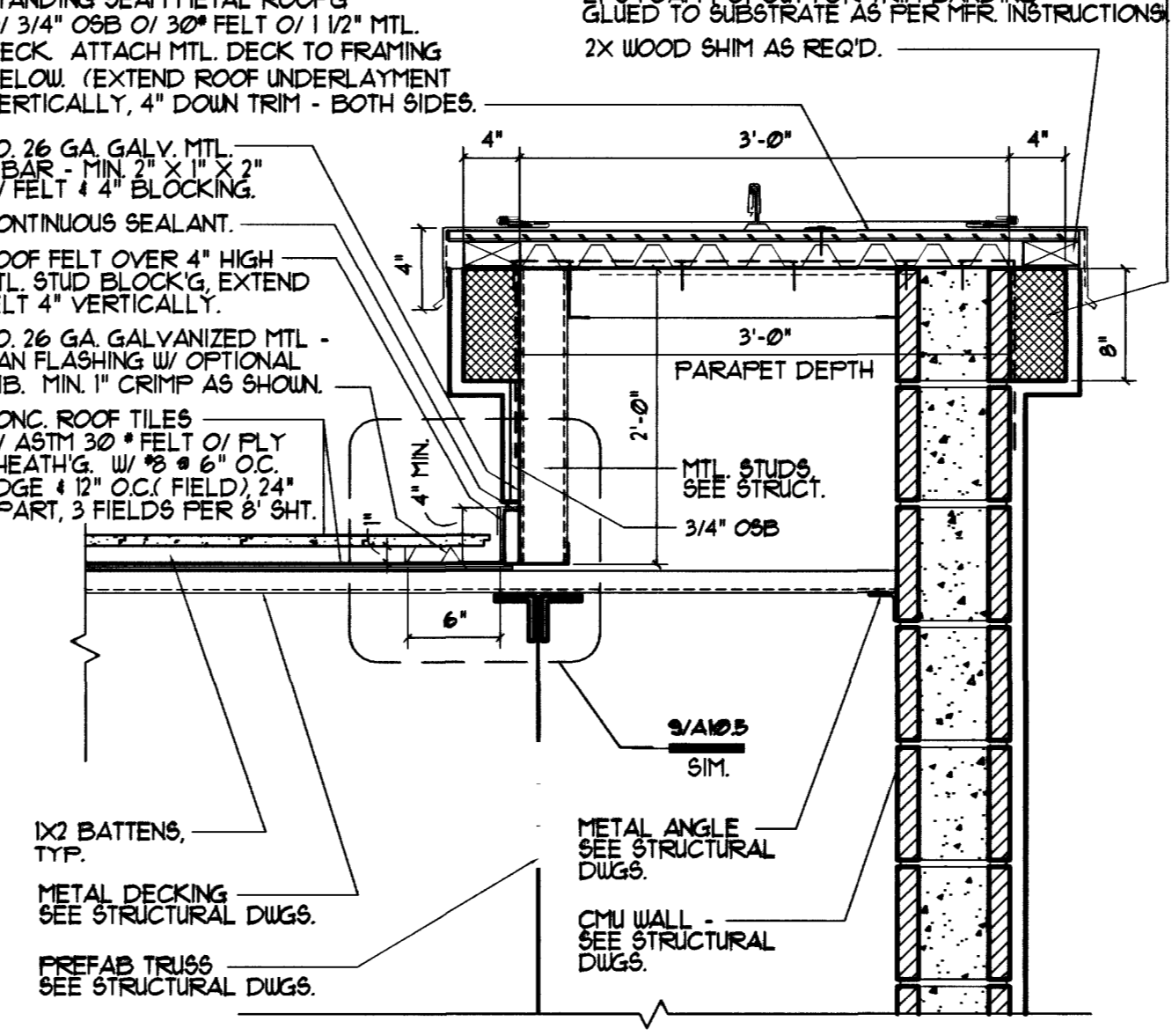
400 EAST STEWART AVENUE
LAS VEGAS, NEVADA 89101
PHONE: (702) 239-6332
FAX: (702) 382-3232
TDD: (702) 386-9108

DRAWN: EPS
FILE: 1644-A10-3
DATE: 10/25/01
SCALE: As Noted
BID NO: 02.1534102
CIV DWG NO: 63097
46 OF 106
SHEET NO:

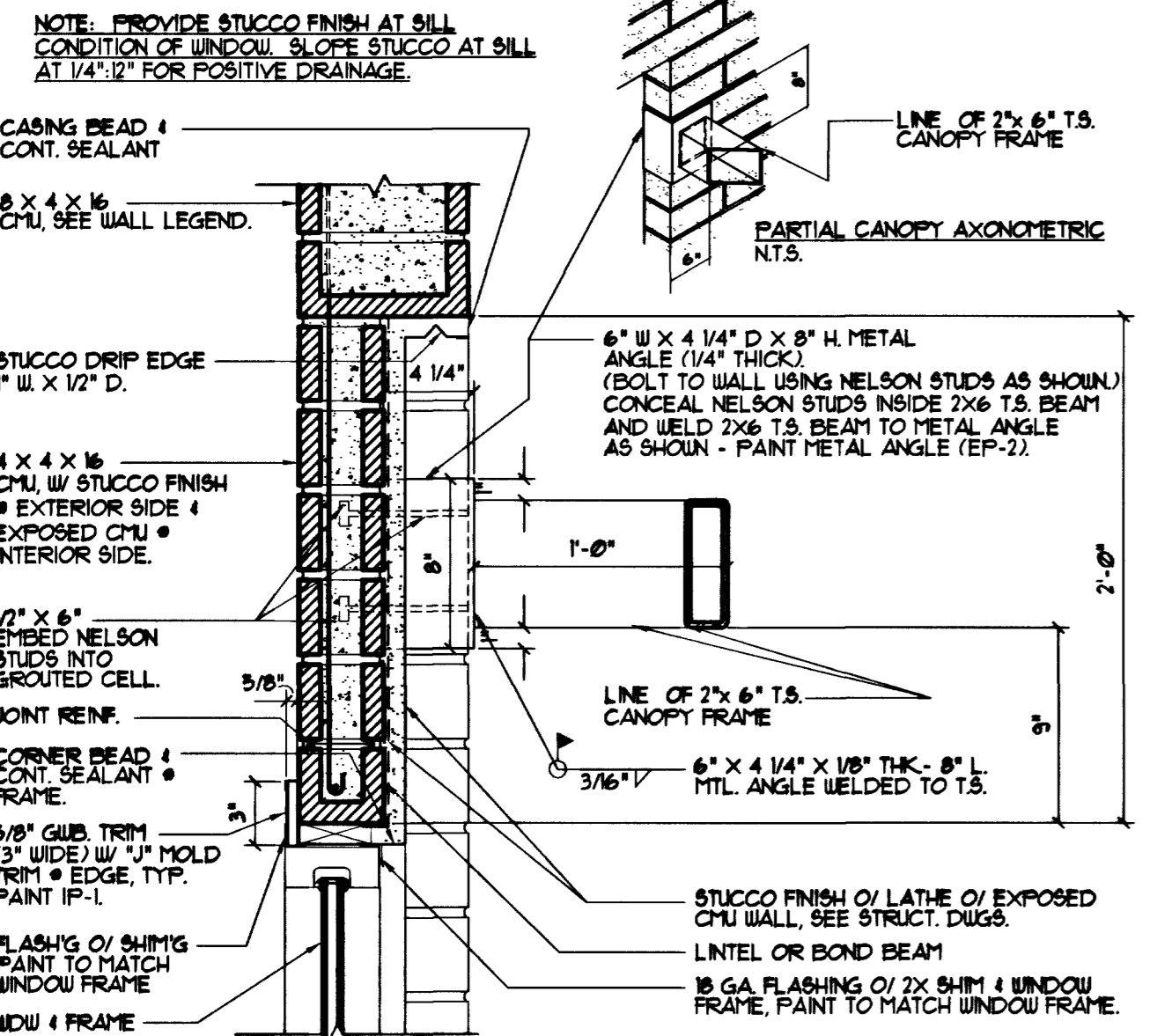
A10.3



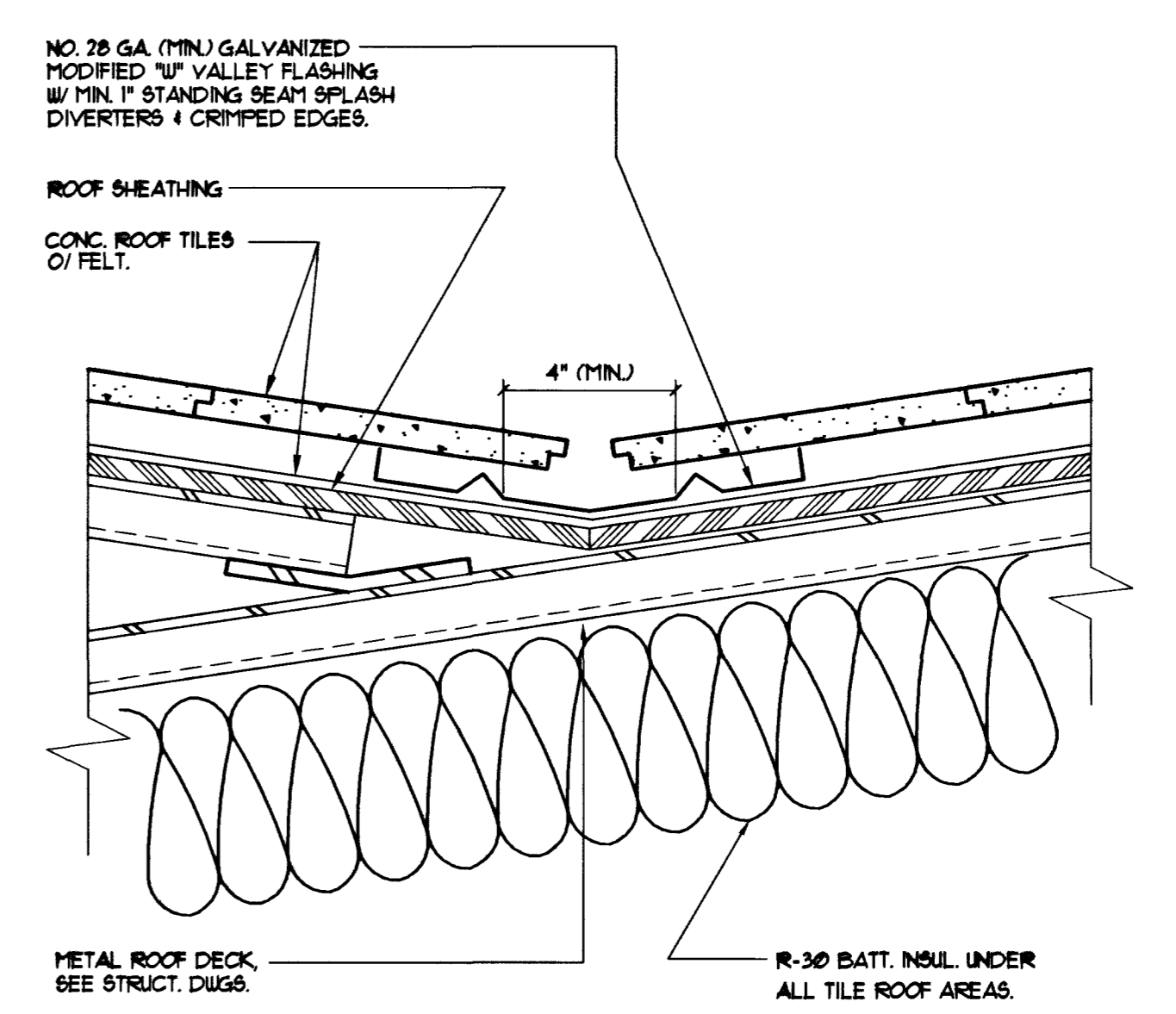
4 Parapet Detail @ Gable Ends
Scale: 1/2"=1'-0" A10-3-4



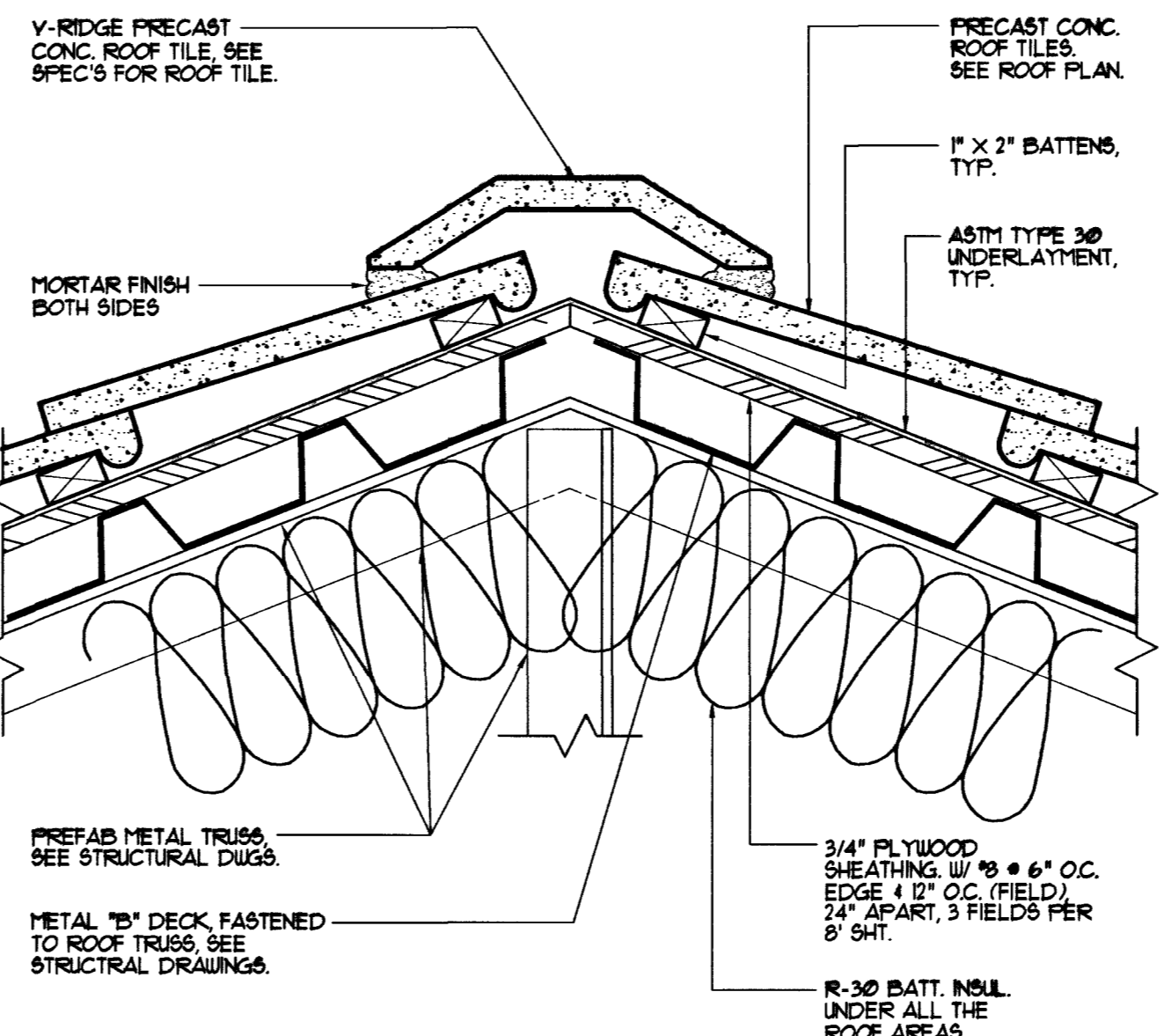
3 Gable End Parapet Detail
Scale: 1/2"=1'-0" A10-3-3



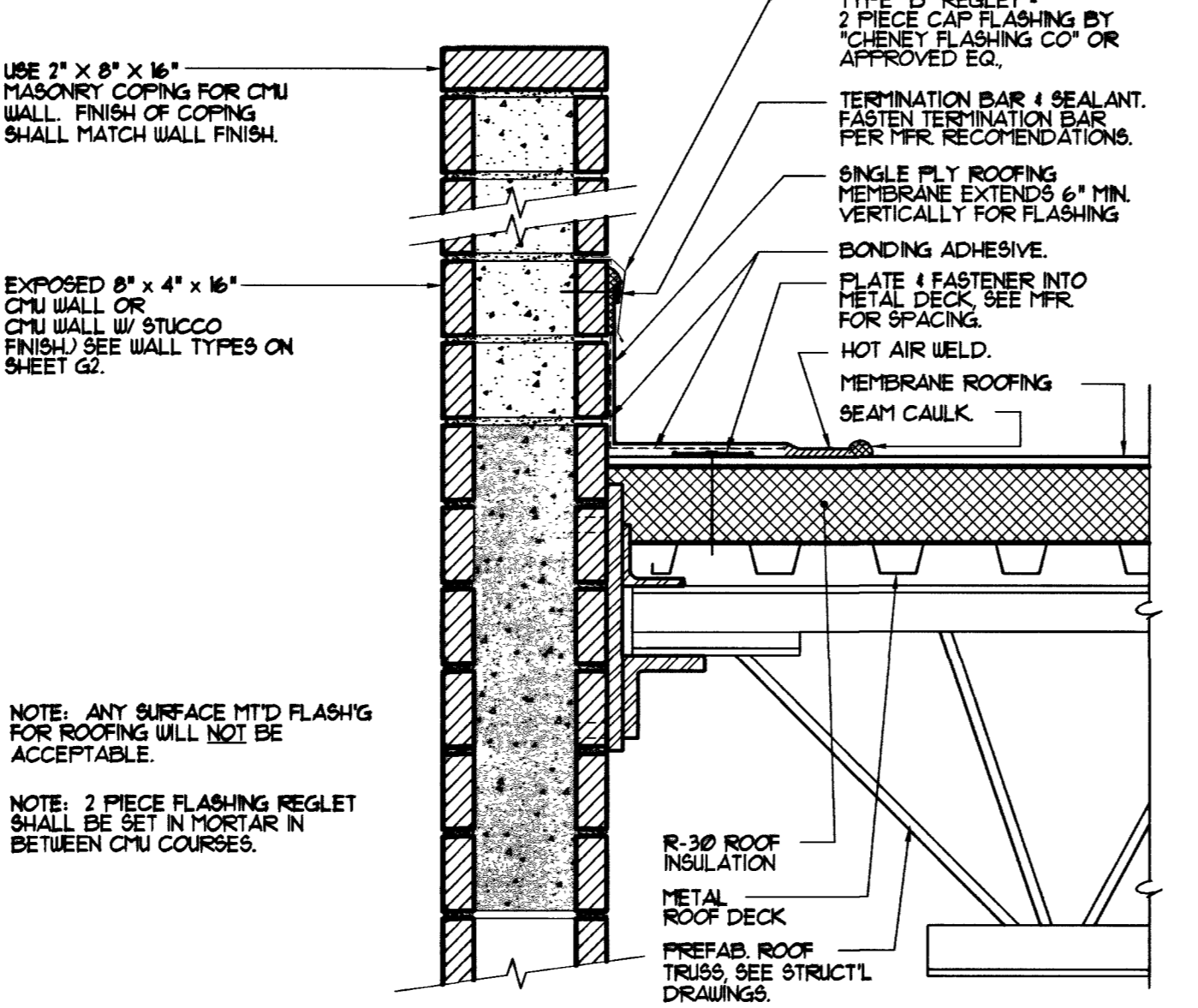
1 Window Canopy "B" Detail
Scale: 1/2"=1'-0" A10-3-1



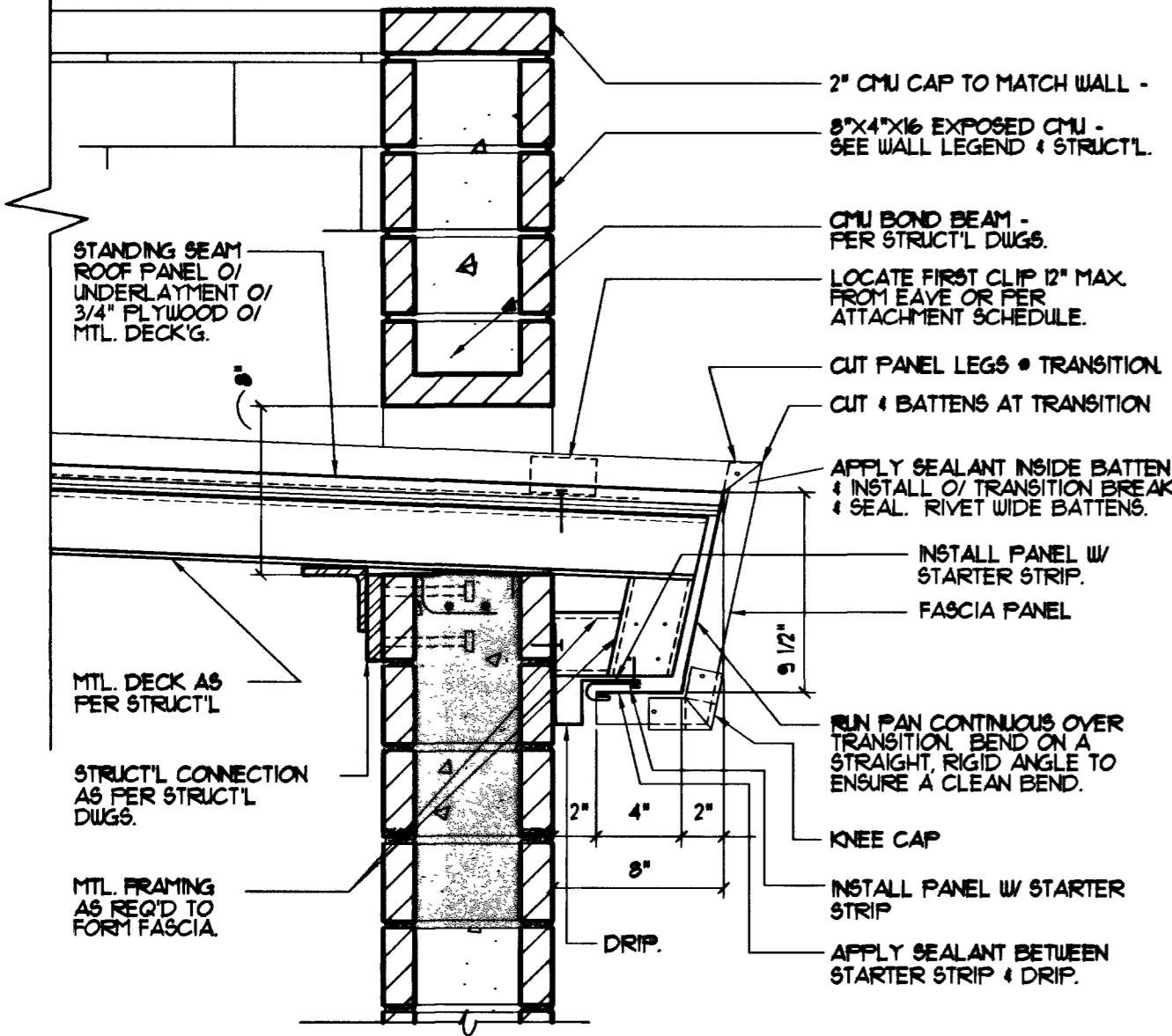
8 Closed Valley Flashing Detail
Scale: 3/4"=1'-0" A10-3-8



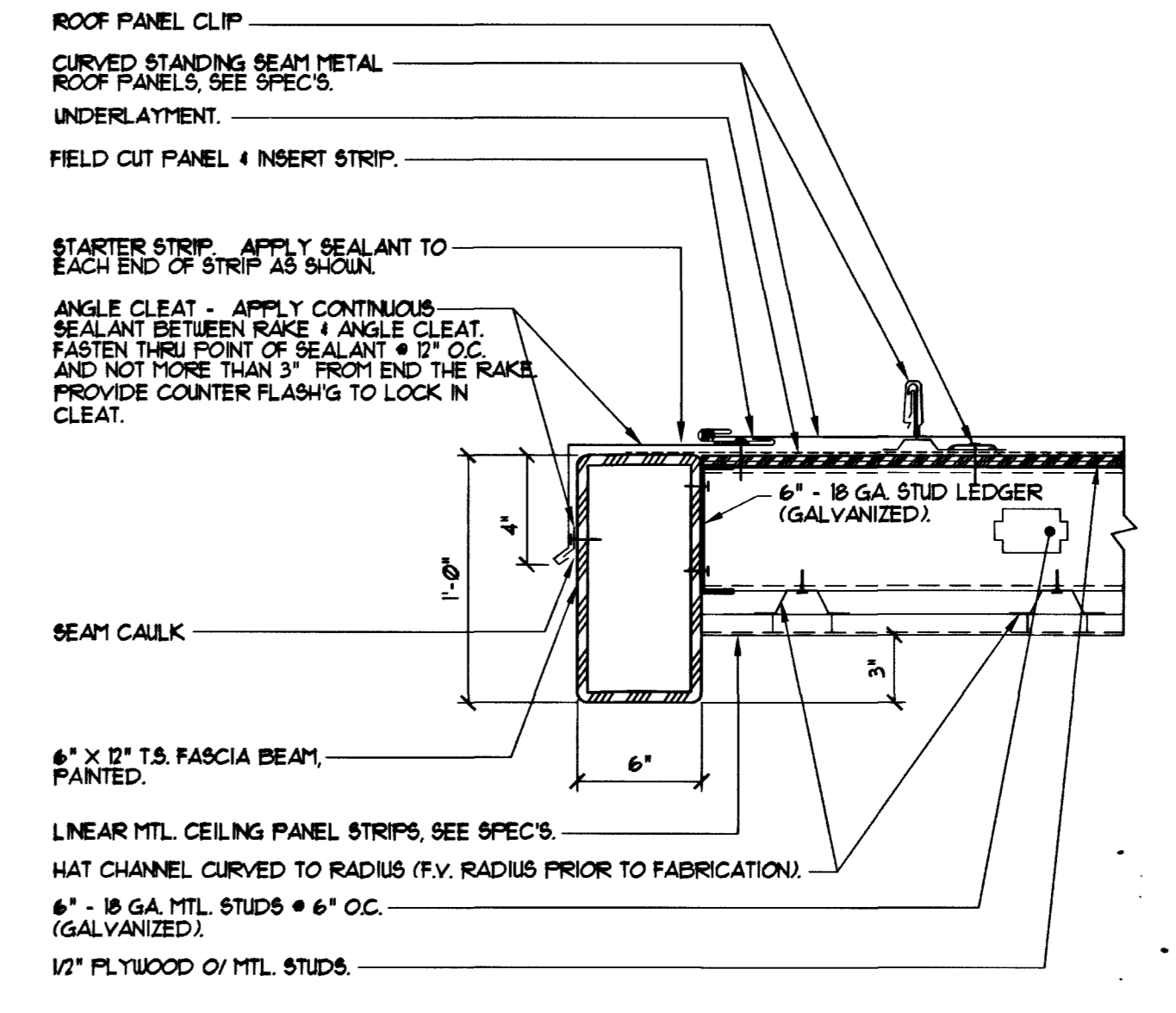
7 Ridge Trim Detail
Scale: 3/4"=1'-0" A10-3-7



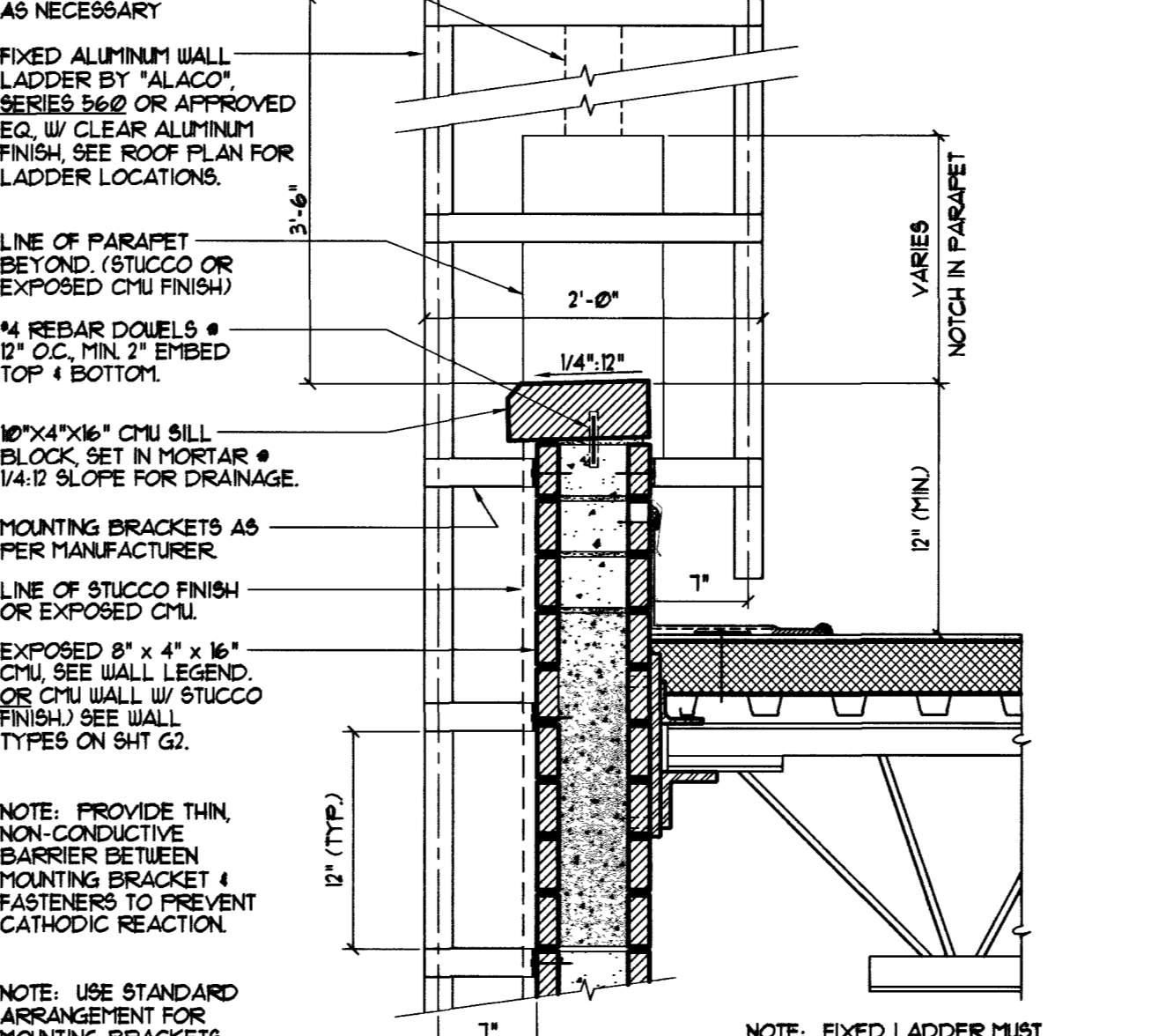
6 Parapet Dtl. @ Brick Wall
Scale: 1/2"=1'-0" A10-3-6



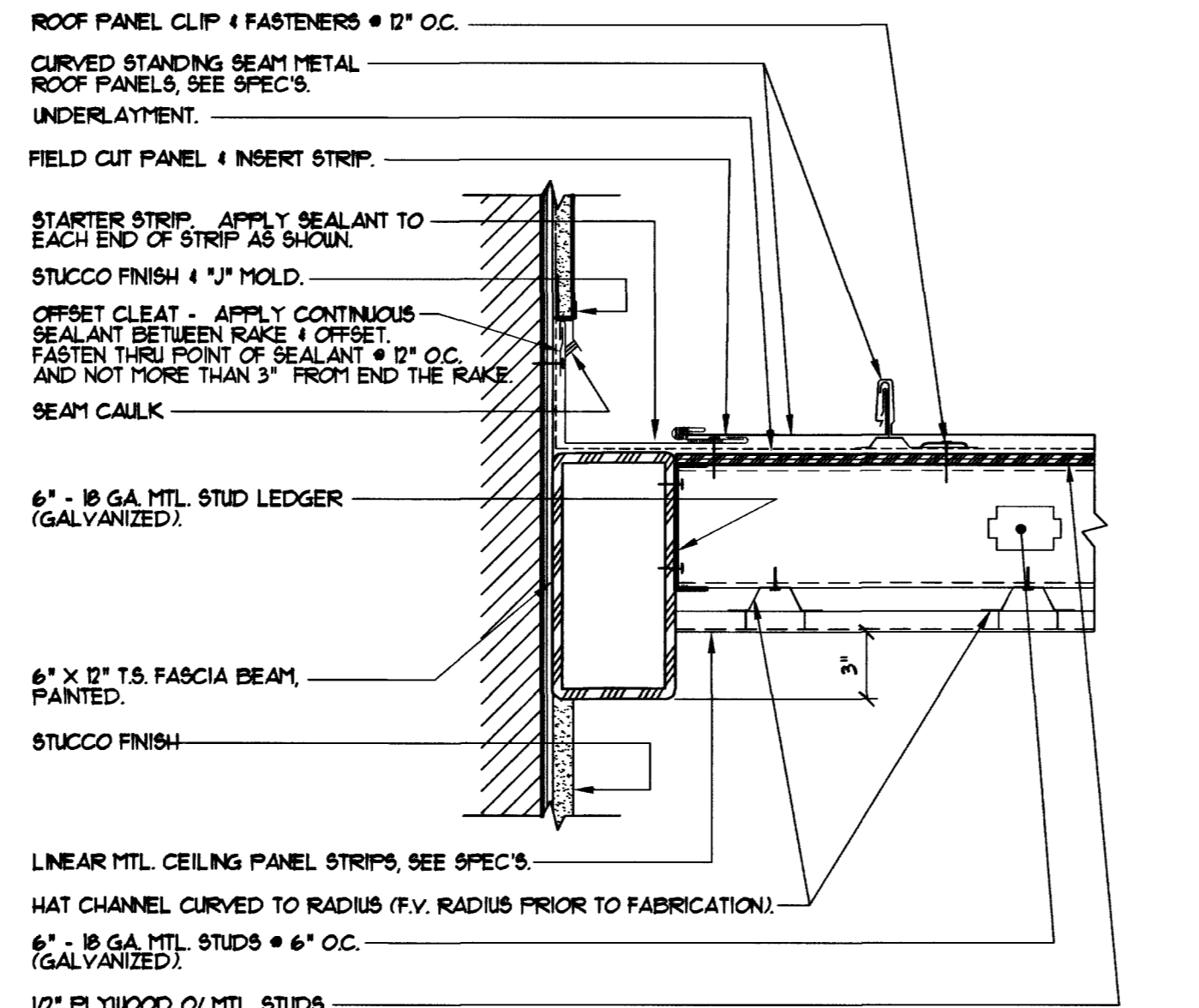
5 Standing Seam Roof Fascia Detail
Scale: 1/2"=1'-0" A10-3-5



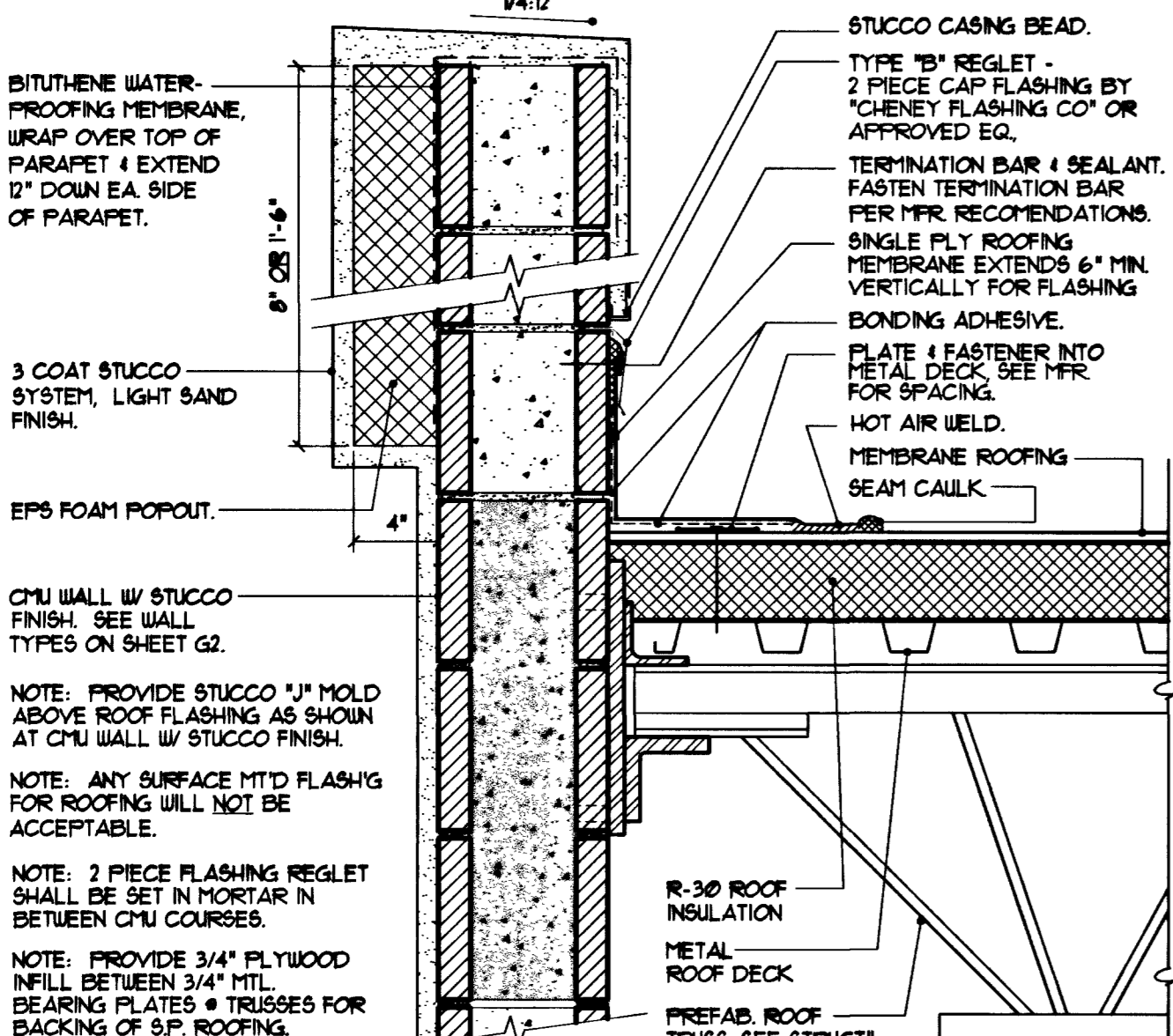
12 Rake Condition @ Canopy Fascia
Scale: 1/2"=1'-0" A10-3-12



11 Roof Ladder Detail
Scale: 1/2"=1'-0" A10-3-11



10 Sidewall Detail @ Canopy
Scale: 1/2"=1'-0" A10-3-10



9 Parapet Trim Dtl.
Scale: 1/2"=1'-0" A10-3-9

57268