



REVISIONS
 1. Par Bldg Dept. - 9/10/01
 2. Par Architect - 10/24/01

CONSULTANT

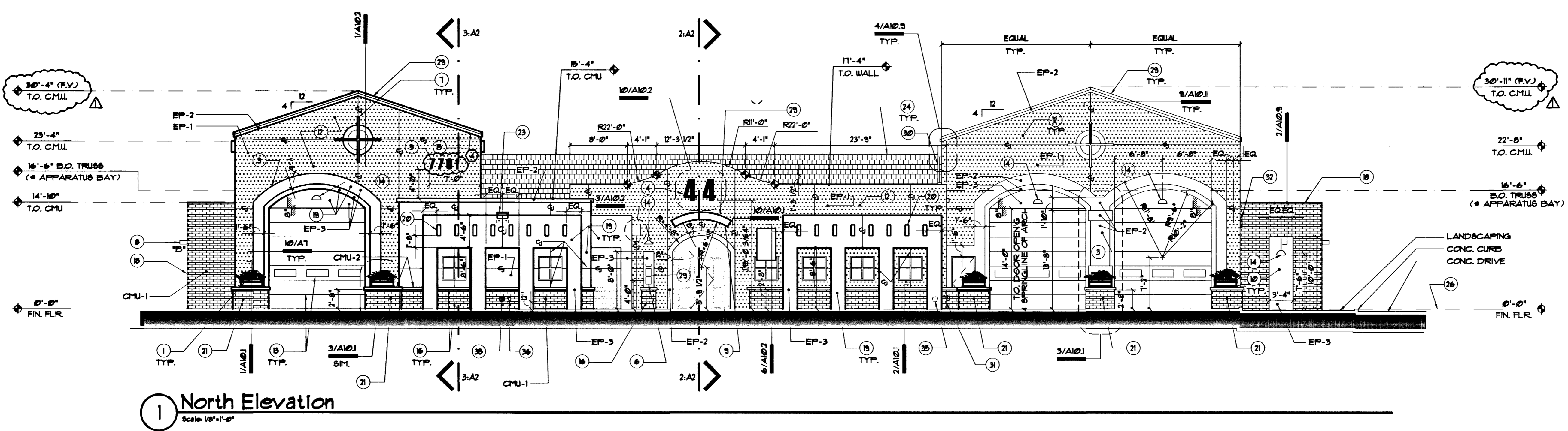
CITY OF LAS VEGAS, NEVADA
 FIRE STATION #44
 Exterior Elevations

RECORD DRAWING
 DEPARTMENT OF PUBLIC WORKS

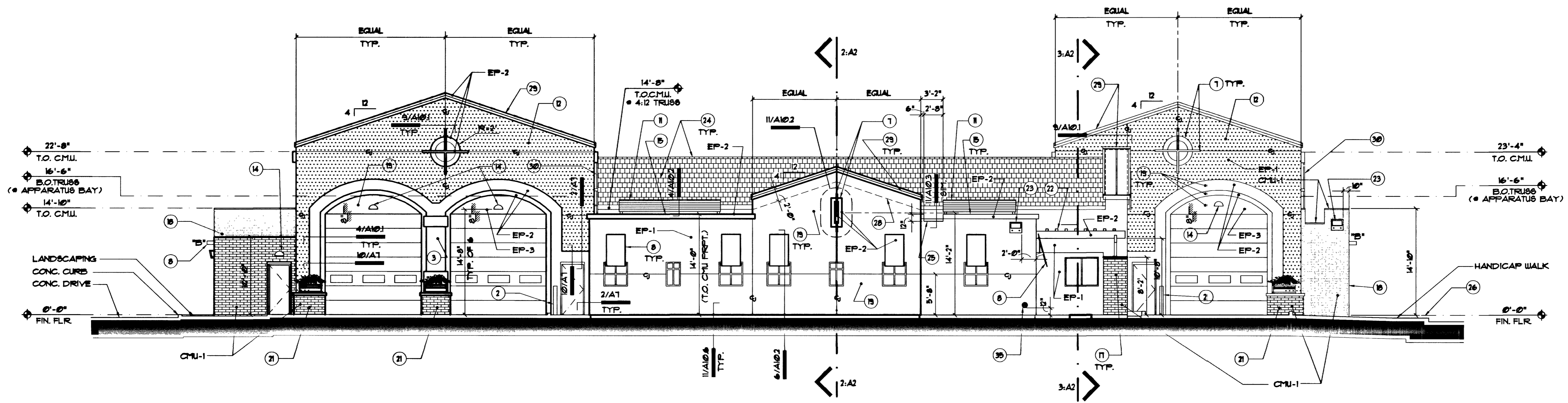
OWNER: CITY OF LAS VEGAS
 DEPARTMENT OF PUBLIC WORKS
 ARCHITECTURAL SERVICES

400 EAST STEWART AVENUE
 LAS VEGAS, NEVADA 89101
 PHONE: (702) 229-6535
 FAX: (702) 382-3232
 TDD: (702) 386-9108

DRWN	EPB
FILE	1444-A42
DATE	10/23/01
SCALE	1/8"=1'-0"
BID NO	02.1534102
CLDWG NO	630.97
36 OF 106	
SHT NO	A4.2



1 North Elevation
 Scale: 1/8"=1'-0"



2 South Elevation
 Scale: 1/8"=1'-0"

Keynotes

- 1 PLANTER BOWL, SEE DETAIL 1/A101.
- 2 PIPE BOLLARD, SEE CIVIL PLANS FOR DETAIL OF BOLLARD.
- 3 STUCCO POPOUT OR PILASTER (AS SHOWN), STUCCO FINISH.
- 4 (3'-0" H.) W/ 3" RETURN - 20 GA. BRUSHED ALUMINUM REVERSE PAN CHANNEL NUMBERS W/ SINGLE TUBE, 5MM RED NEON LIGHTING. SUBMIT SHOP DUGS, PRIOR TO FABRICATION.
- 5 18" H. BRUSHED ALUMINUM ADDRESS LETTERS, (CONCEALED MOUNT) TO WALL. NUMBERS SHALL BE BY "GEMINI" OR APPROVED EQ, HELVETICA FONT, SPACED 2" APART. (CONTRACTOR SHALL VERIFY NUMBERS W/ OWNER PRIOR TO ORDERING).
- 6 EMERGENCY TELEPHONE / MAILBOX ALCOVE, SEE DETAIL 4/A106.
- 7 PAINTED T.S. CROSSBARS & STUCCO ROSETTE, SEE DETAIL 1/A102 & 11/A102.
- 8 WINDOW CANOPY - SEE DETAILS ON SHT'S. A102 & A103 AS INDICATED FOR DIFFERING CANOPY CONDITIONS. SEE LETTER "B" LOCATED NEXT TO WINDOW CANOPIES AS SHOWN ON THIS SHEET, THIS LETTER WILL INDICATE WHICH DETAIL ON SHT. A103 TO USE.
- 9 ARCHED ENTRANCE CANOPY - SEE DETAILS ON SHEETS A3 & A5
- 10 STUCCO NICHE AT CMU WALL, SEE DETAIL 1/A103 (S1M) & 12/A102.
- 11 SCREEN FOR ROOFTOP HVAC UNITS, SEE SHEET A3 & DETAIL 4/A102.
- 12 DOT HATCHED AREAS ARE TO RECEIVE STUCCO O/ EPS FOAM AS PER DTL. 10/A101.
- 13 SECTIONAL GARAGE DOOR W/ WINDOW "LITES" AS SHOWN - PAINT DOOR AS PER EXTERIOR FINISH SCHEDULE AND SEE DOOR SCHEDULE AND SPEC'S.
- 14 EXTERIOR LIGHT, SEE ELECT. DUGS, FOR DIFFERENT LIGHTS & LOCATIONS IN PLAN.

Keynotes

- 15 STUCCO PARAPET TRIM BANDING - PAINT PER FINISH SCHEDULE, SEE DETAILS 4 & 9/A103.
- 16 2'-0" H. (4"x4"x16") EXPOSED CMU WAINSCOT W/ 6"x4"x16" SILLBLOCK, SEE DETAIL 2/A101.
- 17 8'-2" HIGH - 8"x4"x16" EXPOSED CMU WALL AT PATIO W/ 8"x2"x16" CAP BLOCK
- 18 8"x4"x16" EXPOSED CMU W/ 8"x2"x16" CAP BLOCK, SEE FINISH SCHEDULE, SPECIFICATIONS & STRUCTURAL DRAWINGS, SEE DETAIL 11/A103.
- 19 LIGHT SAND STUCCO FINISH - PAINT PER EXTERIOR FINISH LEGEND & SEE SPECIFICATIONS.
- 20 METAL FRAMED TRELLIS MEMBERS W/ STUCCO FINISH, PAINTED, SEE FINISH LEGEND & DTL. 3/A102.
- 21 8"x4"x16" CMU BOLLARD/PLANTER, SEE DTL. 1/A101.
- 22 TUBE STEEL CANOPY, SEE DETAILS INDICATED, PAINT (EP-2).
- 23 OVERFLOW ROOF SCUPPER, SEE DTL. 4/A105 & ROOF PLAN, (ALSO SEE GEN. NOTES THIS SHT.)
- 24 CONCRETE ROOF TILES, SEE FINISH SCHEDULE AND SPECIFICATIONS & ROOF PLAN.
- 25 10" X 2" X 16" EXPOSED CMU SILL BLOCK, SEE DTL. 11/A103.
- 26 LINE OF FINISH GRADE, TYPICAL.
- 27 LINE OF GABLE PARAPET WALL UNDER TRIM, SEE DETAIL 4/A103.
- 28 LINE OF TOP OF ROOF BEHIND ROOF PARAPET, SEE DETAIL 3/A103 FOR ROOF FLASHING DTL. AT PARAPET WALL.
- 29 STANDING SEAM METAL ROOF, O/ METAL DECKING, (SEE DTL'S 3 & 4/A103 FOR SPECIAL SHOWING STANDING SEAM ROOF ON GABLE PARAPETS.) SEE SHEET A3 FOR LOCATIONS OF ALL AREAS TO RECEIVE STANDING SEAM ROOFING.

Keynotes

- 30 FIXED ALUMINUM EXTERIOR WALL LADDER, BY "ALACO", SERIES 560, USE STANDARD ARRANGEMENT FOR MOUNTING BRACKETS AS PER MFR. SEE DTL. 11/A103, PROVIDE CLEAR ANODIZED ALUMINUM FINISH.
- 31 EXPOSED CMU MASONRY VENEER JOINT, SEE DETAIL 9/A103.
- 32 HORN & STROBE, SEE SHEET FP-01.
- 33 NOT USED.
- 34 NOT USED.
- 35 ROOF DRAIN OUTLET & DOWNSPOUT NOZZLE, SEE PLUMBING DUGS.
- 36 HOSE BIBB, SEE PLUMBING DUGS.

General Notes:

1. ALL EXTERIOR METAL TO BE GALVANIZED AND PAINTED PER FINISH SCHEDULE.
2. SEE FINISH LEGEND FOR COLORS OF ALL FINISHES KEYNOTED ON ELEVATIONS.
3. SEE SHEET A41 FOR EXTERIOR FINISH SCHEDULE.
4. ANY PLACE WHERE A "CJ" IS SHOWN INDICATES A CONTROL JOINT RUNNING ALONG THE FACE OF THE WALL.
5. COORDINATE MOUNTING HT'S OF BOTTOM OF OVERFLOW SCUPPERS W/ ROOFING CONTRACTOR AND DETAIL 4/A103.

DRAWINGS AND INSTRUMENTS OF SERVICE ARE THE PROPERTY OF THE DESIGN PROFESSIONAL, WHOSE SEAL OF CERTIFICATION APPEARS ON THE DRAWINGS AND SPECIFICATIONS. ANY USE OR REPRODUCTION IN WHOLE OR IN PART WITHOUT WRITTEN CONSENT IS STRICTLY PROHIBITED. COPYRIGHT © THE OWNERS AND SPECIFICATIONS REMAINED BY THE CLIENT. ALL RIGHTS RESERVED. N.E.C. 623.190