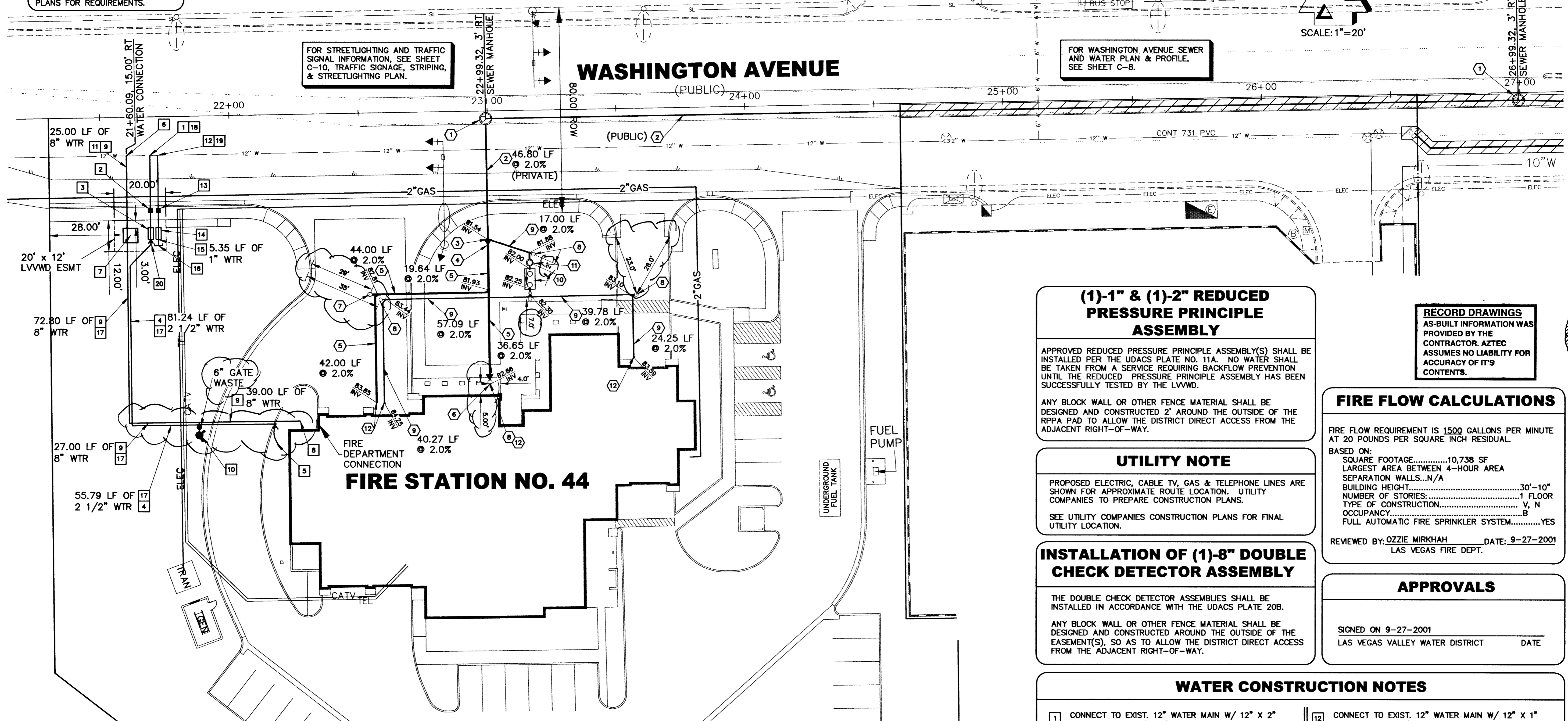
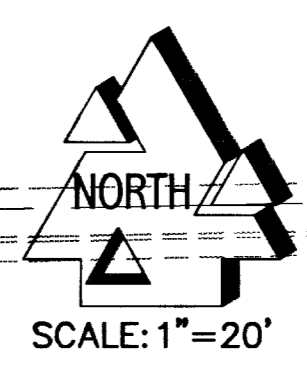
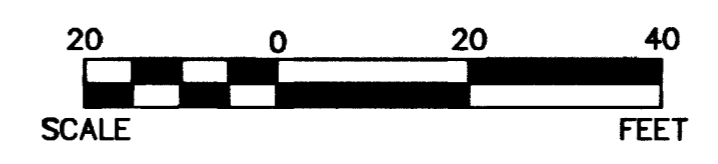


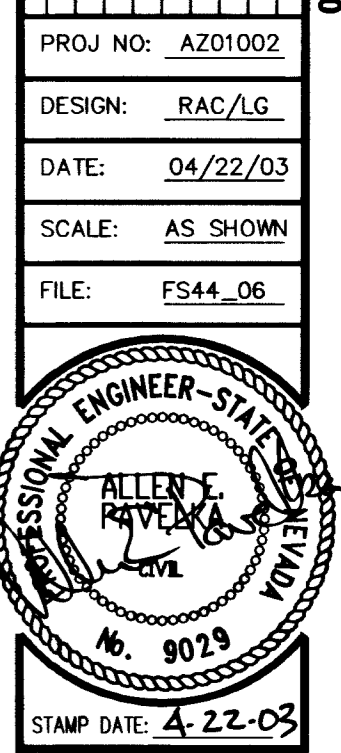
NOTE
CONDUITS FOR CABLE, TELEPHONE, & POWER SHALL BE INSTALLED AND BACKFILLED BY CONTRACTOR. REFER TO UTILITY COMPANY PLANS FOR REQUIREMENTS.

FOR STREETLIGHTING AND TRAFFIC SIGNAL INFORMATION, SEE SHEET C-10, TRAFFIC SIGNAGE, STRIPING, & STREETLIGHTING PLAN.

FOR WASHINGTON AVENUE SEWER AND WATER PLAN & PROFILE, SEE SHEET C-8.



PROJ NO:	AZ01002
DESIGN:	RAC/LG
DATE:	04/22/03
SCALE:	AS SHOWN
FILE:	FS44_06



AZTEC ENGINEERING
3320 N Buffalo Dr. # 106, Las Vegas, NV 89129
Tel (702) 396-3426 Fax (702) 396-3758
Email: aztec@aztecing.com

CITY OF LAS VEGAS
FIRE STATION NO. 44
MASTER UTILITY PLAN

SHEET
C-6
6 OF 20 SHEETS
CLV DRAWING NO.
630.97

(1)-1" & (1)-2" REDUCED PRESSURE PRINCIPLE ASSEMBLY

APPROVED REDUCED PRESSURE PRINCIPLE ASSEMBLY(S) SHALL BE INSTALLED PER THE UDACS PLATE NO. 11A. NO WATER SHALL BE TAKEN FROM A SERVICE REQUIRING BACKFLOW PREVENTION UNTIL THE REDUCED PRESSURE PRINCIPLE ASSEMBLY HAS BEEN SUCCESSFULLY TESTED BY THE LVVWD.

ANY BLOCK WALL OR OTHER FENCE MATERIAL SHALL BE DESIGNED AND CONSTRUCTED 2' AROUND THE OUTSIDE OF THE RPPA PAD TO ALLOW THE DISTRICT DIRECT ACCESS FROM THE ADJACENT RIGHT-OF-WAY.

UTILITY NOTE

PROPOSED ELECTRIC, CABLE TV, GAS & TELEPHONE LINES ARE SHOWN FOR APPROXIMATE ROUTE LOCATION. UTILITY COMPANIES TO PREPARE CONSTRUCTION PLANS.

SEE UTILITY COMPANIES CONSTRUCTION PLANS FOR FINAL UTILITY LOCATION.

INSTALLATION OF (1)-8" DOUBLE CHECK DETECTOR ASSEMBLY

THE DOUBLE CHECK DETECTOR ASSEMBLIES SHALL BE INSTALLED IN ACCORDANCE WITH THE UDACS PLATE 20B.

ANY BLOCK WALL OR OTHER FENCE MATERIAL SHALL BE DESIGNED AND CONSTRUCTED AROUND THE OUTSIDE OF THE EASEMENT(S), SO AS TO ALLOW THE DISTRICT DIRECT ACCESS FROM THE ADJACENT RIGHT-OF-WAY.

RECORD DRAWINGS
AS-BUILT INFORMATION WAS PROVIDED BY THE CONTRACTOR. AZTEC ASSUMES NO LIABILITY FOR ACCURACY OF IT'S CONTENTS.

FIRE FLOW CALCULATIONS

FIRE FLOW REQUIREMENT IS 1500 GALLONS PER MINUTE AT 20 POUNDS PER SQUARE INCH RESIDUAL.

BASED ON:
 SQUARE FOOTAGE.....10,738 SF
 LARGEST AREA BETWEEN 4-HOUR AREA SEPARATION WALLS...N/A
 BUILDING HEIGHT.....30'-10"
 NUMBER OF STORIES.....1 FLOOR
 TYPE OF CONSTRUCTION.....V, N
 OCCUPANCY.....B
 FULL AUTOMATIC FIRE SPRINKLER SYSTEM.....YES

REVIEWED BY: OZZIE MIRKHAH DATE: 9-27-2001
LAS VEGAS FIRE DEPT.

APPROVALS

SIGNED ON 9-27-2001
LAS VEGAS VALLEY WATER DISTRICT DATE

WATER CONSTRUCTION NOTES

- CONNECT TO EXIST. 12" WATER MAIN W/ 12" X 2" SERVICE SADDLE. (1 EA)
- INSTALL 2" WATER METER PER UDACS PLATE NO. 1D. (1 EA)
- INSTALL 2" RPPA PER UDACS PLATE NO. 11A. (1 EA)
- INSTALL 2 1/2" PVC WATER LINE. (140 LF)
- STUBOUT 2 1/2" LINE FOR DOMESTIC SERVICE 5' FROM BUILDING (SEE MECHANICAL DRAWINGS FOR DETAILS BY OTHERS).
- CONNECT TO EXIST. 12" WATER MAIN WITH 12" X 8" MECH. JOINT TAPPING SLEEVE & VALVE. (1 EA)
- INSTALL 8" FEBCO 876V DCDA (STANDARD ORIENTATION) PER UDACS PLATE NO. 20B. (1 EA)
- STUBOUT 8" LINE FOR FIRE SPRINKLER SYSTEM 5' FROM BUILDING AND PROVIDE CONNECTION FOR DUCTILE IRON PIPE (SEE MECHANICAL DRAWINGS BY OTHERS).
- INSTALL 8" PVC PIPE. (161 LF)
- INSTALL FIRE HYDRANT ASSEMBLY PER UDACS PLATE NO. 7.
- TRENCH SECTION PER UDACA PLATE NO. 6C (PAVED AREA)
- CONNECT TO EXIST. 12" WATER MAIN W/ 12" X 1" SERVICE SADDLE. (1 EA)
- INSTALL 1" WATER METER PER UDACS PLATE NO. 1D. (1 EA)
- INSTALL 1" RPPA PER UDACS PLATE NO. 11A. (1 EA)
- INSTALL 1" PVC WATER LINE. (5.35 LF)
- INSTALL 1" CAP. (1 EA)
- TRENCH SECTION PER UDACS PLATE NO. 6A (UNPAVED AREA).
- INSTALL 2" COPPER WATER LINE. (33 LF)
- INSTALL 1" COPPER WATER LINE. (33 LF)
- INSTALL 2"X2 1/2" ECCENTRIC REDUCER. (1 EA)

GENERAL NOTES

- MAINTAIN MIN. 18" VERTICAL SEPARATION OVER SEWER CROSSINGS.
- INSTALL THRUST BLOCKS FOR ALL CAPS, VALVES, REDUCERS, TEES, AND FITTINGS USED TO CHANGE PIPE DIRECTION PER UDACS PLATE NO. 5 (NO SEPARATE PAYMENT)
- TRENCH BACKFILL PER STD. PLATE 6A & 6B. UDACS AC AND TYPE II WITHIN UPPER 24" MUST MATCH EXISTING SECTION.
- NO SEPARATE PAYMENT FOR TEES, BENDS, REDUCERS, OR THRUST BLOCKS.

SEWER FLOWS

AVERAGE DAILY FLOW	0.008775 MGD (8775 GPD)
PEAK FLOWS	0.036136 MGD (36136 GPD)

UTILITY NOTES & RESPONSIBILITIES

AZTEC ASSUMES NO RESPONSIBILITY FOR THE ACCURACY OF LOCATIONS AND ELEVATIONS OF UTILITIES INDICATED ON THIS MAP, INCLUDING UNDERGROUND LINES, ABOVE GROUND STRUCTURES, AND EXISTING UTILITIES NOT INDICATED OR NOT OF RECORD. LOCATIONS OF UTILITIES HAS BEEN DETERMINED BY SURFACE INDICATIONS AND THE BEST INFORMATION AVAILABLE FROM UTILITY COMPANIES.

THE CONTRACTOR IS RESPONSIBLE FOR FIELD VERIFICATION OF ALL UTILITY LOCATIONS AND ELEVATIONS PRIOR TO BEGINNING EXCAVATION OR CONSTRUCTION OF ANY KIND. IF DISCREPANCIES IN UTILITY LOCATIONS ARE DISCOVERED DURING FIELD VERIFICATION, THE CONTRACTOR MUST IMMEDIATELY NOTIFY AZTEC.

THE CONTRACTOR IS RESPONSIBLE FOR TAKING ALL APPROPRIATE PRECAUTIONARY MEASURES TO PROTECT EXISTING UTILITY LINES AND STRUCTURES BEFORE BEGINNING EXCAVATION. 57231

SEWER CONSTRUCTION NOTES

- INSTALL STANDARD ECCENTRIC MANHOLE PER DWG. NO. SD-1 OF THE DESIGN AND CONSTRUCTION STANDARDS FOR WASTEWATER COLLECTION SYSTEMS.
- INSTALL 8" SDR 35 PVC SEWER LINE
- INSTALL 8"X4" 45° WYE TO 8" SEWER LINE.
- INSTALL 8"X6" ECCENTRIC REDUCER.
- INSTALL 6" SDR 35 PVC SEWER LINE (PRIVATE).
- INSTALL 6"X4" ECCENTRIC REDUCER.
- INSTALL 6" SEWER CLEANOUT. CLEANOUT COVER PER DETAIL 6 SHEET C-11.
- INSTALL 4" SEWER CLEANOUT. CLEANOUT COVER PER DETAIL 6 SHEET C-11.
- INSTALL 4" SDR 35 PVC SEWER LINE (PRIVATE).
- SAND-OIL SEPARATOR (SEE MECHANICAL DRAWINGS FOR DETAILS).
- SAMPLING MANHOLE (SEE MECHANICAL DRAWINGS FOR DETAILS).
- SEE MECHANICAL DRAWINGS FOR CONTINUATION.

DIMENSIONS NOTES

ALL DIMENSIONS ARE TO THE BACK OF CURB UNLESS NOTED OTHERWISE.

BENCHMARK

CITY OF LAS VEGAS STATION: 0LV00 28SEE6, BEING A RIVET & PLATE, NEVADA POWER VAULT #TT-839, 7551 SUMMERLIN PARKWAY ELEV. 2489.56 FEET NAVD88

BASIS OF BEARING

S 88°57'35" W BEING THE NORTH LINE OF THE SOUTHEAST QUARTER (SE 1/4) OF SECTION 28, TOWNSHIP 20 SOUTH, RANGE 60 EAST, M.D.M., CITY OF LAS VEGAS, NEVADA, AS PER RECORD OF SURVEY FILE 74, PAGE 28 OF CLARK COUNTY OFFICIAL RECORDS. SAID LINE ALSO BEING THE CENTERLINE OF WASHINGTON AVENUE.

Avoid cutting underground utility lines. It's costly.
Call before you Dig.
1-800-227-2600
UNDERGROUND SERVICE (USA)

AVOID HITTING OVERHEAD POWER LINES. IT'S COSTLY!
CALL BEFORE YOU DO OVERHEAD
1-702-593-6111