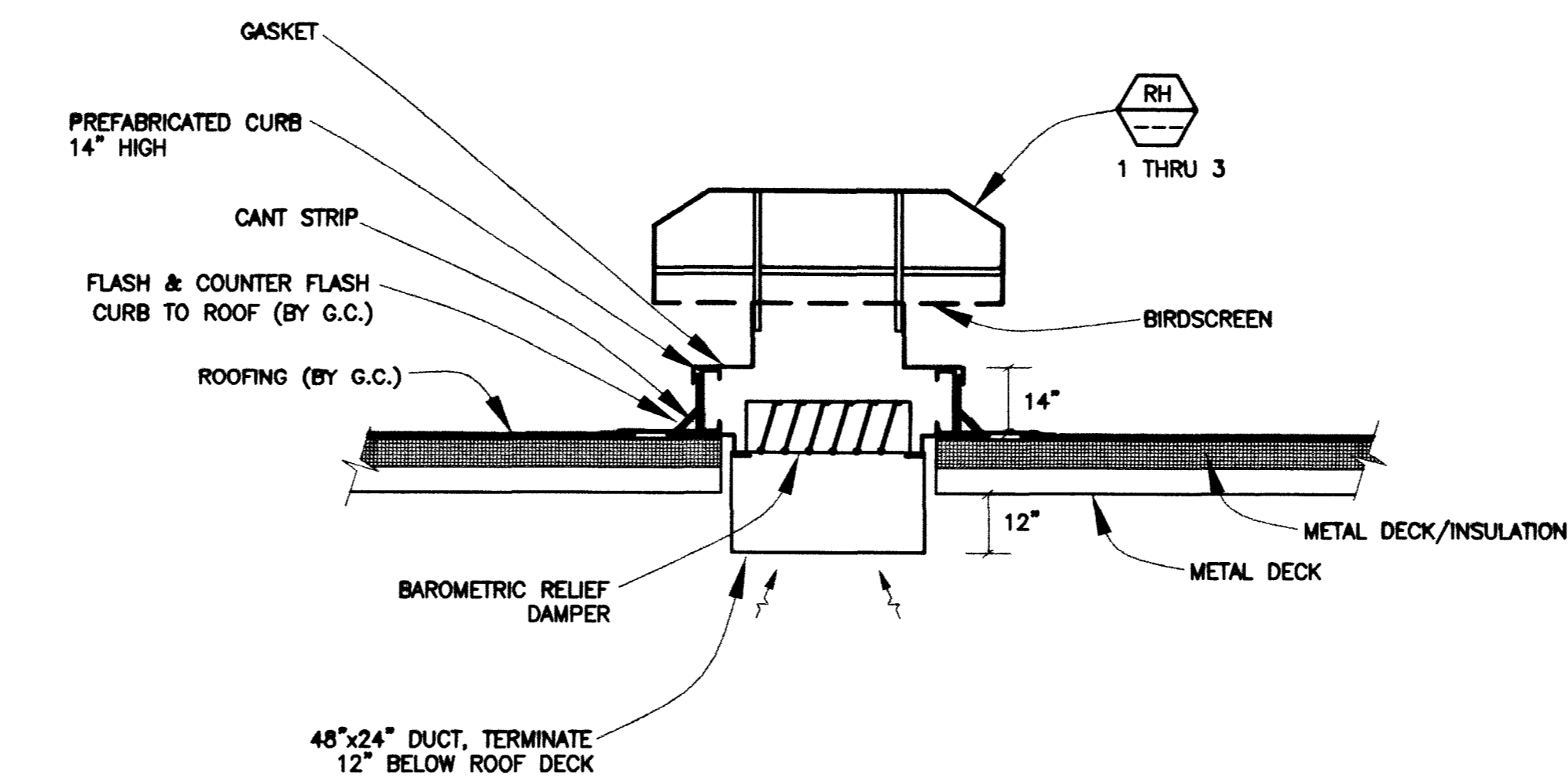


5 DUCT FITTINGS AND INSTALLATION DETAIL

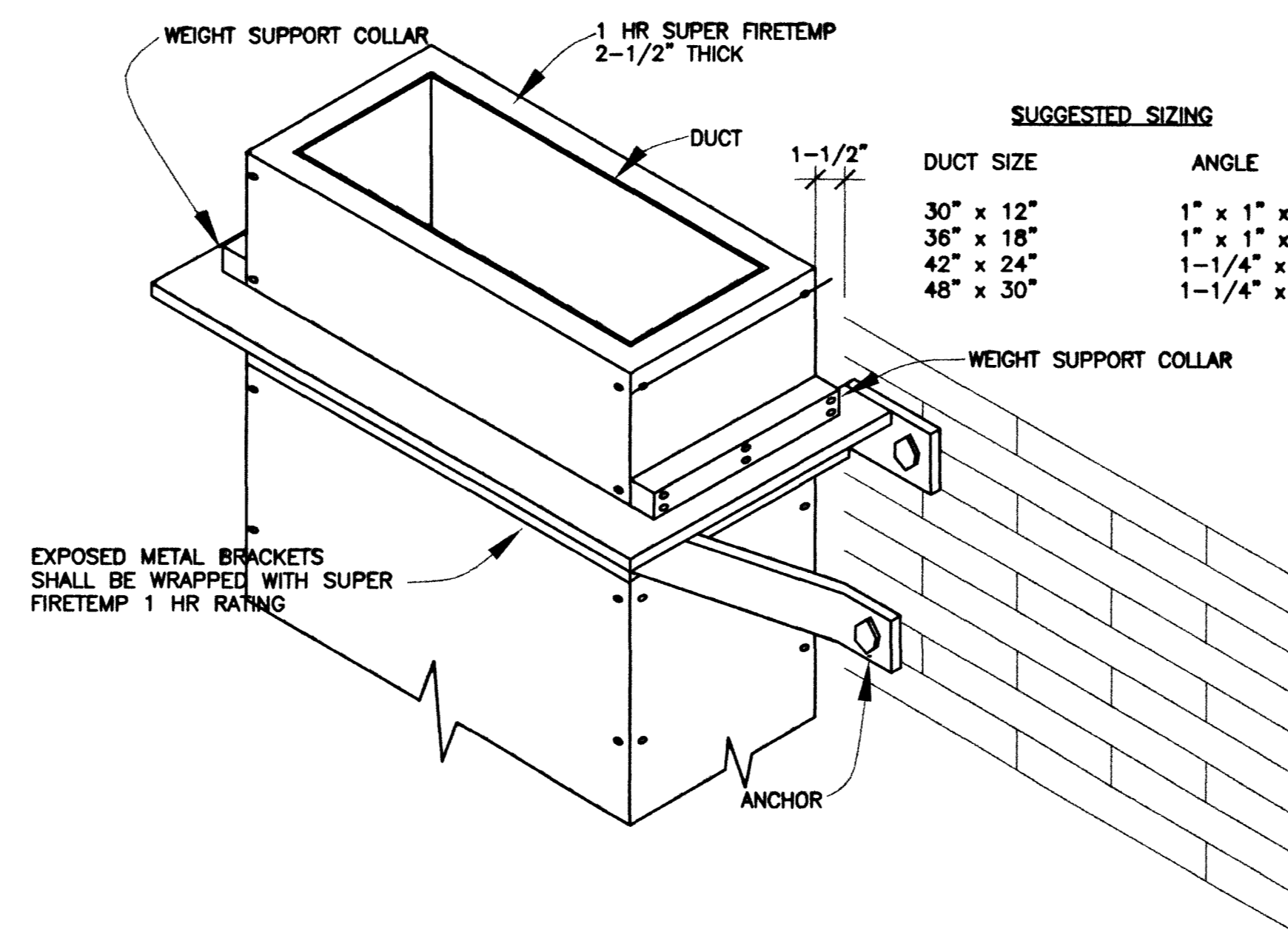
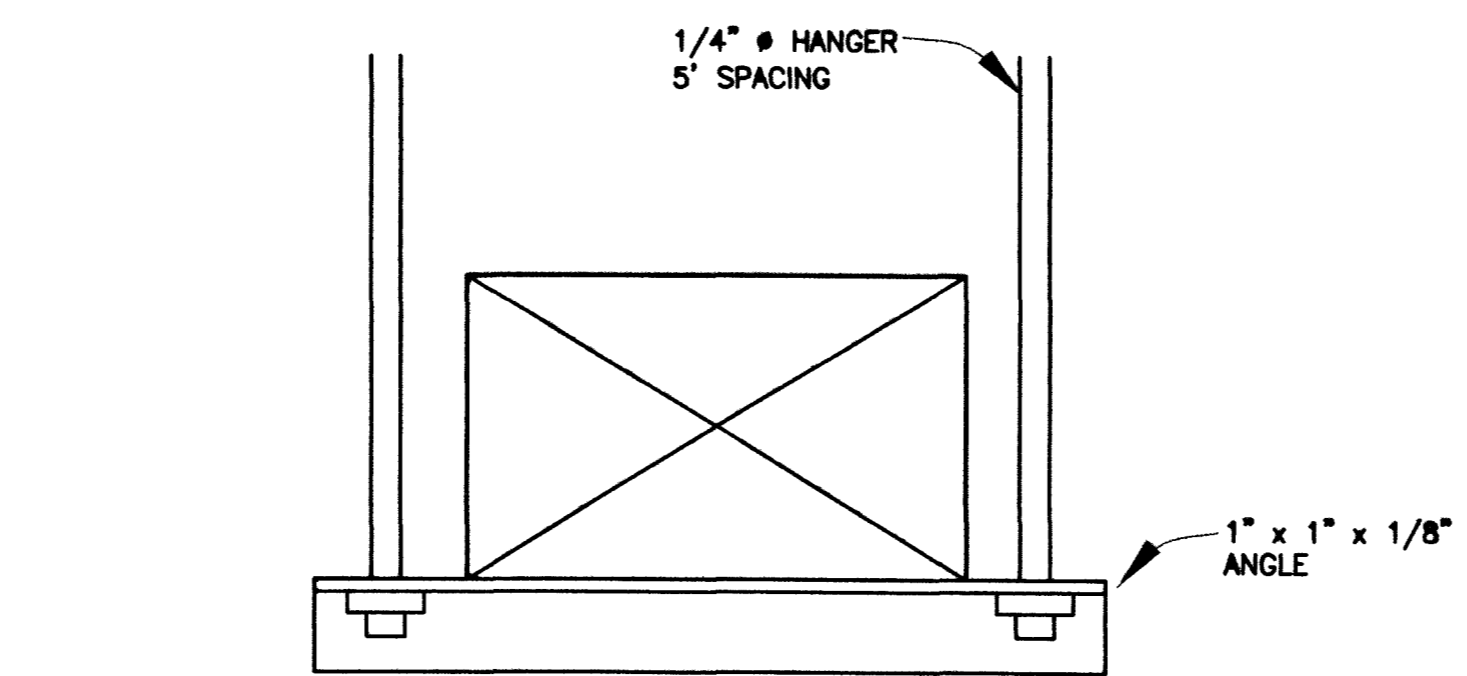
M-07 NO SCALE 57303

- NOTES:
- ACCEPTABLE FITTINGS ARE NOT INTERCHANGEABLE AND DUCT INSTALLATION SHALL MATCH DRAWINGS AS CLOSELY AS POSSIBLE.
 - REFER TO SPECIFICATIONS FOR ADDITIONAL DUCT REQUIREMENTS.



4 RELIEF HOOD DETAIL

M-07 NO SCALE



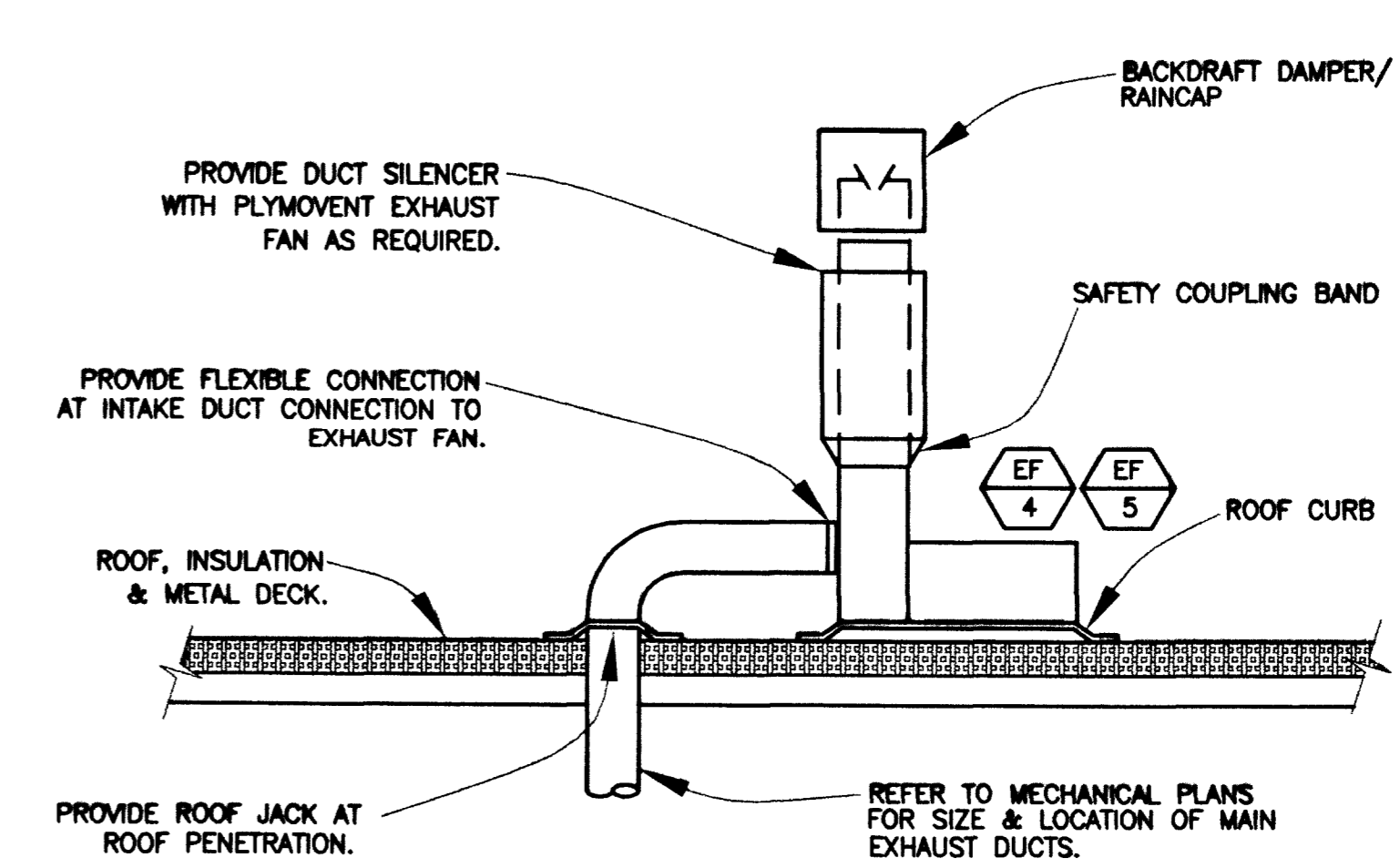
SUGGESTED SIZING

DUCT SIZE	ANGLE
30" x 12"	1" x 1" x 1/8"
36" x 18"	1" x 1" x 1/8"
42" x 24"	1-1/4" x 1-1/4" x 1/8"
48" x 30"	1-1/4" x 1-1/4" x 1/8"

- NOTES:
- BRACKETS ARE SIZED FOR 12 FEET OF DUCT MAXIMUM.
 - LOCATE DUCTS AGAINST WALL OR MAXIMUM OF 4" AWAY FROM WALL.
 - EACH WALL ANCHOR SHALL SATISFY THE FOLLOWING CRITERIA UNLESS OTHER ANALYSIS IS MADE:
 - TENSILE LOAD = 3/8 x DUCT WEIGHT; SAFETY FACTOR OF 4
 - SHEAR LOAD = 1/2 x DUCT WEIGHT; SAFETY FACTOR OF 4

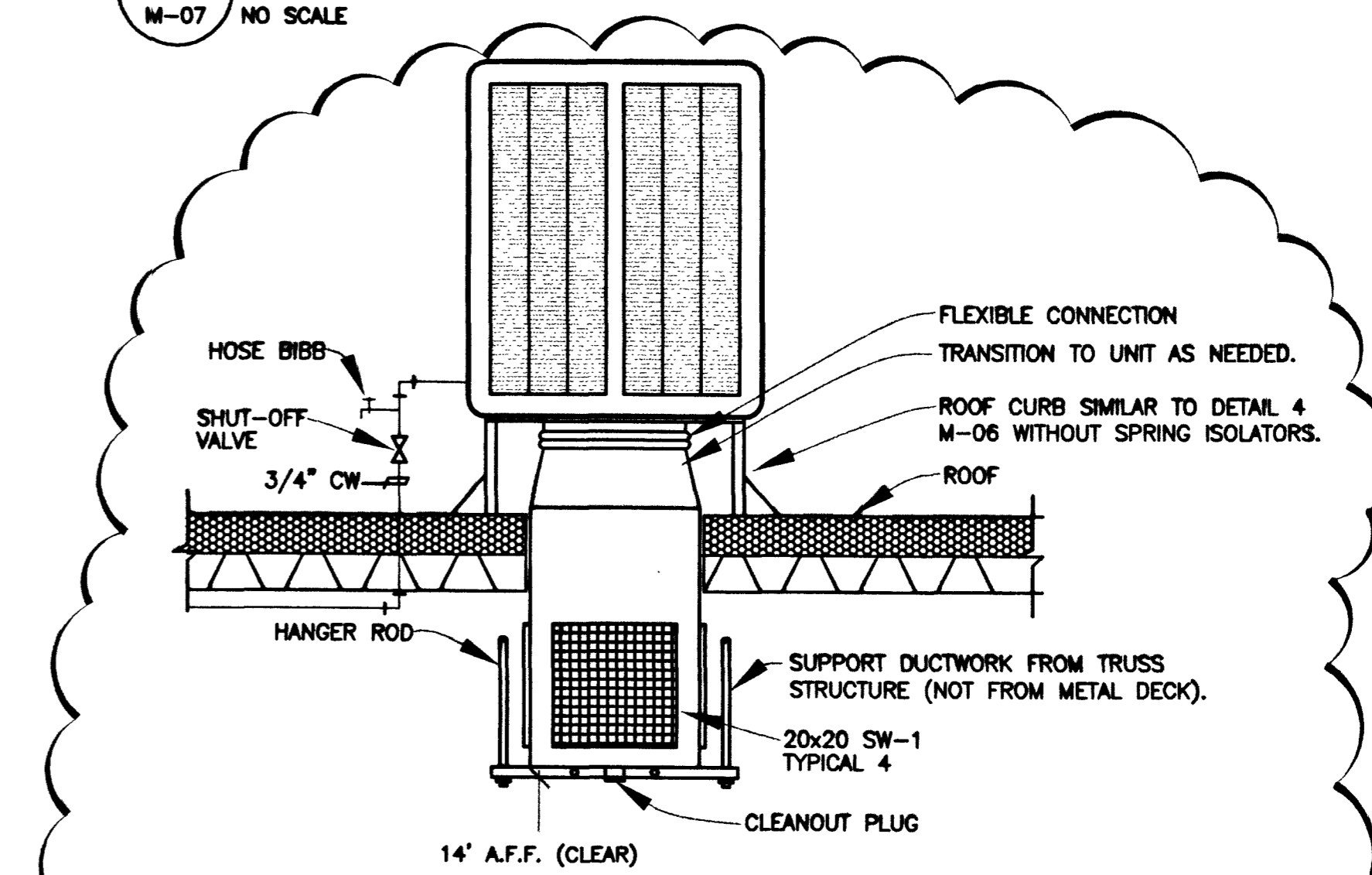
6 GREASE DUCT SUPPORT DETAILS

M-07 NO SCALE



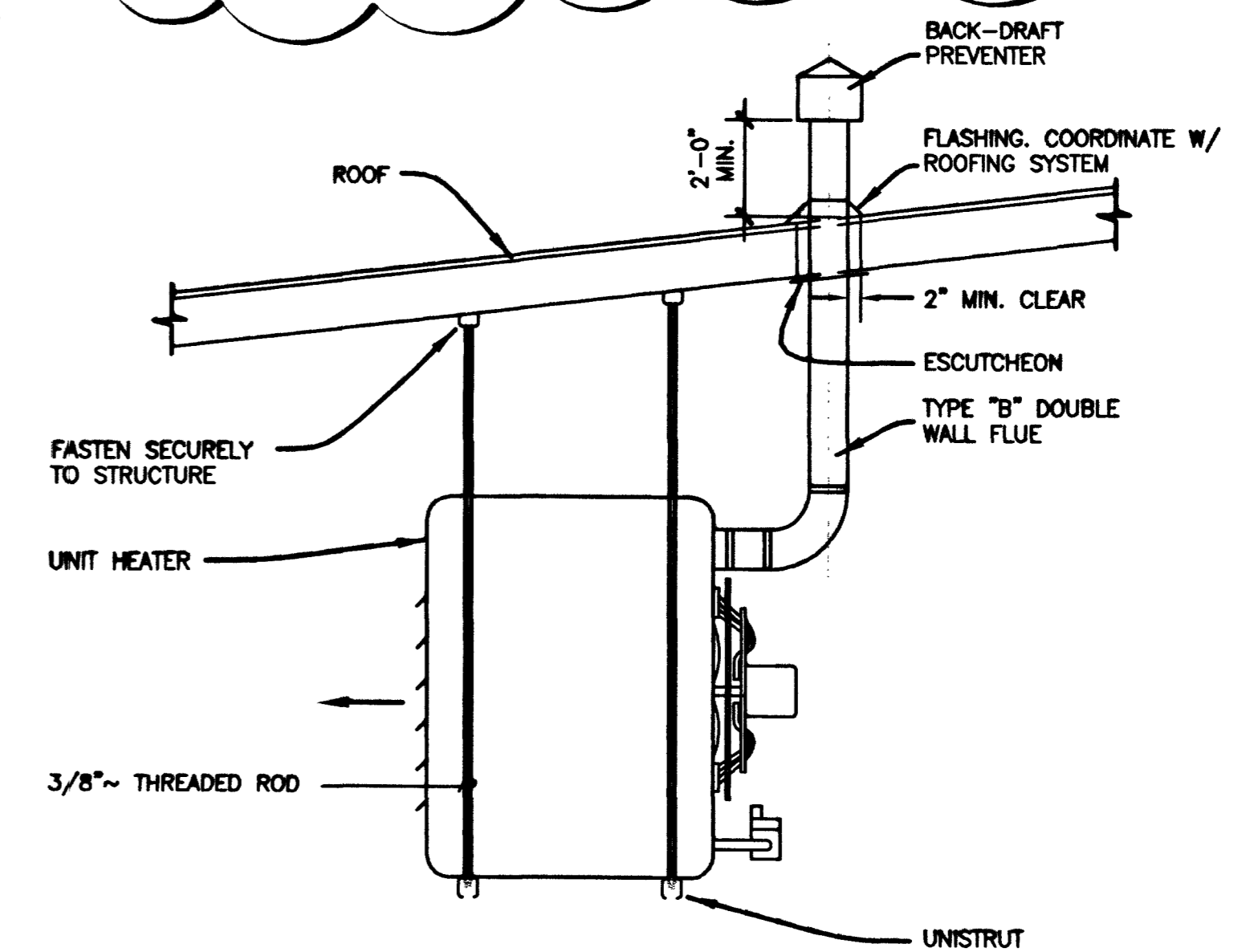
3 VEHICLE EXHAUST FAN DETAIL

M-07 NO SCALE



2 EVAP COOLER MOUNTING DETAIL

M-07 NO SCALE



1 UNIT HEATER DETAIL

M-07 NO SCALE



REVISIONS

CONSULTANT

DEC INC.

2900 So. RANCHO RD.
LAS VEGAS, NEVADA 89102
(702)671-6164

CITY OF LAS VEGAS, NEVADA
FIRE STATION #44
MECHANICAL DETAILS

DEPARTMENT OF PUBLIC WORKS
ARCHITECTURAL SERVICES

400 EAST STEWART AVENUE
LAS VEGAS, NEVADA 89103
PHONE: (702) 223-8333
FAX: (702) 223-8333
WWW: WWW.CITYOFVegas.NV.GOV

DESIGN ENGINEER CONSULTANT

DATE: 7/15/01

SCALE: AS SHOWN

PROJECT: 030.97

SHEET NO: 81 OF 06

M-07

C:\Projects\2000\0002\FIRE STATION #44\MECH\07.dwg, 08/14/2003 04:03:15 PM, Administrator