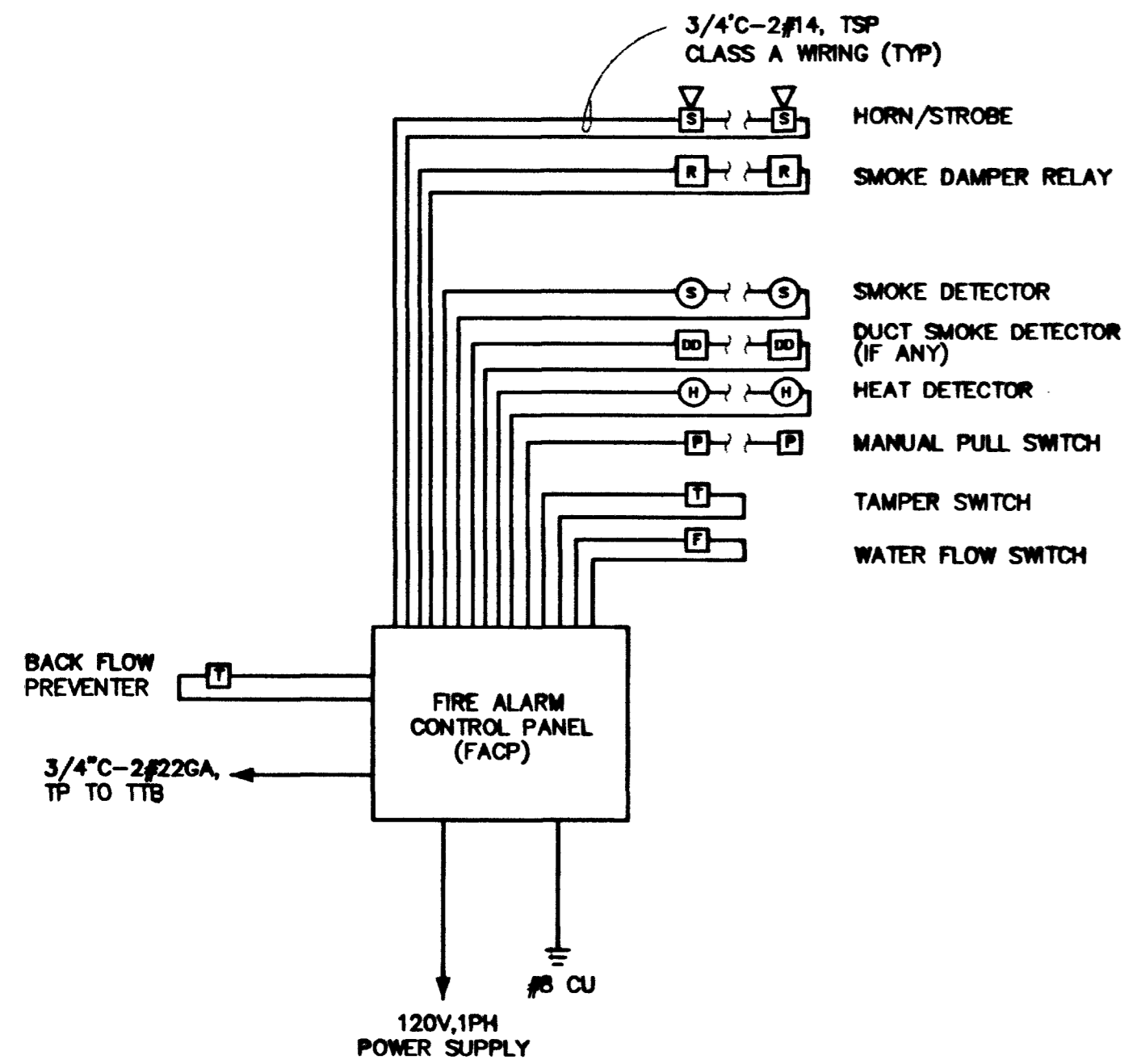


FIRE ALARM RISER DIAGRAM (CLASS A)



SUMMARY OF OPERATION

FIRE ALARM SYSTEM SHALL SUPERVISE SMOKE DETECTORS, MANUAL PULL STATIONS, SMOKE/FIRE DAMPER RELAYS, SYSTEM WATER FLOW, TAMPER SWITCH, AND DUCT DETECTORS.

UPON ACTIVATION OF ANY INITIATION DEVICE, THE DIGITAL ALARM COMMUNICATION TRANSMITTER (DACT) WILL ACTIVATE AND SEND A SIGNAL TO A CENTRAL MONITORING STATION.

UPON ACTIVATION OF TAMPER SWITCH OR BACKFLOW PREVENTER, THE SONALERT AT THE FACP WILL SOUND AND A TROUBLE SIGNAL WILL BE SENT TO THE CENTRAL STATION.

PROVIDE DRY CONTACTS AT FACP FOR CENTRAL STATION MONITORING CONTROL PANEL AND WIRING TO BE COMPLETELY SUPERVISED. ANY OPEN, GROUND OR SHORT TO INDICATE A TROUBLE SIGNAL UPON ACTIVATION OF ANY AIR HANDLER UNITS DUCT DETECTOR, THE RESPECTIVE AIR HANDLER TO SHUT DOWN AND ALL ASSOCIATED SMOKE/FIRE DAMPERS CONNECTED TO THE AIR DISTRIBUTION SYSTEM OF THE RESPECTIVE AIR HANDLER SYSTEM SHALL CLOSE VIA THE FIRE ALARM SYSTEM ACTIVATED SMOKE/FIRE DAMPER RELAYS.

SEE PROJECT SPECIFICATION FOR ADDITIONAL INFORMATION AND REQUIREMENTS REGARDING COMPONENTS AND FUNCTION OF THE FIRE ALARM SYSTEM.

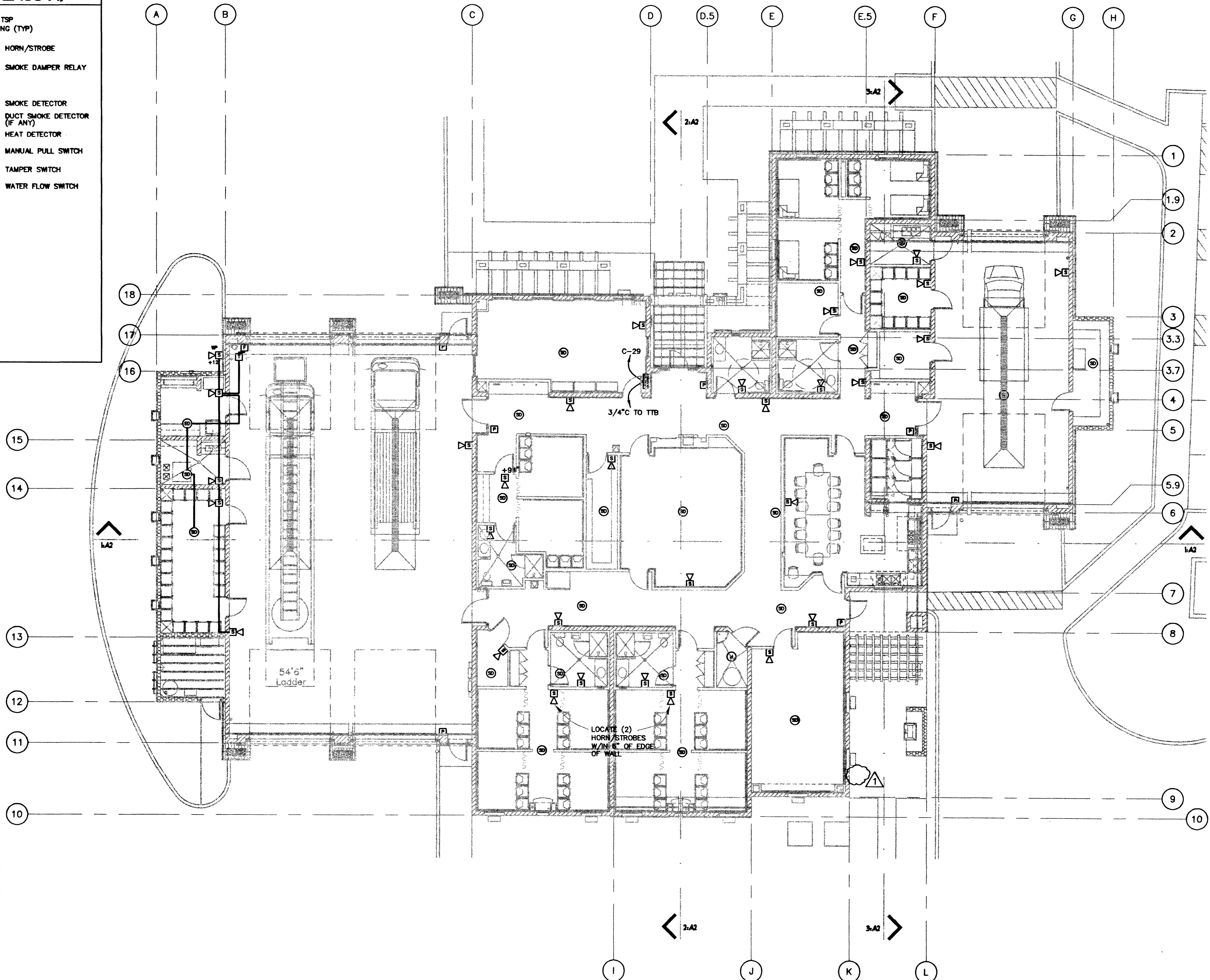
LEGEND

- HORN/STROBE (+82" UNO)
- SMOKE DETECTOR (CEILING MTD)
- TAMPER SWITCH
- FLOW SWITCH
- HEAT DETECTOR
- MANUAL PULL STATION (+48")
- FIRE ALARM CONTROL PANEL
- DUCT SMOKE DETECTOR
- SMOKE DAMPER RELAY

SHEET GENERAL NOTES

- 1 SUPPLIER SHALL SUBMIT DRAWINGS AND OBTAIN APPROVAL FROM FIRE DEPT PRIOR TO THE START OF ANY WORK. STROBE AND HORN SPACINGS AND INTENSITIES SHALL CONFORM TO NFPA 72 AND LOCAL CODES. ADJUST PLANS TO MATCH EQUIPMENT BEING SUPPLIED.
- 2 SUPPLIER SHALL FURNISH A COMPLETE POINT TO POINT WIRING DIAGRAM TO THE ELECTRICAL CONTRACTOR
- 3 FIRE ALARM PANEL SHALL HAVE A 24 HOURS BATTERY BACKUP WITH SUFFICIENT RESERVE TO OPERATE ALL DEVICES FOR 30 MINUTES AFTER A 24 HOUR POWER OUTAGE.
- 4 REFER TO ARCHITECTURAL REFLECTED CEILING PLAN FOR EXACT LOCATIONS OF SMOKE AND HEAT DETECTORS.

57321



ELECTRICAL FIRE ALARM PLAN

SCALE: 1/8"=1'-0"



REVISIONS
6/24/02 CLV REV

CONSULTANT
DEE INC.
2800 SO. RANCHO RD.
LAS VEGAS, NEVADA 89102
(702) 971-6164

CITY OF LAS VEGAS, NEVADA
FIRE STATION #44
ELECTRICAL
FIRE ALARM PLAN

DEPARTMENT OF PUBLIC WORKS
ARCHITECTURAL SERVICES
400 EAST STEWART AVENUE
LAS VEGAS, NEVADA 89101
PHONE: (702) 229-8838
FAX: (702) 382-8232
TDD: (702) 388-8108

DESIGN ENGINEERING CONSULTANT

DRAWN: ADA
DATE: 4/25/01
SCALE: NOTED

PROJECT: G30.97
SHEET: 99 OF 06
E5.1

APPROVED AS AUTHORITY OF RECORD AND THE PROJECT OF THE CITY OF LAS VEGAS, NEVADA, IS THE PROPERTY OF THE CITY OF LAS VEGAS, NEVADA. THE CONSULTANT HAS OBTAINED THE NECESSARY PERMITS AND APPROVALS FROM THE CITY OF LAS VEGAS, NEVADA, AND THE CONSULTANT HAS OBTAINED THE NECESSARY PERMITS AND APPROVALS FROM THE CITY OF LAS VEGAS, NEVADA.