

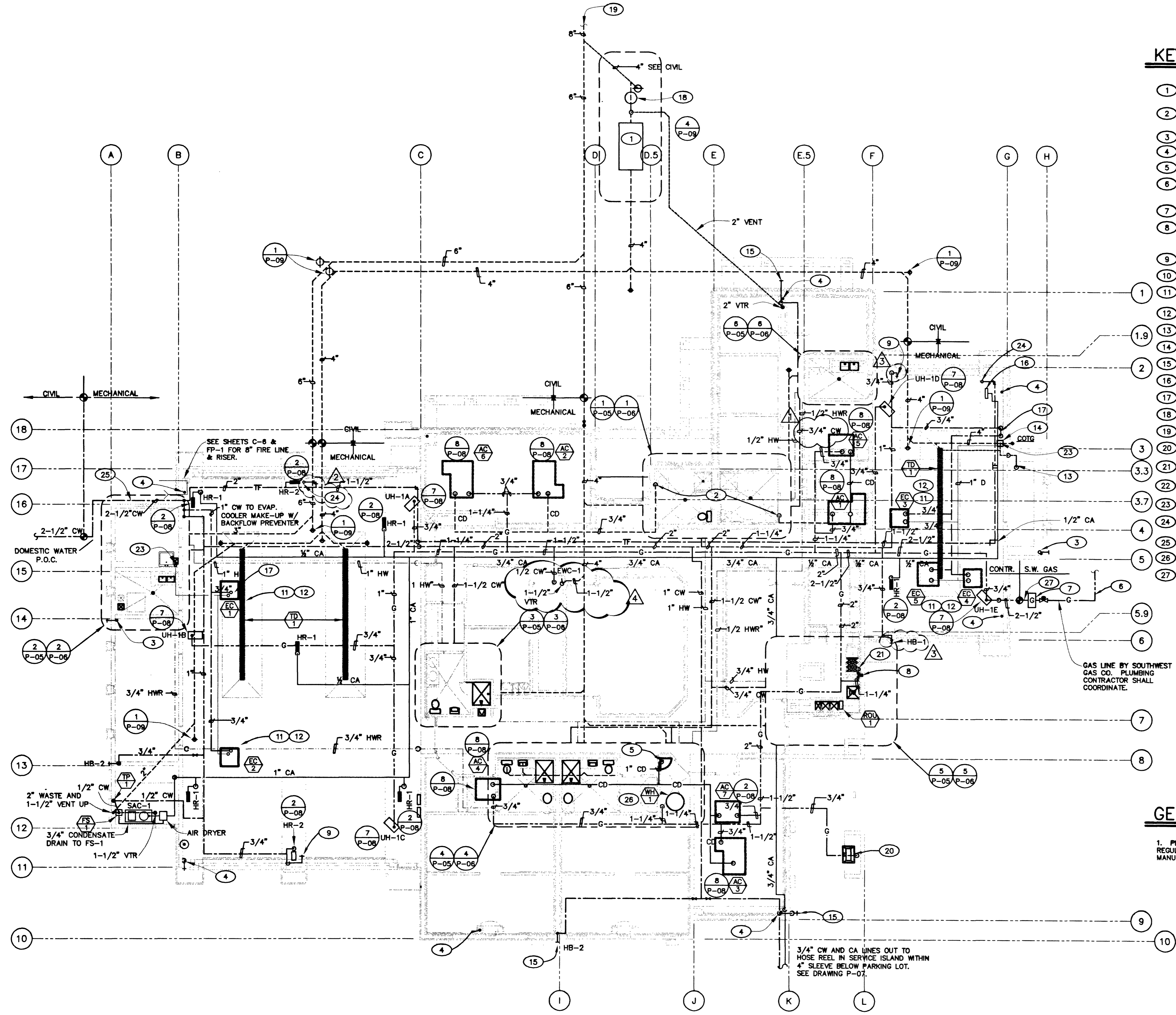


KEYED NOTES (THIS SHEET ONLY)

- 1 JENSEN MODEL 750 EE SAND OIL INTERCEPTOR WITH MODEL 2432-Z SAMPLE BOX SEE CIVIL DRAWINGS FOR EXACT LOCATION.
- 2 3/4" CONDENSATE DRAIN TO LAVATORY TAIL PIECE IS UNDER 200"
- 3 4" ROOF DRAINS. SEE ARCHITECTURAL DRAWINGS AND DET. 5 ON P-08.
- 4 5" ROOF DRAINS SEE ARCHITECTURAL DRAWINGS AND DET. 5 ON P-08.
- 5 1" CONDENSATE DRAIN TO SERVICE SINK
- 6 GAS LINE BY SOUTHWEST GAS CORP. PLUMBING CONTRACTOR TO COORDINATE
- 7 GAS METER, 1218 CFH.
- 8 SOLENOID VALVE (SV-1) TO SHUT OFF GAS TO STOVE BY PLUMBING CONTRACTOR TO STOP GAS FLOW WHEN KITCHEN HOOD IS ON FIRE AND WHEN ANSUL FIRE PROTECTION IS ACTIVATED. SEE ELECTRICAL DRAWINGS. VALVE TO HAVE 120V COIL.
- 9 HB-1
- 10 HR-3 ● FUEL ISLAND
- 11 EVAP COOLER ON ROOF BY MECHANICAL CONTRACTOR, PLUMBING CONTRACTOR TO COORDINATE ALL PLUMBING CONNECTIONS.
- 12 ROUTE 1/2" DCW AND 3/4" DRAINS ON ROOF SEE DET 1/P-08
- 13 1-1/2" VENT THRU ROOF
- 14 FS-1, SEE PLUMBING SCHEDULE.
- 15 HOSE BIBB 2
- 16 HOSE REEL 1 (HR-1) FOR COMPRESSED AIR HOSE
- 17 EVAP COOLER COLD WATER SUPPLY SEE DET 6/P-08 FOR BACK FLOW PREVENTION
- 18 MANHOLE, SEE CIVIL DRAWINGS
- 19 SEE CIVIL DRAWINGS FOR CONTINUATION OF SEWER
- 20 TURBO GSTN BAR-B-QUE SEE 6/A10.1 75MBTUH INPUT
- 21 WOLF CHR-6-1829-HB RANGE 236MBTUH GAS INPUT
- 22 NOT USED
- 23 1" EVAPORATIVE COOLER DRAIN TO FLOOR SINK.
- 24 ROUTE 1-1/2" COLD WATER LINE DOWN TO 36" A.F.F. WITH 2-1/2" QUARTER TURN BALL VALVE. USE NPT THREAD STANDARD (MALE).
- 25 SEE P-04 DET. 4 FOR CW ENTRANCE DETAIL.
- 26 WATER HEATER, SEE P-04 DET. 7
- 27 PROVIDE A TRANSITION FROM METER OUTLET TO 2-1/2".

GENERAL NOTES

- 1. PLUMBING CONTRACTOR TO PROVIDE GAS PRESSURE REGULATOR FOR EACH UNIT HEATER TO MEET GAS MANUFACTURERS RECOMMENDED GAS INLET PRESSURE.



1 PLUMBING PLAN
 P-03 1/8" = 1'-0"

NO.	DATE	REVISIONS
7/3/02		REVISIONS
8/24/02		REVISIONS
12/14/01		REVISIONS

DEC INC
 2800 S.G. RANCHO RD.
 LAS VEGAS, NEVADA 89102
 (702) 871-5154

CITY OF LAS VEGAS, NEVADA
 FIRE STATION #44
 PLUMBING PLAN

DEPARTMENT OF PUBLIC WORKS
 ARCHITECTURAL SERVICES
 400 EAST STEWART AVENUE
 LAS VEGAS, NEVADA 89101
 PHONE: (702) 229-8333
 FAX: (702) 386-8232
 TDD: (702) 386-9108

DATE	BY	SCALE	PROJECT
5/1/06		AS SHOWN	
SHEET NO. 850F 106			
P-03			

C:\projects\200100000241 FIRE STATION #44\MECHP-03.dwg, 08/14/2003 04:39 PM, Administrator

57307