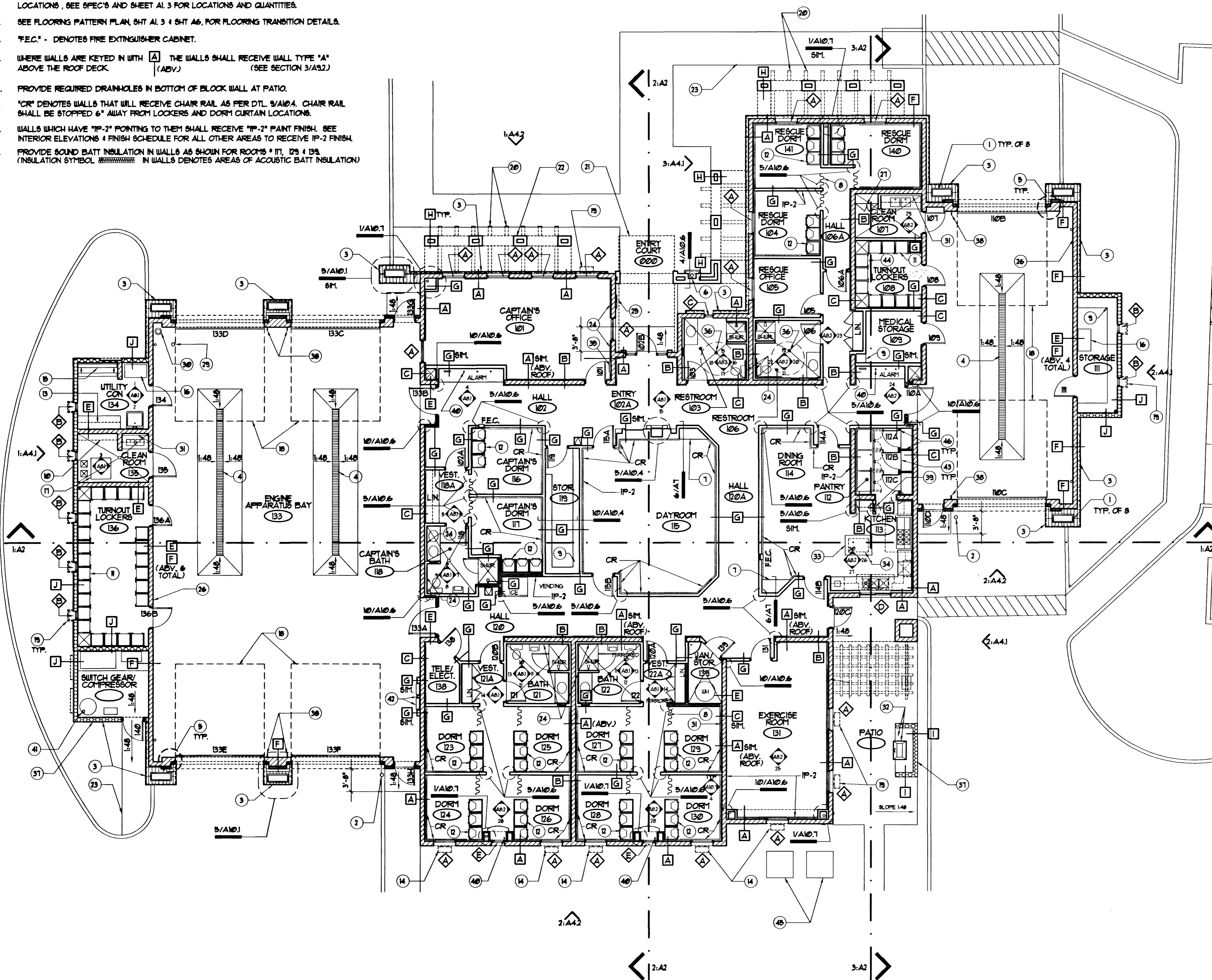


General Notes:

- SEE ROOM FINISH SCHEDULE ON SHT. A6 FOR LOCATIONS OF ALL CHAIR RAILS ON WALLS. SEE DETAIL 5/A10.4 FOR CHAIR RAIL DETAIL.
- ALL ROOM SIGNAGE SHALL BE OWNER PROVIDED, CONTRACTOR INSTALLED. ALL ROOM SIGNAGE SHALL BE MOUNTED AT ADA ACCESSIBLE HEIGHTS & LOCATIONS, SEE SPEC'S AND SHEET A1.3 FOR LOCATIONS AND QUANTITIES.
- SEE FLOORING PATTERN PLAN, SHT. A1.3 & SHT. A6, FOR FLOORING TRANSITION DETAILS.
- "F.E.C." - DENOTES FIRE EXTINGUISHER CABINET.
- WHERE WALLS ARE KEYED IN WITH [A] THE WALLS SHALL RECEIVE WALL TYPE "A" ABOVE THE ROOF DECK (SEE SECTION 3/A3.2)
- PROVIDE REQUIRED DRAINHOLES IN BOTTOM OF BLOCK WALL AT PATIO.
- "CR" DENOTES WALLS THAT WILL RECEIVE CHAIR RAIL AS PER DTL. 5/A10.4. CHAIR RAIL SHALL BE STOPPED 6" AWAY FROM LOCKERS AND DORM CURTAIN LOCATIONS.
- WALLS WHICH HAVE "IP-2" POINTING TO THEM SHALL RECEIVE "IP-2" PAINT FINISH. SEE INTERIOR ELEVATIONS & FINISH SCHEDULE FOR ALL OTHER AREAS TO RECEIVE IP-2 FINISH.
- PROVIDE SOUND BATT INSULATION IN WALLS AS SHOWN FOR ROOMS # 111, 123 & 135. (INSULATION SYMBOL [Hatched Pattern] IN WALLS DENOTES AREAS OF ACOUSTIC BATT INSULATION)



Keynotes

For Floor Plan & Dimension Floor Plan

- DECORATIVE PLANTER BOX, SEE DETAIL 5/A10.1.
- PIPE BOLLARD, SEE DETAIL 6/C1.4.
- EXPOSED CMU WAINSCOT W/ SILL BLOCK, SEE DTL. 1 & 2/A10.1.
- 22'-0" L. TRENCH DRAIN, COORD. W/ PLUMBING CONTRACTOR & SEE PLUMBING & STRUCTURAL DETAILS.
- WALL OFFSET AT ROLL-UP DOOR, SEE DETAIL 4/A10.1.
- EMERGENCY TELEPHONE ALCOVE, SEE DETAIL 4A/A10.6.
- P-LAM. PHONE SHELF @ 36" AFF. SEE DETAIL 6/A1.
- PRIVACY CURTAIN, BY OWNER. 1" CHROME CURTAIN ROD, CONTRACTOR FURNISHED, CONTRACTOR INSTALLED. (PROVIDE SUPPORT BACKING FOR ROD IN WALL).
- FLOOR-TO-CEILING SHELVING AS SHOWN, SEE DETAIL 10/A10.4.
- TURN OUT CLOTHES DRYING ROD (STEEL PIPE W/ WALL BRACKETS). ROD SHALL BE 1-1/2" ID, EXTRA STRONG ROUND STEEL PIPE WITH THREADED CONNECTIONS TO COMPANION FLANGES AT ENDS, BOLTED TO WALL. PROVIDE INTERMEDIATE HORIZONTAL SUPPORT AT MIDPOINT OF ROD. W/ PIPE & FLANGE, ANCHOR TO WALL BEHIND (SEE 3/A8.1). PRIME & PAINT PIPE & ALL FLANGES PER SPECIFICATIONS TO MATCH WALL.
- TURN OUT LOCKERS, SEE SPECIFICATIONS, 24 EA. IN ROOM 136, 11 EA. IN ROOM 108.
- TRI-LOCKER DORM WARDROBE UNIT, SEE DETAIL 12/A10.6.
- UPPER CABINETS, SEE 2/A8.1.
- LINE OF VERTICAL WINDOW SCREEN, SEE SHEET A4.2.
- FIRE HOSE RACK - 3 TIER HIGH, SEE DETAIL 2/A10.6.
- AIR BOTTLE RACK WITH ADJUSTABLE SHELVES ABOVE, SEE DETAIL 1/A10.6 & 1/A8.1. (DISINFECTING SINK NOT REQUIRED IN ROOM #11, PROVIDE ADJUSTABLE SHELVES).
- WASHER/EXTRACTOR - FURNISHED BY OWNER.
- LINE OF ROLL-UP GARAGE DOOR OVERHEAD.
- LINE OF WINDOW CANOPY ABOVE, SEE ELEVATIONS.
- LINE OF STUCCO FINISHED TRELLIS BEAMS ABOVE.
- LINE OF ENTRANCE CANOPY, SEE SHEETS A4.1 & A4.2.
- MTL. STUD FRAMED SHADE STRUCTURE WITH STUCCO FINISH, SEE SHTS A4.1 & A4.2.
- LINE OF CONCRETE WALK, WITH LIGHT BROOM FINISH, SEE CIVIL PLANS FOR CONTINUATION OF SIDEWALK.
- 3 5/8" - 20 GA. MTL. STUD FURRING @ 16" O.C. W/ 5/8" TYPE "X" GYP. BD. (PROVIDE WATER RETARDANT GYP. BD. AT ALL RESTROOM WALLS).
- FIRE DEPARTMENT DEDICATION PLAQUE - SEE DETAILS 2/A2 & 6/A10.3.
- SEE SHEET A4.1 FOR CLERESTORY WINDOWS LOCATED IN THIS WALL.
- 1'-0" H. STORAGE CABINET (P-LAM FINISH), SEE DTL. 29/A8.2.
- NOT USED.
- PIPE BOLLARD FOR FIRE RISER PROTECTION, SEE DTL. 6/C1.4.
- FIRE RISER, SEE SHEET FF-01.
- FURRING TO BE 2" - 25 GA. HAT CHANNELS W/ 5/8" TYPE "X" GYP. BD, FLOOR TO CEILING. EXERCISE RM. SIDE OF WALL NOT TO RECEIVE FURRING, (WHERE APPLIES) BUT SHALL BE PAINTED AND SEALED.
- PREFAB. B2Q UNIT (BY OWNER). TILE COUNTER TOP BY CONTRACTOR (SEE DTL. 6/A10.1).
- FREE STANDING STAINLESS STEEL ISLAND (OWNER FURNISHED).
- STAINLESS STEEL, CEILING MOUNTED POTRACK (CONTRACTOR FURNISHED, CONTRACTOR INSTALLED).
- FIRE ALARM CONTROL PANEL, SEE FIRE ALARM PLAN, SHEET E-5.1.
- FLOOR DRAIN, SEE PLUMBING DRAWINGS.
- LEAVE OUT GROUT AT HEAD JOINTS BETWEEN EVERY BLOCK AT FIRST COURSE OF MASONRY ABOVE PATIO SLAB ONLY. (VOIDS IN HEAD JOINTS SHALL ACT TO PROVIDE POSITIVE DRAINAGE FOR PATIO SLAB).
- MAIN OVERHEAD DOOR CONTROLS, SEE ELECTRICAL DIAGS.
- RECESSED PAPER TOWEL DISPENSER. SEE BATH ACCESSORY SCHEDULE ON SHEETS A8.1 & A8.2 FOR MODEL NUMBERS.
- COORDINATE EXACT LOCATION OF GROMMETS IN COUNTERTOP W/ OWNER PRIOR TO FABRICATION OF COUNTERTOP.
- FLOOR SINK, SEE MECHANICAL DRAWINGS.
- ELECTRICAL PANELS INSIDE 3-5/8" MTL. STUD FURRED WALL (WALL SHALL BE 5'-10" W. X 14'-0" H.) WALL SHALL BE FINISHED W/ GUB AT TOP & SIDES.
- PROVIDE ADJUSTABLE 3/4" PLYWOOD SHELVES, (18" DEEP X WIDTH OF PANTRIES). PROVIDE H.P.L. (LAM-1) FINISH ON ALL EXPOSED EDGES. BUILD SHELVES PER DTL. 10/A10.4.
- PROVIDE TWO-TIER LOCKERS ALONG THIS WALL ONLY, SEE SPECIFICATIONS.
- TEMPORARY CONCRETE SLAB FOR FLOOR FINISH MOCKUP, SEE SHT A1.3.
- WALL IN PANTRY 112A CONTAINING DOORS 112A, 112B & 112C AND DIVIDER WALLS BETWEEN THESE DOORS SHALL BE CONSTRUCTED OF 2" - 20 GA. METAL STUDS @ 16" O.C. W/ 5/8" TYPE "X" GYP. BD. @ BOTH SIDES OF WALL, FULL HT.

Noted Floor Plan

Scale: 1/8"=1'-0"
57252

Project North ▲



REVISIONS

| NO. | DATE | DESCRIPTION |
|-----|------|-------------|
| | | |
| | | |
| | | |

CONSULTANT

DEPARTMENT OF PUBLIC WORKS

CITY OF LAS VEGAS, NEVADA
FIRE STATION #44

Noted Floor Plan

OWNER: CITY OF LAS VEGAS
DEPARTMENT OF PUBLIC WORKS
ARCHITECTURAL SERVICES

400 EAST STEWART AVENUE
LAS VEGAS, NEVADA 89101
PHONE: (702) 229-6535
FAX: (702) 382-3232
TDD: (702) 386-9108

DRAWN: EFS
FILE: 144-A1-1
DATE: 10/29/01
SCALE: 1/8" = 1'-0"
NO. NO: 02.15341.02
CITY DWG NO: 630.97
30 OF 106
SHEET NO: A1.1

RECORD DRAWING