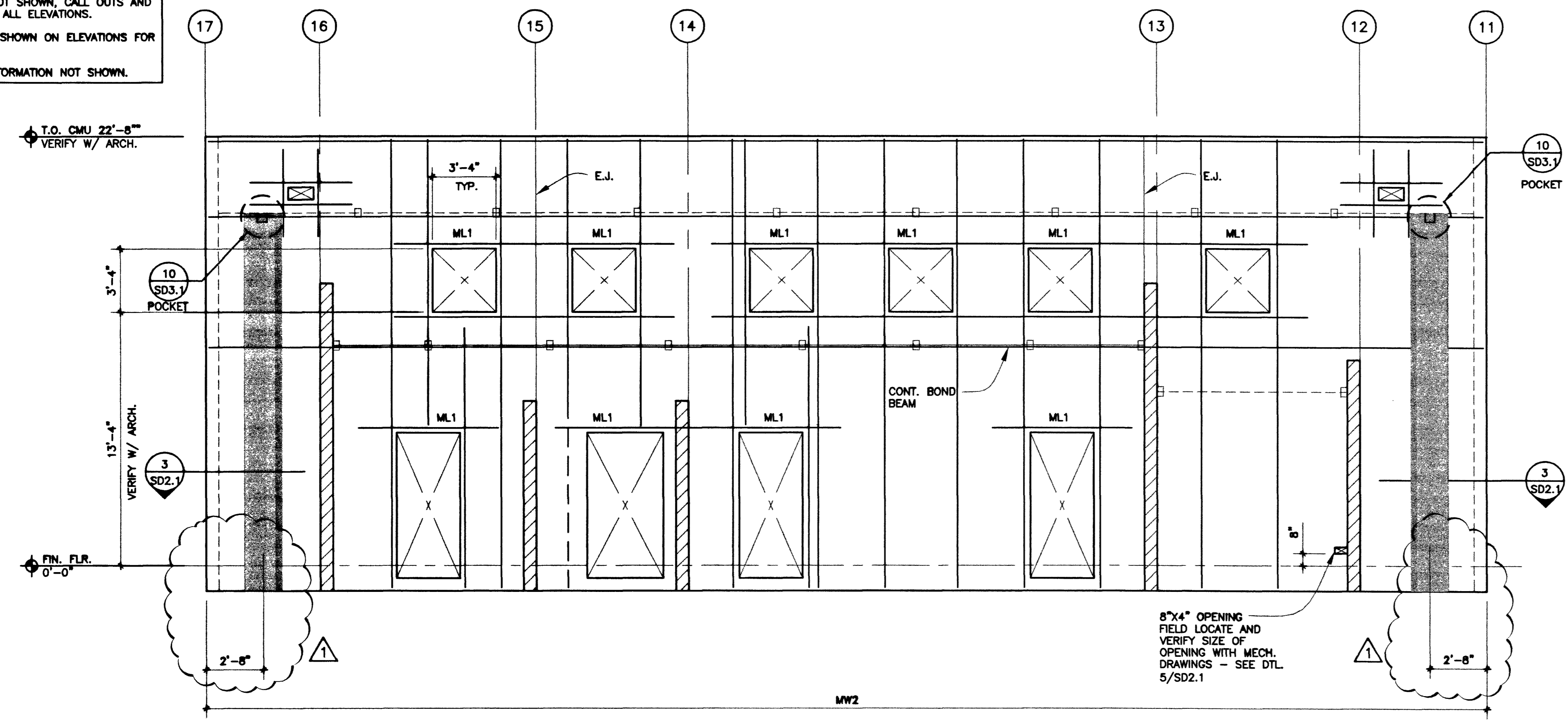
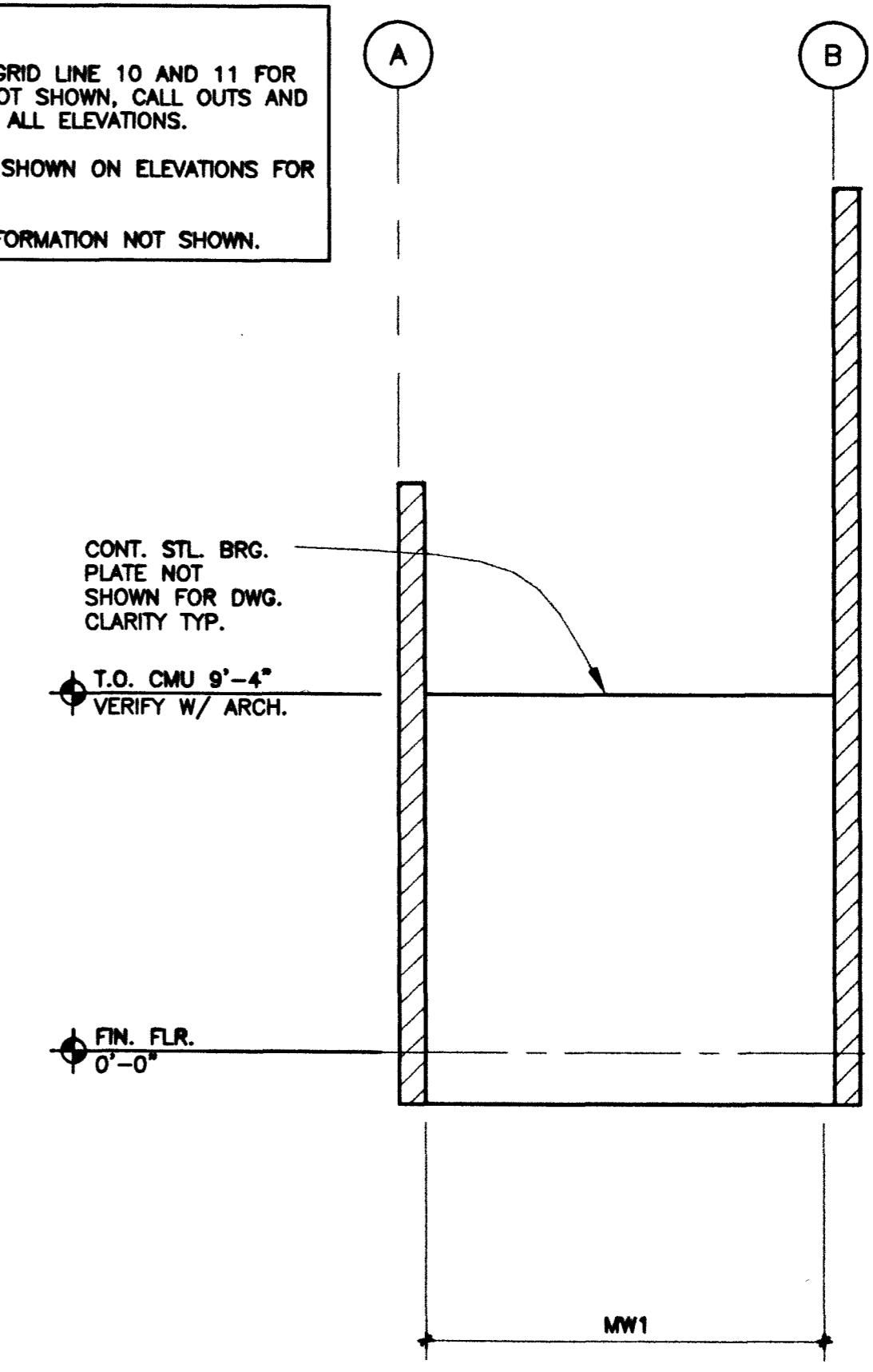


NOTE:  
 1. SEE ELEVATION AT GRID LINE 10 AND 11 FOR TYPICAL REINFORCING NOT SHOWN, CALL OUTS AND DETAILS THAT APPLY TO ALL ELEVATIONS.  
 2. EB1 AND EB2 NOT SHOWN ON ELEVATIONS FOR DRAWING CLARITY.  
 3. SEE PLANS FOR INFORMATION NOT SHOWN.



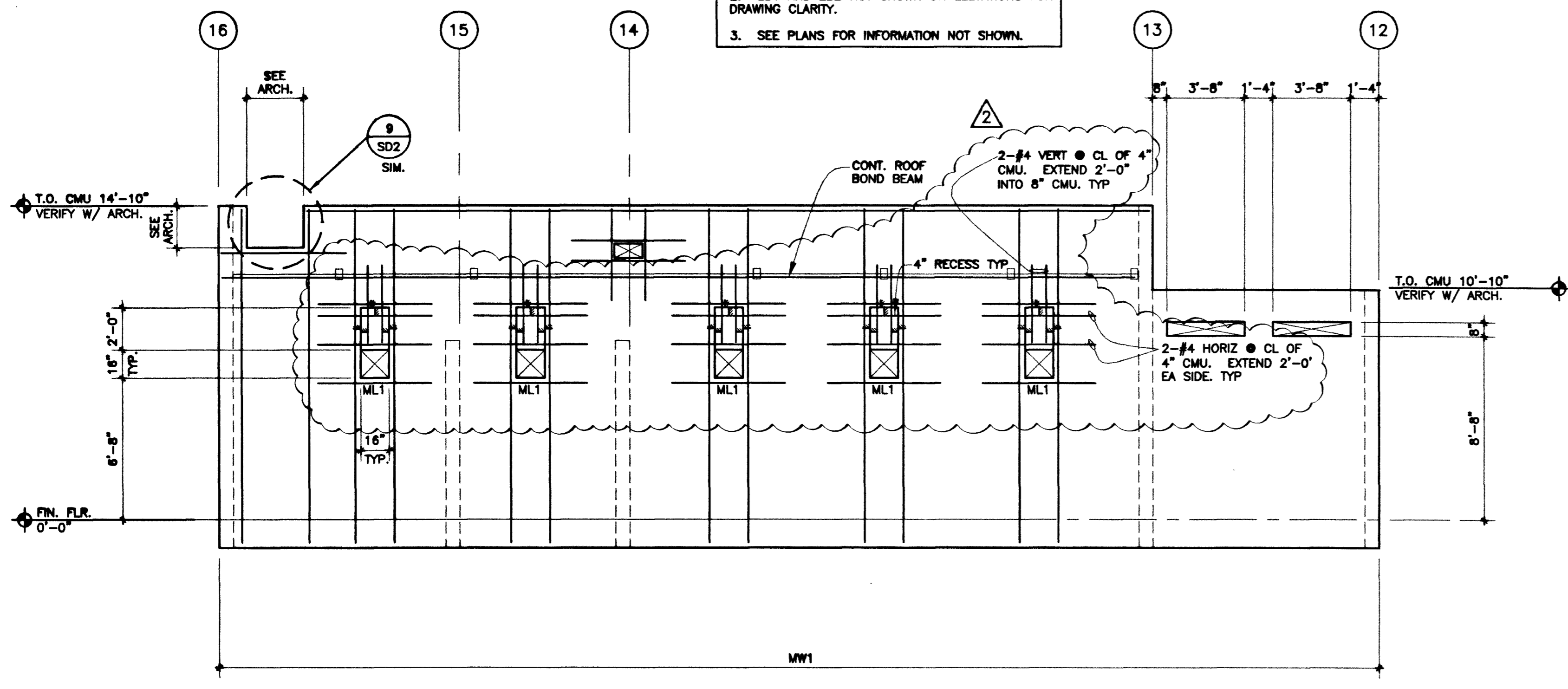
**CMU WALL ELEVATION AT GRID LINE B**  
 1/4" = 1'-0"

NOTE:  
 1. SEE ELEVATION AT GRID LINE 10 AND 11 FOR TYPICAL REINFORCING NOT SHOWN, CALL OUTS AND DETAILS THAT APPLY TO ALL ELEVATIONS.  
 2. EB1 AND EB2 NOT SHOWN ON ELEVATIONS FOR DRAWING CLARITY.  
 3. SEE PLANS FOR INFORMATION NOT SHOWN.



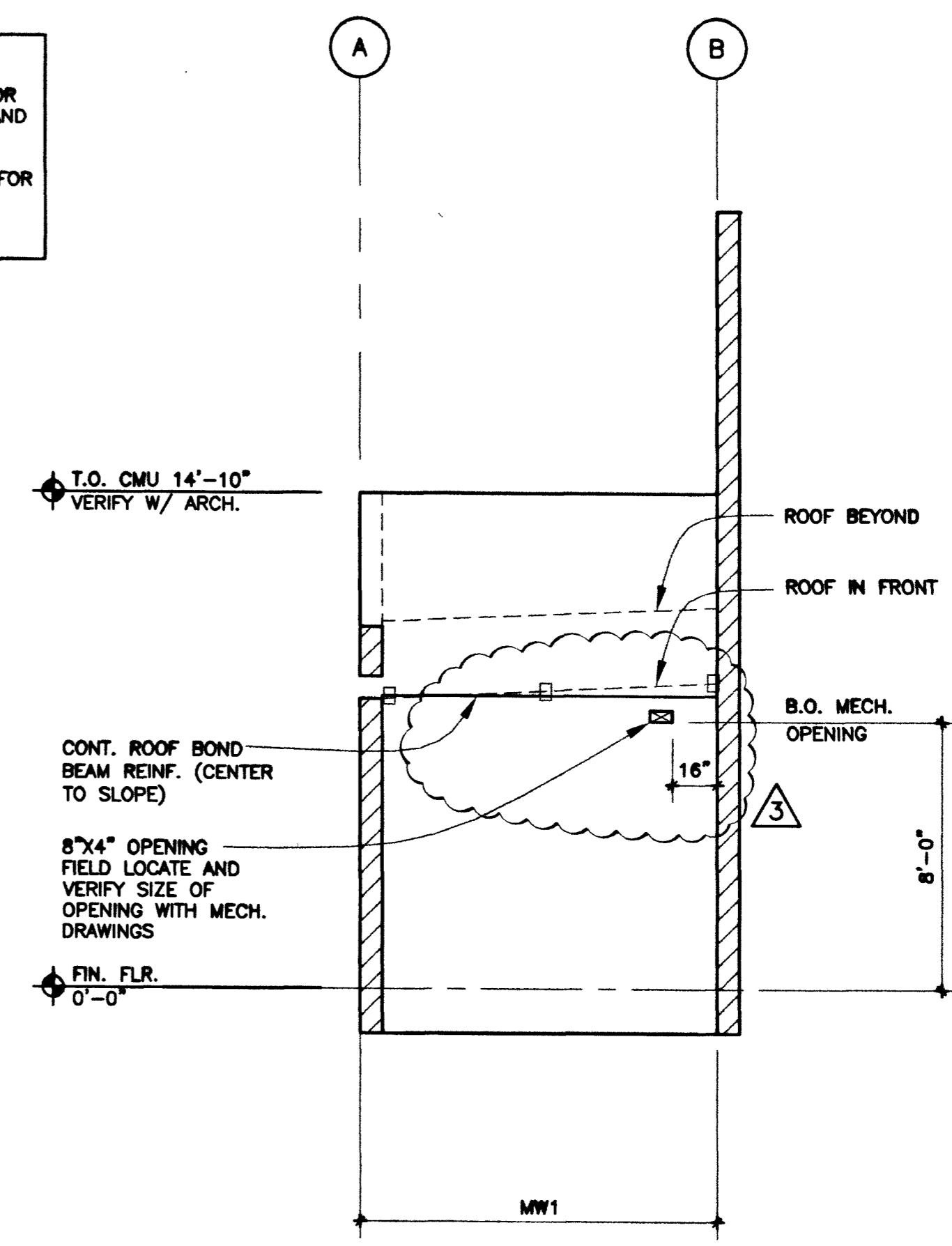
**CMU WALL ELEVATION AT GRID LINE 14**  
 1/4" = 1'-0"

NOTE:  
 1. SEE ELEVATION AT GRID LINE 10 AND 11 FOR TYPICAL REINFORCING NOT SHOWN, CALL OUTS AND DETAILS THAT APPLY TO ALL ELEVATIONS.  
 2. EB1 AND EB2 NOT SHOWN ON ELEVATIONS FOR DRAWING CLARITY.  
 3. SEE PLANS FOR INFORMATION NOT SHOWN.



**CMU WALL ELEVATION AT GRID LINE A**  
 1/4" = 1'-0"

NOTE:  
 1. SEE ELEVATION AT GRID LINE 10 AND 11 FOR TYPICAL REINFORCING NOT SHOWN, CALL OUTS AND DETAILS THAT APPLY TO ALL ELEVATIONS.  
 2. EB1 AND EB2 NOT SHOWN ON ELEVATIONS FOR DRAWING CLARITY.  
 3. SEE PLANS FOR INFORMATION NOT SHOWN.



**CMU WALL ELEVATION AT GRID LINE 13**  
 1/4" = 1'-0"



REVISIONS

3	10-25-01	REV WALL ELEVATION SCUPPER
2	10-12-01	REVISION BLDG DEPT RESUBMITTAL
1	8-6-01	REVISION BLDG DEPT RESUBMITTAL

DESIGNER: DEUC INC.  
 2800 S. RANCHO RD.  
 LAS VEGAS, NEVADA 89102  
 (702) 871-8164

CITY OF LAS VEGAS, NEVADA  
 FIRE STATION #44  
 CMU WALL ELEVATION

DEPARTMENT OF PUBLIC WORKS  
 ARCHITECTURAL SERVICES

400 EAST STEWART AVENUE  
 LAS VEGAS, NEVADA 89101  
 PHONE: (702) 229-8338  
 FAX: (702) 382-5232  
 TDD: (702) 382-9108

DESIGN ENGINEERING CONSULTANTS

DRAWN	JLB
FILE	
DATE	7/28/01
SCALE	AS NOTED
PROJECT	640P106
REV NO	S4.5

C:\Project\20000000241 FIRE STATION #44\STRUCTURE\0.dwg, 08/14/2003 04:20:32 PM, Administrator