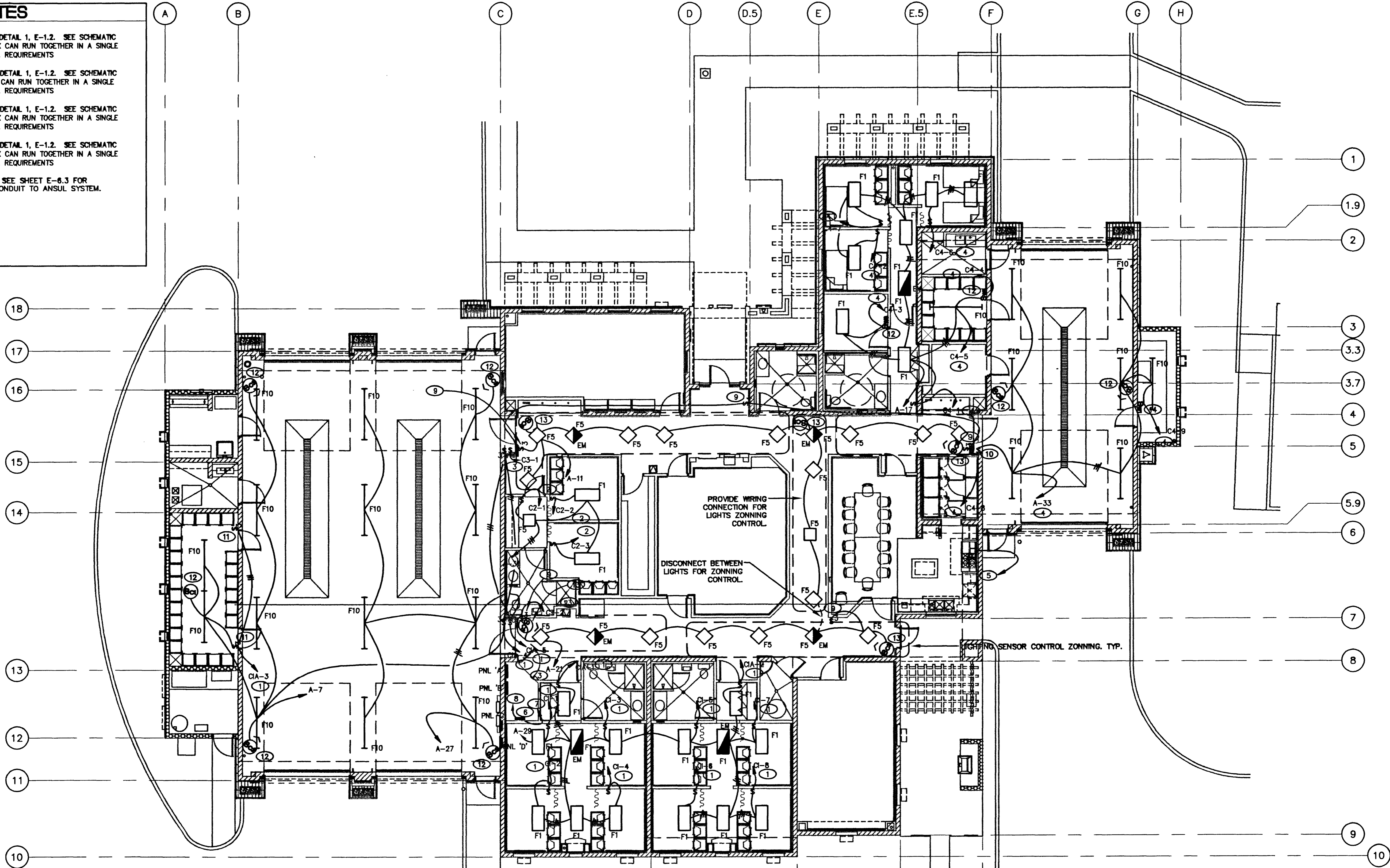


SHEET NOTES

- ① ROUTE CIRCUIT THRU (AREA 1) CONTACTORS. SEE DETAIL 1, E-1.2. SEE SCHEMATIC ON SHEET E.2. CIRCUITS GOING TO THE RELAY BOX CAN RUN TOGETHER IN A SINGLE CONDUIT. UPSIZE WIRE & CONDUIT TO MEET N.E.C. REQUIREMENTS
- ② ROUTE CIRCUIT THRU (AREA 2) CONTACTORS. SEE DETAIL 1, E-1.2. SEE SCHEMATIC ON SHEET E.2. CIRCUITS GOING TO THE RELAY BOX CAN RUN TOGETHER IN A SINGLE CONDUIT. UPSIZE WIRE & CONDUIT TO MEET N.E.C. REQUIREMENTS
- ③ ROUTE CIRCUIT THRU (AREA 3) CONTACTORS. SEE DETAIL 1, E-1.2. SEE SCHEMATIC ON SHEET E.2. CIRCUITS GOING TO THE RELAY BOX CAN RUN TOGETHER IN A SINGLE CONDUIT. UPSIZE WIRE & CONDUIT TO MEET N.E.C. REQUIREMENTS
- ④ ROUTE CIRCUIT THRU (AREA 4) CONTACTORS. SEE DETAIL 1, E-1.2. SEE SCHEMATIC ON SHEET E.2. CIRCUITS GOING TO THE RELAY BOX CAN RUN TOGETHER IN A SINGLE CONDUIT. UPSIZE WIRE & CONDUIT TO MEET N.E.C. REQUIREMENTS
- ⑤ LOCATION OF GAS SHUTOFF SOLENOID VALVE. SEE SHEET E-6.3 FOR SCHEMATICS. VERIFY EXACT LOCATION. RUN CONDUIT TO ANSUL SYSTEM.
- ⑥ CAD LIGHTING CONTROLLER RELAY BOX.
- ⑦ (3) 3/4" C TO ALARM J-BOX.
- ⑧ (2) 3/4" C TO TTB.



LIGHTING CONTROL NOTES

- ⑨ HALLWAY 3-WAY/4-WAY LIGHTING SWITCH TO BE REMOVED. COORDINATE WIRING FOR LIGHTING SENSOR FOR LIGHTING CONTROL IN THE ZONNING AREA.
- ⑩ NOT USED.
- ⑪ 3-WAY SWITCH TO BE REMOVED. COORDINATE WIRING WITH CEILING SENSOR THIS ROOM FOR LIGHTING CONTROL.
- ⑫ BAY AREA LIGHTING SENSOR. MOUNT SENSOR ON WALL 14' AFF. AIMING SENSOR AS INDICATED BY AN ARROW.
- ⑬ HALLWAY LIGHTING SENSOR. MOUNTED ON CEILING. AIMING SENSOR AS INDICATED BY AN ARROW.
- ⑭ PROVIDE NEW WALL SENSOR TO REPLACE WALL SWITCH.
- ⑮ NOT USED.

Lighting Sensor Schedule

SENSOR ID	TYPE	MANUFACTURER & CATALOG NO.	POWER PACK
S01	INFRARED WALL SENSOR	MYTECH LP-2-W	NO
S02	ULTRASONIC WALL SENSOR	MYTECH LH-US-RR-W	NO
S03	WALL SENSOR	MYTECH LH-MT-W	NO
S04	INFRARED & ULTRASONIC CEILING SENSOR	MYTECH CPNI-DT2000	MP-126A
S05	INFRARED WIDE VIEW CEILING/WALL SENSOR	MYTECH LO-IR-WV	MP-126A
S06	INFRARED HIGH BAY CEILING/WALL SENSOR	MYTECH LO-HB	MP-126A

THIS SHEET SERVES AS AN ADDENDUM TO SHEET E1.2 BY ADDING LIGHTING SENSORS AND THEIR ASSOCIATED NOTES & WIRING.

SHEET GENERAL NOTES

1. ALL EXPOSED J BOXES UP TO 5' AFF IN THE APPARATUS BAY SHALL BE HANDI BOXES.
2. ALL CAD LIGHTING CONTROL THROUGH PRE WIRED CONTACTORS SHALL BE REMAIN AS IS UNO.
3. REFER TO MYTECH'S SPECIFICATIONS FOR LIGHTING SENSOR WIRING REQUIREMENTS.
4. REFER TO LIGHTING SENSOR SCHEDULE ON SHEET ES1.1 FOR SENSOR TYPE.

ELECTRICAL CAD LIGHTING PLAN

SCALE: 1/8"=1'-0"



57317



REVISIONS	
DATE	
BY	
DESCRIPTION	

CONSULTANT	
DATE	
BY	
DESCRIPTION	

CITY OF LAS VEGAS, NEVADA
FIRE STATION #44
ELECTRICAL CAD LIGHTING SENSOR PLAN

STAMP	
DATE	
BY	
DESCRIPTION	

OWNER: CITY OF LAS VEGAS
DEPARTMENT OF FIELD OPERATIONS
FACILITIES MANAGEMENT

310 EAST BONANZA ROAD
LAS VEGAS, NEVADA 89101
PHONE: (702) 229-5220
FAX: (702) 382-0619
TDD: (702) 386-9108

DRAWN	WJ
FILE	FIRE/NO/CS/ESOR
DATE	8/8/02
SCALE	1/8"=1'-0"
REV NO	02.15341.02
CLYD NO	630.97
	95 OF 106
SHR NO	

ES1.2

DRAWING IS INSTRUMENTS OF SERVICE AND THE PROPERTY OF THE DESIGN PROFESSIONAL. THESE DRAWINGS ARE STRICTLY FOR THE PROJECT FOR WHICH THEY WERE PREPARED AND NOT FOR THE CONSTRUCTION OF ANY OTHER PROJECT. A. C. BELL, INC.