



REVISED
CONSULTANT
DEC 16, 2004
DEC INC.
2900 SO. RANCHO RD.
LAS VEGAS, NEVADA 89102
(702) 871-6164

CITY OF LAS VEGAS, NEVADA
FIRE STATION #44
ELECTRICAL CAD
LIGHTING PLAN

DEPARTMENT OF PUBLIC WORKS
ARCHITECTURAL SERVICES
400 EAST STEWART AVENUE
LAS VEGAS, NEVADA 89101
PHONE: (702) 225-8534
FAX: (702) 882-8223
TDD: (702) 886-8108

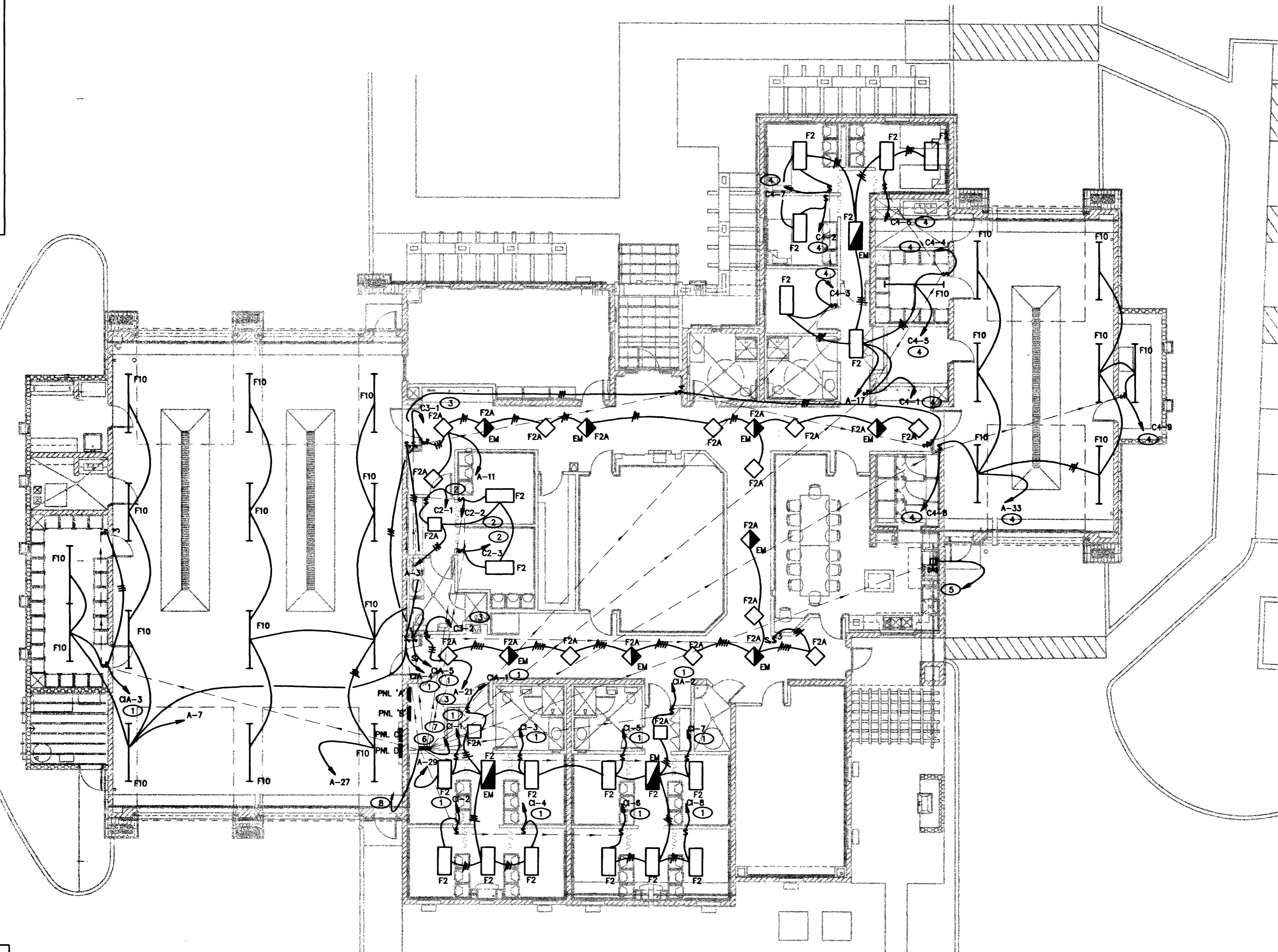
DESIGN ENGINEERING CONSULTANT

OWNER:	AOA
DATE:	4/30/04
SCALE:	AS SHOWN
PROJECT:	G30-97
SHEET NO.:	94 OF 106
	E-1.2

UNLESS SHOWN OTHERWISE, ALL WORK SHALL BE IN ACCORDANCE WITH THE CITY OF LAS VEGAS ELECTRICAL CODE AND THE NATIONAL ELECTRICAL CODE (NEC) AS AMENDED. THE CONSULTANT SHALL BE RESPONSIBLE FOR OBTAINING ALL NECESSARY PERMITS AND FOR THE PROTECTION OF ALL EXISTING UTILITIES. THE CONSULTANT SHALL BE RESPONSIBLE FOR THE PROTECTION OF ALL EXISTING UTILITIES. THE CONSULTANT SHALL BE RESPONSIBLE FOR THE PROTECTION OF ALL EXISTING UTILITIES.

SHEET NOTES

- 1 ROUTE CIRCUIT THRU (AREA 1) CONTACTORS. SEE DETAIL 1, E-1.2. SEE SCHEMATIC ON SHEET 6.4. CIRCUITS GOING TO THE RELAY BOX CAN RUN TOGETHER IN A SINGLE CONDUIT. UPSIZE WIRE & CONDUIT TO MEET N.E.C. REQUIREMENTS
- 2 ROUTE CIRCUIT THRU (AREA 2) CONTACTORS. SEE DETAIL 1, E-1.2. SEE SCHEMATIC ON SHEET 6.4. CIRCUITS GOING TO THE RELAY BOX CAN RUN TOGETHER IN A SINGLE CONDUIT. UPSIZE WIRE & CONDUIT TO MEET N.E.C. REQUIREMENTS
- 3 ROUTE CIRCUIT THRU (AREA 3) CONTACTORS. SEE DETAIL 1, E-1.2. SEE SCHEMATIC ON SHEET 6.4. CIRCUITS GOING TO THE RELAY BOX CAN RUN TOGETHER IN A SINGLE CONDUIT. UPSIZE WIRE & CONDUIT TO MEET N.E.C. REQUIREMENTS
- 4 ROUTE CIRCUIT THRU (AREA 4) CONTACTORS. SEE DETAIL 1, E-1.2. SEE SCHEMATIC ON SHEET 6.4. CIRCUITS GOING TO THE RELAY BOX CAN RUN TOGETHER IN A SINGLE CONDUIT. UPSIZE WIRE & CONDUIT TO MEET N.E.C. REQUIREMENTS
- 5 LOCATION OF GAS SHUTOFF SOLENOID VALVE. SEE SHEET E-8.3 FOR SCHEMATICS. VERIFY EXACT LOCATION. RUN CONDUIT TO ANSUL SYSTEM.
- 6 CAD LIGHTING CONTROLLER RELAY BOX.
- 7 (3) 3/4" C TO ALARM J-BOX. LOCATED AT ALARM STATION IN HALL 102.
- 8 (2) 3/4" C TO ITB.
- 9 J-BOX IN JAN/STOR ROOM 139 IS FOR CIRCULATION PUMP.



SHEET GENERAL NOTES

1. ALL EXPOSED J BOXES UP TO 5' AFF IN THE APPARATUS BAY SHALL BE HANDI BOXES.

1 ELECTRICAL CAD LIGHTING PLAN
1/8" = 1'-0"

57316

Q:\Projects\2000\000241 FIRE STATION #44\ELE\E1.2.dwg, 05/14/2003 03:46:00 PM, Administrator