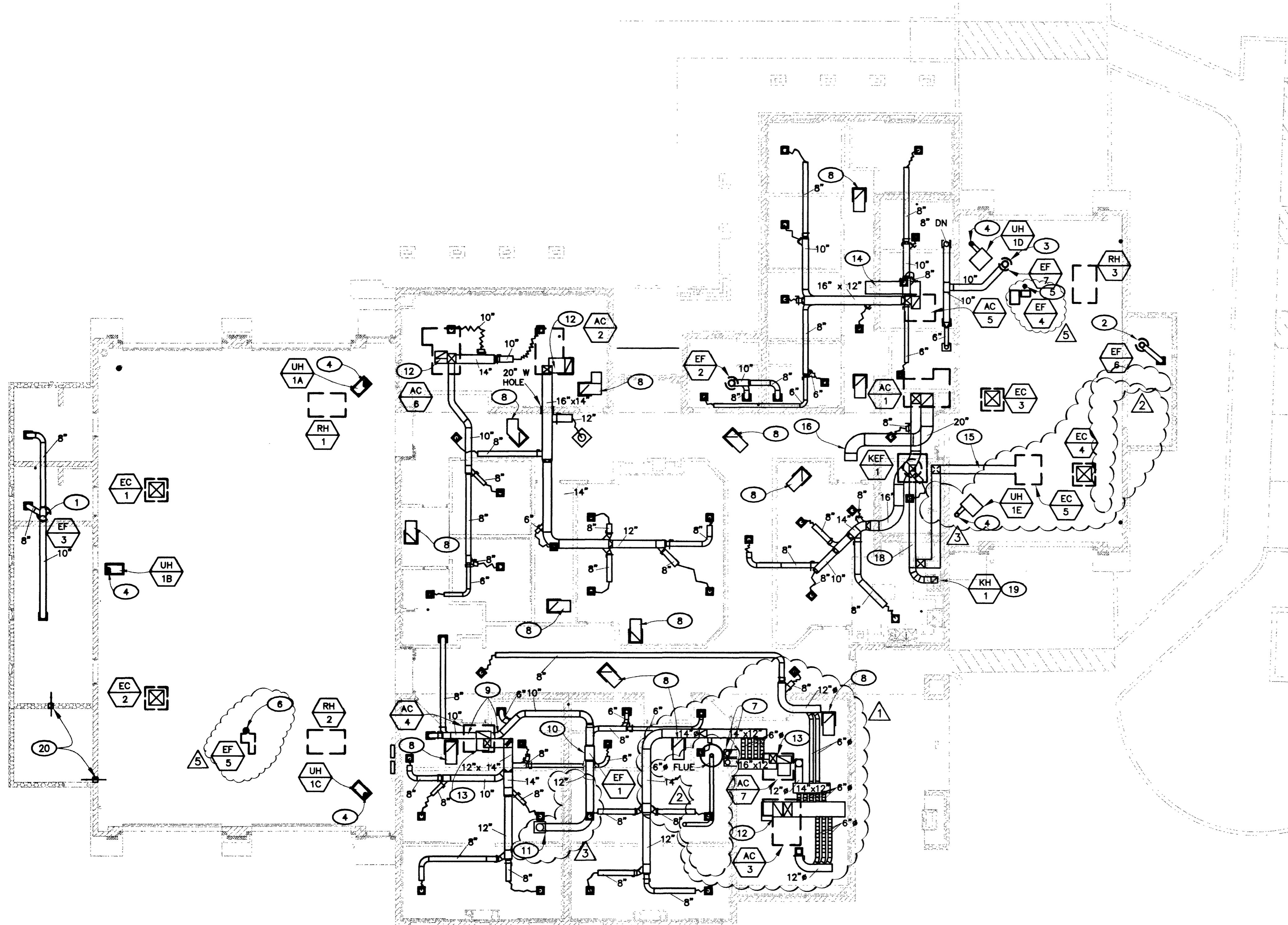


SHEET NOTES: (THIS SHEET ONLY)

- 1 12" EXHAUST DUCT UP TO EF-3 ON ROOF (600 CFM)
- 2 8" EXHAUST DUCT UP TO EF-6 ON ROOF
- 3 10" EXHAUST DUCT UP TO EF-7 ON ROOF
- 4 4" FLUE FROM UNIT HEATERS THROUGH ROOF
- 5 6" DIAMETER DUCT UP TO EF-4 ON ROOF
- 6 8" DIAMETER DUCT UP TO EF-5 ON ROOF
- 7 TWO 8" COMBUSTION AIR DUCTS. TERMINATE ONE DUCT 6" FROM CEILING AND EXTEND THE OTHER DUCT WITHIN 1 FT. FROM FIN. FLOOR. PROVIDE DUCT TRANSITION AND CONNECT TO 1-EACH 12" x 8" COMBUSTION AIR LOUVER, WITH BIRD SCREEN. SEE SHEET M-03 FOR LOUVER LOCATION.
- 8 EXTEND 20" x 12" SOUND TRAP AS SHOWN
- 9 EXHAUST DUCT PASSES BENEATH PLENUMS
- 10 EF- 1 IN ATTIC SEE INLINE EXHAUST FAN DETAIL 2/M-06.
- 11 12" DIA. EXHAUST DISCHARGE THRU ROOF WITH GREENHECK ROOF CAP MODEL GRS-12. CONTRACTOR TO PROVIDE ROOF CURB. SEE M-03 FOR CONTINUATION.
- 12 PROVIDE 20" x 20" RETURN AIR DUCT ABOVE CEILING
- 13 PROVIDE 24" x 12" RETURN AIR DUCT ABOVE CEILING
- 14 PROVIDE 20" x 14" RETURN AIR DUCT ABOVE CEILING
- 15 RUN 14" x 14" MAKE UP AIR DUCT ABOVE ROOF DECK AND PENETRATE ROOF ABOVE PANTRY.
- 16 20" x 20" RETURN AIR DUCT
- 17 TRANSFER GRILL, PRICE 500, 8" x 4"
- 18 KITCHEN EXHAUST HOOD DUCT SIZE 10"x10", WITH SUPER FIRETEMP WRAP 1-HR RATING. UL LISTED.
- 19 KITCHEN HOOD TYPE I, 66"x48".
- 20 8"x4" TRANSFER GRILLE



1 ATTIC HVAC PLAN
M-02 1/8" = 1'-0"

57298



5	7-24-02	MISLABELED EXH. FANS
3	5/24/02	REVISIONS
2	12/14/01	REVISIONS
1	8-27-01	REVISIONS

DEUC INC.
2800 S. RANCHO RD.
LAS VEGAS, NEVADA 89102
(702)871-6154

CITY OF LAS VEGAS, NEVADA
FIRE STATION #44
ATTIC HVAC PLAN

DEPARTMENT OF PUBLIC WORKS
ARCHITECTURAL SERVICES
400 EAST STEWART AVENUE
LAS VEGAS, NEVADA 89001
PHONE: (702) 226-8338
FAX: (702) 382-8232
TDD: (702) 388-2258

DESIGN ENGINEERING CONSULTANT

DATE	7/15/01
SCALE	AS SHOWN
PROJECT	636.97
SHEET NO.	76 OF 106

M-02