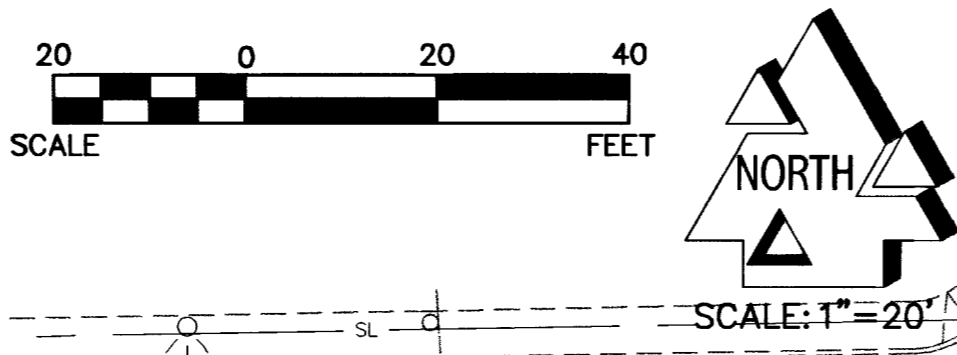
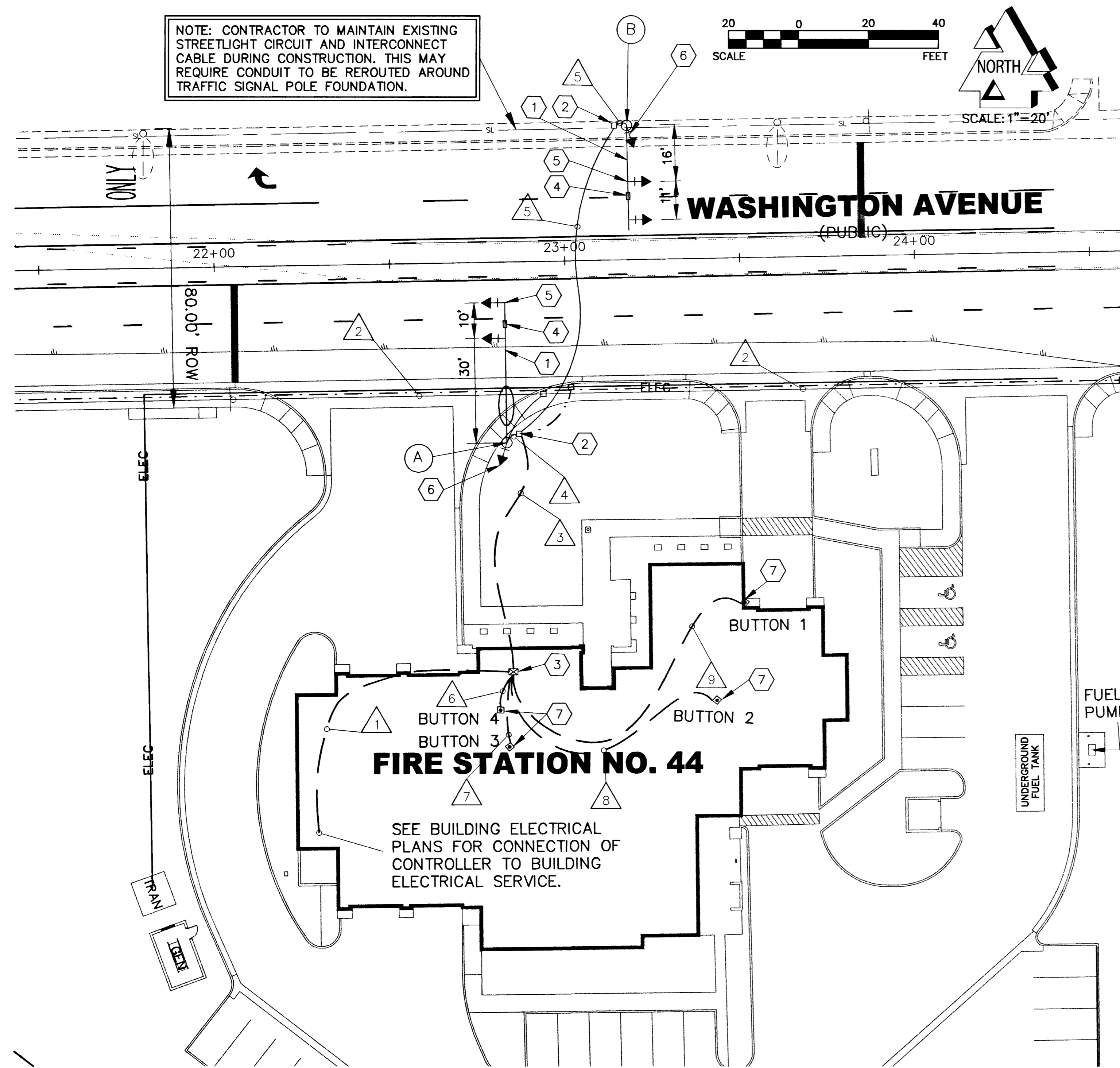


NOTE: CONTRACTOR TO MAINTAIN EXISTING STREETLIGHT CIRCUIT AND INTERCONNECT CABLE DURING CONSTRUCTION. THIS MAY REQUIRE CONDUIT TO BE REROUTED AROUND TRAFFIC SIGNAL POLE FOUNDATION.



CITY OF LAS VEGAS TRAFFIC SIGNAL NOTES

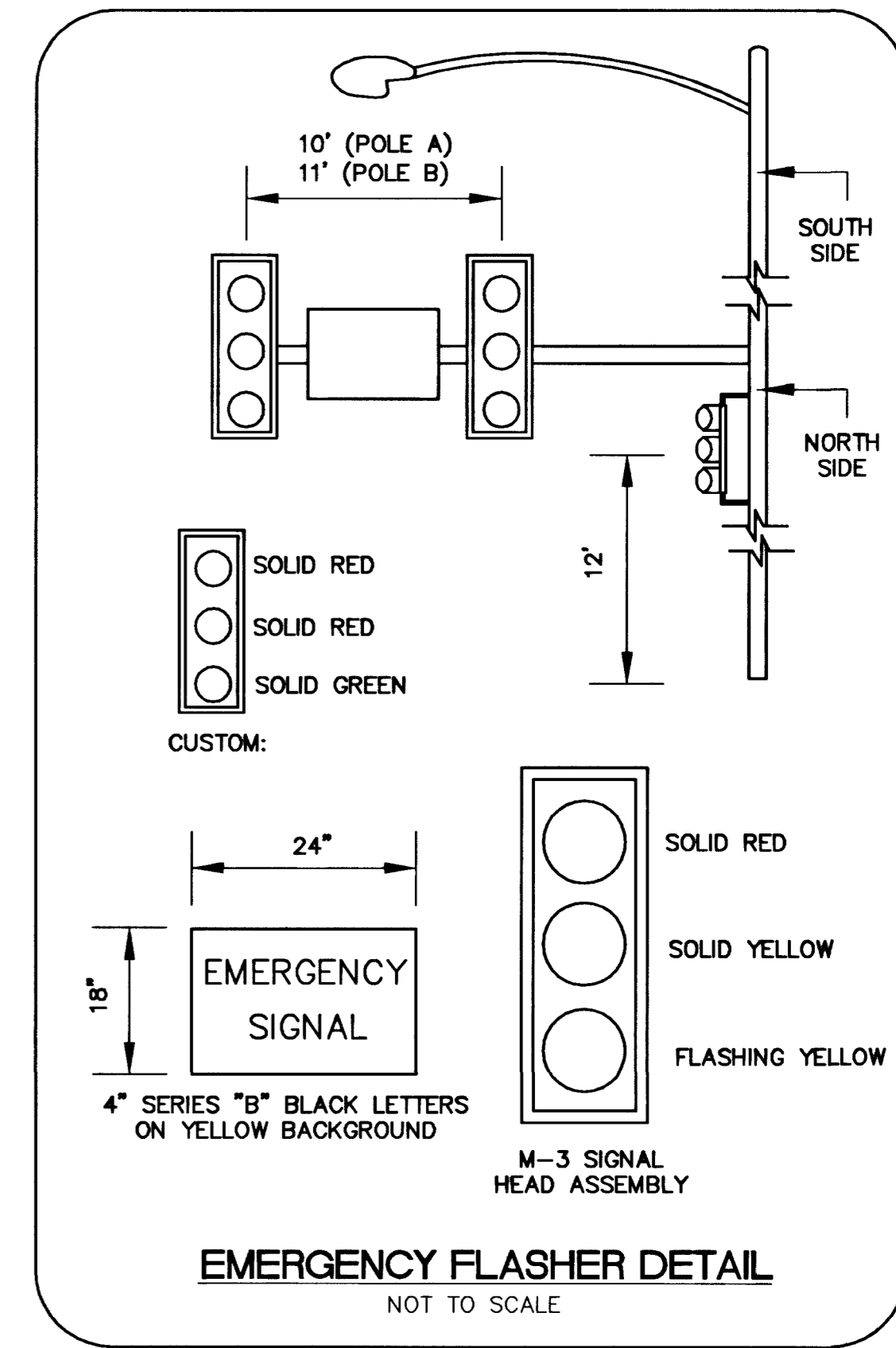
- THE CONTRACTOR SHALL BE RESPONSIBLE FOR DAMAGE TO ALL EXISTING UTILITIES. THE LOCATIONS OF UNDERGROUND UTILITIES AS SHOWN ON THE PLANS ARE APPROXIMATE ONLY. THE CONTRACTOR SHALL NOTIFY ALL UTILITY COMPANIES TO VERIFY IN THE FIELD THE LOCATIONS OF THEIR INSTALLATIONS 72 HOURS PRIOR TO CONSTRUCTION.
 CALL-BEFORE-YOU-OVERHEAD 1-702-593-6111
 CALL-BEFORE-YOU-DIG 1-800-227-2600
 CITY OF LAS VEGAS TRAFFIC 229-6531
 ENGINEERING & FIELD OPERATIONS
 NEVADA POWER 367-5307
- ALL CABLE AND WIRING SHALL BE INSTALLED FROM TERMINAL TO TERMINAL WITHOUT SPLICES.
- TRAFFIC SIGNAL CABLE SHALL BE 10 CONDUCTOR, EXCEPT AS NOTED, #14 AWG CABLE AND SHALL CONFORM TO IMSA SPEC. NO. 20-1.
- ALL PULL BOXES SHALL BE PRECAST REINFORCED CONCRETE AND HAVE CAST IRON COVERS MARKED "TRAFFIC SIGNALS" FOR TRAFFIC SIGNAL WIRING.
- THE ROUTING AND TERMINATION OF CONDUITS AND THE PLACING OF POLES AND CABINETS SHALL BE AS INDICATED ON THE PLANS. ALL CHANGES SHALL BE APPROVED BY THE TRAFFIC ENGINEER.
- ALL SIGNAL POLES SHALL CONFORM TO UNIFORM STANDARD DRAWINGS CLARK COUNTY AREA NO. 404.40 SHEETS 1 THROUGH 6.
- THE FINAL LOCATION OF POLES SHALL BE DETERMINED AT THE TIME OF CONSTRUCTION BY THE TRAFFIC ENGINEER.
- EACH NEW MAST ARM SHALL BE SET PERPENDICULAR TO THE INTERSECTION APPROACH THAT FACES THE TRAFFIC SIGNALS ON THE MAST ARM.
- LUMINAIRE ARM SHALL PROVIDE FOR 35' MOUNTING HEIGHT.
- ALL TRAFFIC SIGNAL HEADS SHALL HAVE 12" DIAMETER GLASS LENSES, AND LOUVERED BACKPLATES. ALL SIGNAL BULBS SHALL BE LED'S PER CITY OF LAS VEGAS LATEST STANDARDS.
- THE SIGNAL HEAD TENON PLACEMENT SHALL BE VERIFIED BY THE CITY OF LAS VEGAS TRAFFIC ENGINEER PRIOR TO MANUFACTURE OF THE MAST ARMS.
- INTERSECTION LIGHTING SHALL CONSIST OF ONE (1) 150 WATT HPS LUMINAIRE.
- CONTRACTOR TO OBTAIN AND INSTALL SIGNAL CONTROL CIRCUIT AND CABINET PROVIDED FROM CITY OF LAS VEGAS TRAFFIC SIGNAL SHOP. CITY OF LAS VEGAS TRAFFIC SIGNAL SHOP TO DETERMINE FINAL LOCATION OF CONTROLLER ENCLOSURE. ENCLOSURE TO BE INSTALLED PRIOR TO INSTALLATION OF CONDUIT AND CONDUCTORS. CITY OF LAS VEGAS WILL MAKE FINAL TERMINATIONS OF CONDUCTORS WITHIN CONTROL CABINET. CONTACT TIM ARMSTRONG AT THE CITY OF LAS VEGAS TRAFFIC SIGNAL SHOP, 299-2101 PRIOR TO COMMENCEMENT OF CONSTRUCTION.
- ALL WORK TO BE COMPLETED IN ACCORDANCE WITH UNIFORM STANDARD DRAWINGS CLARK COUNTY AREA (USDCCA) LATEST EDITION.

SEQUENCE OF OPERATION

WHEN THE SYSTEM IS UNDER NORMAL OPERATION, THE MAST ARM SIGNAL HEAD ASSEMBLIES WILL CONTINUALLY FLASH YELLOW, AND THE CUSTOM SIGNALS WILL BE RED. ACTIVATION FROM ANY OF THE CONTROL STATIONS WILL START A TIMED SEQUENCE THAT WILL CHANGE THE SYSTEM FROM FLASHING YELLOW TO SOLID YELLOW TO SOLID RED FOR THE MAST ARM SIGNAL HEAD ASSEMBLIES. ONE SECOND AFTER THE MAST ARM SIGNAL HEAD ASSEMBLIES HAVE CHANGED TO SOLID RED, THE CUSTOM SIGNALS WILL BE ILLUMINATED. THE SYSTEM WILL REMAIN IN THE EMERGENCY PHASE (SOLID RED FOR CROSS TRAFFIC AND GREEN FOR THE FIRE DEPARTMENT STAFF) FOR A PREDETERMINED TIME BEFORE REVERTING BACK TO NORMAL OPERATION. THE DURATION OF THE EMERGENCY PHASE IS TO BE ADJUSTABLE, AND WILL BE SET BY THE CLV FIRE DEPARTMENT IN COOPERATION WITH THE CLV TRAFFIC ENGINEERING STAFF.

CONSTRUCTION NOTES

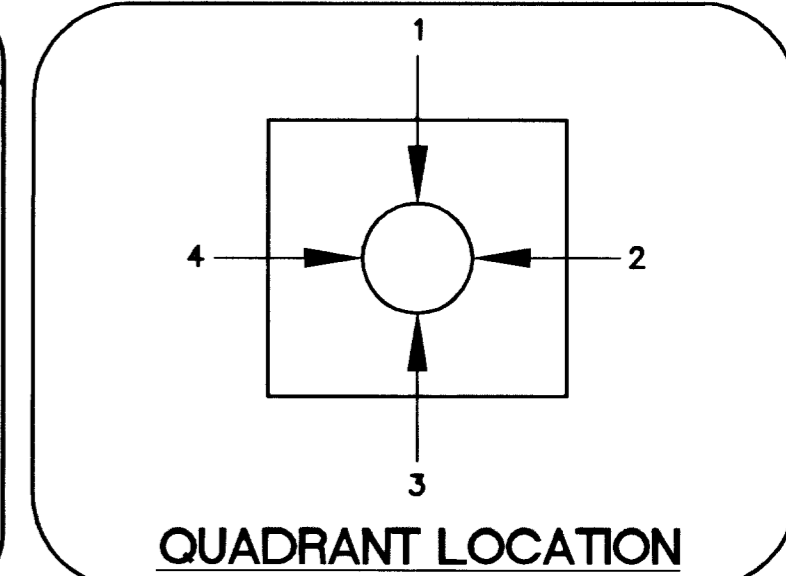
- CONSTRUCT EMERGENCY FLASHER PER SCHEDULES AND DETAILS, THIS SHEET.
- INSTALL NO. 5 PULLBOX PER USD NO. 326 (SEE SHEET C-15).
- INSTALL SIGNAL CONTROLLER CABINET (SEE TRAFFIC SIGNAL NOTE 13).
- MOUNT SIGN PER USD NO. 404.418 (SEE SHEET C-15).
- MOUNT M-3 SIGNAL HEAD ASSEMBLY PER USD NO. 404.1023. (SEE SHEET C-15)
- MOUNT CUSTOM SIGNAL HEAD PER USD NO. 404.1027 (B-10) (SEE SHEET C-15).
- SEE ELECTRICAL PLANS, SHEET E2.1 FOR EXACT LOCATION OF TRAFFIC CONTROL BUTTON.



RECORD DRAWINGS
 AS-BUILT INFORMATION WAS PROVIDED BY THE CONTRACTOR. AZTEC ASSUMES NO LIABILITY FOR ACCURACY OF IT'S CONTENTS.

PRE-EMPTION SYSTEM

INSTALL EMERGENCY VEHICLE PRE-EMPTION SYSTEM FOR EAST WEST TRAVEL ON WASHINGTON AVENUE AT THE INTERSECTION OF WASHINGTON AVENUE AND BUFFALO DRIVE. INSTALL PER CITY OF LAS VEGAS SPECIFICATIONS (REGIONAL TRANSPORTATION COMMISSION OFFSITE CONSTRUCTION ARTICLE 623). LOCATE PRE-EMPT DEVICE ON NORTHWEST CORNER TRAFFIC POLE AT LAST SIGNAL HEAD AT THE END OF SIGNAL MAST ARM. CONNECT DEVICE TO TRAFFIC SIGNAL CABINET AT WASHINGTON AVENUE AND BUFFALO DRIVE INTERSECTION.



BENCHMARK

CITY OF LAS VEGAS STATION: 0LV00 28SEE6, BEING A RIVET & PLATE, NEVADA POWER VAULT #TT-639, 7651 SUMMERLIN PARKWAY ELEV. 2489.56 FEET NAVD88

BASIS OF BEARING

S 88°57'35" W BEING THE NORTH LINE OF THE SOUTHEAST QUARTER (SE 1/4) OF SECTION 28, TOWNSHIP 20 SOUTH, RANGE 60 EAST, M.D.M., CITY OF LAS VEGAS, NEVADA, AS PER RECORD OF SURVEY FILE 74, PAGE 28 OF CLARK COUNTY OFFICIAL RECORDS. SAID LINE ALSO BEING THE CENTERLINE OF WASHINGTON AVENUE.

Call before you Dig.
 1-800-227-2600
 UNDERGROUND SERVICE (USA)

AVOID HITTING OVERHEAD POWER LINES. IT'S COSTLY!
 CALL BEFORE YOU DO OVERHEAD
 1-702-593-6111

CONDUIT AND WIRE SCHEDULE

WIRE	FROM	TO	VIA CONDUIT											
			1	2	3	4	5	6	7	8	9			
(2) #4 THW & (1) #8 GRND (GREEN)	STREET POLE	STREET POLE	X											
(2) #10 THW & (1) #10 GRND (GREEN)	PANEL C	CONTROLLER	X											
10 CONDUCTOR CABLE (1) #8 GRND (GREEN)	CONTROLLER	POLE A		X	X									
10 CONDUCTOR CABLE (1) #8 GRND (GREEN)	CONTROLLER	POLE B		X		X								
(2) #14 (1) #12 GRND	CONTROLLER	CONTROL BUTTON 4						X						
(2) #14 (1) #12 GRND	CONTROLLER	CONTROL BUTTON 3								X				
(2) #14 (1) #12 GRND	CONTROLLER	CONTROL BUTTON 2									X			
(2) #14 (1) #12 GRND	CONTROLLER	CONTROL BUTTON 1										X		
CONDUIT SIZE			2"	2"	(2)2"	3"	3"	3/4"	3/4"	3/4"	3/4"	3/4"	3/4"	3/4"

POLE SCHEDULE

POLE	LOCATION	FOUNDATION	POLE TYPE	SIGNAL ARM		LUMINAIRE		VEHICLE SIGNAL HEAD ASSEMBLIES		PEDESTRIAN SIGNAL ASSEMBLIES/PUSH BUTTONS	REMARKS
				QUAD	LENGTH	QUAD	ARM	TYPE	TYPE		
(A)	22+82.65 51.60 RT	TYPE "H"	XX	1	40'	1	15'	150W 240V	(2) M-3 (1) CUSTOM (SEE DETAIL)	M-ARM 3	N/A
(B)	23+18.27 38.50 LT	TYPE "H"	XX-20'	3	30'	N/A	N/A	N/A	(2) M-3 (1) CUSTOM (SEE DETAIL)	M-ARM 3	N/A

NOTE: ALL CONDUIT RUNS ARE SHOWN SCHEMATICALLY FOR CLARITY. CONTRACTOR SHALL DETERMINE THE ACTUAL LOCATION OF ALL CONDUITS AND PULLBOXES IN THE FIELD WHILE MAINTAINING CITY OF LAS VEGAS STANDARDS.

PROJ NO: AZ01002
 DESIGN: RAC/LG
 DATE: 04/22/03
 SCALE: AS SHOWN
 FILE: FS44_10

PROFESSIONAL ENGINEER - STATE OF NEVADA
 ALLEN PAVEL
 No. 9079
 STAMP DATE: 4-22-03

AZTEC ENGINEERING
 3320 N. Buffalo Dr. # 100, Las Vegas, NV 89129
 Tel (702) 396-3426 Fax (702) 396-3758
 Email: aztec@azteceng.com

CITY OF LAS VEGAS
 FIRE STATION NO. 44
 EMERGENCY SIGNAL FLASHER

SHEET
C-10
 10 OF 20 SHEETS
 CLV DRAWING NO.
630.97