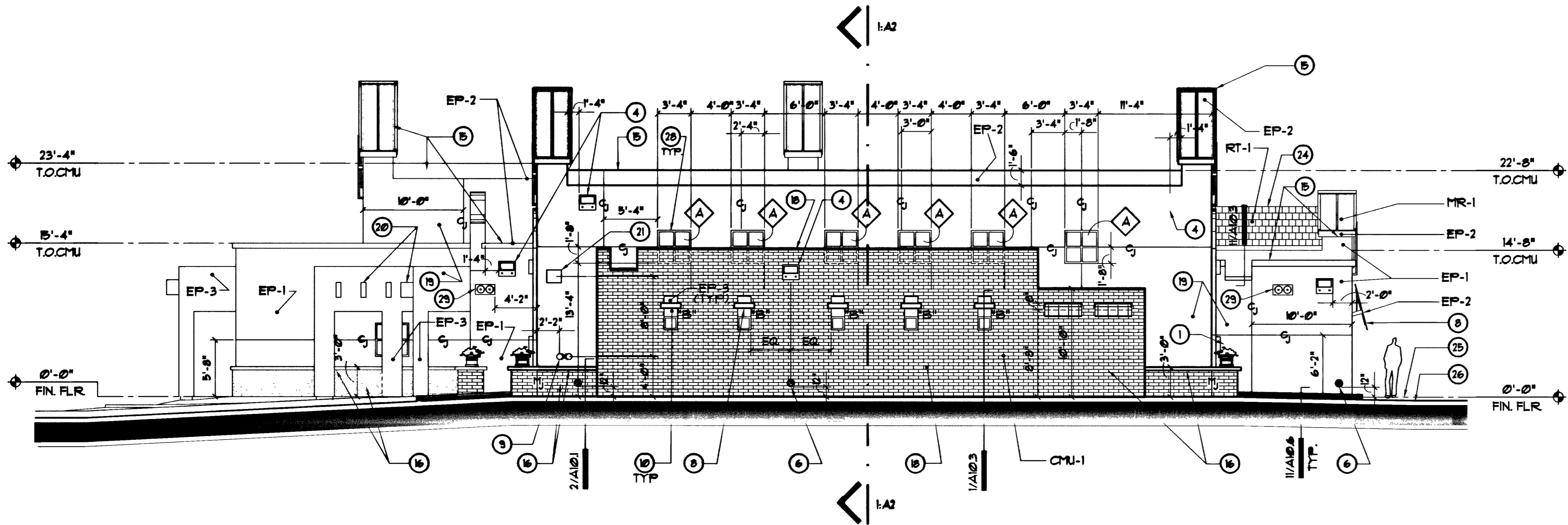
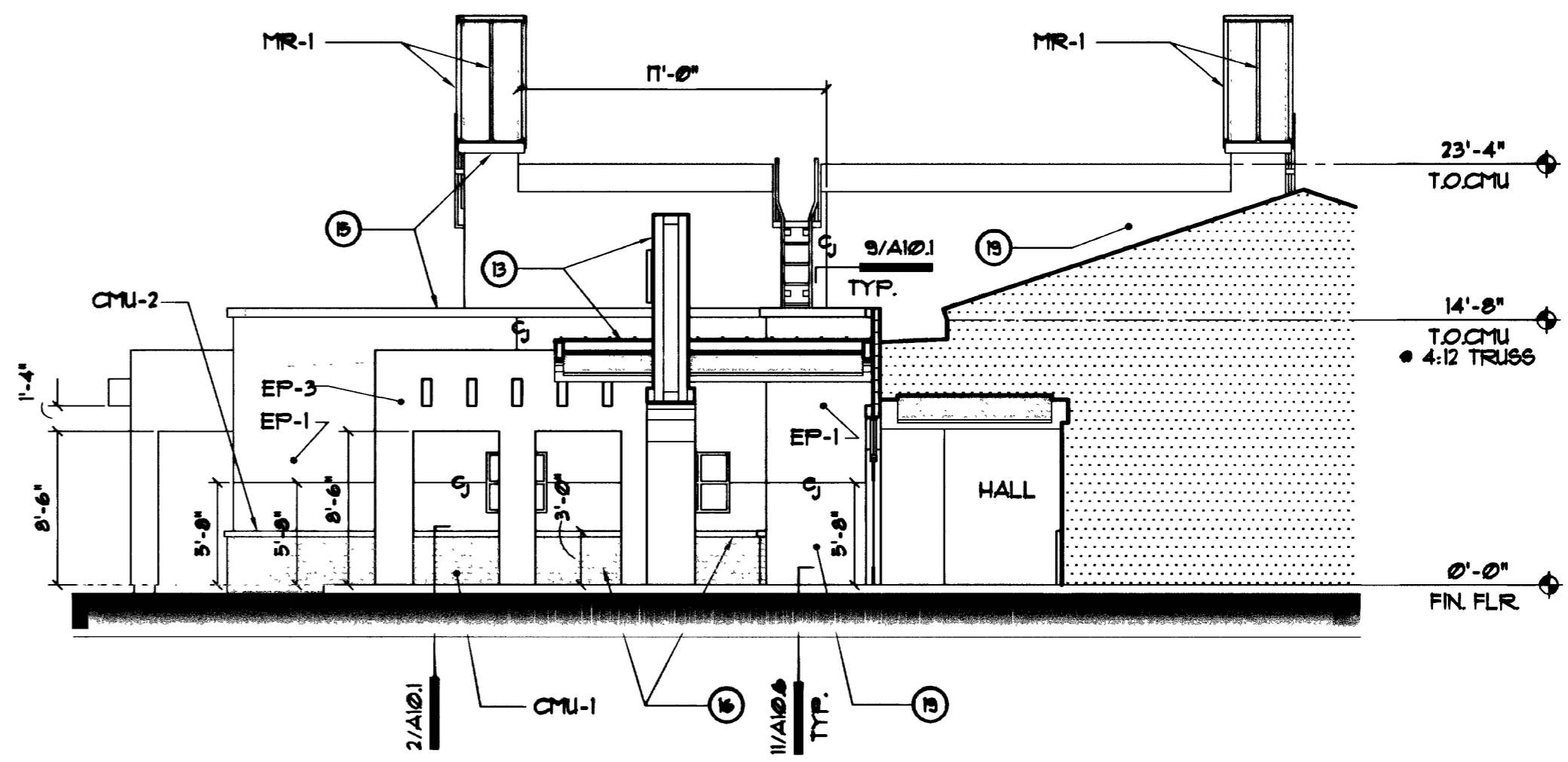




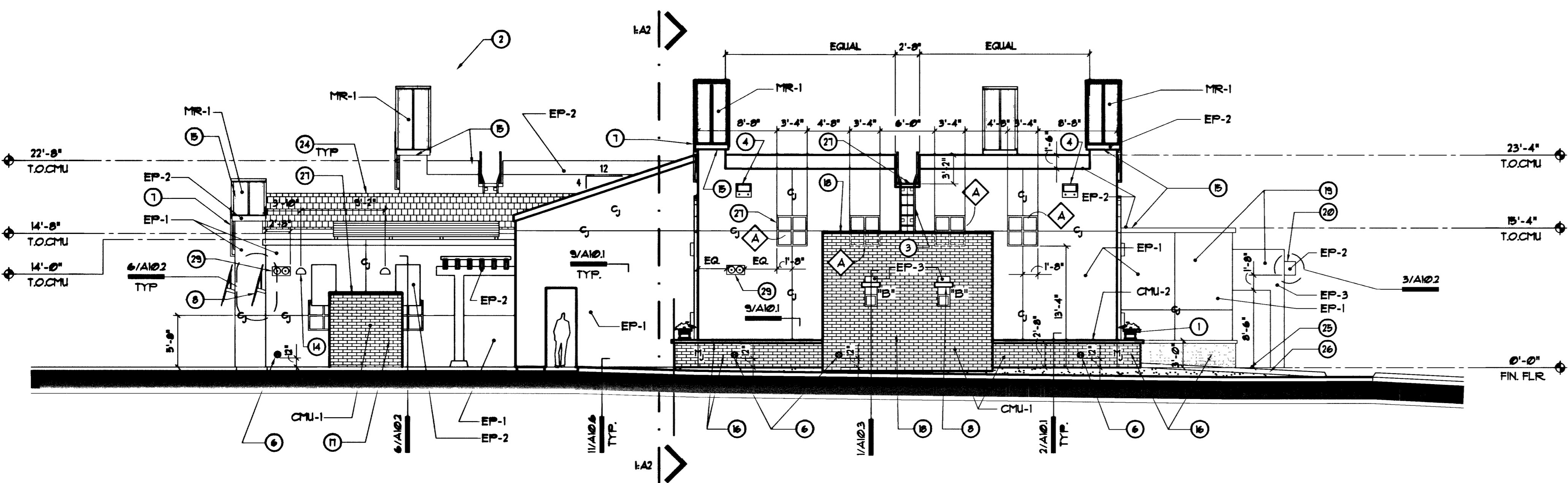
REVISIONS
 (3) CMU Color Change 10/23/01
 CONSULTANT



1 West Elevation
 Scale: 1/8"=1'-0"



3 Entry Court - West Elevation
 Scale: 1/8"=1'-0"



2 East Elevation
 Scale: 1/8"=1'-0"

Keynotes

- 1 PLANTER BOX, SEE DETAIL 1/A101.
- 2 NOT USED.
- 3 FIXED ALUMINUM EXTERIOR WALL LADDER, BY "ALACO", SERIES 5660, USE STANDARD ARRANGEMENT FOR MOUNTING BRACKETS AS PER MFR. SEE DTL. 11/A103. PROVIDE CLEAR ANODIZED ALUMINUM FINISH.
- 4 OVERFLOW ROOF SCUPPER, SEE DTL. 4/A103 & SHT A3 FOR EXACT LOCATION.
- 5 NOT USED.
- 6 ROOF DRAIN OUTLET, PROVIDE DOWNSPOUT NOZZLE PER PLUMBING DUGS.
- 7 PAINTED TUBE STEEL CROSSBAR & CONCRETE ROSSETTE, SEE DETAIL 11/A102.
- 8 WINDOW CANOPY - SEE DETAILS 8 ON SHEET A102 & A103 AS INDICATED FOR DIFFERING WINDOW CANOPY CONDITIONS, SEE LETTER "B" LOCATED NEXT TO CANOPIES. REFER TO SHEET A103 FOR DETAIL OF WINDOW CANOPY "B".
- 9 FIRE DEPARTMENT CONNECTION, SEE PLUMBING DRAWINGS AND FIRE PROTECTION DUGS.
- 10 STUCCO NICHE AT CMU WALL, SEE DETAIL 1/A103 & 12/A102.
- 11 FLAGPOLE, SEE CIVIL PLANS FOR DETAIL AND SPEC'S FOR DESCRIPTION.
- 12 NOT USED.
- 13 ENTRY WALL & ENTRANCE CANOPY.
- 14 EXTERIOR LIGHT, SEE SPECIFICATIONS FOR DIFFERENT LIGHTS & LOCATIONS.

Keynotes

- 15 STUCCO PARAPET TRIM BANDING - PAINT PER CALLOUTS & FINISH SCHEDULE, SEE DETAILS 6 & 9/A103.
- 16 EXPOSED CMU WAINSCOT W/ EXPOSED CMU SILLBLOCK (CAP), SEE DETAIL 2/A101.
- 17 8'-2" HIGH - 8"x4"x16" EXPOSED CMU WALL AT PATIO W/ 8"x2"x16" EXPOSED CAP.
- 18 EXPOSED CMU WALL - W/ 8" X 2"x16" EXPOSED CAP, SEE FINISH SCHEDULE & SPECIFICATIONS.
- 19 LIGHT SAND STUCCO FINISH - SEE EXTERIOR FINISH SCHEDULE THIS SHEET & SPEC'S.
- 20 MTL FRAMED TRELLIS MEMBERS, W/ STUCCO FINISH, PAINTED, SEE FINISH SCHED. & DTL. 3/A102.
- 21 HORN & STROBE, SEE SHEET EP-01 FOR ALL INFORMATION.
- 22 NOT USED.
- 23 NOT USED.
- 24 CONCRETE ROOF TILES, SEE FINISH SCHEDULE AND SPECIFICATIONS & ROOF PLAN.
- 25 LINE OF FINISH FLOOR, TYPICAL.
- 26 APPROXIMATE LINE OF FINISH GRADE, TYPICAL.
- 27 10' X 4' X 16" EXPOSED CMU SILLBLOCK (CMU-1), SEE SPEC'S & DETAIL 11/A103.
- 28 CLERESTORY WINDOW IN APPARATUS RM. WALL BEHIND PARAPET, SEE WINDOW SCHEDULE & DETAIL 1/A91 (TYP. OF 10 WINDOWS TOTAL).
- 29 SPEAKERS, SEE SHEET E3 (IN ELECTRICAL DUGS) FOR ALL INFORMATION. MOUNT CENTER OF SPEAKERS AT 10'-0" AFF.

General Notes:

1. ALL EXTERIOR METAL TO BE GALVANIZED AND PAINTED PER FINISH SCHEDULE.
2. SEE FINISH SCHEDULE ON THIS SHEET FOR COLORS OF ALL MATERIALS KEYNOTED ON ELEVATIONS.
3. ANY PLACE WHERE A "C₁" IS SHOWN INDICATES A CONTROL JOINT RUNNING THE FACE OF THE WALL.
4. ANY PLACE WHERE A "M₁" IS SHOWN INDICATES A CONTROL JOINT RUNNING THE FACE OF THE EXPOSED CMU VENEER ONLY, (THIS IS NOT THE SAME AS THE CMU EXPANSION JOINT AS SHOWN IN THE STRUCTURAL DRAWINGS). SEE DETAIL 3/A103 FOR EXACT CONFIGURATION OF VENEER JOINT.

Exterior Finish Schedule

ABBREV.	MATERIAL / LOCATION	FINISH	COLOR & MFR.
EP-1	MAIN EXTERIOR COLOR ON STUCCO WALLS.	LIGHT SAND STUCCO FINISH, PAINTED.	"ANTISH LINEN", #563 MFR: [C] (OR APPROVED EQ.)
EP-2	EXTERIOR ACCENT COLOR ON PARAPET TRIM & STUCCO FINISHED TRELLIS BEAMS.	LIGHT SAND STUCCO FINISH, PAINTED.	"TAUPEWOOD", #512 MFR: [C] (OR APPROVED EQ.)
EP-3	EXTERIOR DOORS & FRAMES / TRELLIS HEADER/COLUMNS.	PAINT (DOORS) / LIGHT SAND STUCCO FINISH (TRELLIS).	"WHITE WHISPER", #205 MFR: [C] (OR APPROVED EQ.)
CMU-1	EXPOSED CMU (8"x4"x16") (4"x4"x16") CMU WAINSCOT.	EXPOSED CMU WALLS.	"AUTUMN" BY MFR: "TRENDSSTONE" OR APPROVED EQ. SEE SPECIFICATIONS.
CMU-2	(4"x4"x16") CMU SILLBLOCK (8"x4"x16") CMU SILLBLOCK.	EXPOSED CMU SILLBLOCK.	"AUTUMN" BY MFR: "TRENDSSTONE" OR APPROVED EQ. SEE SPECIFICATIONS.
CMU-3	(8"x8"x16") COLORED CMU	CMU @ TRASH & GENERATOR ENCLOSURES & SITE WALLS.	DAVIS COLOR "C-114 "STROH RED" MFR: "CINDERLITE" OR APPROVED EQ. SEE SPECIFICATIONS.
EP-2	ROSETTE CROSSBARS, T.S. PATIO TRELLIS	GALV. EXPOSED METAL, PAINTED.	"TAUPEWOOD", #512 MFR: [C] (OR APPROVED EQ.)
EP-2	ALL MTL. CANOPIES.		
ALUM-1	BLDG. ADDRESS LETTERS.	BRUSHED ALUMINUM	MFR. GEMINI, FONT: "HELVETICA" COLOR: CLEAR SATIN FINISH.
RT-1	ROOF TILE	CONCRETE TILE - (FLAT PROFILE)	"LIFETILE" OR APPROVED EQ. "ANTIQUE RED"
MR-1	8"ND'G BEAM METAL ROOFG	FACTORY FINISH.	"TBSA BLDG. PRODUCTS, INC.", STYLE: "SELECT SEAM", COLOR: "OLD ZINC GRAY"
MR-2	8"ND'G BEAM METAL ROOFG (PROVIDE @ ENTRANCE CANOPY ONLY)	FACTORY FINISH.	"TBSA BLDG. PRODUCTS, INC.", STYLE: "SELECT SEAM", COLOR: "REAL COPPER"

RECORD DRAWING

DEPARTMENT OF PUBLIC WORKS

CITY OF LAS VEGAS, NEVADA
 FIRE STATION #44
 Exterior Elevations

OWNER: CITY OF LAS VEGAS
 DEPARTMENT OF PUBLIC WORKS
 ARCHITECTURAL SERVICES

400 EAST STEWART AVENUE
 LAS VEGAS, NEVADA 89101
 PHONE: (702) 229-6535
 FAX: (702) 382-3232
 TDD: (702) 386-9108

DRAWN: EP6
 FILE: 1444-AA1
 DATE: 10/29/01
 SCALE: 1/8"=1'-0"
 BID NO: 021534102
 CIV. DWG NO: 63097
 SHEET NO: 35 OF 106
 SHEET: A4.1

57257