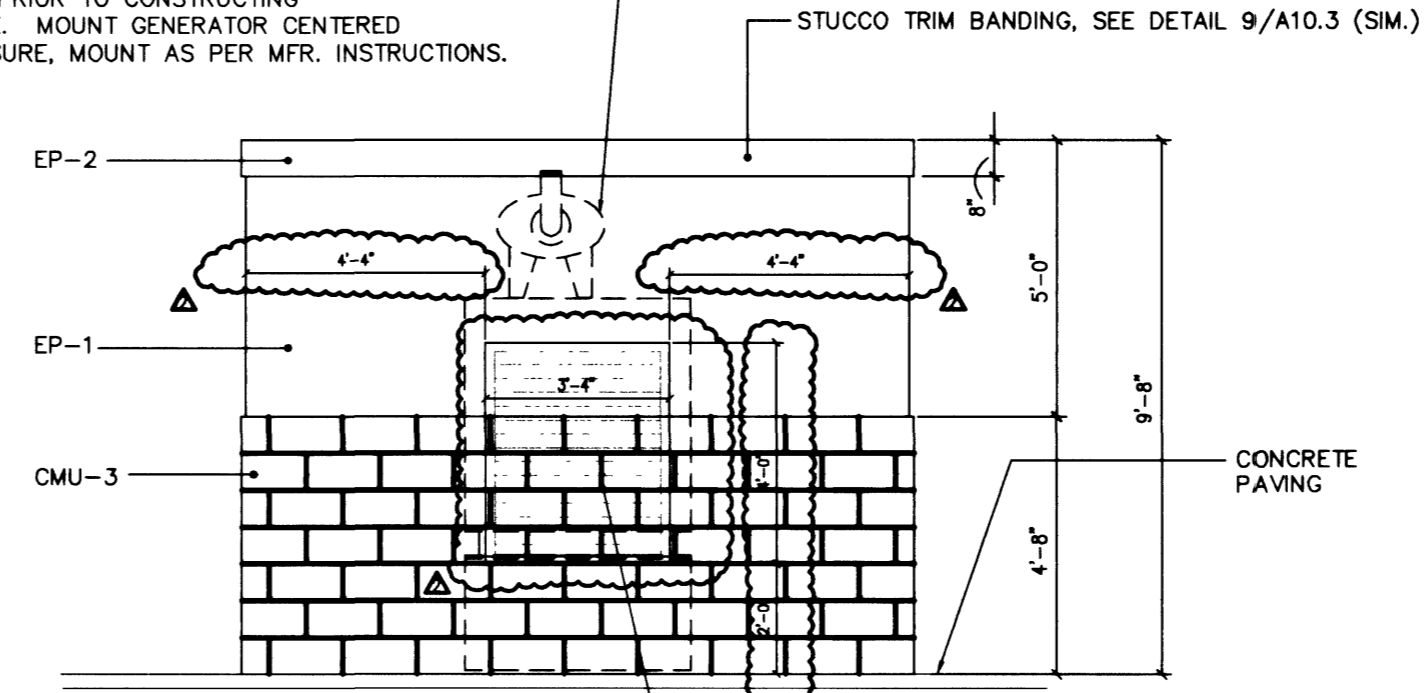


GENERATOR & TANK - SEE MECHANICAL & ELECT. DWGS.
 GENERATOR SIZE MAY VARY DEPENDING ON MFR.
 (F.V. SIZE PRIOR TO CONSTRUCTING
 ENCLOSURE. MOUNT GENERATOR CENTERED
 ON ENCLOSURE. MOUNT AS PER MFR. INSTRUCTIONS.



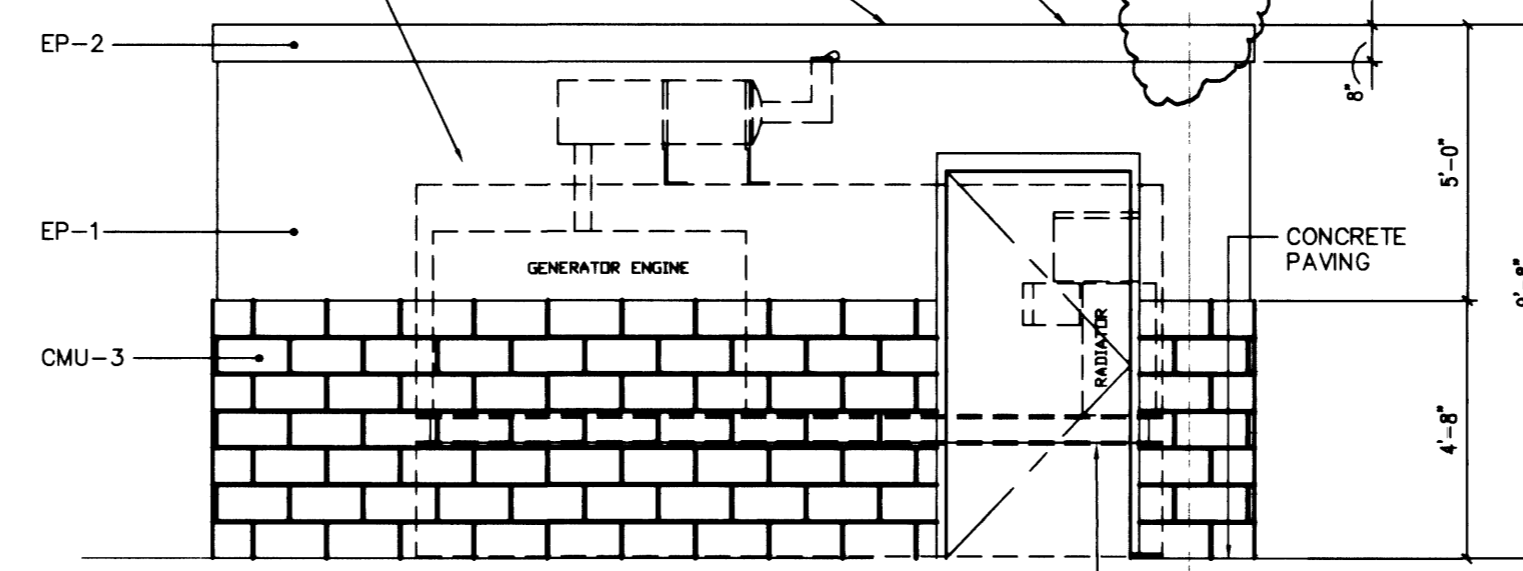
WALL LOUVER BY "C.S. LOUVERS, INC." (PHONE # 702-269-7444), MODEL #1302, OR APPROVED EQ. LOUVER SHALL BE 3'-4" W X 4'-0" HIGH.

NOTE: CONTRACTOR SHALL VERIFY CLEARANCE REQUIREMENTS OF GENERATOR MFR. AND CODES & SHALL MAKE ADJUSTMENTS TO ENLARGE GENERATOR ENCLOSURE & ADJUST THE SURROUNDING AREA IMPROVEMENTS IF REQUIRED TO MEET THE REQUIRED CLEARANCE.

8B Generator Enclosure - East Elevation
 Scale: N.T.S. XXXX-XX AS2-11

SLOPE STUCCO TOP OF WALL @ 1:48 TOWARDS EXTERIOR SIDE OF ENCLOSURE FOR POSITIVE DRAINAGE.

STUCCO TRIM BANDING, SEE DETAIL 9/A10.3 (SIM.)



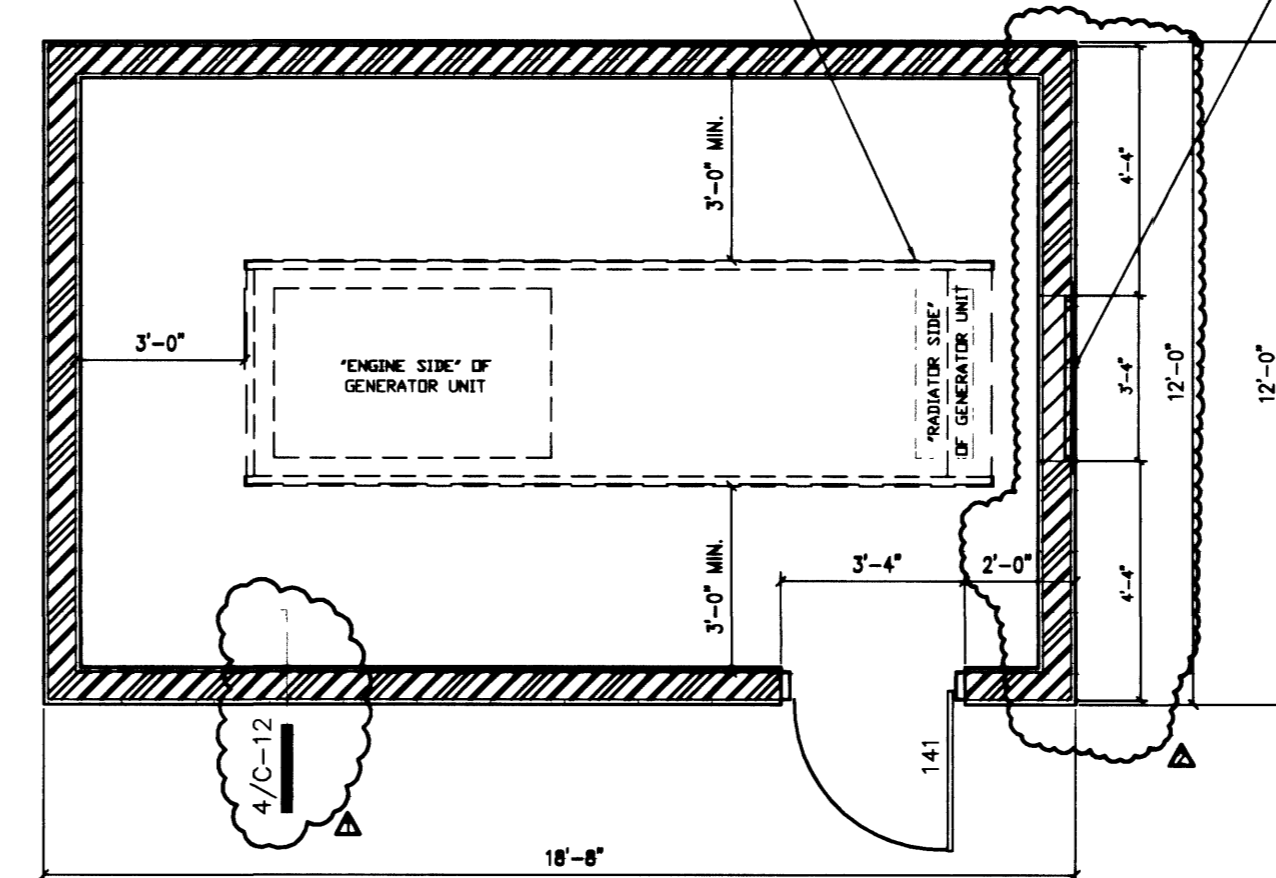
GENERATOR & TANK - SEE MECHANICAL & ELECT. DWGS.
 GENERATOR SIZE MAY VARY DEPENDING ON MFR.
 (F.V. SIZE PRIOR TO CONSTRUCTING
 ENCLOSURE. MOUNT GENERATOR CENTERED
 ON ENCLOSURE. MOUNT AS PER MFR. INSTRUCTIONS.

NOTE: MAINTAIN ALL REQ'D CLEARANCES AROUND GENERATOR AS PER CURRENT EDITION OF NATIONAL ELECT. CODE. (VERIFY ALL CLEARANCES & SIZES PRIOR TO CONSTRUCTION OF CMU ENCLOSURE.)

8A Generator Enclosure - South Elevation
 Scale: N.T.S. XXXX-XX AS2-11

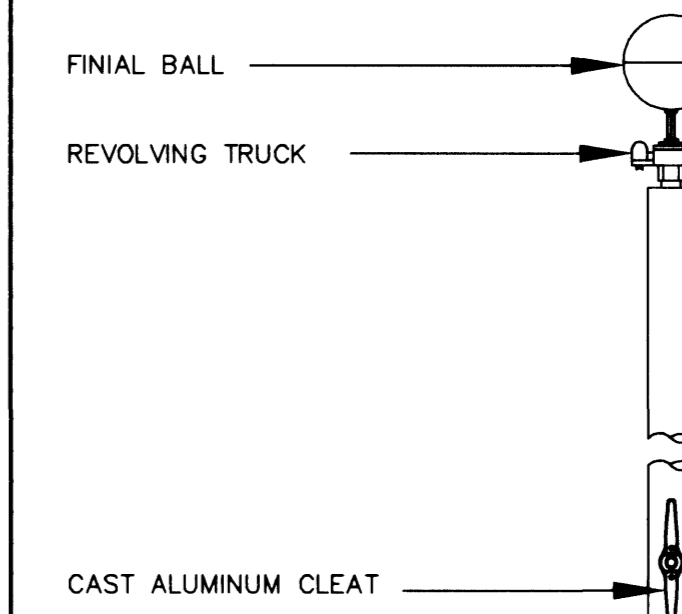
GENERATOR & TANK - SEE MECHANICAL & ELECT. DWGS.
 GENERATOR SIZE MAY VARY DEPENDING ON MFR.
 (F.V. SIZE PRIOR TO CONSTRUCTING
 ENCLOSURE. MOUNT GENERATOR CENTERED
 ON ENCLOSURE. MOUNT AS PER MFR. INSTRUCTIONS.

WALL LOUVER, SEE GENERATOR ENCLOSURE.



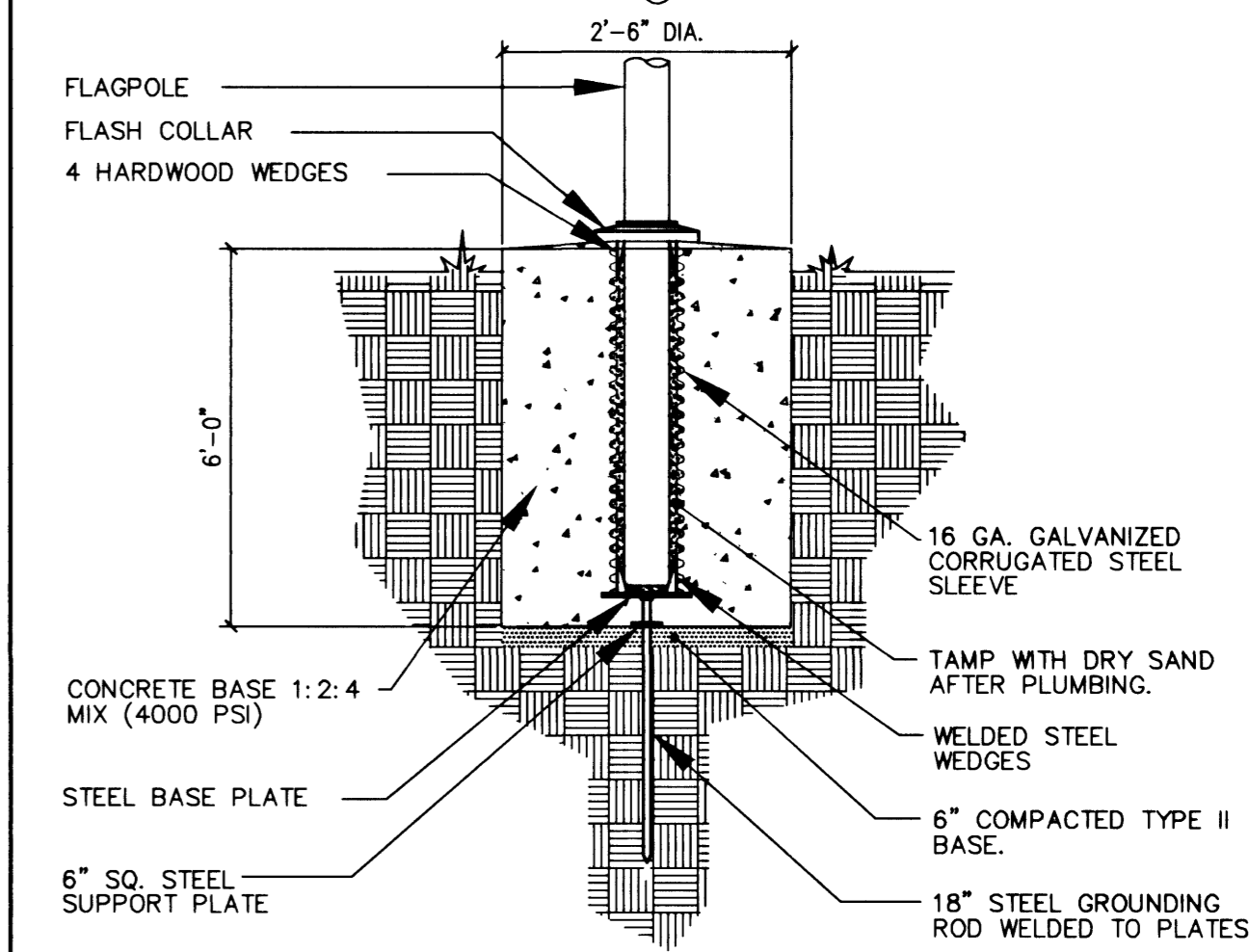
NORTH ▲

8 Generator Enclosure - Plan View
 Scale: N.T.S. XXXX-XX AS2-11

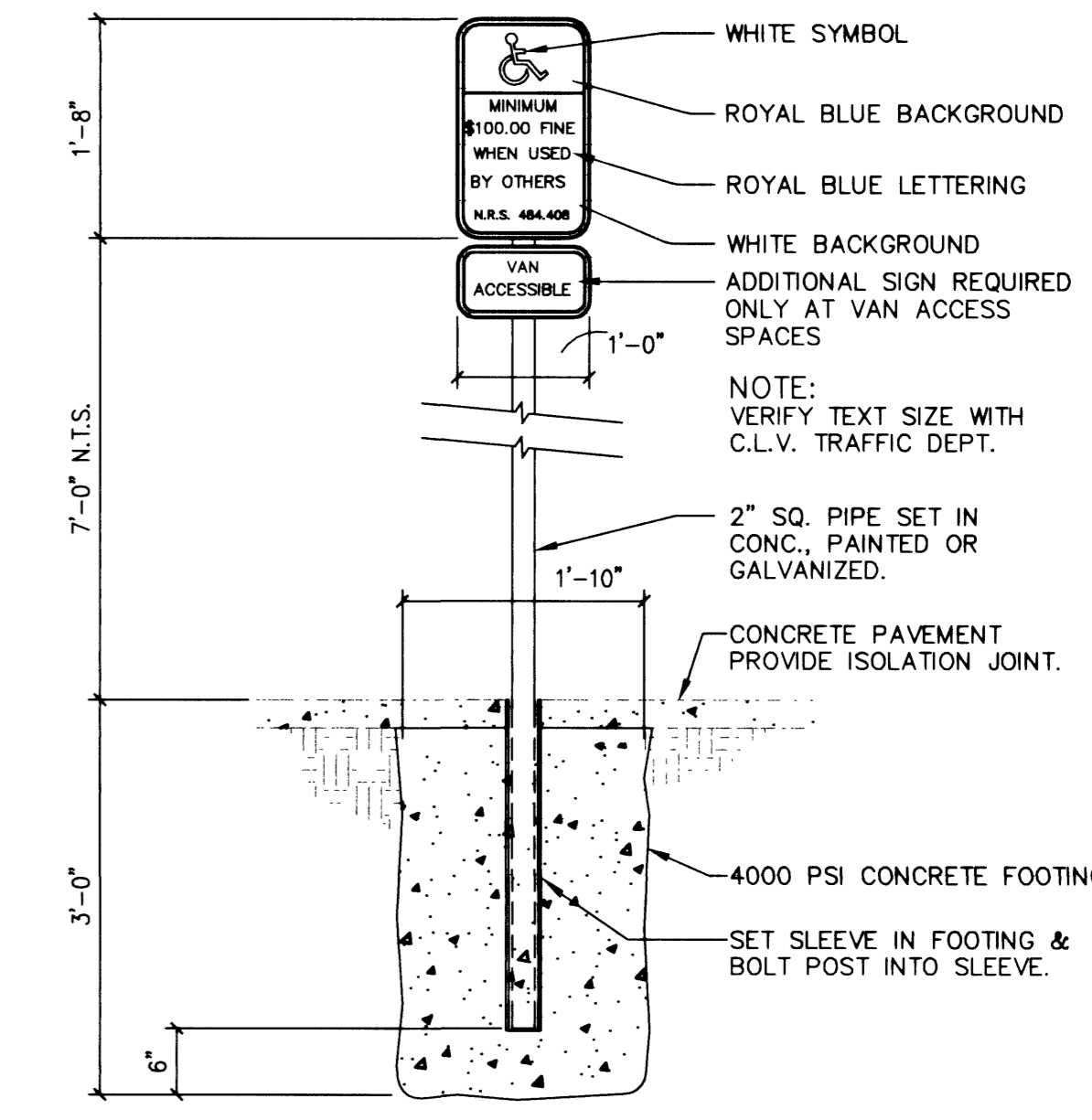


FLAGPOLE SPECIFICATION:
 FLAGPOLE SHALL BE "CONCORD INDUSTRIES, INC." (OR APPROVED EQUAL) CONCEALED HALYARD AND CONE-TAPERED ALUMINUM FLAGPOLE, 35' HIGH (EXPOSED HEIGHT). FINISH SHALL BE "CLEAR ANODIZED". PROVIDE FLASH COLLAR & BASE (MODEL NO. FC-16.).

NOTE: FLAGPOLE TO HAVE INTERNAL HOIST AND LOCKING MECHANISM.



7 Flagpole Base Detail
 Scale: N.T.S. 10350-01 AS2-10



6 Handicap Accessibility Sign
 Scale: 3/4" = 1'-0" 10426-01 AS2-09

PROJ NO:	AZ01002
DESIGN:	RAC/LG
DATE:	09/26/01
SCALE:	AS SHOWN
FILE:	FS44-13

AZTEC ENGINEERING
 3320 N. Buffalo Dr. # 106, Las Vegas, NV 89129
 Tel: (702) 396-3426 Fax: (702) 396-3758
 Email: aztec@azteceng.com

CITY OF LAS VEGAS
 FIRE STATION NO. 44
 CONSTRUCTION DETAILS III

SHEET
C-13
 13 OF 20 SHEETS
 CLV DRAWING NO.
630.97