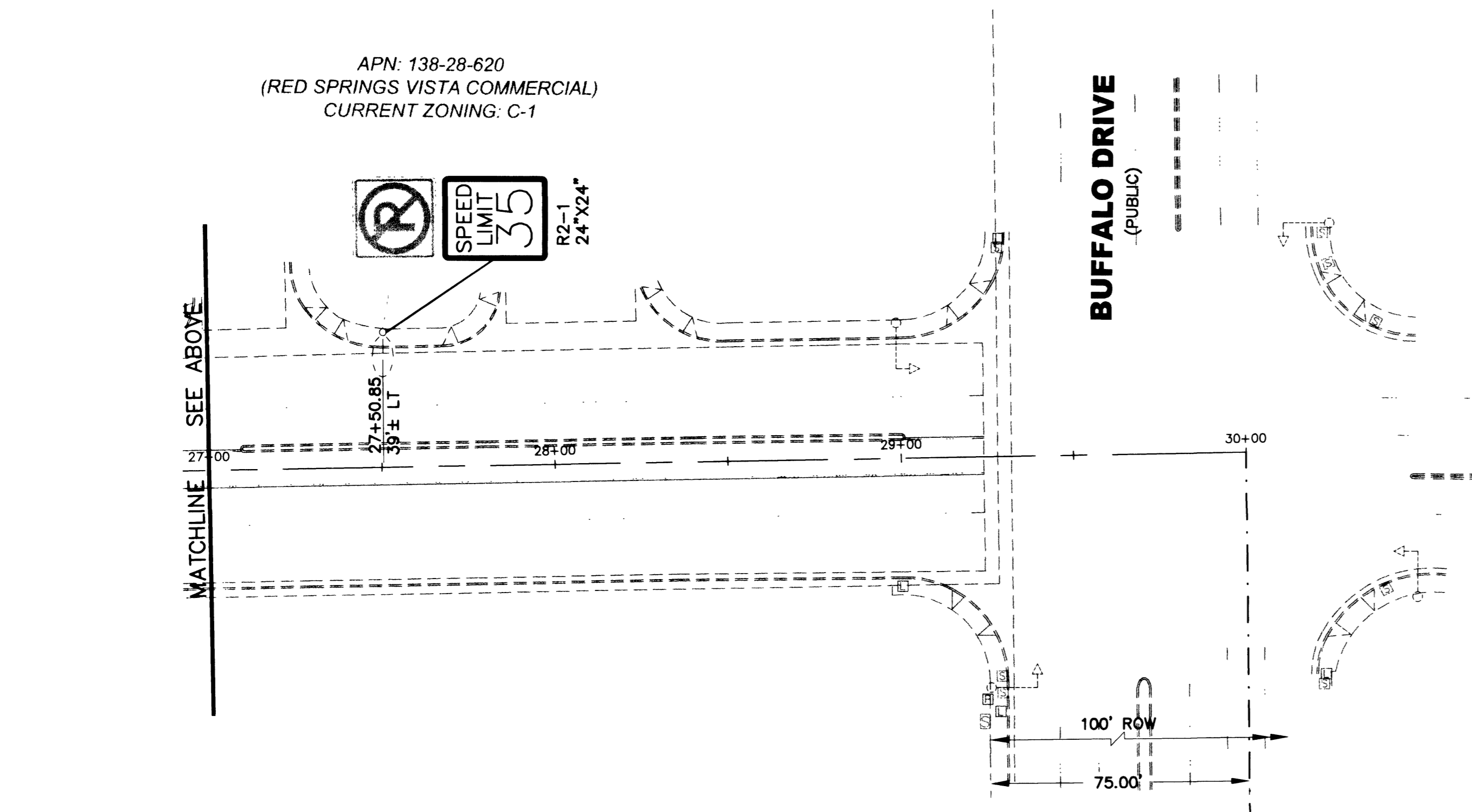
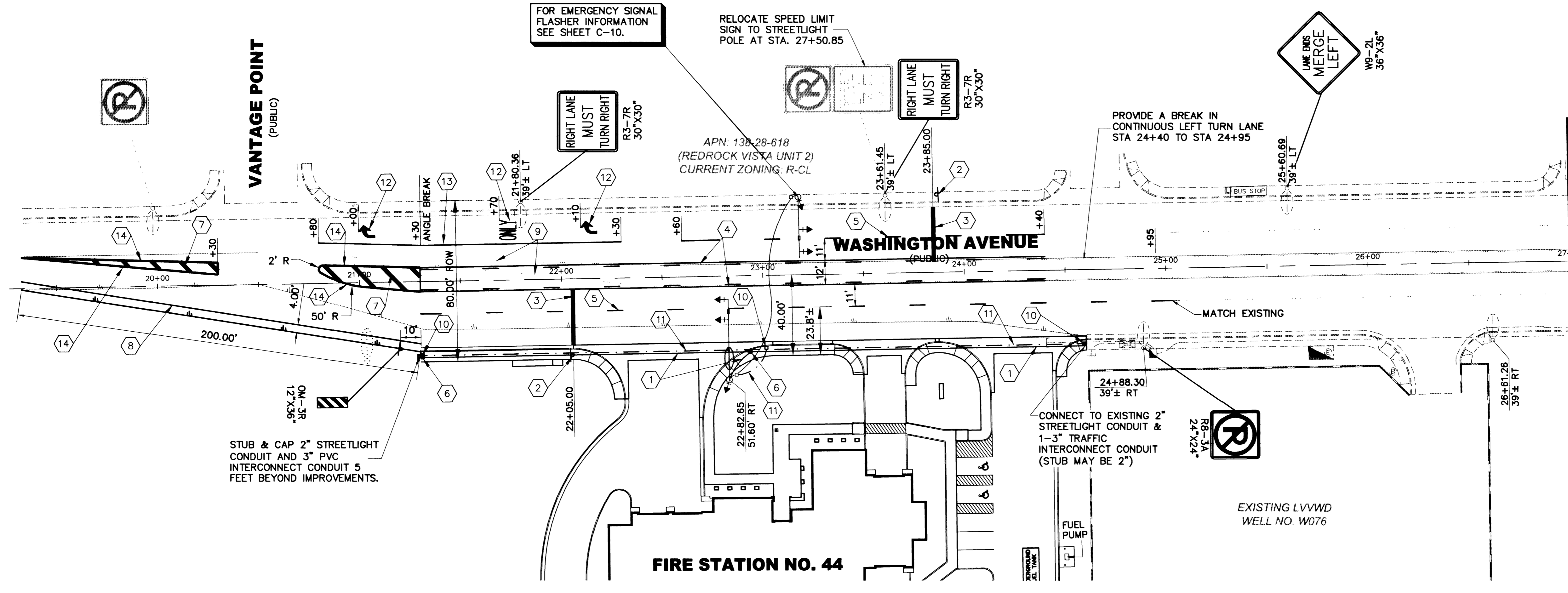


SCALE: 1" = 30'
30 0 30 60
SCALE FEET



- CONSTRUCTION NOTES**
- 1) INSTALL 2" STREETLIGHT CONDUIT WITH 2-#4, 1-#8 GRND THW.
 - 2) INSTALL "STOP HERE ON RED" SIGN (R10-6 24"x36").
 - 3) INSTALL 24" STOP BAR.
 - 4) INSTALL TYPE 2 CENTERLINE PER USD NO. 244 (SEE SHEET C-14).
 - 5) INSTALL TYPE 4 LANE LINE PER USD NO. 244A (SEE SHEET C-14).
 - 6) INSTALL NO. 5 PRECAST REINFORCED CONCRETE PULL BOX PER USD NO. 326 (SEE SHEET C-15).
 - 7) INSTALL 24" SOLID YELLOW 45° DIAGONAL LINE 10' O.C. (TAPE)
 - 8) INSTALL 6" SOLID WHITE EDGELINE.
 - 9) REMOVE EXISTING STRIPING.
 - 10) INSTALL NO. 7 PRECAST REINFORCED CONCRETE PULL BOX PER USD NO. 326 (SEE SHEET C-15).
 - 11) INSTALL 1-3" PVC CONDUIT WITH 1-#8 WIRE FOR FUTURE TRAFFIC SIGNAL INTERCONNECT. CONDUITS TO HAVE 45° RIGID BENDS (PVC OVER STEEL) INTO NO. 7 PULLBOXES.
 - 12) INSTALL PAVEMENT MARKINGS.
 - 13) INSTALL 8" STORAGE LANE LINE (TAPE).
 - 14) INSTALL TYPE 1 CENTERLINE PER USD NO. 244 (TAPE) (SEE SHEET C-14).

BENCHMARK

CITY OF LAS VEGAS STATION: 0LV00 28SEE6,
BEING A RIVET & PLATE, NEVADA POWER VAULT
#TT-639, 7651 SUMMERLIN PARKWAY
ELEV. 2489.56 FEET NAVD88

BASIS OF BEARING

S 88°57'35" W BEING THE NORTH LINE OF THE
SOUTHEAST QUARTER (SE 1/4) OF SECTION 28,
TOWNSHIP 20 SOUTH, RANGE 60 EAST, M.D.M.,
CITY OF LAS VEGAS, NEVADA., AS PER RECORD
OF SURVEY FILE 74, PAGE 28 OF CLARK COUNTY
OFFICIAL RECORDS. SAID LINE ALSO BEING THE
CENTERLINE OF WASHINGTON AVENUE.

Avoid cutting underground utility lines. It's costly.

Call before you Dig.

1-800-227-2600
UNDERGROUND SERVICE (USA)

Avoid hitting overhead power lines. It's costly.

CALL BEFORE YOU DIG OVERHEAD

1-702-593-6111

PROJ NO:	AZ01002
DESIGN:	RAC/LG
DATE:	09/26/01
SCALE:	AS SHOWN
FILE:	FS44_09

PROFESSIONAL ENGINEER SEAL
AZTEC ENGINEERING
3320 N. Buffalo Dr. # 106, Las Vegas, NV 89129
Tel (702) 396-3426 Fax (702) 396-3758
Email: aztec@azteceng.com

CITY OF LAS VEGAS
FIRE STATION NO. 44
TRAFFIC SIGNAGE, STRIPING, & STREETLIGHTING
WASHINGTON AVENUE

SHEET
C-9
9 OF 20 SHEETS
CLV DRAWING NO.
630.97

F:\2001\09\04_09.dwg, 09/25/01 01:45:38 PM, Lape-Goda