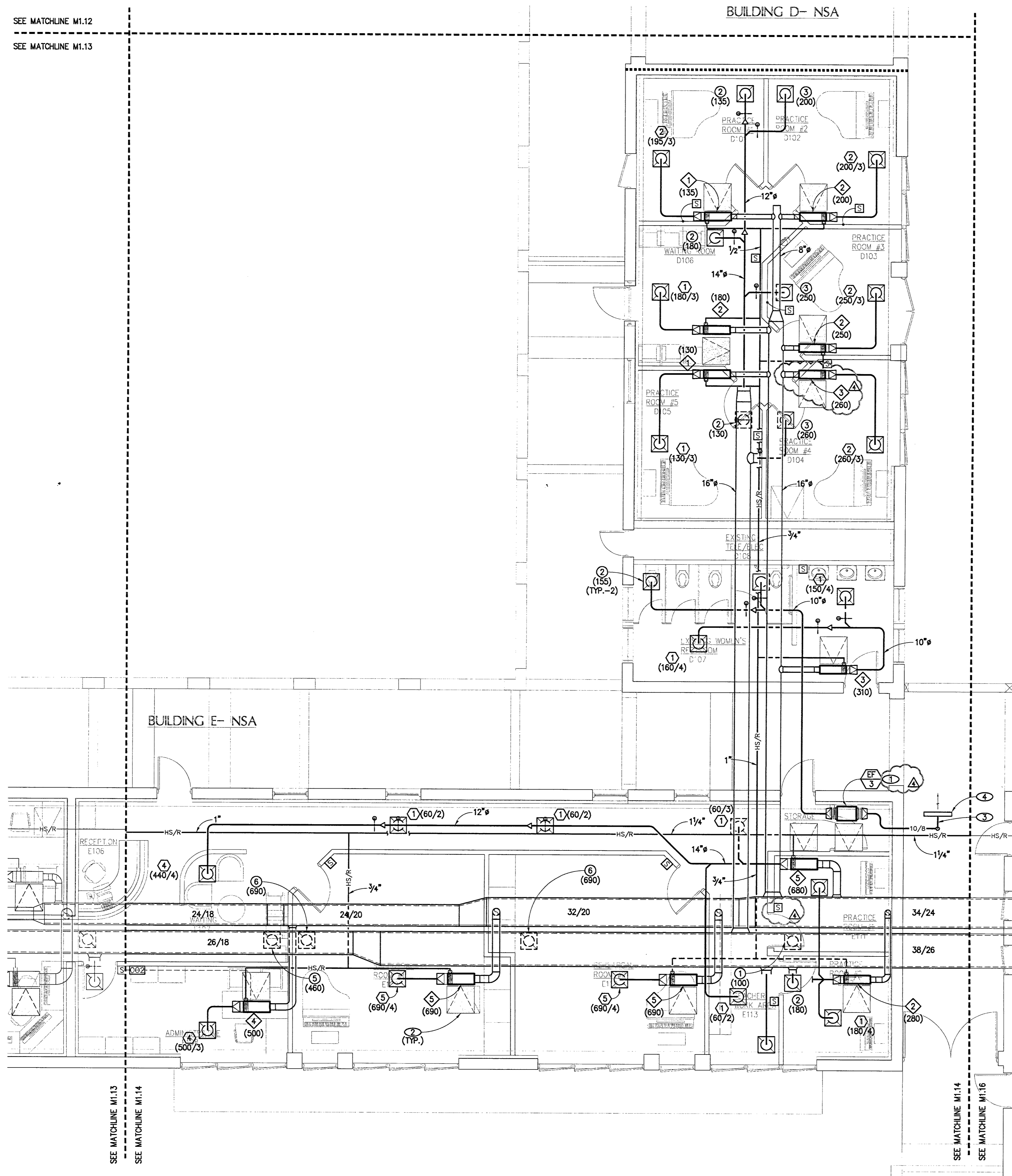


SEE MATCHLINE M1.12  
SEE MATCHLINE M1.13

BUILDING D- NSA

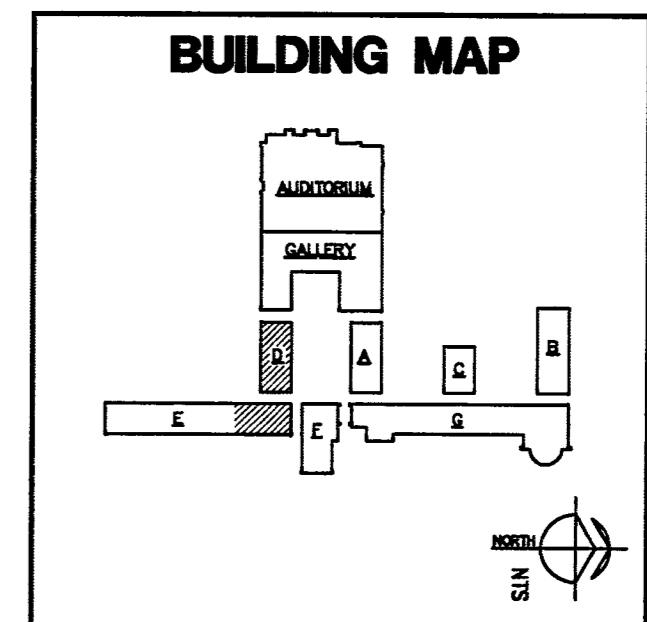


BUILDING E- NSA

NOTES

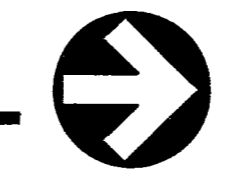
- ① CONNECT  $\frac{EF}{S}$  DISCHARGE TO EXIST'G LOUVER.
- ② COORDINATE ACCESS DOOR LOCATION WITH ARCHITECT PRIOR TO INSTALLATION.
- ③ P.O.C. 10/8 EXHAUST DUCT WITH EXIST LOUVER. BLANK OFF PORTION OF LOUVER NOT USED FOR EXHAUST.
- ④ EXIST. LOUVER, VERIFY EXACT LOCATION IN FIELD.

PLANS APPROVED  
PLUMBING/MECHANICAL  
Building & Safety Dept.  
City of Las Vegas, Nevada  
DATE: 12/12/2006  
SCALE: 1/4" = 1'-0"



ENLARGED FLOOR PLAN-NEVADA SCHOOL OF THE ARTS

SCALE: 1/4" = 1'-0"



OWNER COMMENTS  
FEBRUARY 2, 2007

COMPLET: KGA ARCHITECTURE

440 SOUTH POLARIS AVENUE  
LAS VEGAS, NEVADA 89101  
WWW.KGAARCHITECTURE.COM  
TEL: (702) 386-6532  
FAX: (702) 386-6546

HISTORICAL  
HERITAGE ARCHITECTURE  
& PLANNING  
PHONE: 482-227-7688

ONE -  
VTM  
NEVADA  
PHONE: 702-477-7550

STRUCTURAL -  
BARKER DROTTER ASSOCIATES  
STRUCTURAL ENGINEERS  
PHONE: 702-339-4000

MECHANICAL - PLUMBING - ELECTRICAL -  
LIFE SAFETY - ACCESSIBILITY - GENERAL LIGHTING  
JSA CONSULTING ENGINEERS  
PHONE: 702-363-8800

STAGE LIGHTING & DESIGN -  
CDM&G LIGHTING DESIGN GROUP  
PHONE: 88-229-1203

LANDSCAPE -  
JWZIRINGO & ASSOCIATES  
PHONE: 702-339-8800

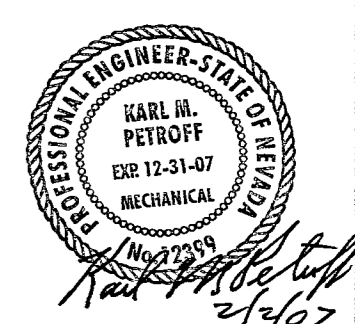
COST ESTIMATING -  
RIDER HUNT  
LEVETT & BAILEY  
702-527-4888

ADA ACCESSIBILITY  
ENDELMAN AND  
ASSOCIATES  
PHONE: 202-331-9442



FIFTH STREET SCHOOL  
REHABILITATION  
BUILDING DEPARTMENT SUBMITTAL

REVISED  
12/2/07



OWNER: CITY OF LAS VEGAS  
DEPARTMENT OF PUBLIC WORKS  
ARCHITECTURAL SERVICES

440 EAST STEWART AVENUE  
LAS VEGAS, NEVADA 89101  
PHONE: (702) 259-6532  
FAX: (702) 386-6546  
TDD: (702) 386-9108

FILE  
ENLARGED FLOOR PLAN  
DATE: 12/12/2006

SCALE  
1/4" = 1'-0"

CITY WORK NO.  
513-65E

SHEET NO.  
M1.14

113344

#06.0109

REVISED 8/27/03