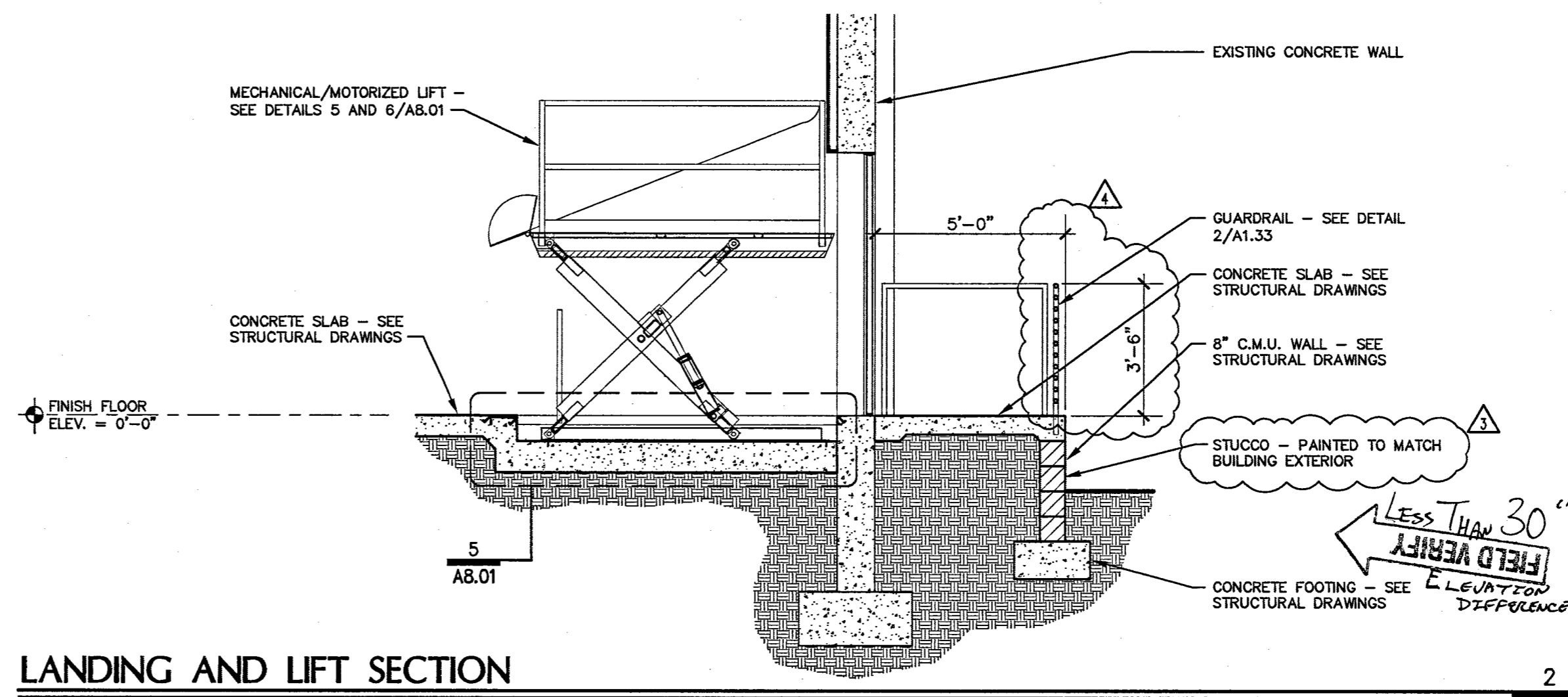


**SITE FENCE**

1/2" = 1'-0"

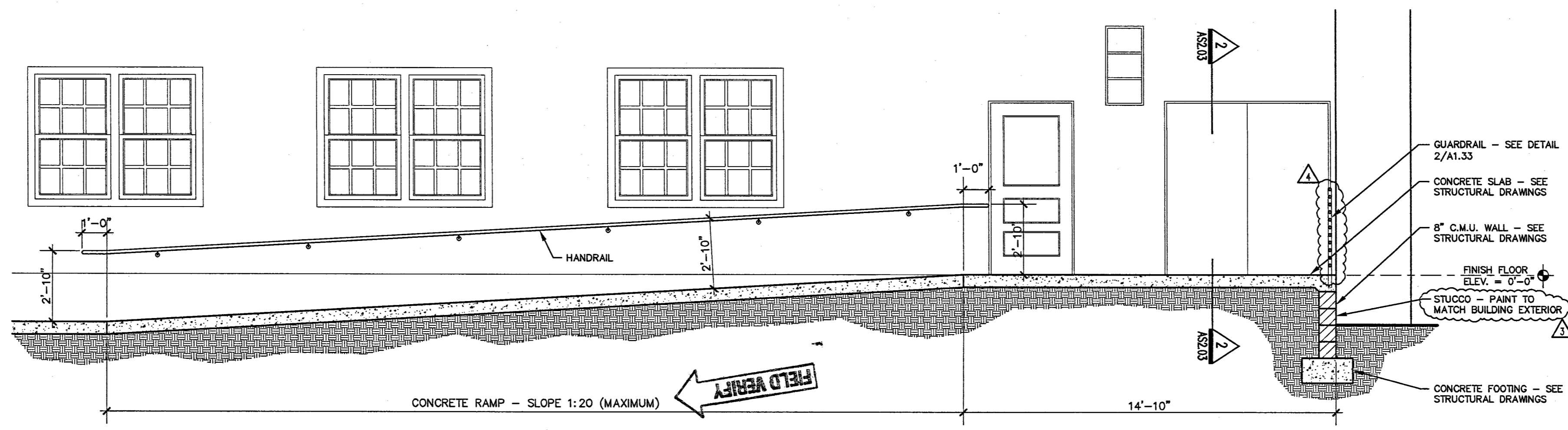
723-SD70



**LANDING AND LIFT SECTION**

SCALE: 3/8" = 1'-0"

723-SD66.DWG



**RAMP SECTION**

SCALE: 3/8" = 1'-0"

723-SD65.DWG

NO.	REVISIONS	DATE	BY	CHKD.
1	CLV COMMENTS	1-1-2007		
2	OWNER COMMENTS	2-9-2007		

CONSULTANT

446 SOUTH POLARIS AVENUE  
LAS VEGAS, NEVADA 89101  
WWW.EGANDARCHITECTURE.COM  
PHONE: 702-735-8888  
FACSIMILE: 702-737-2883

HERITAGE ARCHITECTURE & PLANNING  
PHONE: 89-227-7588

CONTRACTOR

VTI NEVADA  
PHONE: 702-677-2100

STRUCTURAL ENGINEER

BARKER DROTTER ASSOCIATES  
STRUCTURAL ENGINEERS  
PHONE: 702-38-8000

MECHANICAL - PLUMBING - ELECTRICAL  
OR SHAWTY - ACMEICAL - GENERAL LIGHTING

JSA CONSULTING ENGINEERS  
PHONE: 702-962-9000

LANDSCAPE ARCHITECT

CDM LIGHTING DESIGN GROUP  
PHONE: 89-229-2333

LANDSCAPE ARCHITECT

INZEBLING & ASSOCIATES  
PHONE: 702-23-2888

COST ESTIMATING

RIDER HUNT  
LEVITT & BAILEY  
PHONE: 702-227-8888

ADA ACCESSIBILITY

ENDELMAN AND ASSOCIATES  
PHONE: 202-334-6462

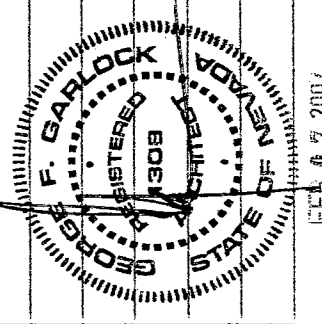


FIFTH STREET SCHOOL  
REHABILITATION  
BUILDING DEPARTMENT SUBMITTAL

REVISED  
12-22-07



REDEVELOPMENT AGENCY



OWNER: CITY OF LAS VEGAS  
DEPARTMENT OF PUBLIC WORKS  
ARCHITECTURAL SERVICES

4400 EAST STEWART AVENUE  
LAS VEGAS, NEVADA 89101  
PHONE: (702) 259-4635  
FAX: (702) 259-4846  
TDD: (702) 259-9106

DATE: 12/12/2006  
SCALE: 1/8" = 1'-0"  
SHEET NO: 513-65E

AS2.03

RECEIVED  
FEB 08 2007  
CITY OF LAS VEGAS  
BUILDING DEPT.

LESS THAN 30"  
FIELD VERIFY  
ELEVATION  
DIFFERENCE

PLANS APPROVED  
ARCHITECTURAL  
Building & Safety Dept.  
City of Las Vegas

FEB 09 2007

Not Not Include Electrical, Plumbing,  
Mechanical, Structural or CM-600  
Improvements Make No Change  
Without Approval Plan  
Not a Term to Violate Any Ordinance

113753