

PREP ROOM - 107

16

SCALE: 3/8" = 1'-0"

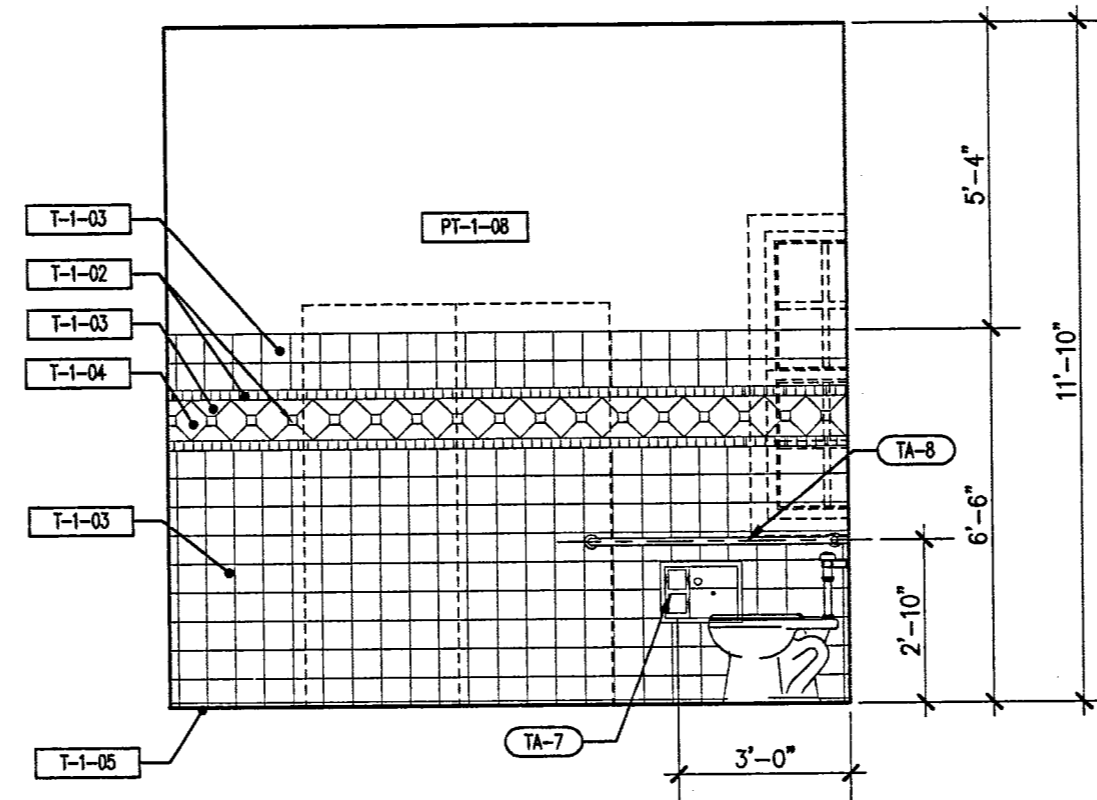
723E037

PREP ROOM - 107

12

SCALE: 3/8" = 1'-0"

723E035

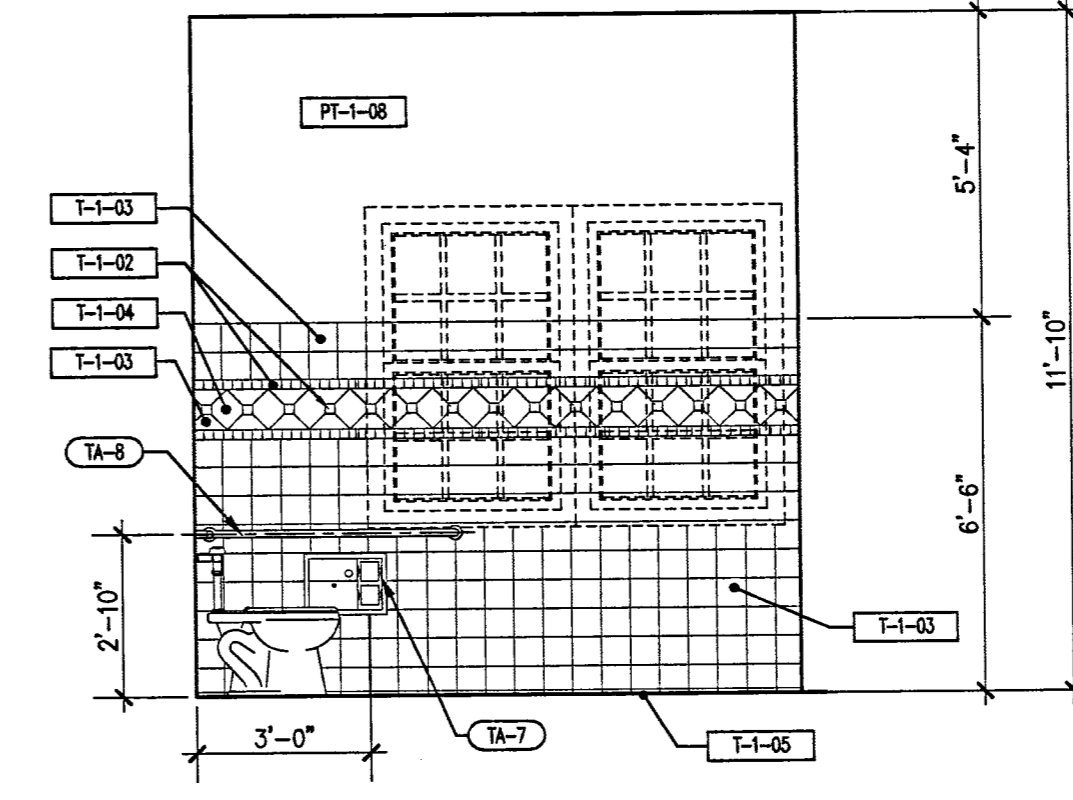


WOMEN'S TOILET - 109

8

SCALE: 3/8" = 1'-0"

723E04

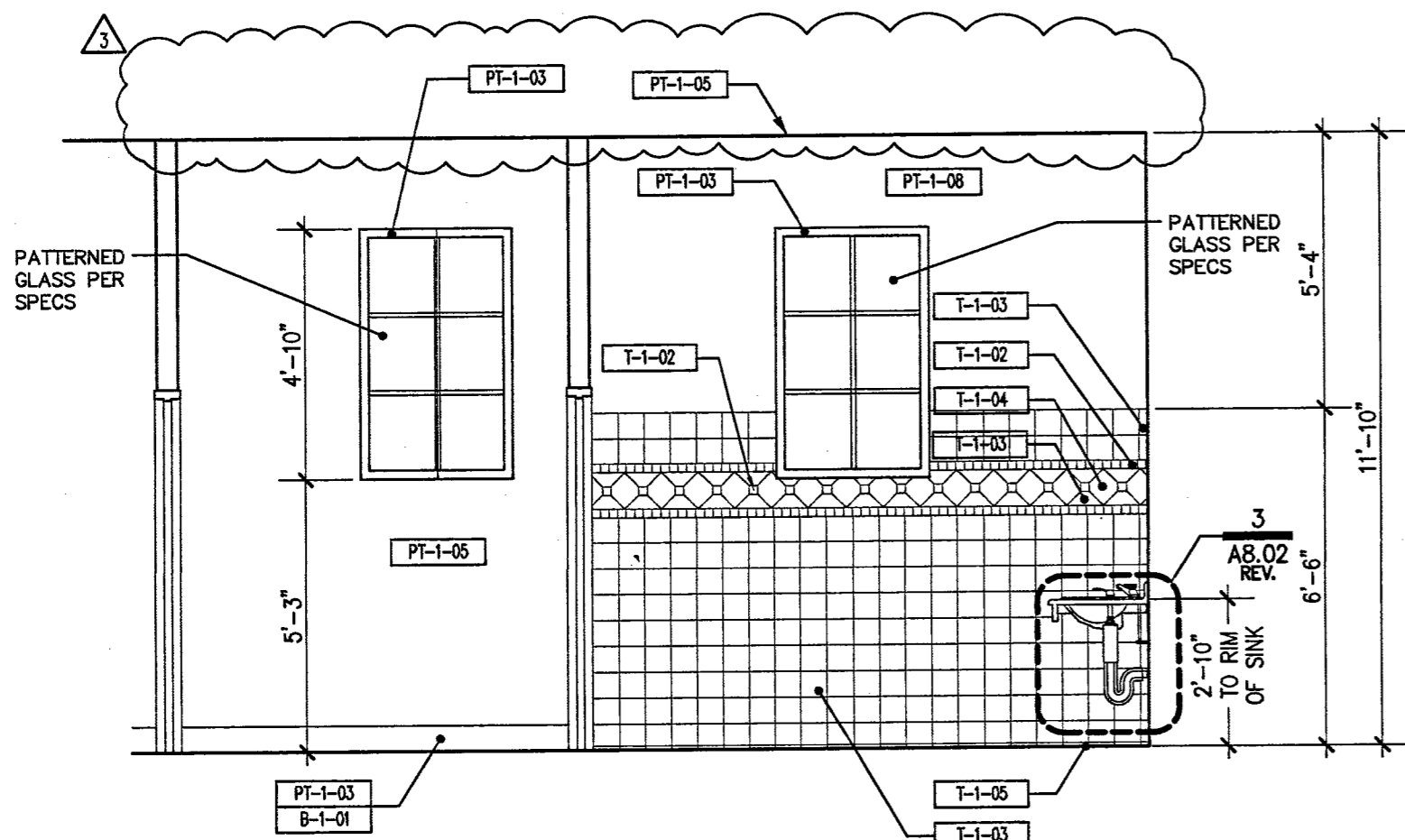


MEN'S TOILET - 113

4

SCALE: 3/8" = 1'-0"

723E08

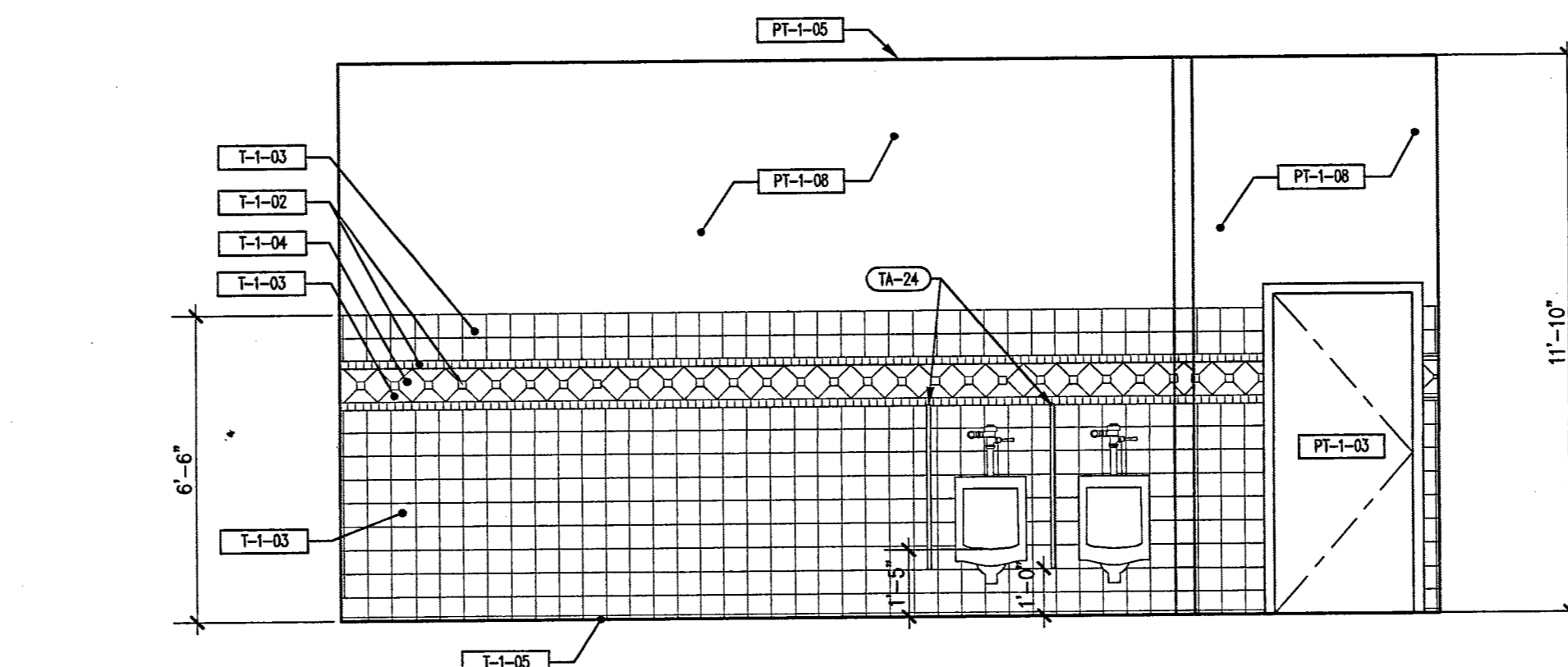


VESTIBULE - 108 AND WOMEN'S TOILET - 109

11

SCALE: 3/8" = 1'-0"

723E02

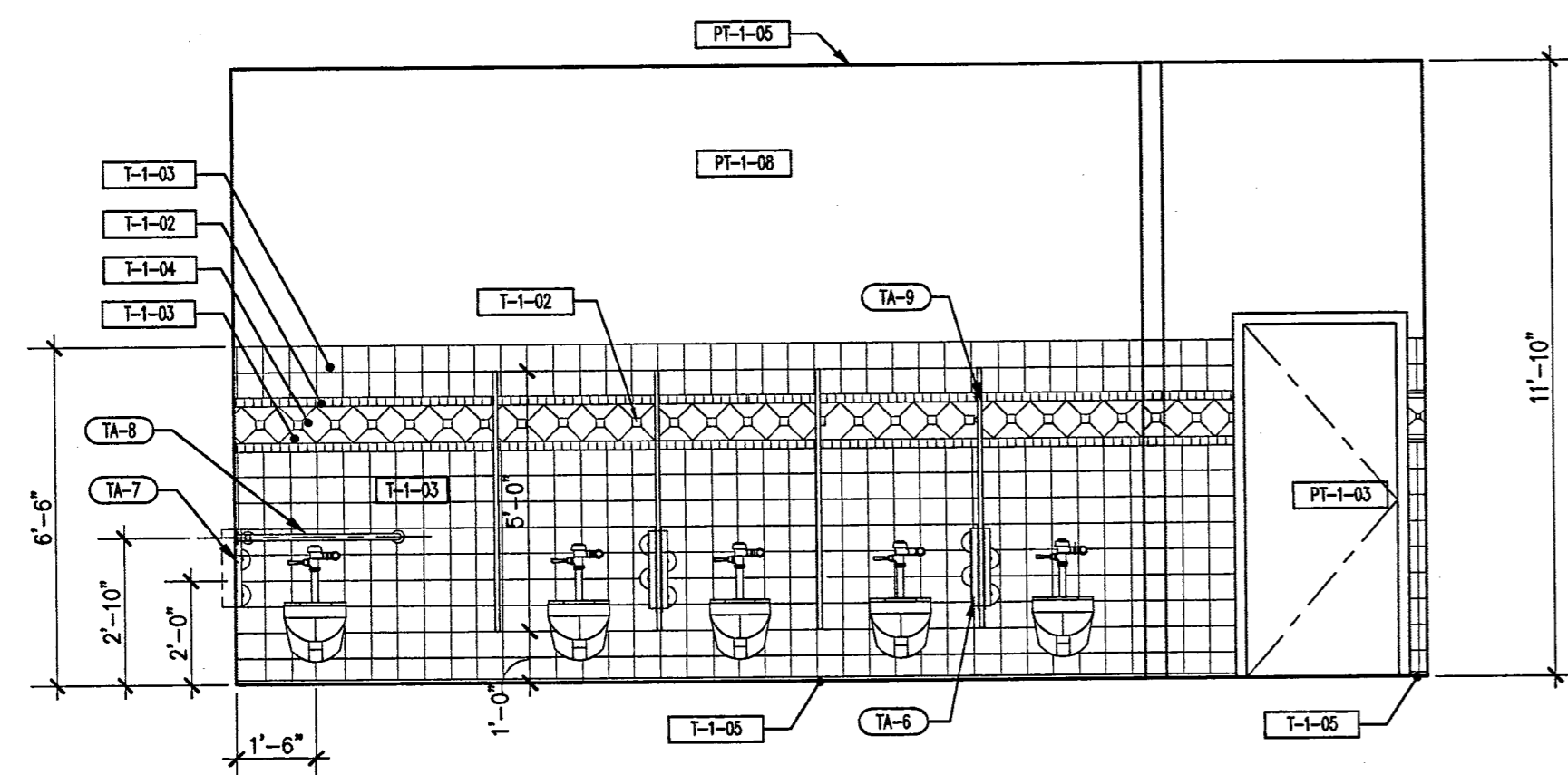


MEN'S TOILET - 113

3

SCALE: 3/8" = 1'-0"

723E05

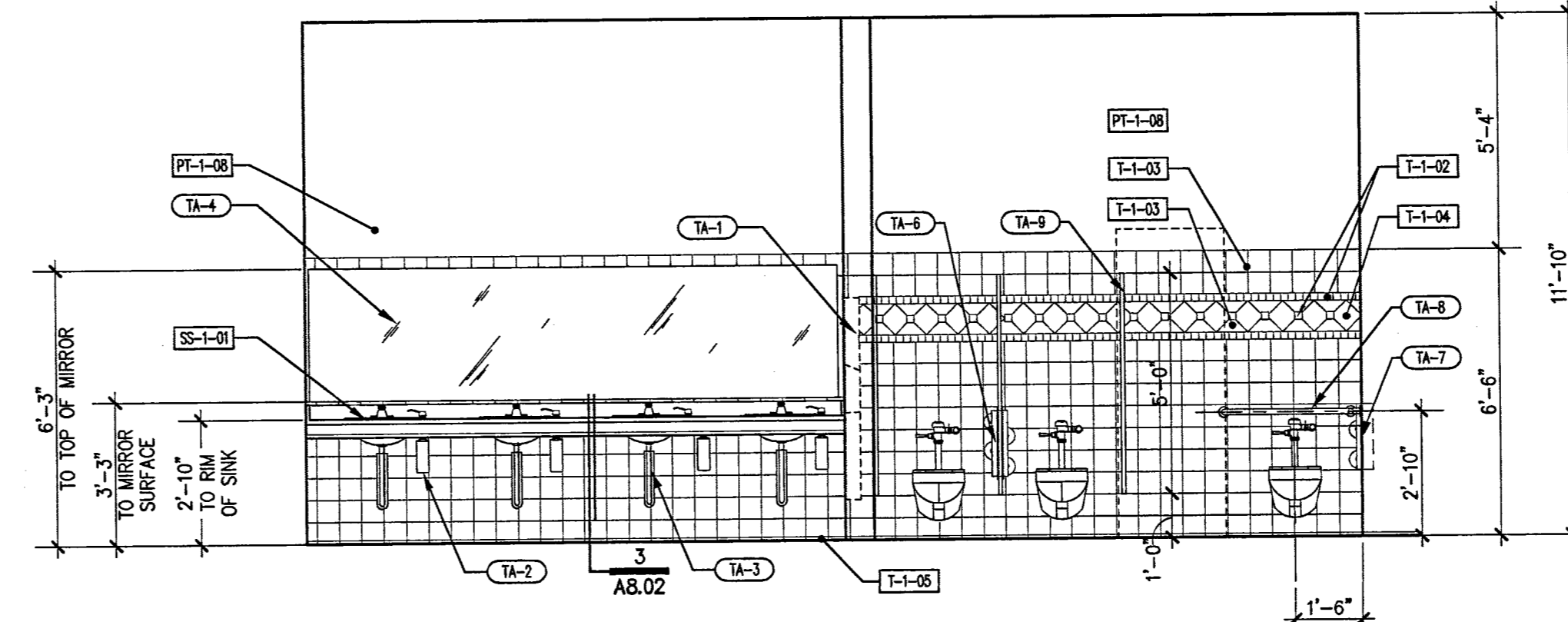


WOMEN'S TOILET - 109

10

SCALE: 3/8" = 1'-0"

723E01

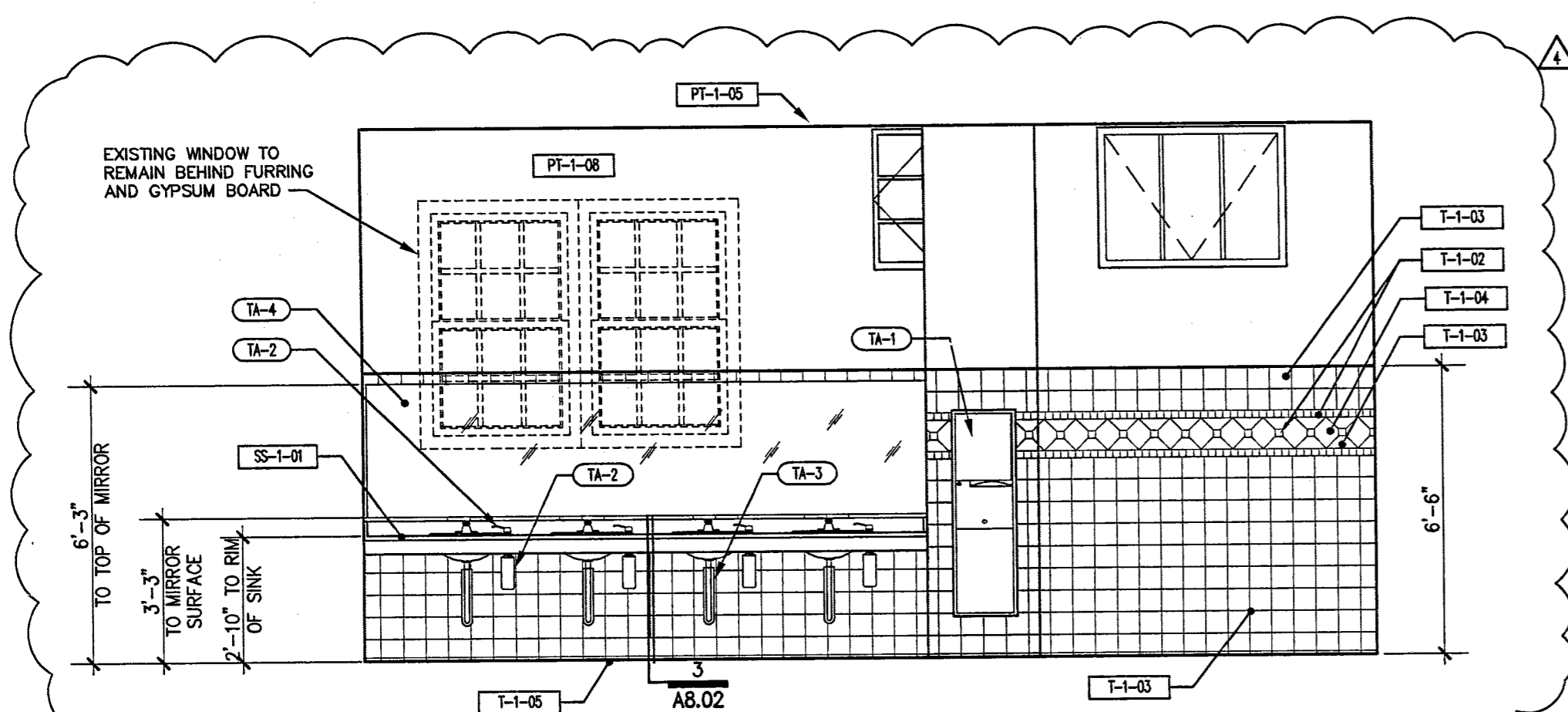


MEN'S TOILET - 113

2

SCALE: 3/8" = 1'-0"

723E07

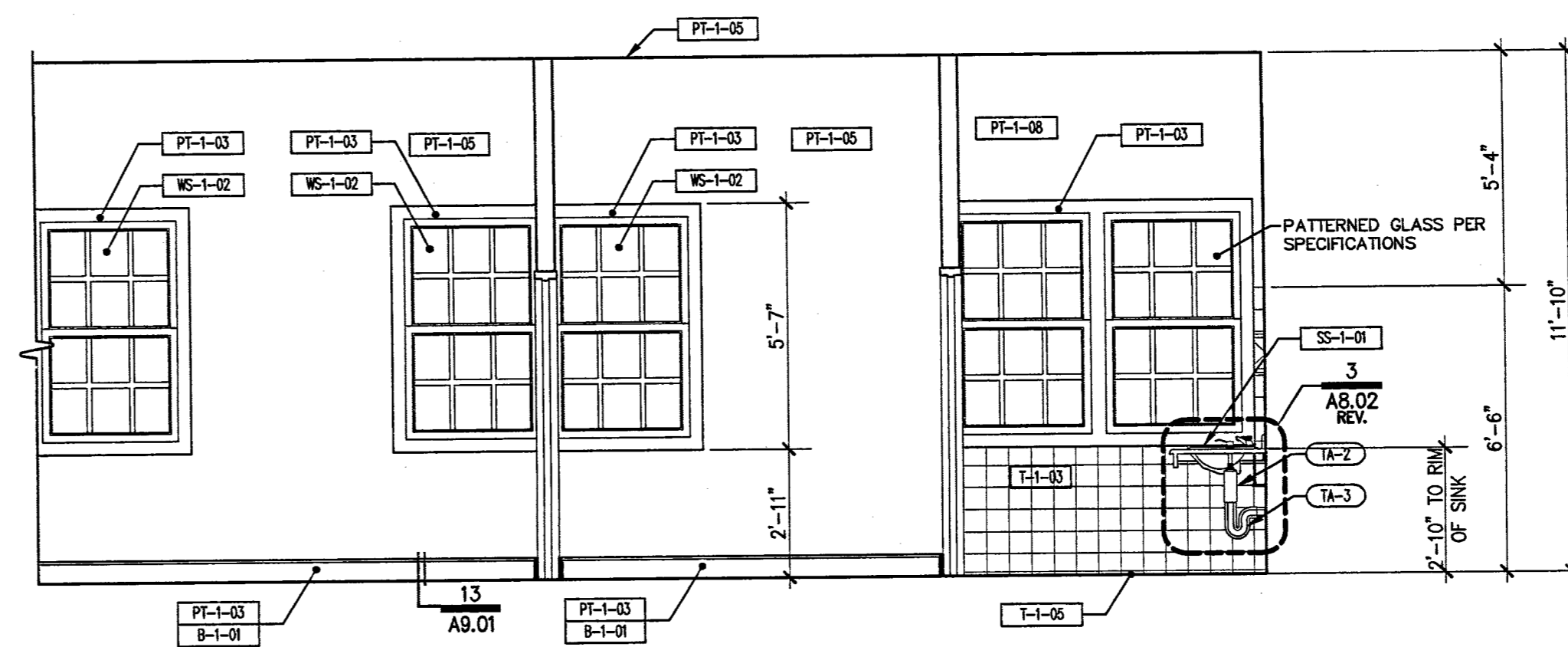


WOMEN'S TOILET - 109

9

SCALE: 3/8" = 1'-0"

723E03



VESTIBULE - 114 AND MEN'S TOILET - 113

1

SCALE: 3/8" = 1'-0"

723E06

TOILET ACCESSORIES

TA-#	DESCRIPTION
TA-1	SEMI-RECESSED PAPER TOWEL DISPENSER/WASTE RECEPTACLE (BOBRICK B-3944). MOUNT TOP OF CABINET AT 50 1/2" A.F.F.
TA-2	COUNTER OR LAVATORY MOUNTED LIQUID SOAP DISPENSER (BOBRICK B-822)
TA-3	FABRIC BURN GUARD-BOBRICK
TA-4	MIRROR-POLISHED EDGE
TA-5	PARTITION - MOUNTED MULTI-ROLL TOILET TISSUE AT 28" A.F.F. (BOBRICK B-4289)
TA-6	PARTITION - MOUNTED TOILET SEAT COVERS AND TOILET TISSUE DISPENSER (BOBRICK B-304)
TA-7	RECESSED TOILET SEAT COVER AND TOILET TISSUE DISPENSER (BOBRICK B-3571)
TA-8	GRAB BAR "L" SHAPED 36"x54" (BOBRICK B-5837). MOUNT CENTER OF BAR AT 34" A.F.F. SEE DETAIL 4/AB.07
TA-9	TOILET PARTITION. SEE DETAIL 2/AB.07
TA-10	SURFACE-MOUNTED PAPER TOWEL DISPENSER (BOBRICK B-262)
TA-11	GRAB BAR (BOBRICK B-5806) X 42). MOUNT CENTER OF BAR AT 34" A.F.F. WITH CENTER OF FLANGE AT 12" FROM BACK WALL. SEE DETAIL 4/AB.07
TA-12	SEMI-RECESSED PAPER DISPENSER (BOBRICK B-897)
TA-13	RECESSED PAPER TOWEL DISPENSER (BOBRICK B-35903)
TA-14	GRAB BAR "L" SHAPED 30" X 42" A.F.F. SEE DETAIL 4/AB.07
TA-15	SOAP DISPENSER (BOBRICK B-2112)
TA-16	TOILET SEAT COVER DISPENSER (BOBRICK B-4221)
TA-17	BABY CHANGING STATION (BOBRICK B-2210)
TA-18	DRINKING FOUNTAIN
TA-19	CERAMIC TILE SHOWER BASE WITH DRAIN. SEE DETAIL 6/AB.07
TA-20	DOOR STOP. SEE DETAIL 3/AB.07
TA-21	12" CONCRETE TIE TRANSITION DETAIL
TA-22	CARPET TO TILE FLOOR TRANSITION DETAIL. SEE DETAIL 5/AB.07
TA-23	GARBAGE DISPOSAL
TA-24	URINAL SCREEN

GENERAL NOTE

1. PROVIDE BACKING FOR ALL FIXTURES AND ACCESSORIES

INTERIOR FINISH SCHEDULE

KEY	DESCRIPTION
AP-1-01	ACOUSTIC WALL PANEL FABRIC-SEE FINISH SCHEDULE SHT. ID1.00/ID1.01
AP-1-02	ACOUSTIC WALL PANEL-SEE FINISH SCHEDULE SHT. ID1.00/ID1.01
AP-1-03	ACOUSTIC CEILING-SEE FINISH SCHEDULE SHT. ID1.00/ID1.01
B-1-01	CUSTOM BASE TO MATCH EXISTING-SEE FINISH SCHEDULE SHT. ID1.00/ID1.01
B-1-02	CUSTOM BASE TO MATCH EXISTING-SEE FINISH SCHEDULE SHT. ID1.00/ID1.01
CM-1-01	CUSTOM CROWN TO MATCH EXISTING-SEE FINISH SCHEDULE SHT. IC.00/ID1.01
DT-1-01	C & A CHOAS 15021 CASSIA BARK SEE FINISH SCHEDULE SHT. ID1.00/ID1.01
DL-1-01	LITECONTROL - CROS SEE FINISH SCHEDULE SHT. EGI.02
DL-1-02	WAC 1128 SEE FINISH SCHEDULE SHT. EGI.02
DL-1-03	STAGE - SEE FINISH SCHEDULE SHT. LTI.01 & LTI.02
DL-1-04	6" APERTURE - NON IC WHITE CLW-SEE FINISH SCHEDULE SHT. EGI.02
DL-1-05	PENDANT FIXTURE-SEE FINISH SCHEDULE SHT. EGI.02
HA-1-01	HANGING ART BRUSHED NICKEL-SEE FINISH SCHEDULE SHT. ID1.00/ID1.01
LM-1-01	LAMINATE-SEE FINISH SCHEDULE SHT. ID1.00/ID1.01
MB-1-01	MARKER/CORD BOARD CHERRY-SEE FINISH SCHEDULE SHT. ID1.00/ID1.01
PT-1-01	PAINT-SEE FINISH SCHEDULE SHT. ID1.00/ID1.01
PT-1-02	PAINT-SEE FINISH SCHEDULE SHT. ID1.00/ID1.01
PT-1-03	PAINT-SEE FINISH SCHEDULE SHT. ID1.00/ID1.01
PT-1-04	PAINT-SEE FINISH SCHEDULE SHT. ID1.00/ID1.01
PT-1-05	PAINT-SEE FINISH SCHEDULE SHT. ID1.00/ID1.01
PT-1-06	PAINT-SEE FINISH SCHEDULE SHT. ID1.00/ID1.01
PT-1-07	PAINT-SEE FINISH SCHEDULE SHT. ID1.00/ID1.01
PT-1-08	PAINT-SEE FINISH SCHEDULE SHT. ID1.00/ID1.01
SF-1-01	STAGE LAMINATE-SEE FINISH SCHEDULE SHT. ID1.00/ID1.01
SS-1-01	SOLID SURFACING COPPER NUGGET-SEE FINISH SCHEDULE SHT. ID1.00/ID1.01
SS-1-02	SOLID SURFACING BLACK LAVA-SEE FINISH SCHEDULE SHT. ID1.00/ID1.01
T-1-01	FIORITO NOCE FR21-SEE FINISH SCHEDULE SHT. ID1.00/ID1.01
T-1-02	KEYSTONES UNGLAZED BLACK-SEE FINISH SCHEDULE SHT. ID1.00/ID1.01
T-1-03	FIORITO NOCE FR21-SEE FINISH SCHEDULE SHT. ID1.00/ID1.01
T-1-04	FIORITO COTTA FR24-SEE FINISH SCHEDULE SHT. ID1.00/ID1.01
T-1-05	VILLAGE BLEND NOCE FR21-SEE FINISH SCHEDULE SHT. ID1.00/ID1.01
WP-1-01	POWDER COATED STEEL PARTITIONS-SEE FINISH SCHEDULE SHT. ID1.00/ID1.01
WO-1-01	WOOD FLOOR-SEE FINISH SCHEDULE SHT. ID1.00/ID1.01
WO-1-02	WOOD PANELS-SEE FINISH SCHEDULE SHT. ID1.00/ID1.01
WO-1-03	WOOD PANELS-SEE FINISH SCHEDULE SHT. ID1.00/ID1.01
WS-1-01	EQUINOX 0100-0110 NEUTRAL-MOTORIZED SEE FINISH SCHEDULE SHT. ID1.00/ID1.01
WS-1-02	WINDOWMATES - CREAM SEE FINISH SCHEDULE SHT. ID1.00/ID1.01

RECEIVED
FEB 08 2007
CITY OF LAS VEGAS
BUILDING DEPT.

OWNER: CITY OF LAS VEGAS
DEPARTMENT OF PUBLIC WORKS
ARCHITECTURAL SERVICES

DATE: 12/12/2006
SCALE: 3/8" = 1'-0"
SHEET NO: 513-65E

NUMBER: XXX-XX-XX
ABBREVIATION

CLV COMMENTS
OWNER COMMENTS

KCA
KCA ARCHITECTS
1000 EAST STEWART AVENUE
LAS VEGAS, NEVADA 89103
PHONE: (702) 259-6535
FAX: (702) 386-6546
TDD: (702) 386-9104

HERITAGE ARCHITECTURE & PLANNING
1000 EAST STEWART AVENUE
LAS VEGAS, NEVADA 89103
PHONE: (702) 259-6535

VTM
NEVADA
PHONE: (702) 259-6535

BARKER DROTTLAR ASSOCIATES
STRUCTURAL ENGINEERS
PHONE: (702) 259-6535

MECHANICAL - PLUMBING - ELECTRICAL -
LIFE SAFETY - ACoustical - GENERAL LIGHTING
SIA CONSULTING ENGINEERS
PHONE: (702) 259-6535

STAGE LIGHTING & DESIGN
CDM LIGHTING DESIGN GROUP
PHONE: (702) 259-6535

COORDINATING
RODER HUNT
LEVETT & BAILEY
PHONE: (702) 259-6535

ADA ACCESSIBILITY
EDELMAN AND ASSOCIATES
PHONE: (702) 259-6535

CITY OF LAS VEGAS
REHABILITATION
BUILDING DEPARTMENT SUBMITTAL

RECEIVED
FEB 08 2007
CITY OF LAS VEGAS
REDEVELOPMENT AGENCY

FILE
DATE: 12/12/2006
SCALE: 3/8" = 1'-0"
SHEET NO: 513-65E

A5.01