

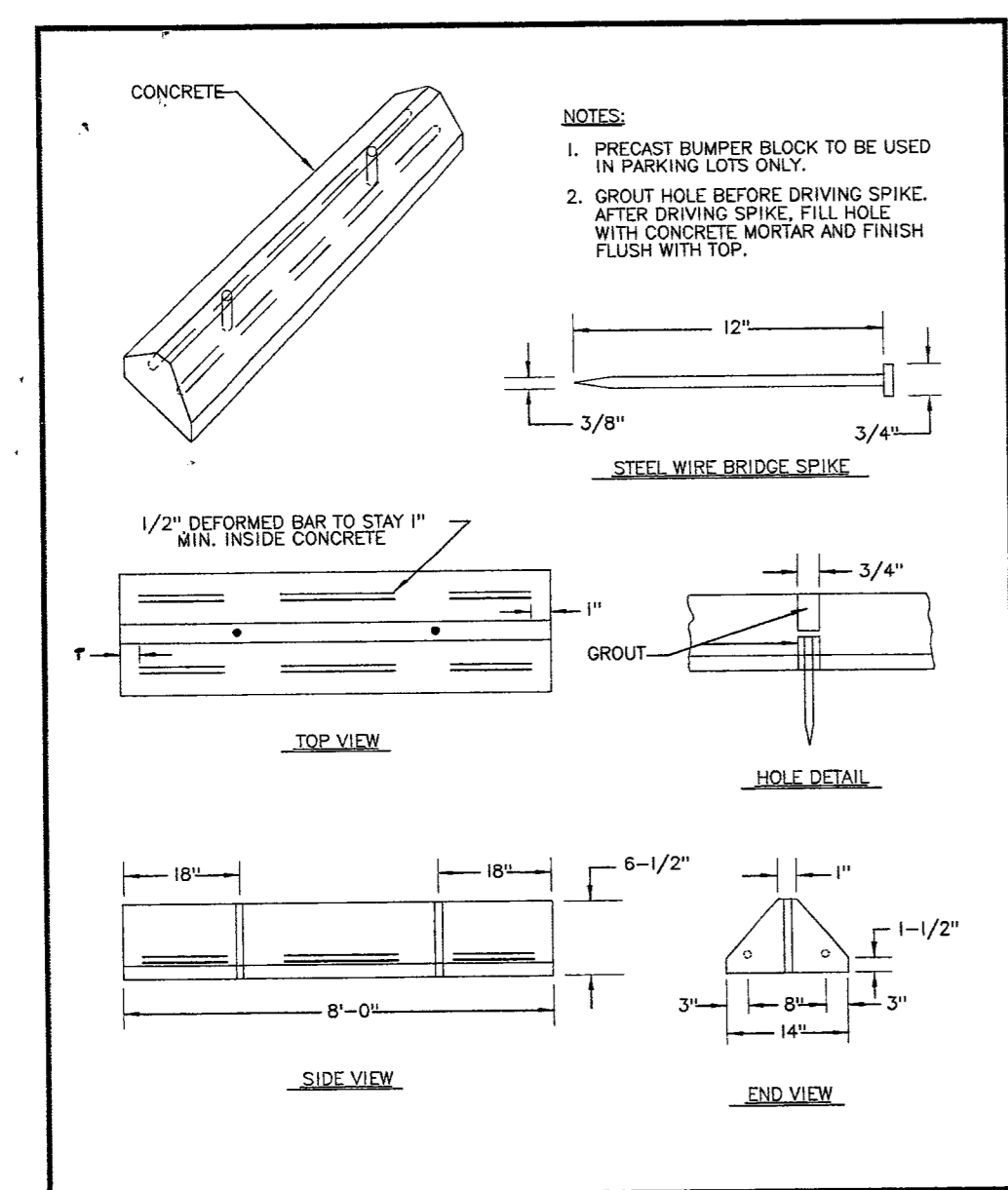
Call before you Underground
1-702-455-7511
CLARK COUNTY TRAFFIC OPERATIONS
1-702-229-6611
FREIGHT AND ARTERIAL SYSTEM OF TRANSPORTATION

Call before you Overhead
1-702-227-2929

Call before you Dig
1-800-227-2600

BASIS OF BEARINGS
THE BASIS OF BEARINGS FOR THIS PROJECT IS NORTH 27°54'36" EAST - THE CENTERLINE OF LAS VEGAS BOULEVARD FROM STATION 79+00 TO STATION 79+00.00 POT TO STATION 79+155+84.84 POT (AND FREMONT AVENUE) BEARS NORTH 27°54'36" EAST PER NEVADA DEPARTMENT OF HIGHWAY DRAWINGS, PROJECT NUMBER F005-1(C), AS SHOWN BY THAT RECORD OF SURVEY ON FILE IN THE OFFICE OF THE COUNTY RECORDER, CLARK COUNTY, NEVADA, IN FILE 67 OF SURVEYS, AT PAGE 79.

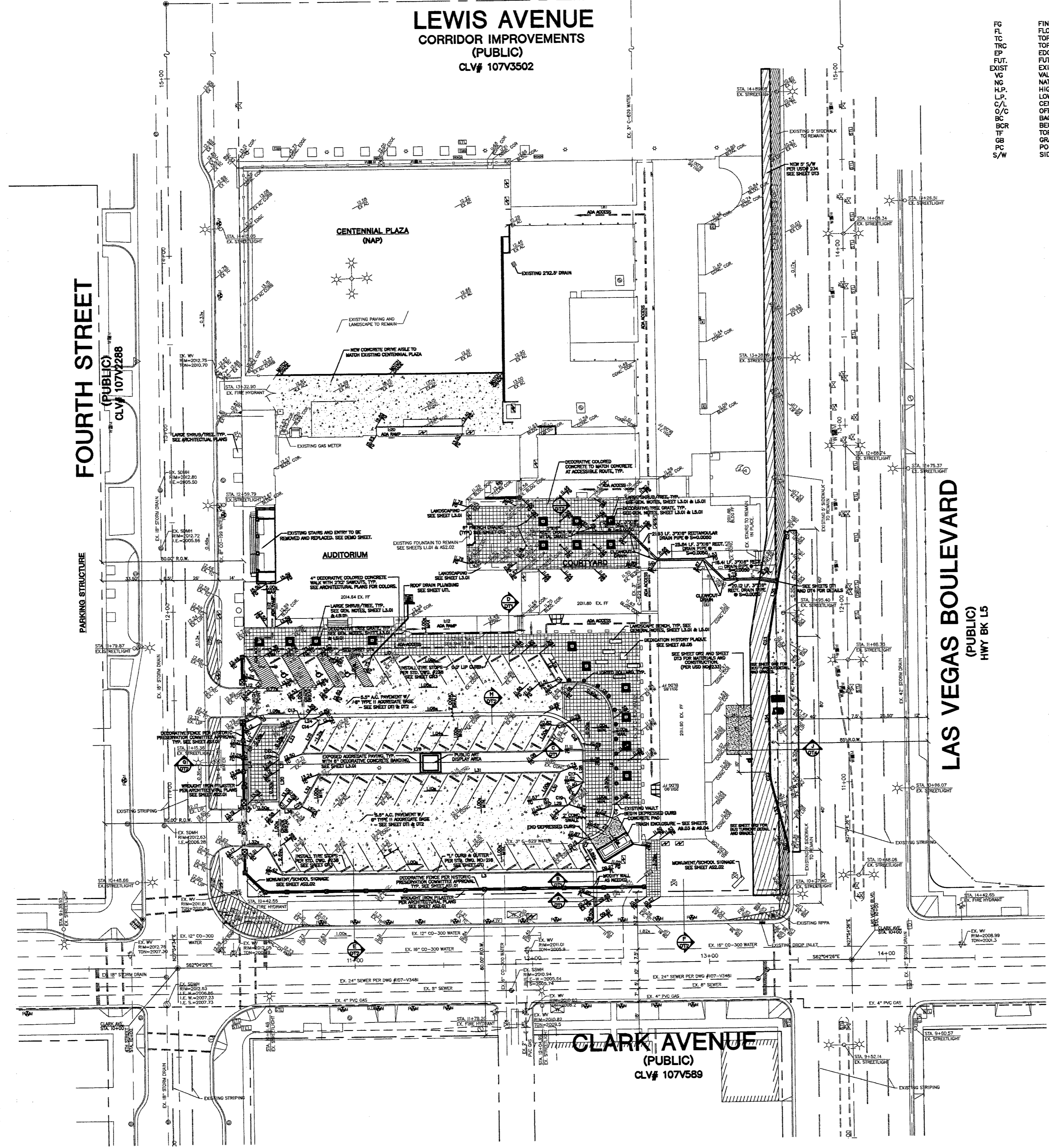
PROJECT BENCHMARK
PROJECT DATUM: CITY OF LAS VEGAS BENCH MARK NO. CLVBM FREMONT 5 - RIVET AND PLATE IN THE TOP OF CURB AT THE NORTHEAST RETURN OF FREMONT AND LAS VEGAS BOULEVARD.
NAVD88 ELEVATION: 2007.32 METERS (6586.70 FEET)



TYPICAL PARKING STOP DETAIL
USD# 238

LINE	LENGTH	BEARING
L1	12.10	S61°24'04"E
L2	17.07	S01°56'08"E
L3	188.22	S61°56'08"E
L4	15.94	N01°56'08"W
L5	48.24	N68°03'32"E
L6	9.51	N61°56'08"W
L7	17.90	N01°56'08"W
L8	165.70	N61°56'08"W
L9	16.23	S01°56'08"E
L10	9.18	N61°51'37"W
L11	19.20	N27°59'09"E
L12	5.66	N27°59'09"E
L13	5.90	N27°59'09"E
L14	1.02	S61°31'00"E
L15	14.29	N58°03'32"E
L16	9.19	N61°54'48"E
L17	19.16	N27°54'48"E
L18	5.66	N27°54'48"E
L19	1.38	N27°54'48"E
L20	21.54	N58°03'32"E
L21	6.43	S61°56'08"E
L22	18.48	S58°03'32"E
L23	126.24	S61°56'08"E
L24	17.02	N58°03'32"E
L25	17.02	S58°03'32"E
L26	8.96	N61°56'08"W
L27	17.30	N58°03'32"E
L28	136.25	N61°56'08"W
L29	20.32	S58°03'32"E
L30	36.21	N13°59'01"E
L31	71.81	N27°52'57"E
L32	57.40	N37°32'36"E
L33	7.32	N62°04'26"W

CURVE	LENGTH	RADIUS	TANGENT	DELTA
C1	3.10	3.00	1.70	59°06'54"
C2	4.69	2.50	3.40	107°24'07"
C3	19.94	20.00	10.94	159°41'13"
C4	7.76	20.50	3.93	21°40'48"
C5	32.20	20.50	20.50	90°00'00"
C6	2.62	2.50	1.44	59°09'55"
C7	5.24	2.50	4.34	120°09'05"
C8	3.95	2.50	2.52	90°34'12"
C9	1.85	3.50	0.95	30°24'52"
C10	5.11	2.50	4.09	117°59'44"
C11	3.93	2.50	2.50	89°59'14"
C12	1.32	2.50	0.67	30°09'04"
C13	2.62	2.50	1.44	60°09'04"
C14	5.24	2.50	4.33	120°09'04"
C15	4.14	2.43	2.76	96°35'59"
C16	17.33	25.94	9.00	158°15'43"
C17	1.09	2.50	0.55	24°54'00"
C18	14.46	49.46	7.28	16°45'13"
C19	2.11	2.41	1.13	50°18'01"
C20	5.24	2.50	4.23	120°09'04"
C21	4.97	25.00	2.50	11°24'02"
C22	4.80	25.05	2.41	10°58'14"
C23	3.44	25.00	1.72	7°50'23"
C24	3.42	25.00	1.71	7°50'23"
C25	0.73	2.50	0.37	16°48'29"
C26	2.61	2.50	1.44	59°09'42"



ABBREVIATIONS

- | | | | |
|-------|--------------------|--------|--------------------------------|
| FG | FINISH GRADE | PT | POINT OF TANGENCY |
| FL | FLOW LINE | PRC | POINT OF REVERSE CURVATURE |
| TC | TOP OF CURB | POC | POINT OF COMPOUND CURVATURE |
| TRC | TOP OF ROLL CURB | BVC | BEGIN VERTICAL CURVE |
| EP | EDGE OF PAVEMENT | MVC | MID-POINT OF VERTICAL CURVE |
| FUT. | FUTURE | EVC | END VERTICAL CURVE |
| EXIST | EXISTING | PWC | POINT OF REVERSE INTERSECTION |
| VG | VALLEY GUTTER | VPI | VERTICAL POINT OF INTERSECTION |
| NG | NATURAL GROUND | TPW | TOP OF PLANTER WALL |
| H.P. | HIGH POINT | TOP | TOP OF CHANNEL/SCARP |
| L.P. | LOW POINT | TOE | TOE OF CHANNEL/SCARP |
| C/L | CENTER LINE | TOP | TOP OF BOX |
| O/C | OFFSET CROWN | PP | POWER POLE |
| BC | BACK OF CURB | TRANS. | TRANSITION |
| BCR | BEGIN CURB RETURN | RET. | RETAINMENT |
| TF | TOP OF FOOTING | INT. | INTERSECTION |
| GB | GRADE BREAK | D.G. | DESIGN GRADE |
| PC | POINT OF CURVATURE | TSW | TOP OF SIDEWALK |
| S/W | SIDEWALK | TW | TOP OF WALL |

LEGEND

- | | |
|----------|------------------------------|
| [Symbol] | EX. BUS STOP |
| [Symbol] | EX. CATCH BASIN |
| [Symbol] | EX. CENTERLINE |
| [Symbol] | EX. CHAIN LINK FENCE |
| [Symbol] | EX. ELECTRIC VAULT/PULL BOX |
| [Symbol] | EX. BUILDING |
| [Symbol] | EX. FIRE HYDRANT |
| [Symbol] | EX. FLAG POLE |
| [Symbol] | EX. FOUND MONUMENT AS NOTED |
| [Symbol] | EX. GAS VALVE |
| [Symbol] | EX. GUARD POST |
| [Symbol] | EX. LIGHT |
| [Symbol] | EX. PARKING METER |
| [Symbol] | EX. RIGHT OF WAY LINE |
| [Symbol] | EX. SANITARY SEWER MANHOLE |
| [Symbol] | EX. SIGN |
| [Symbol] | EX. STORM DRAIN MANHOLE |
| [Symbol] | EX. STREET LIGHT |
| [Symbol] | EX. STREET LIGHT PULL BOX |
| [Symbol] | EX. TELEPHONE MANHOLE |
| [Symbol] | EX. TELEPHONE PULL BOX |
| [Symbol] | EX. TRAFFIC LANE DELINEATION |
| [Symbol] | EX. VAULT |
| [Symbol] | EX. WALL |
| [Symbol] | EX. WATER METER |
| [Symbol] | EX. WATER VALVE |
| [Symbol] | EX. WHEEL CHAIR ACCESS RAMP |
| [Symbol] | EX. WROUGHT IRON FENCE |
| [Symbol] | ADA ACCESS ROUTE |
| [Symbol] | SITE VISIBILITY ZONE |

- | | |
|----------|--|
| [Symbol] | 5.5" A.C. PAVEMENT W/ 6" TYPE II AGGREGATE BASE @ 90% COMPACTION. |
| [Symbol] | 4" CONCRETE PAD W/ 6" TYPE II AGGREGATE BASE @ 90% COMPACTION. |
| [Symbol] | EXPOSED 6" AGGREGATE PAVING @ 90% COMPACTION. |
| [Symbol] | 4" DECORATIVE COLORED CONCRETE PAVING W/ 2 1/2" SANDUCUS AND 6" TYPE II AGGREGATE BASE @ 90% COMPACTION. |
| [Symbol] | NEW 4" CONCRETE TO CREATE 10' WIDE SIDEWALK. SEE USD#234 ON SHEET DT3. |
| [Symbol] | EXISTING 5' WIDE PUBLIC CONCRETE SIDEWALK TO REMAIN IN PLACE. |

REVISIONS

NO.	DATE	DESCRIPTION
1	12/12/2006	GRADING PLAN
2	12/12/2006	SCALE 1" = 30'
3	12/12/2006	CLV# 107V3502

OWNER: CITY OF LAS VEGAS
DEPARTMENT OF PUBLIC WORKS
ARCHITECTURAL SERVICES

DESIGNER: HANSEN ENGINEERING & ARCHITECTS, INC.
1400 EAST STEWART AVENUE, SUITE 200, LAS VEGAS, NEVADA 89101
PHONE: (702) 229-8535
FAX: (702) 229-8535
WWW.HANSEN-ARCHITECTS.COM
TDD: (702) 229-8535

REGISTERED PROFESSIONAL ENGINEER - STATE OF NEVADA
DANIEL HANSEN
No. 12811
CIVIL
12/12/2006

RENEWAL PERIOD: 12/12/2006 TO 12/12/2009

GRADING PLAN
12/12/2006
SCALE 1" = 30'
SHEET NO. 10
CLV# 107V3502

GR3

113235