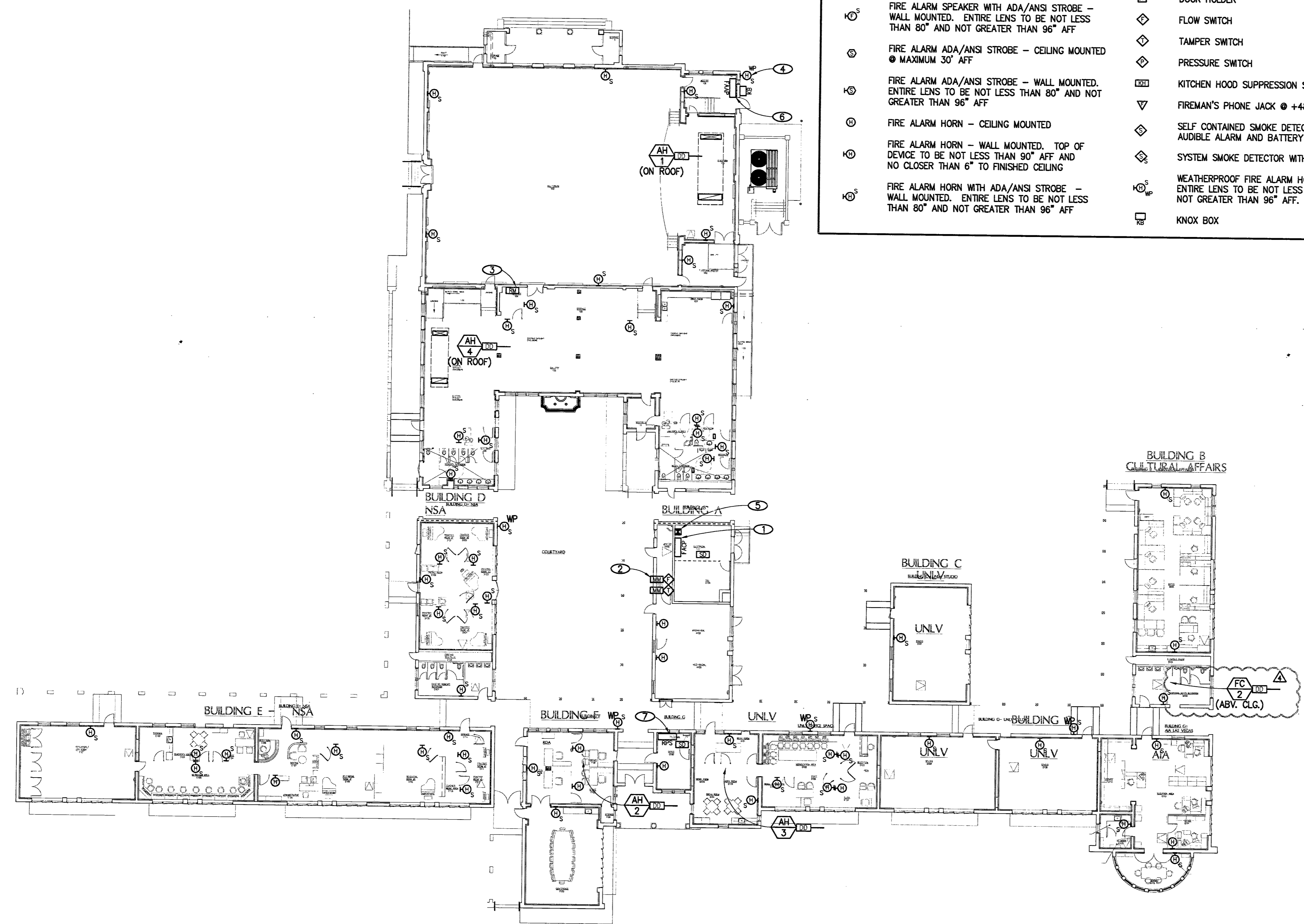


# FIRE ALARM AND DETECTION LEGEND

	FIRE ALARM CONTROL PANEL		SMOKE DETECTOR
	FIRE ALARM ANNUNCIATOR PANEL		HEAT DETECTOR
	FIREFIGHTER SMOKE CONTROL PANEL		DUCT DETECTOR
	FIRE ALARM DATA GATHERING PANEL		FLAME DETECTOR
	REMOTE POWER SUPPLY		MONITOR MODULE
	FIRE ALARM SPEAKER - CEILING MOUNTED		RELAY MODULE
	FIRE ALARM SPEAKER - WALL MOUNTED. TOP OF DEVICE TO BE NOT LESS THAN 90" AFF AND NO CLOSER THAN 6" TO FINISHED CEILING		FIRE ALARM MANUAL PULL/STATION @ +48" AFF
	FIRE ALARM SPEAKER WITH ADA/ANSI STROBE - WALL MOUNTED. ENTIRE LENS TO BE NOT LESS THAN 80" AND NOT GREATER THAN 96" AFF		FIRE/SMOKE DAMPER
	FIRE ALARM ADA/ANSI STROBE - CEILING MOUNTED @ MAXIMUM 30' AFF		DOOR HOLDER
	FIRE ALARM ADA/ANSI STROBE - WALL MOUNTED. ENTIRE LENS TO BE NOT LESS THAN 80" AND NOT GREATER THAN 96" AFF		FLOW SWITCH
	FIRE ALARM ADA/ANSI STROBE - WALL MOUNTED. ENTIRE LENS TO BE NOT LESS THAN 80" AND NOT GREATER THAN 96" AFF		TAMPER SWITCH
	FIRE ALARM HORN - CEILING MOUNTED		PRESSURE SWITCH
	FIRE ALARM HORN - WALL MOUNTED. TOP OF DEVICE TO BE NOT LESS THAN 90" AFF AND NO CLOSER THAN 6" TO FINISHED CEILING		KITCHEN HOOD SUPPRESSION SYSTEM
	FIRE ALARM HORN WITH ADA/ANSI STROBE - WALL MOUNTED. ENTIRE LENS TO BE NOT LESS THAN 80" AND NOT GREATER THAN 96" AFF		FIREMAN'S PHONE JACK @ +48" AFF
	FIRE ALARM HORN WITH ADA/ANSI STROBE - WALL MOUNTED. ENTIRE LENS TO BE NOT LESS THAN 80" AND NOT GREATER THAN 96" AFF		SELF CONTAINED SMOKE DETECTOR WITH AUDIBLE ALARM AND BATTERY BACK-UP
	FIRE ALARM HORN WITH ADA/ANSI STROBE - WALL MOUNTED. ENTIRE LENS TO BE NOT LESS THAN 80" AND NOT GREATER THAN 96" AFF		SYSTEM SMOKE DETECTOR WITH AUDIBLE ALARM
	FIRE ALARM HORN WITH ADA/ANSI STROBE - WALL MOUNTED. ENTIRE LENS TO BE NOT LESS THAN 80" AND NOT GREATER THAN 96" AFF		WEATHERPROOF FIRE ALARM HORN STROBE - ENTIRE LENS TO BE NOT LESS THAN 80" AND NOT GREATER THAN 96" AFF
	FIRE ALARM HORN WITH ADA/ANSI STROBE - WALL MOUNTED. ENTIRE LENS TO BE NOT LESS THAN 80" AND NOT GREATER THAN 96" AFF		KNOX BOX

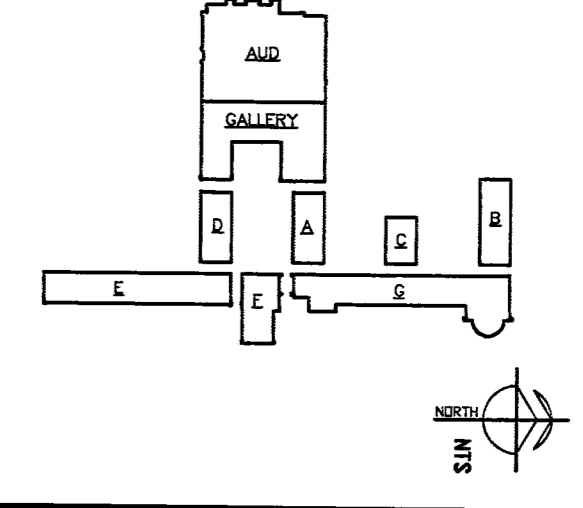


# DRAWING NOTES

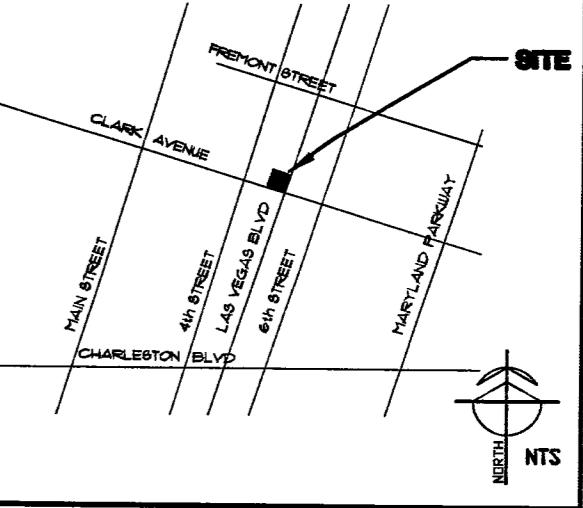
- FACP TO BE PROVIDED WITH AN APPROVED DIALER TO TRANSMIT THE FOLLOWING SIGNALS TO AN APPROVED SUPERVISING STATION:
  - WATERFLOW ALARM
  - FIRE ALARM
  - VALVE TAMPER ALARM
  - SYSTEM TROUBLE
- MONITOR MODULES FOR SPRINKLER WATERFLOW AND TAMPER SWITCHES. COORDINATE WITH SPRINKLER SHOP DRAWINGS FOR DEVICE LOCATIONS AND QUANTITIES.
- RELAY MODULE CONNECTED TO AUDITORIUM AUDIO/VISUAL EQUIPMENT PANEL FOR ALARM SHUTDOWN.
- WEATHERPROOF HORN/STROBE TO BE LOCATED ON THE SIDE OF THE BUILDING IN DIRECT VIEW OF THE FIRE DEPARTMENT CONNECTION (FDC) AND MINIMUM 10 FEET ABOVE GRADE. HORN/STROBE TO ACTIVATE UPON SPRINKLER WATERFLOW SWITCH ALARM ONLY.
- MANUAL PULL STATION TO BE LOCATED AT AN APPROVED LOCATION PER CITY OF LAS VEGAS FIRE AND RESCUE REQUIREMENTS.
- REMOTE FIRE ALARM ANNUNCIATOR PANEL TO BE LOCATED AT AN APPROVED LOCATION PER CITY OF LAS VEGAS FIRE AND RESCUE REQUIREMENTS.
- FIRE ALARM CONTRACTOR TO PROVIDE THE PROPER QUANTITY OF REMOTE POWER SUPPLIES.

RECEIVED  
FEB 06 2007  
CITY OF LAS VEGAS  
BUILDING DEPARTMENT

# BUILDING MAP



# VICINITY MAP



113417  
**FIRE ALARM FLOOR PLAN**  
SCALE: 1/16" = 1'-0"

**OWNER COMMENTS**  
FEBRUARY 6, 2007

**KGA ARCHITECTURE**  
448 SOUTH POLAR AVENUE  
LAS VEGAS, NEVADA 89101  
WWW.KGAARCHITECTURE.COM  
PHONE: 702-367-1000  
FACSIMILE: 702-367-2043

**HERITAGE ARCHITECTURE & PLANNING**  
PHONE: 602-277-7588

**VTN NEVADA**  
PHONE: 702-473-7250

**STRUCTURAL - BARBER DROTTER ASSOCIATES STRUCTURAL ENGINEERS**  
PHONE: 702-30-4000

**MEDICAL - PLUMBING - ELECTRICAL - LIFE SAFETY - ACoustical - GENERAL LIGHTING**  
**JBA CONSULTING ENGINEERS**  
PHONE: 702-30-4000

**SCAFFOLDING & DESIGN - CDH LIGHTING DESIGN GROUP**  
PHONE: 888-229-2222

**LANDSCAPE - JAZZINO & ASSOCIATES**  
PHONE: 702-33-2280

**COST ESTIMATING - ROGER HAYNT, LEVETT & BAILEY**  
PHONE: 702-227-8888

**ADA ACCESSIBILITY - ENDELMAN AND ASSOCIATES**  
PHONE: 202-334-5442

**CITY OF LAS VEGAS**

**FIFTH STREET SCHOOL REHABILITATION SUBMITTAL**  
**BUILDING DEPARTMENT SUBMITTAL**



OWNER: CITY OF LAS VEGAS  
DEPARTMENT OF PUBLIC WORKS  
ARCHITECTURAL SERVICES

400 EAST STEWART AVENUE  
LAS VEGAS, NEVADA 89101  
PHONE: (702) 229-6555  
FAX: (702) 384-4848  
TDD: (702) 386-9108

**FIRE ALARM FLOOR PLAN**  
DATE: 12/12/2006  
SCALE: 1/16" = 1'-0"  
DRAWING NO: 513-65E

**FA100**