

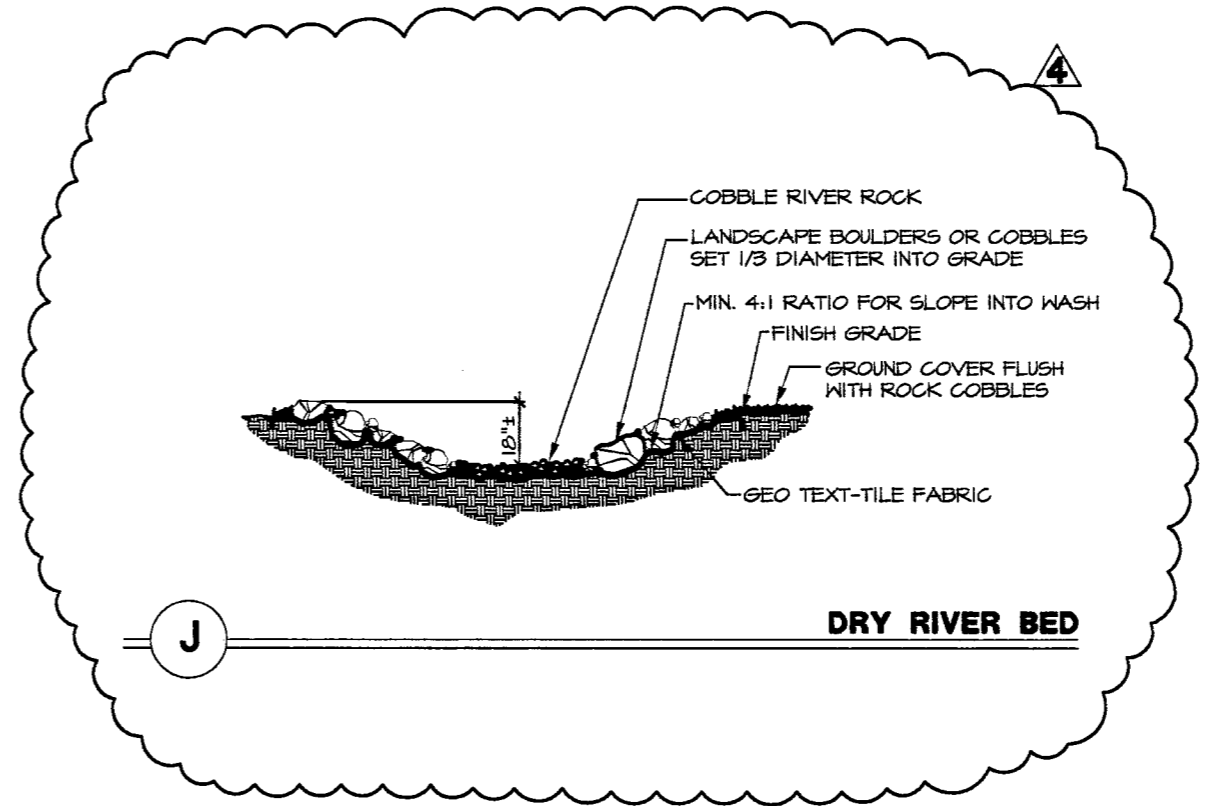
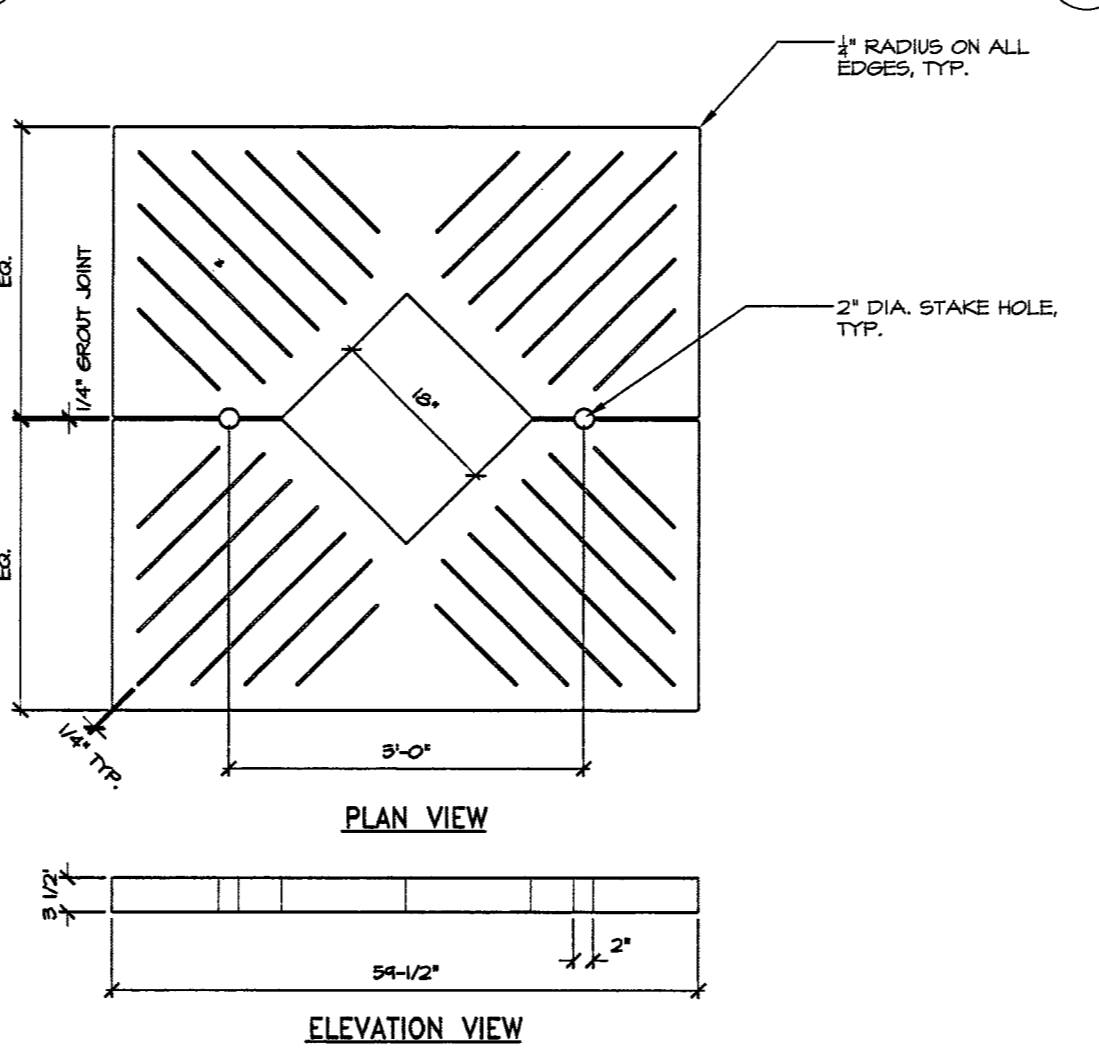
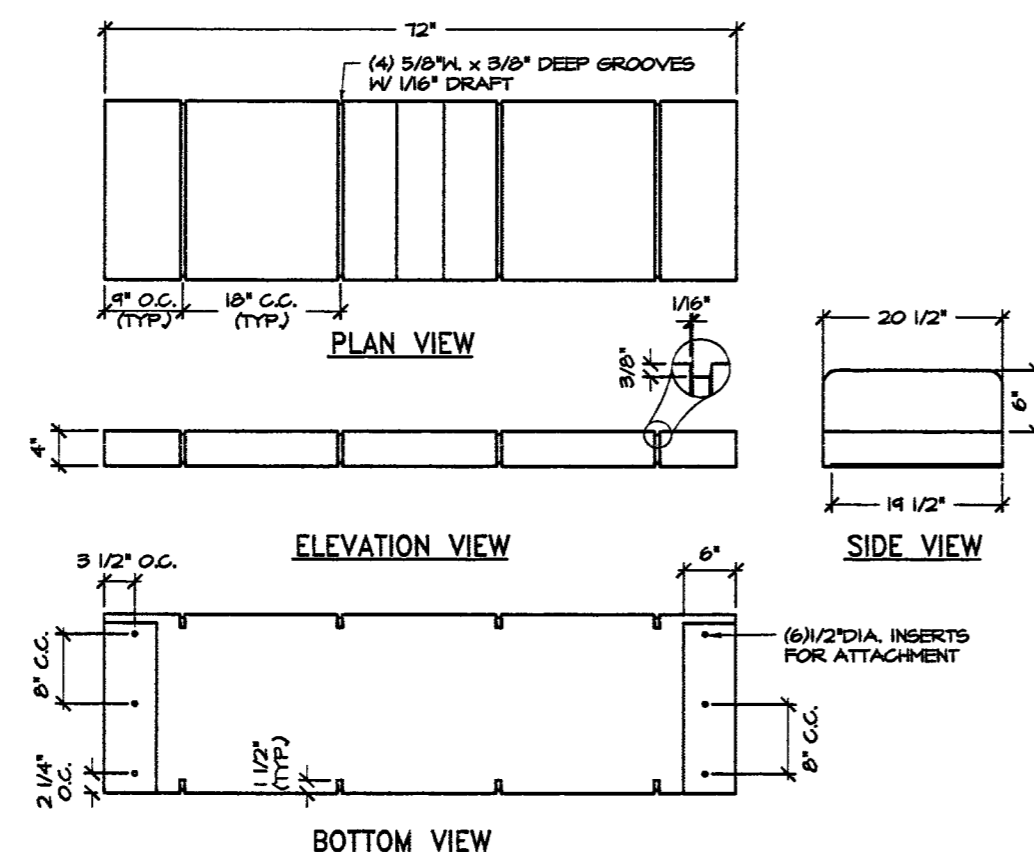
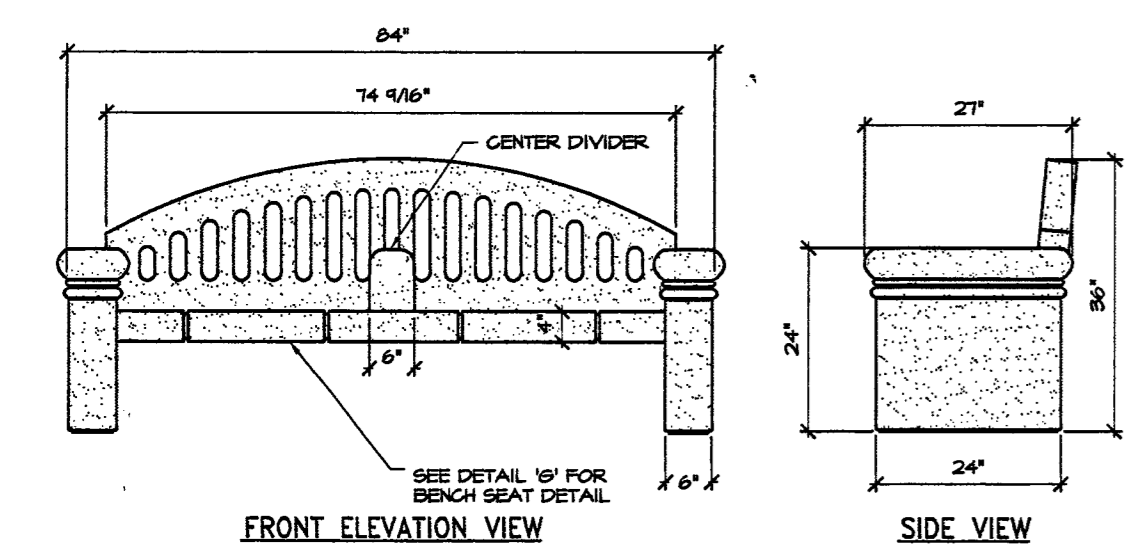
A. TREE PLANTING AND STAKING

B. MULTI-TRUNK TREE PLANTING AND STAKING

C. SHRUB PLANTING

D. ROCK GROUND COVER DETAIL

E. LANDSCAPE BOULDER PLACEMENT



F. PARK BENCH

G. PARK BENCH SEAT DETAIL

H. TREE GRATE DETAIL

J. DRY RIVER BED

NOTES:
1. USE EPOXY ADHESIVE TO ANCHOR THE BENCH TO THE FOOTING.
2. INSTALL AS PER MANUFACTURER'S RECOMMENDATIONS AND SPECIFICATIONS.
3. SUBMIT SHOP DRAWINGS FOR APPROVAL PRIOR TO CONSTRUCTION.
4. ALL EDGES TO HAVE 1/4" RADIUS MIN.
5. BENCH SHALL HAVE A CENTER DIVIDER.
6. SEE SHEET L3.01 FOR COLOR, FINISH, MODEL NUMBER, AND MANUFACTURER.

NOTES:
1. MANUFACTURING TOLERANCE 1/4"
2. FRAMES NOT INCLUDED.
3. SUBMIT SHOP DRAWINGS FOR APPROVAL PRIOR TO CONSTRUCTION.
4. ALL EDGES TO HAVE 1/4" RADIUS MIN.
5. SEE SHEET L3.01 FOR MODEL NUMBER, AND MANUFACTURER.

RECEIVED
FEB 08 2007
CITY OF LAS VEGAS
BUILDING DEPT.

REVISED 1/4/07
OWNER COMMENTS 2/2/07

CONSULTANT
IGA
STRUCTURAL ENGINEERS
446 SOUTH POLARIS AVENUE
LAS VEGAS, NEVADA 89101
WWW.IGASTRUCTURE.COM
TELEPHONE 702.367.1800
FACSIMILE 702.367.2043
HOURS: 9:00 AM - 5:00 PM

CONSULTANT
HERITAGE ARCHITECTURE
CONSULTING ENGINEERS
PHONE 402-279-7888

CONSULTANT
VTN
NEVADA
PHONE 702-979-7530

CONSULTANT
SKANKER DROTTER ASSOCIATES
STRUCTURAL ENGINEERS
PHONE 702-367-4000

CONSULTANT
MECHANICAL - PLUMBING - ELECTRICAL - LIFE SAFETY - ACoustical - GENERAL LIGHTING
JSA CONSULTING ENGINEERS
PHONE 702-367-8888

CONSULTANT
STAGE LIGHTING & DESIGN
CD-M LIGHTING DESIGN GROUP
PHONE 702-367-2323

CONSULTANT
LANDSCAPE ARCHITECTURE
JWZUNINO & ASSOCIATES
PHONE 702-253-9900

CONSULTANT
COST ESTIMATING
RENE HEINT
LEVETT & BAILEY
PHONE 702-272-6888

CONSULTANT
ADA ACCESSIBILITY
ENDELMAN AND ASSOCIATES
PHONE 202-339-5442

CITY OF LAS VEGAS
NEVADA

FIFTH STREET SCHOOL
REHABILITATION
BUILDING DEPARTMENT SUBMITTAL

REVISED
1/27/07

CITY OF LAS VEGAS
REDEVELOPMENT AGENCY

OWNER: CITY OF LAS VEGAS
DEPARTMENT OF PUBLIC WORKS
ARCHITECTURAL SERVICES

400 EAST STEWART AVENUE
LAS VEGAS, NEVADA 89101
PHONE: (702) 253-8335
FAX: (702) 384-8846
TDD: (702) 384-8108

DATE: 12/12/2006
SCALE: NTS
CLV DWG NO:
SHEET NO:
SHEET NO: **L5.01**

JWZUNINO & ASSOCIATES
LANDSCAPE ARCHITECTURE LAND PLANNING
3701 South Jones Blvd. - Las Vegas - Nevada 89146
Phone: 702.253.9900 - Fax: 702.253.9016 - E-Mail: jwz@jwzunino.com