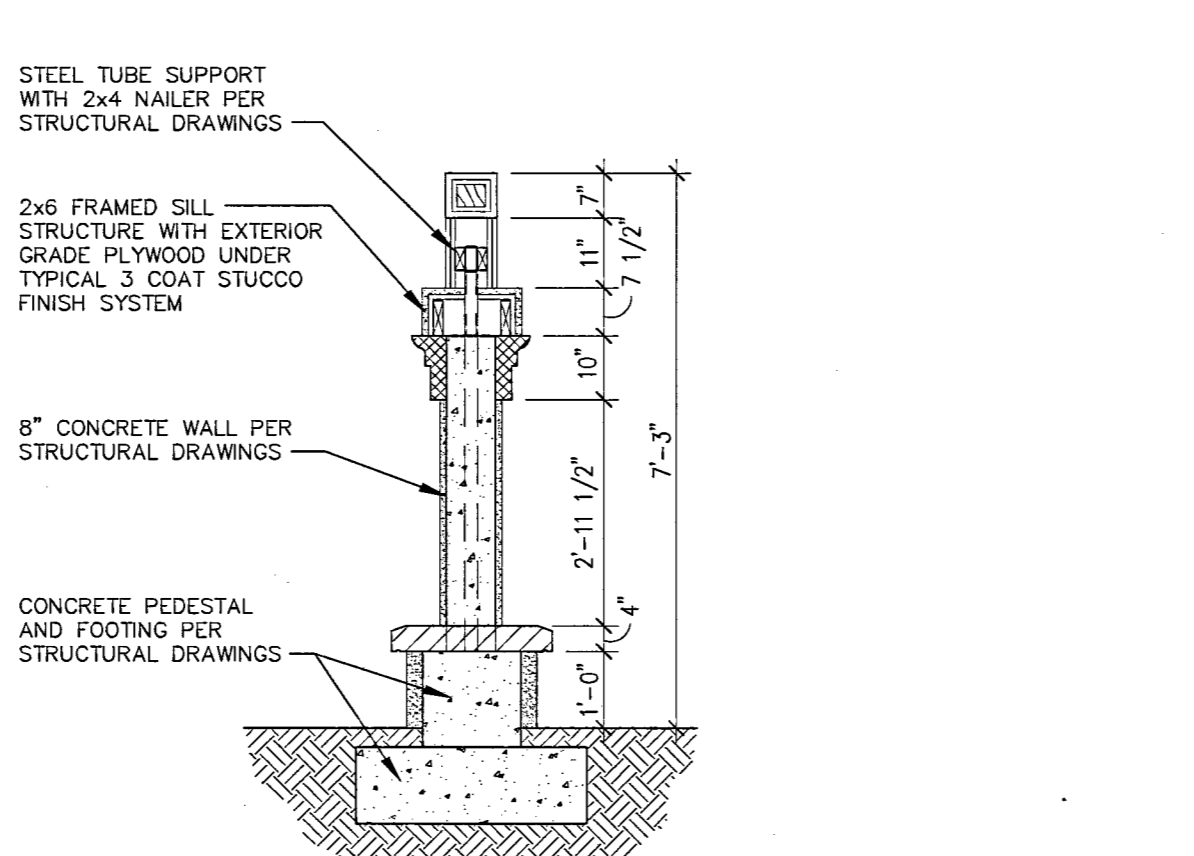
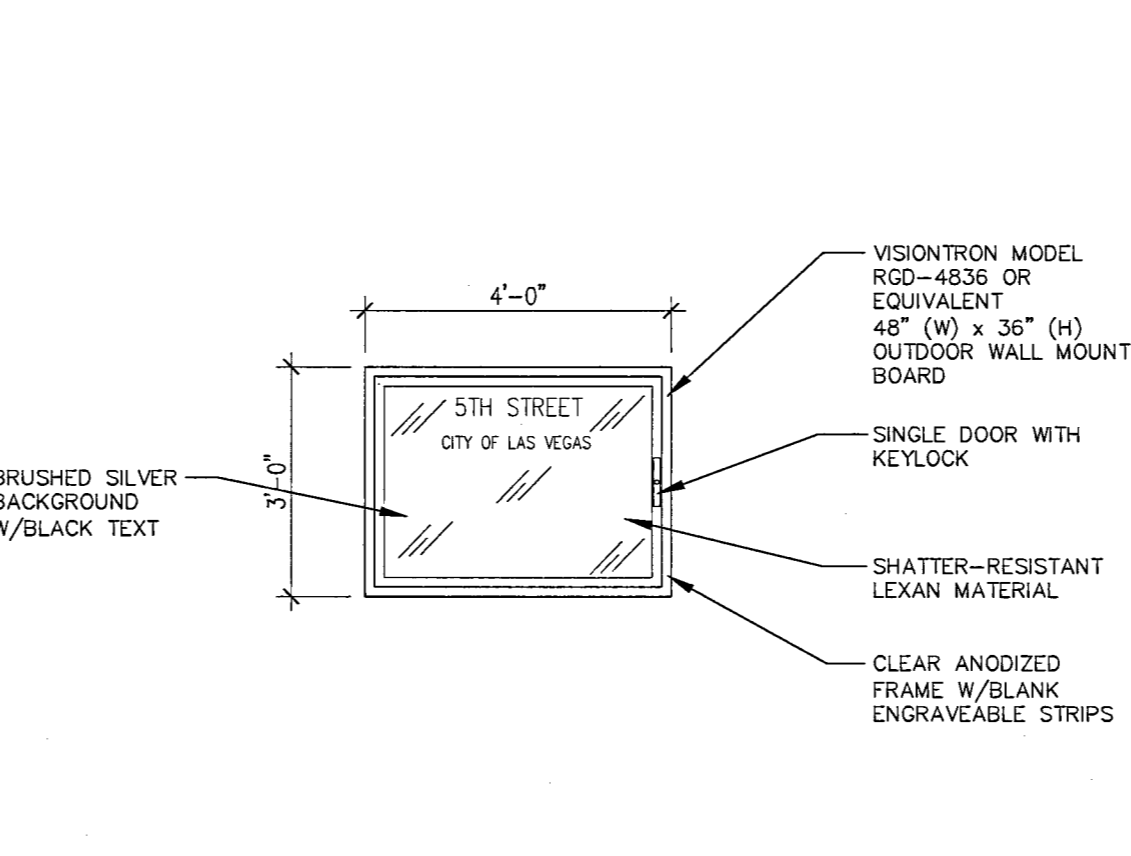


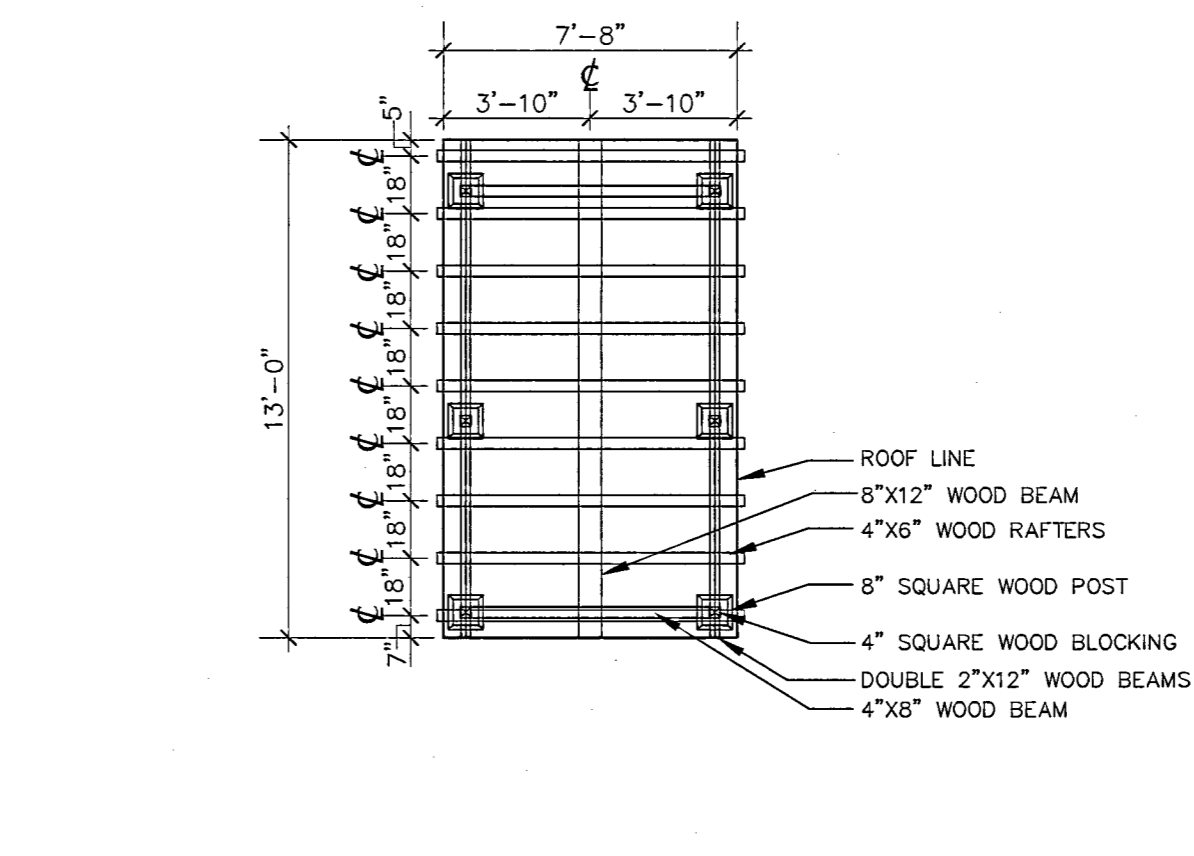
**MONUMENT FRONT SECTION** 16  
SCALE: 1/2" = 1'-0" 723-SD22



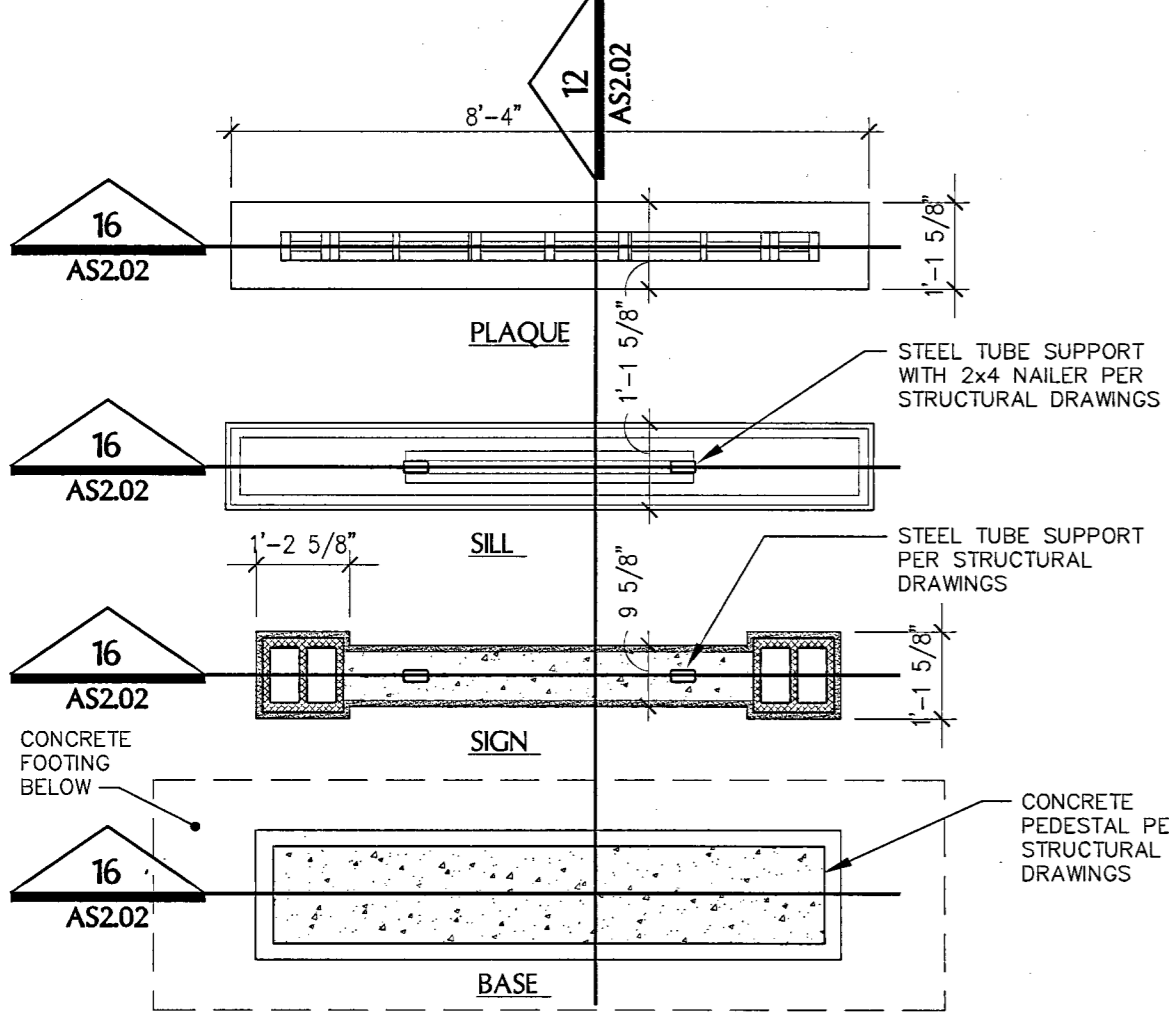
**MONUMENT SIDE SECTION** 12  
SCALE: 1/2" = 1'-0" 723-SD22



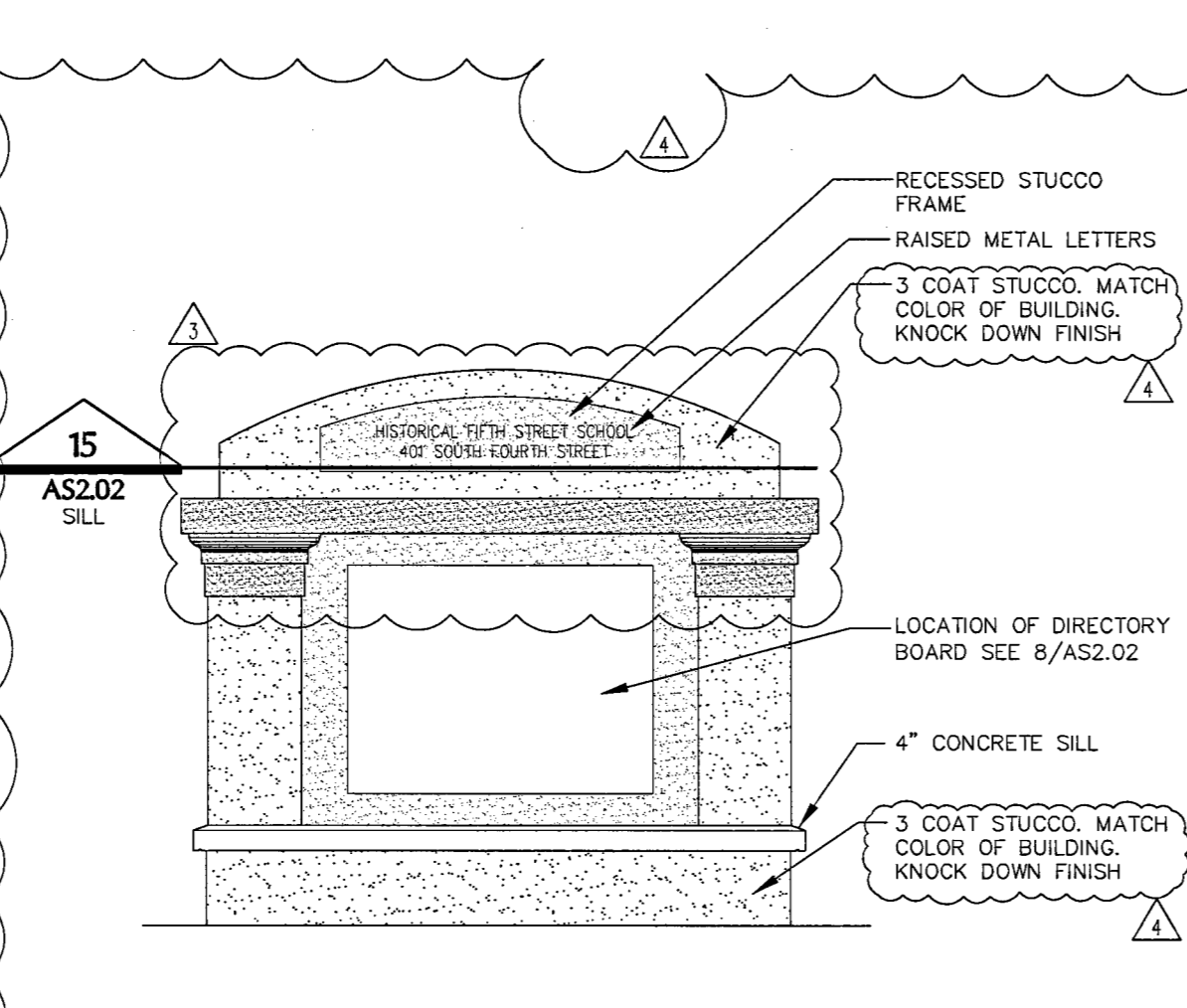
**STRIP DIRECTORY BOARD** 8  
SCALE: 1/2" = 1'-0" 723-SD22



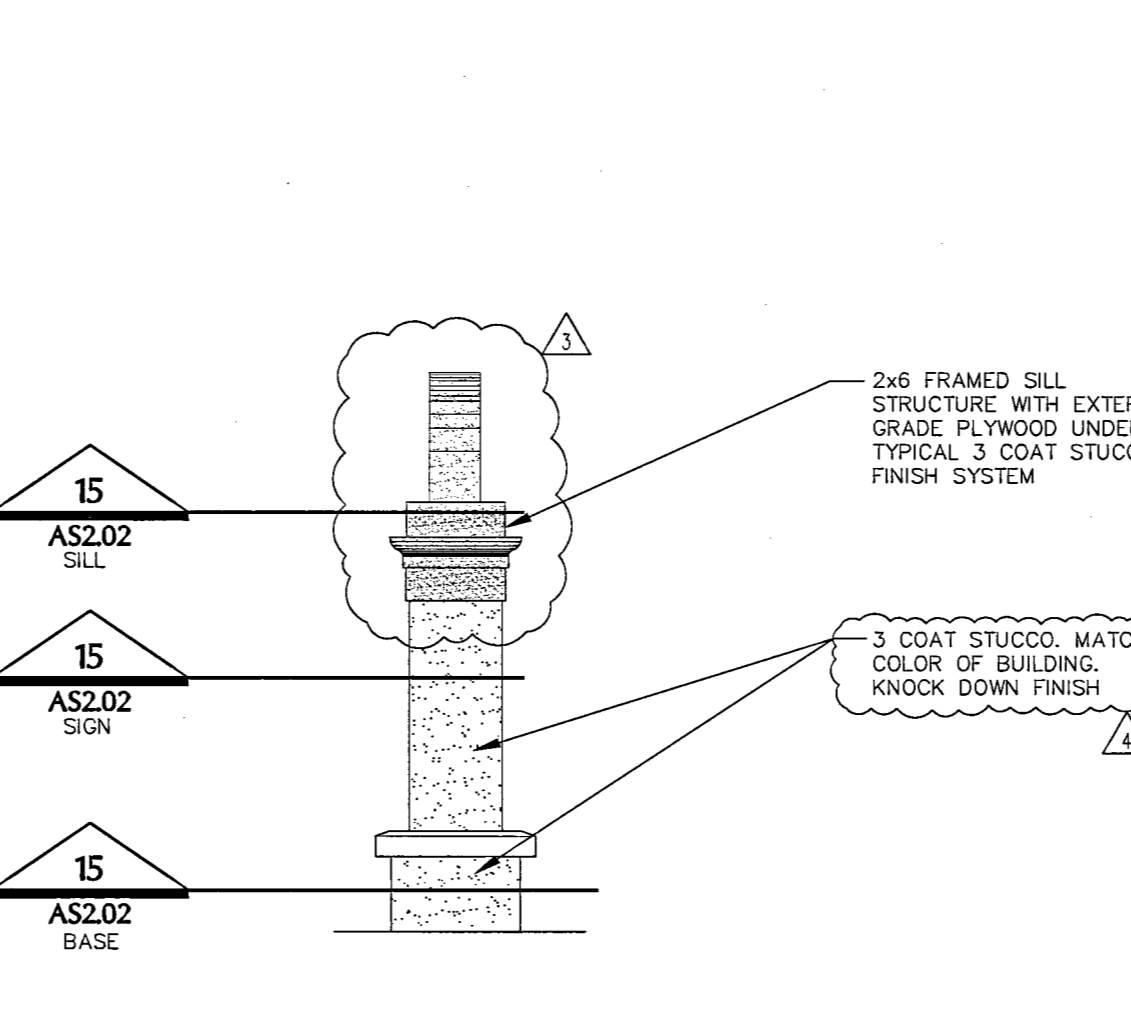
**BUS SHELTER ROOF DIAGRAM** 4  
SCALE: 1/4" = 1'-0" 723-SD47.dwg



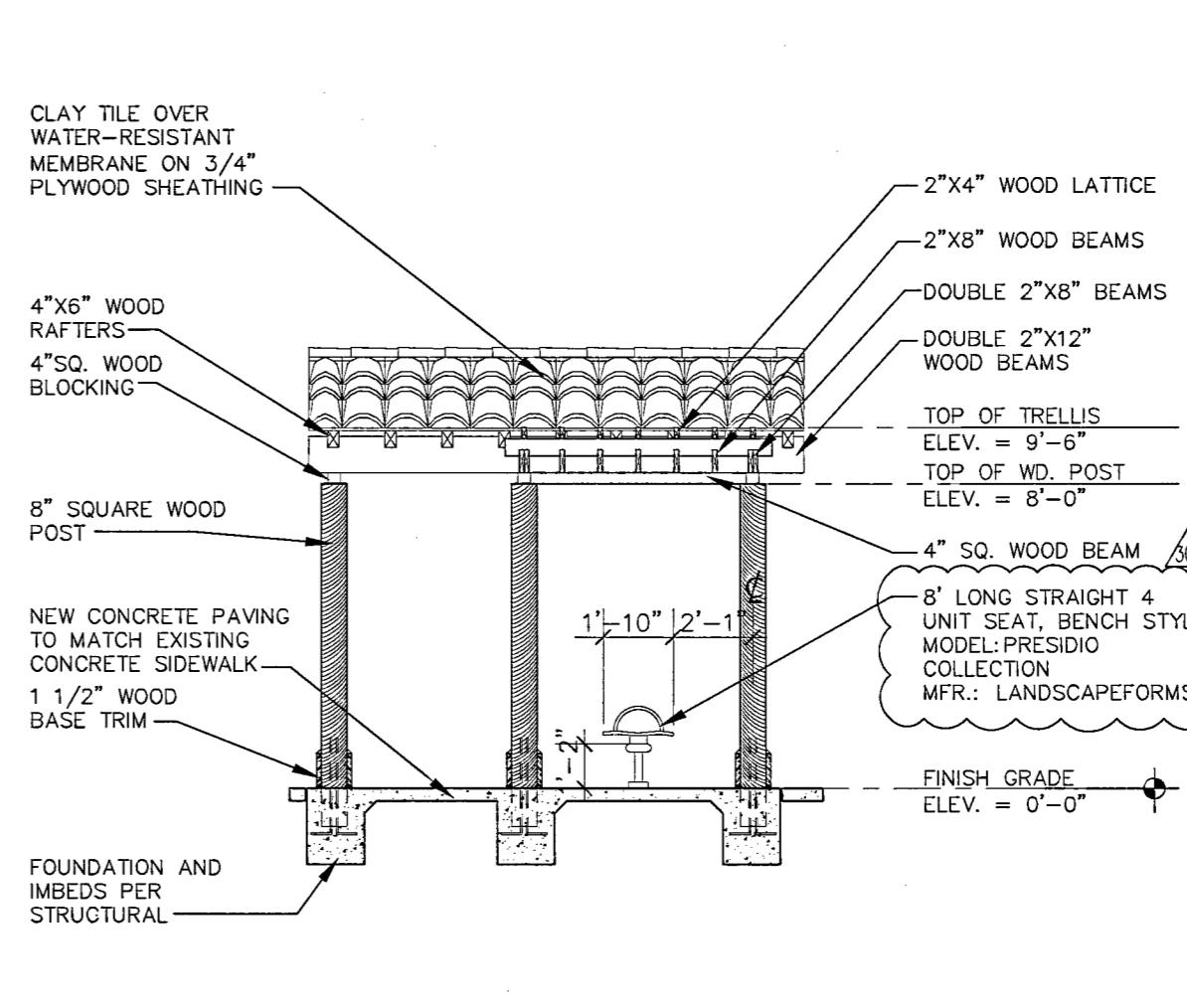
**MONUMENT PLAN** 15  
SCALE: 1/2" = 1'-0" 723-SD22



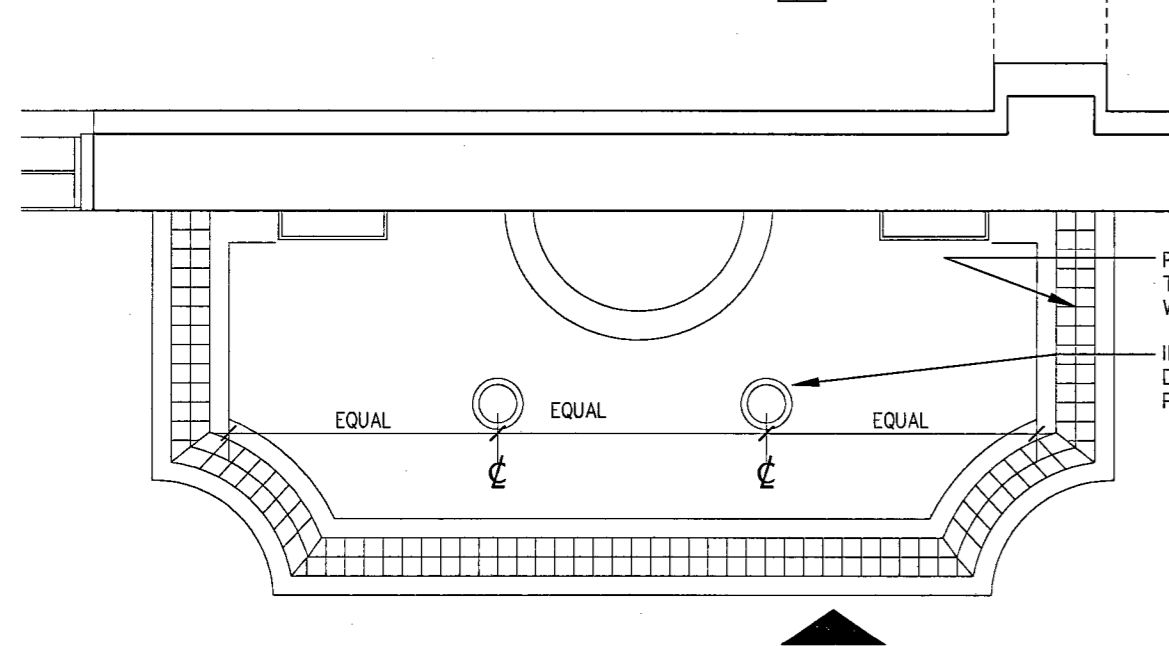
**MONUMENT ELEVATION** 11  
SCALE: 1/2" = 1'-0" 723-SD22



**MONUMENT ELEVATION** 7  
SCALE: 1/2" = 1'-0" 723-SD22



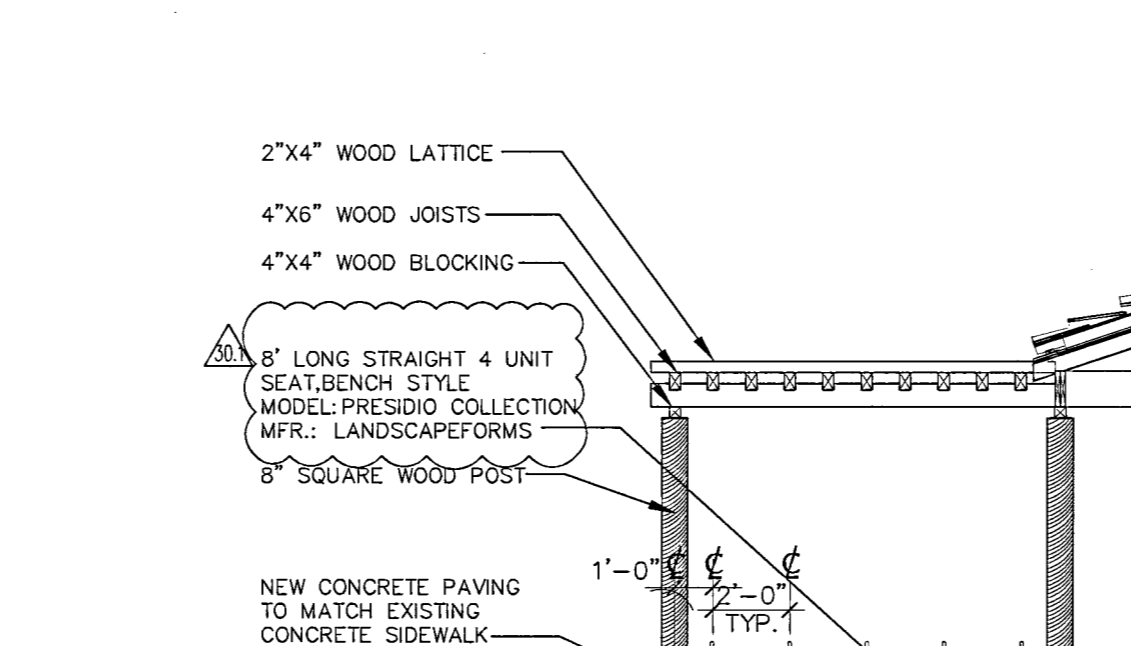
**BUS SHELTER SECTION-B** 3  
SCALE: 1/4" = 1'-0" 723-SD46.dwg



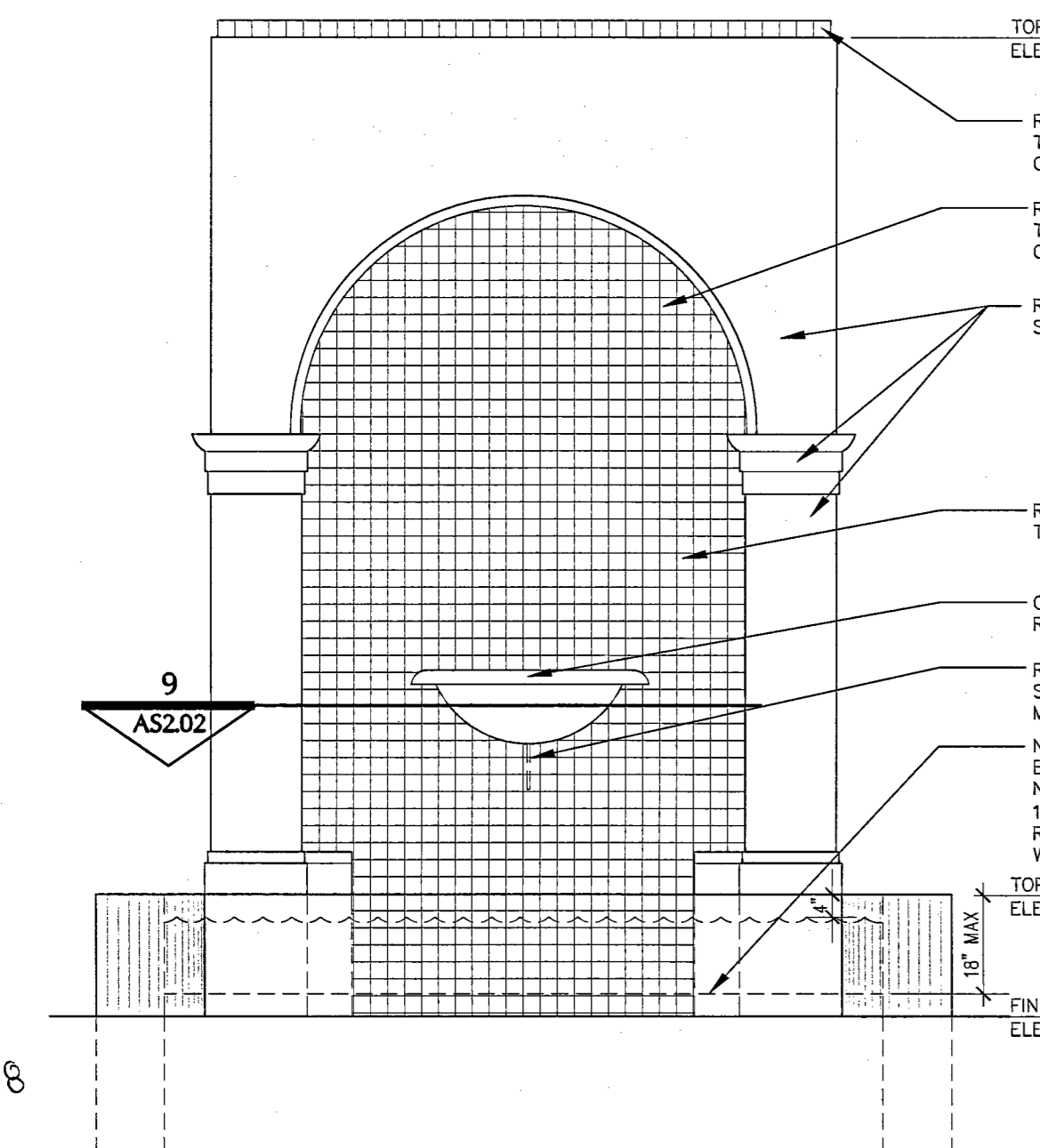
**ENLARGED FOUNTAIN PLAN** 14  
SCALE: 1/2" = 1'-0" 723-SD22



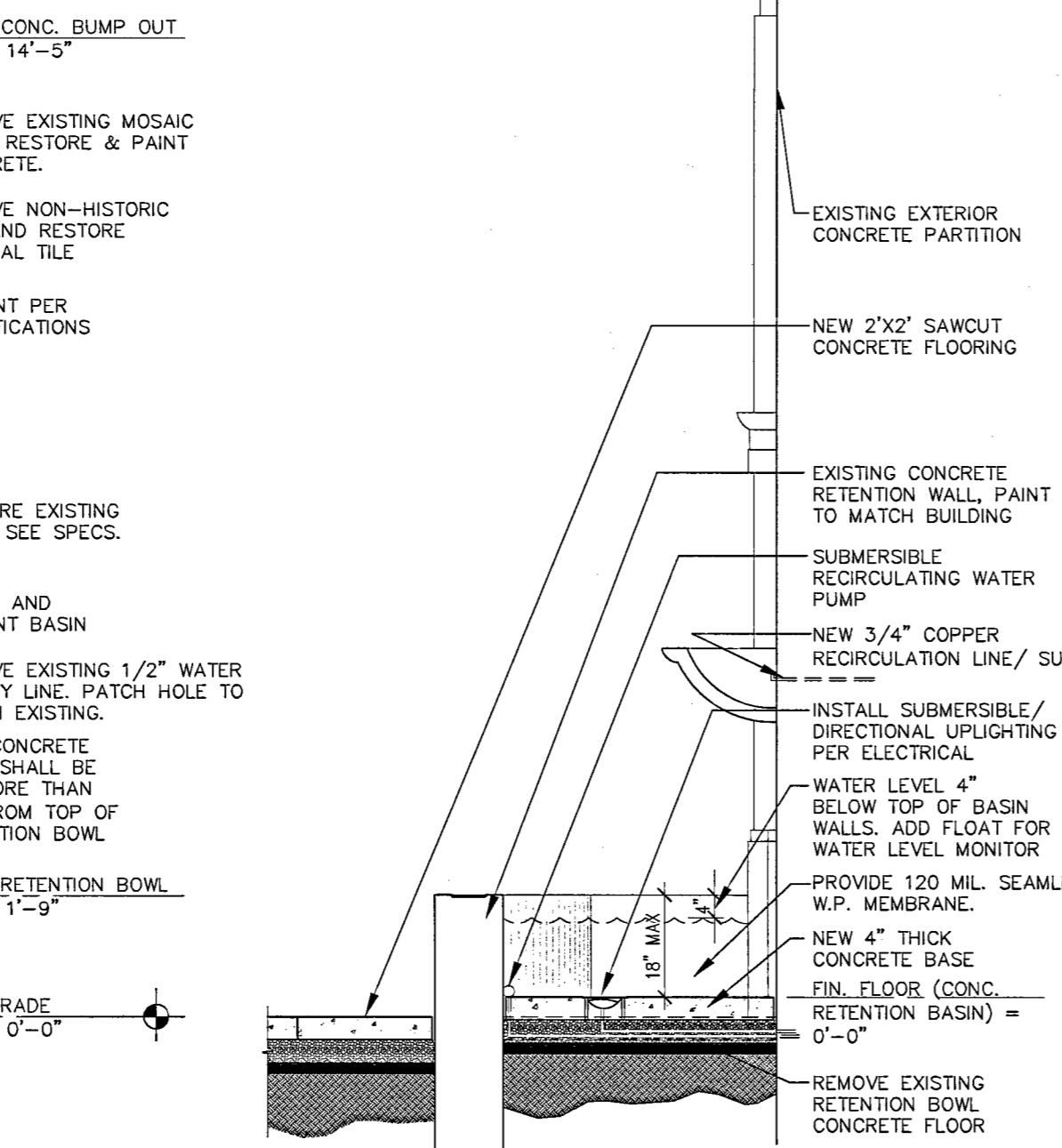
**MONUMENT ELEVATION** 11  
SCALE: 1/2" = 1'-0" 723-SD22



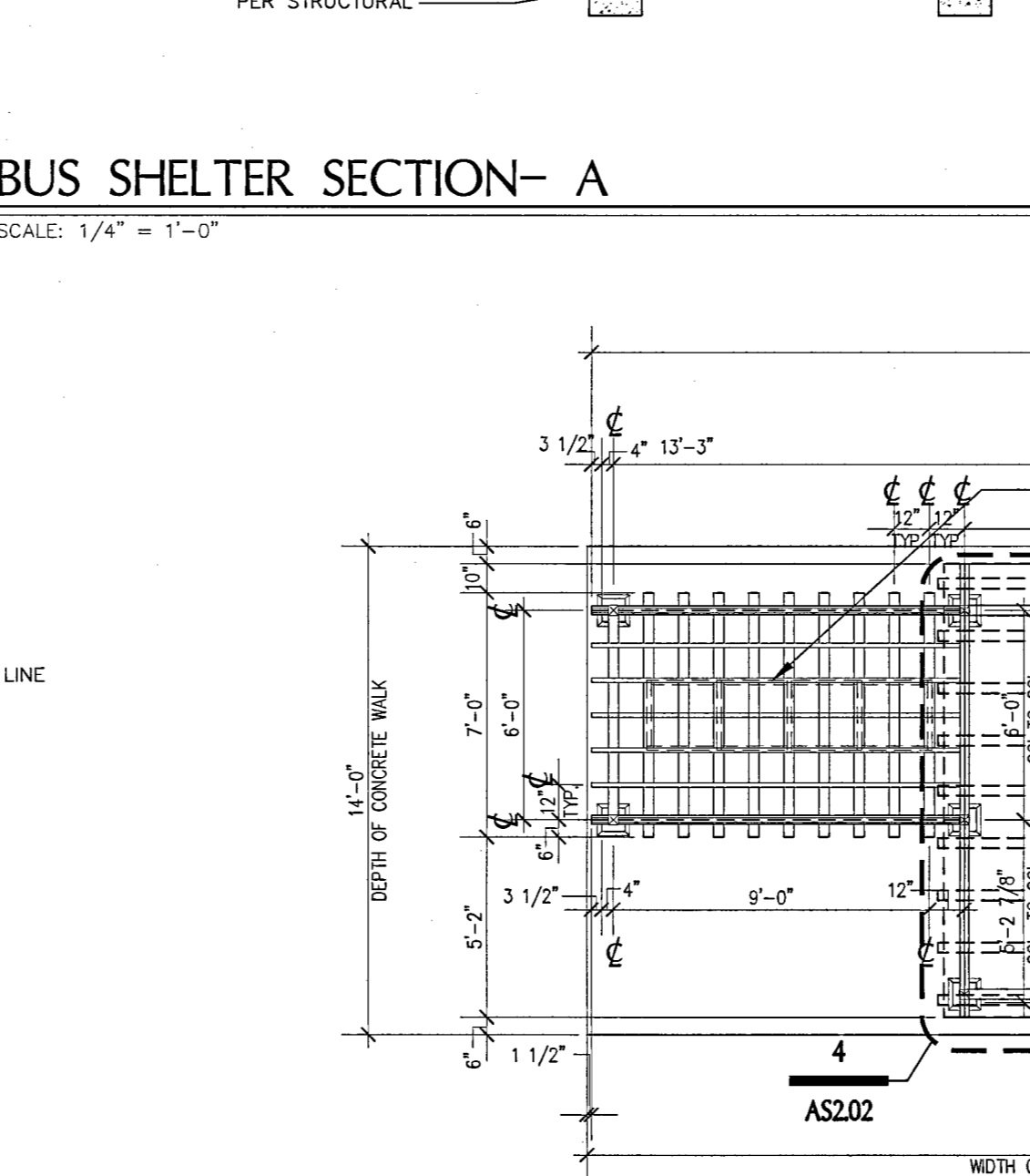
**BUS SHELTER SECTION-A** 2  
SCALE: 1/4" = 1'-0" 723-SD45.dwg



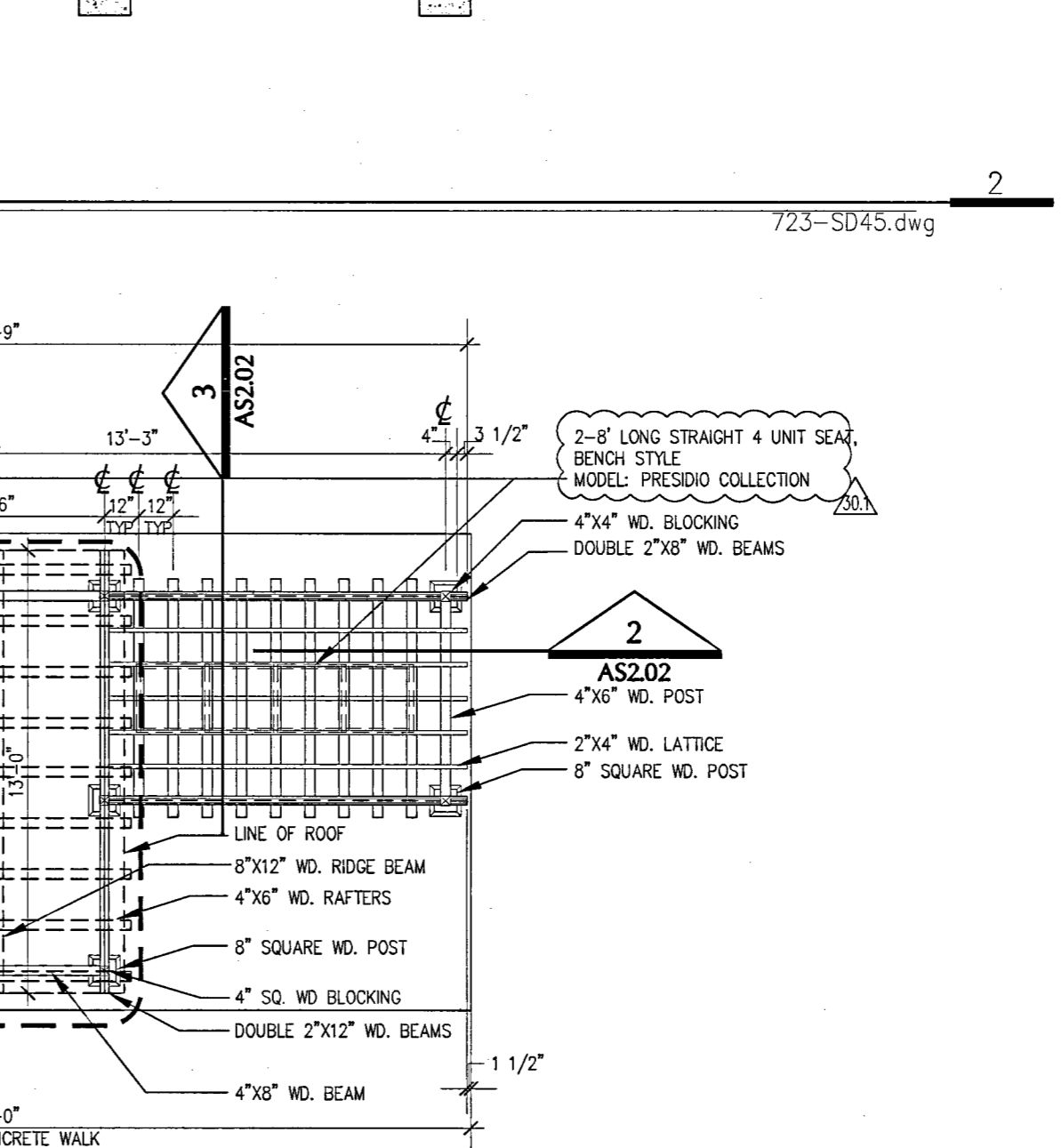
**ENLARGED FOUNTAIN ELEVATION** 13  
SCALE: 1/2" = 1'-0" 723-SD22



**FOUNTAIN SECTION** 9  
SCALE: 1/2" = 1'-0" 723-SD49.dwg



**ENLARGED BUS SHELTER FRAMING PLAN** 1  
SCALE: 1/4" = 1'-0" 723-SD21.dwg



**BUS SHELTER SECTION-B** 3  
SCALE: 1/4" = 1'-0" 723-SD46.dwg

CLV COMMENTS  
 OWNER COMMENTS  
 OWNER COMMENTS  
 ARCHITECT  
 HERITAGE ARCHITECTURE & PLANNING  
 CIVIL  
 VTN  
 NEVADA  
 STRUCTURAL  
 BARKER DROTTER ASSOCIATES  
 STRUCTURAL ENGINEERS  
 MECHANICAL - PLUMBING - ELECTRICAL - LIFE SAFETY - ACoustical - GENERAL LIGHTING  
 JBA CONSULTING ENGINEERS  
 STAGE LIGHTING & DESIGN - CDM LIGHTING DESIGN GROUP  
 LANDSCAPE  
 JWZINNO & ASSOCIATES  
 COST ESTIMATING - RIBEN HUNT  
 LEVETT & BAILEY  
 ADA ACCESSIBILITY  
 ENDELMAN AND ASSOCIATES  
 CITY OF LAS VEGAS REDEVELOPMENT AGENCY  
 FIFTH STREET SCHOOL REHABILITATION BUILDING DEPARTMENT SUBMITTAL  
 RECORD DRAWINGS  
 OWNER: CITY OF LAS VEGAS  
 DEPARTMENT OF PUBLIC WORKS ARCHITECTURAL SERVICES  
 400 EAST STEWART AVENUE  
 LAS VEGAS, NEVADA 89103  
 PHONE: (702) 259-6235  
 FAX: (702) 384-4846  
 TDD: (702) 386-9438  
 DATE: 12/12/2006  
 SCALE: AS SHOWN  
 SHEET NO. 513-65E  
 AS2.02