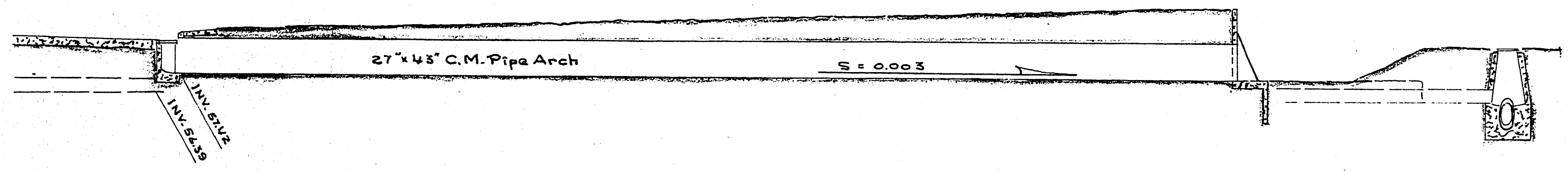
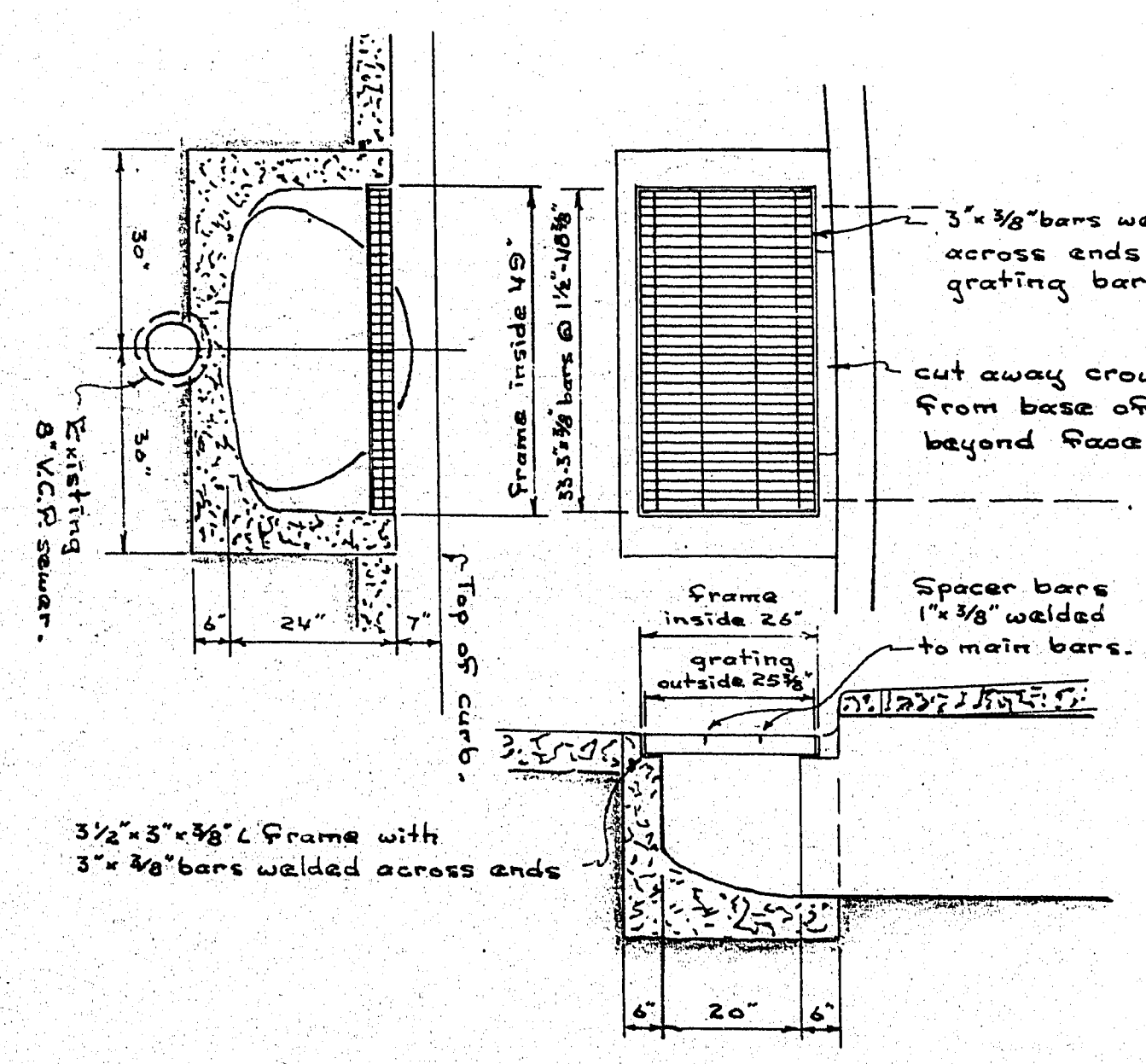


PROFILE
Hor. Scale 1 inch = 10 feet Vert. Scale 1 inch = 5 feet



Excavate 18 ft. of sewer and backfill with not less than 6" of concrete over the top and sides to the bed plane.



DETAIL OF INLET STRUCTURE
Scale 1 inch = 2 feet

3" x 3/8" bars welded across ends of grating bars.

cut away crown of culvert from base of grating and beyond face of curb.

Spacer bars 1" x 3/8" welded to main bars.

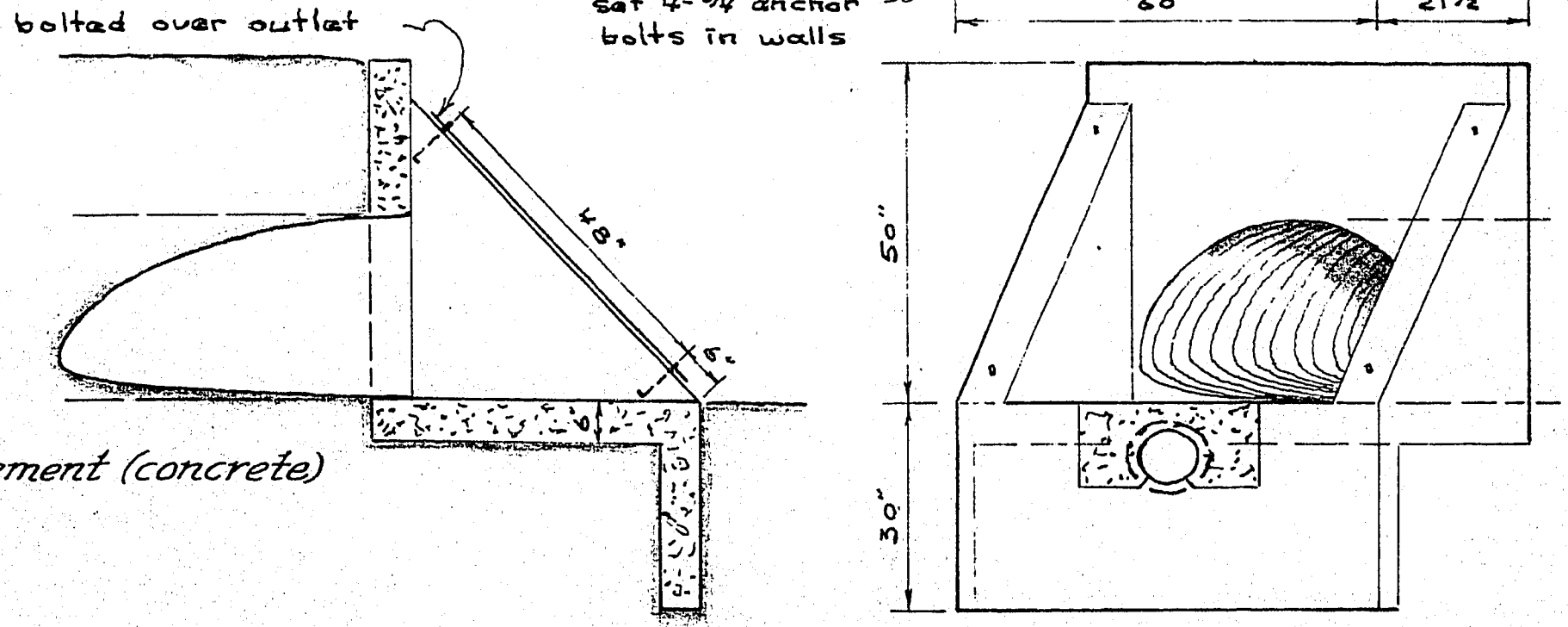
3/2 x 3 x 3/8" L frame with 3/8" bars welded across ends

Approved, Subject to possible encasement (concrete) of sanitary sewer.

G.E. Wade
G. E. Wade
Director of Public Works

1/2 x 1/2 x 6 Ga x 6 Ga. wire screen 60" x 54" bolted over outlet

set 4-3/4" anchor bolts in walls



DETAIL OF OUTLET STRUCTURE
Scale 1 inch = 2 feet.

NOTE
All concrete reinforced with 6" x 6" x 10 Ga x 10 Ga welded wire mesh.

APPROVED AS TO DESIGN ONLY
Contractor will be responsible for all details, dimensions and conformity to the design drawings.
Date 5-25-56
By: *H.C.H.*

C.M. PIPE ARCH TO DRAIN
INTERSECTION - 18TH ST & McWILLIAMS AVE.
DRAINAGE AREA 9 ACRES ±