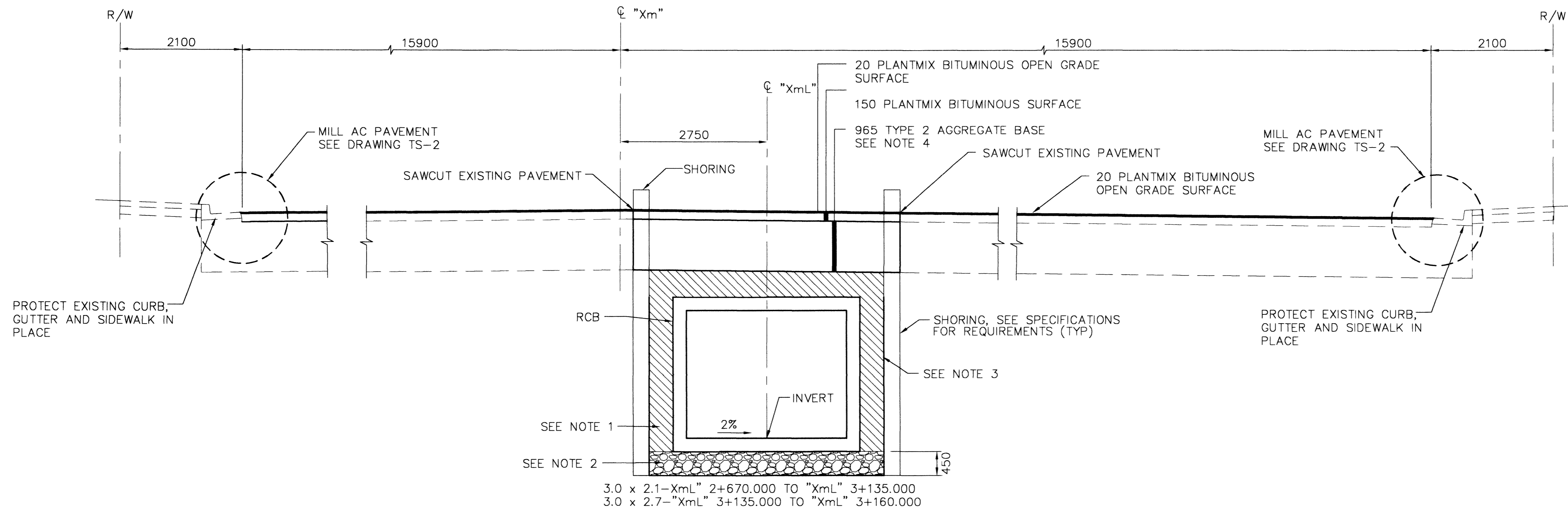
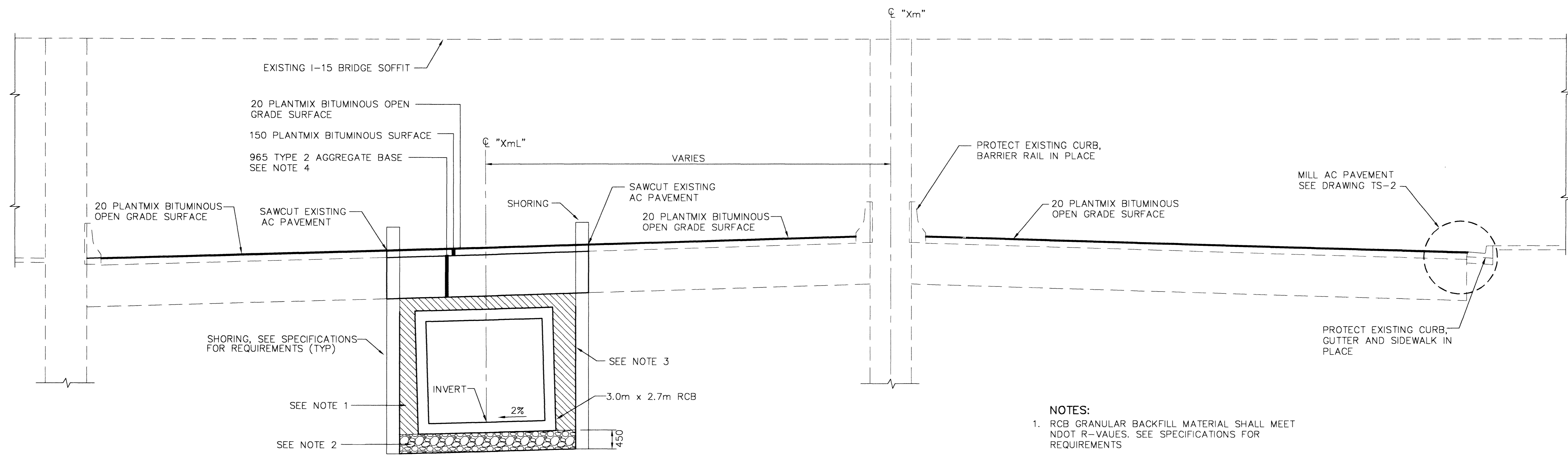


ALL DIMENSIONS ARE IN MILLIMETERS UNLESS OTHERWISE NOTED.



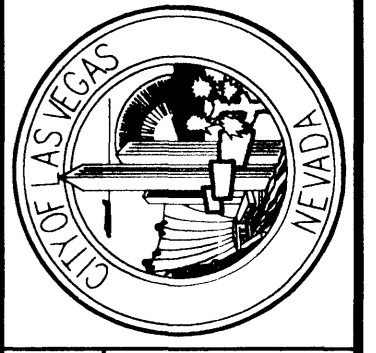
CHARLESTON BOULEVARD
 "XmL" 2+670.000 TO "XmL" 3+160.000
 SEE DRAWING C-39 THRU C-42



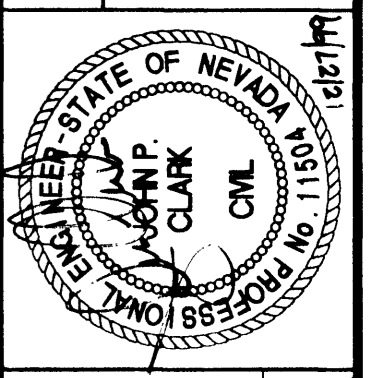
CHARLESTON BOULEVARD
 "XmL" 3+160.000 TO "XmL" 3+227.353
 SEE DRAWING C-42

- NOTES:
1. RCB GRANULAR BACKFILL MATERIAL SHALL MEET NDOT R-VALUES. SEE SPECIFICATIONS FOR REQUIREMENTS
 2. BEDDING TO BE COMPACTED TO 95% PER ASTM D1557. SEE SPECIFICATIONS FOR REQUIREMENTS
 3. SEE SPECIFICATIONS FOR GEOTEXTILE REQUIREMENTS
 4. TYPE 2 AGGREGATE TO BE COMPACTED TO 95% PER ASTM D1557. SEE SPECIFICATIONS FOR REQUIREMENTS

DATE	
REVISIONS	
PROJECT #	31604
DESIGN BY	DSP
DATE	DECEMBER 17, 1999
SCALE (V)	N/A
SCALE (H)	N/A
FLD. BK. #	N/A



DEPARTMENT OF PUBLIC WORKS
 I-15 FREEWAY CHANNEL
 TYPICAL SECTIONS



DRAWING No. 15
 TS-10 241

METRIC

327-V254

L:\31604\SHITS\TS-10.DWG KOECHLEY 12/22/99 15:1