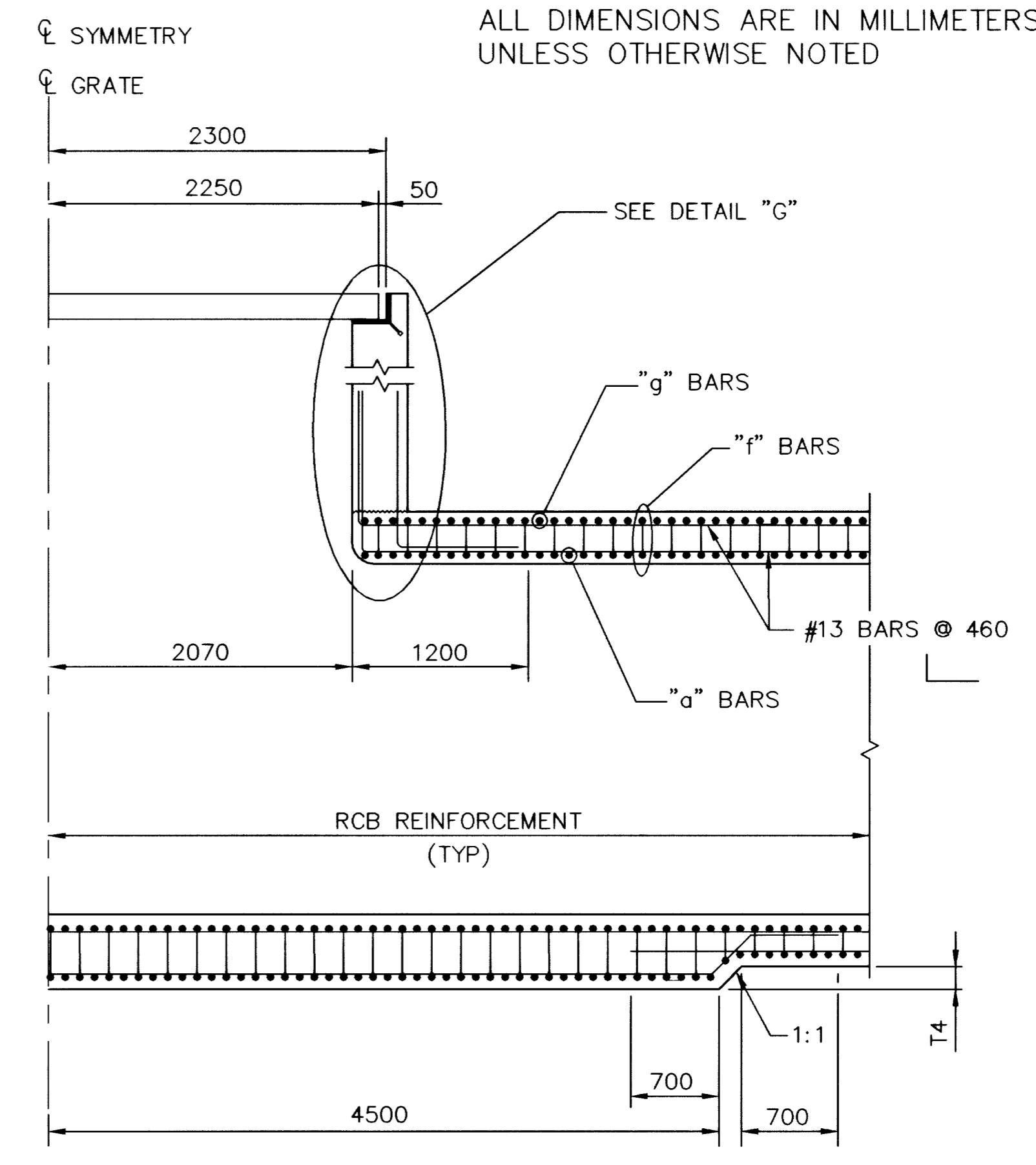
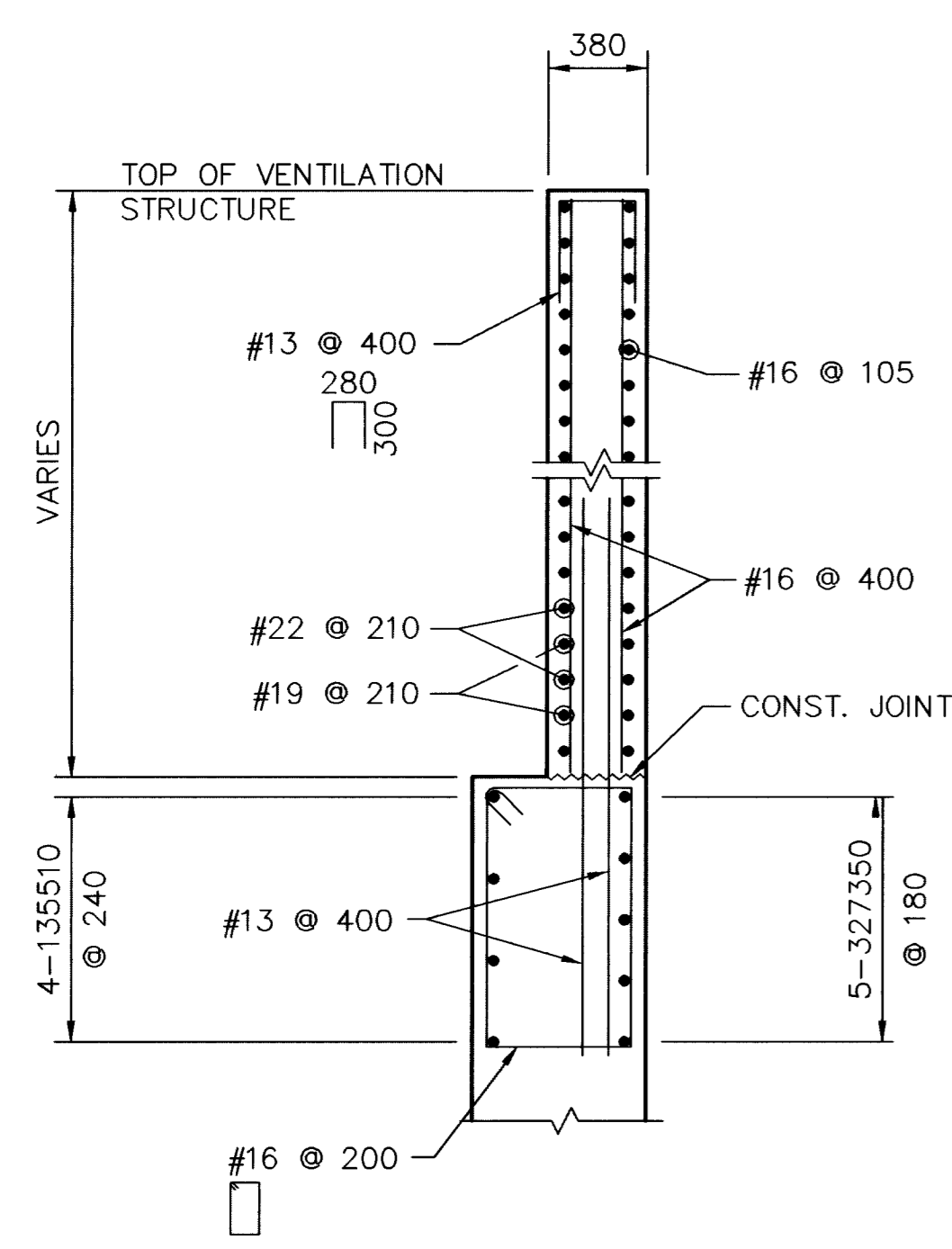


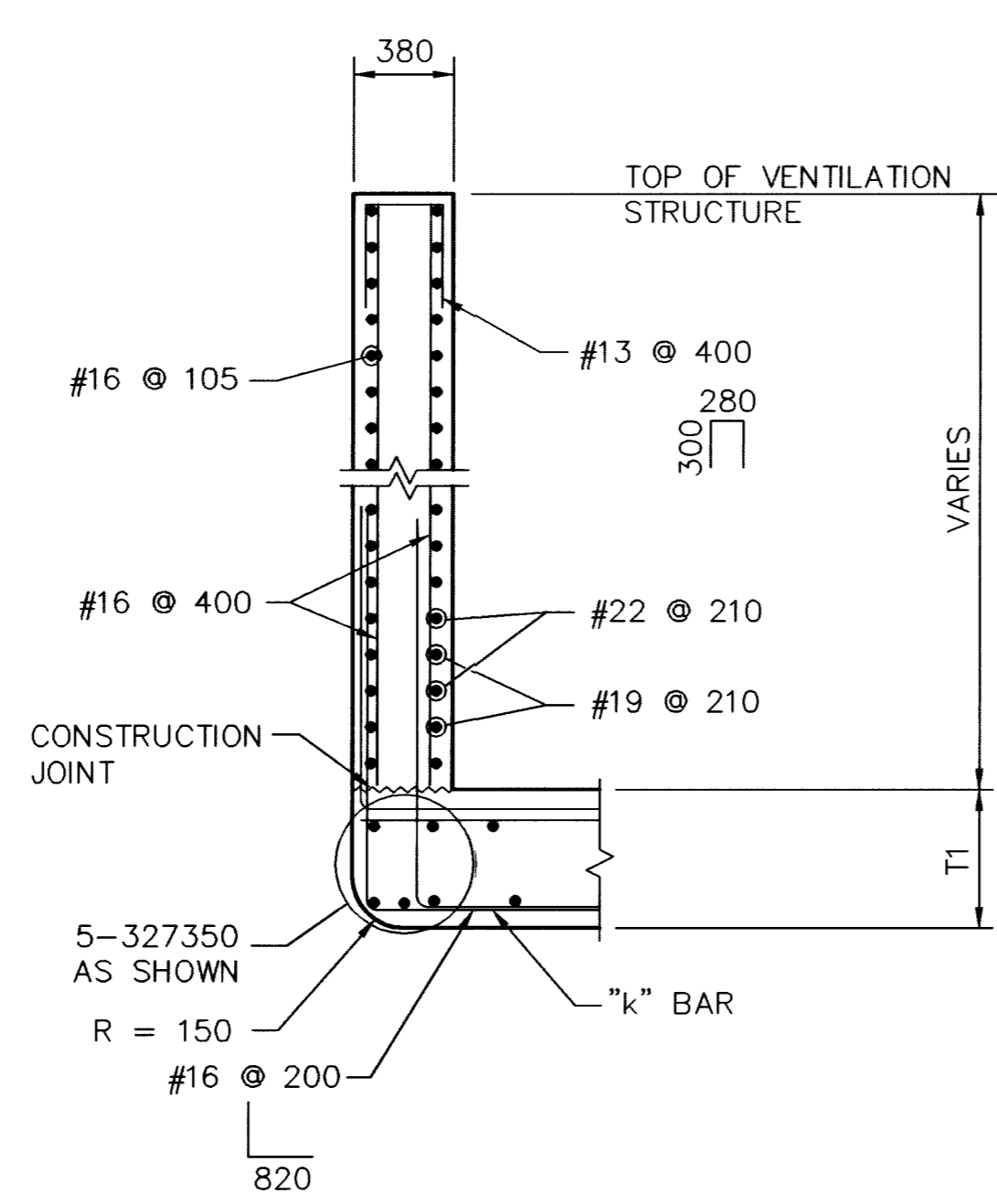
SECTION A-A



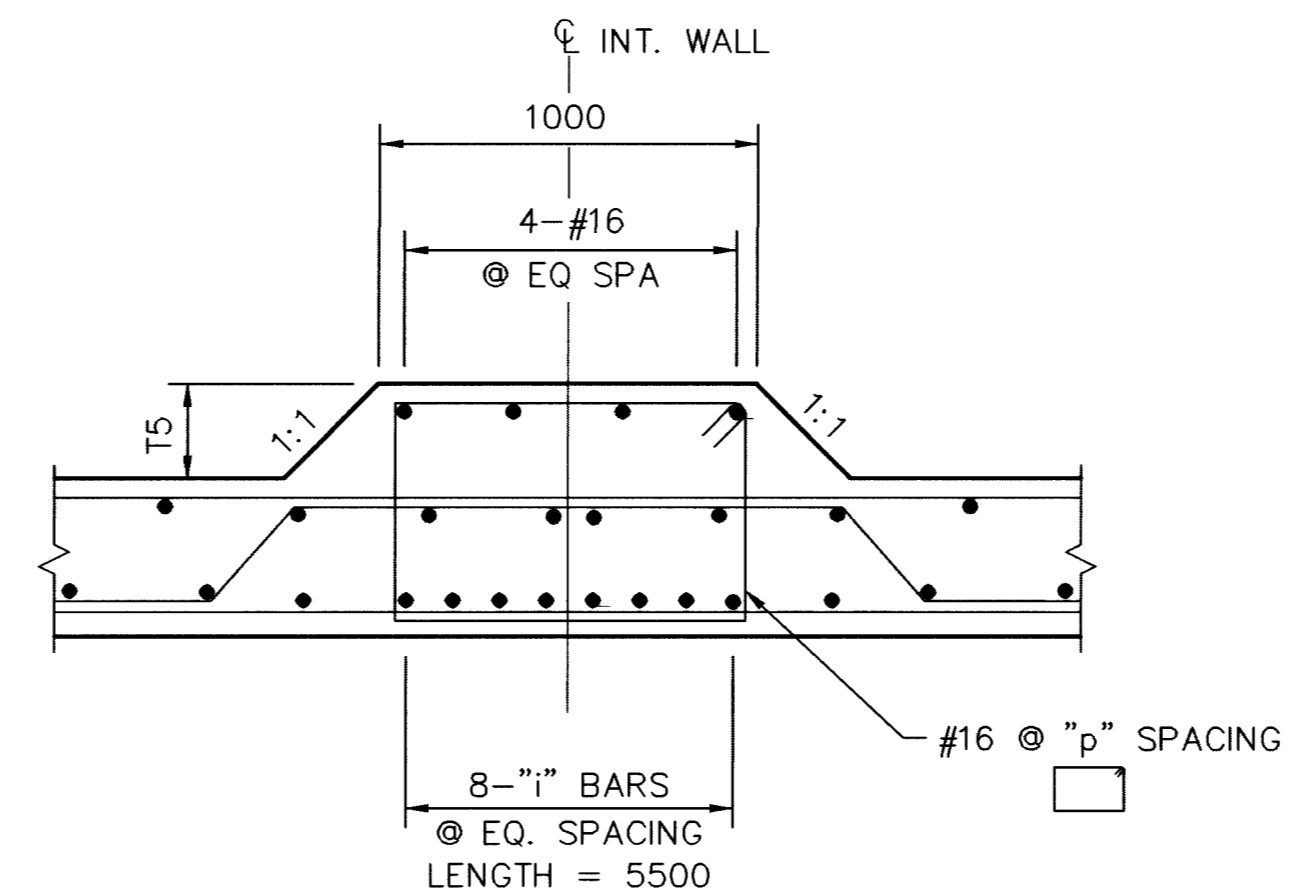
SECTION B-B



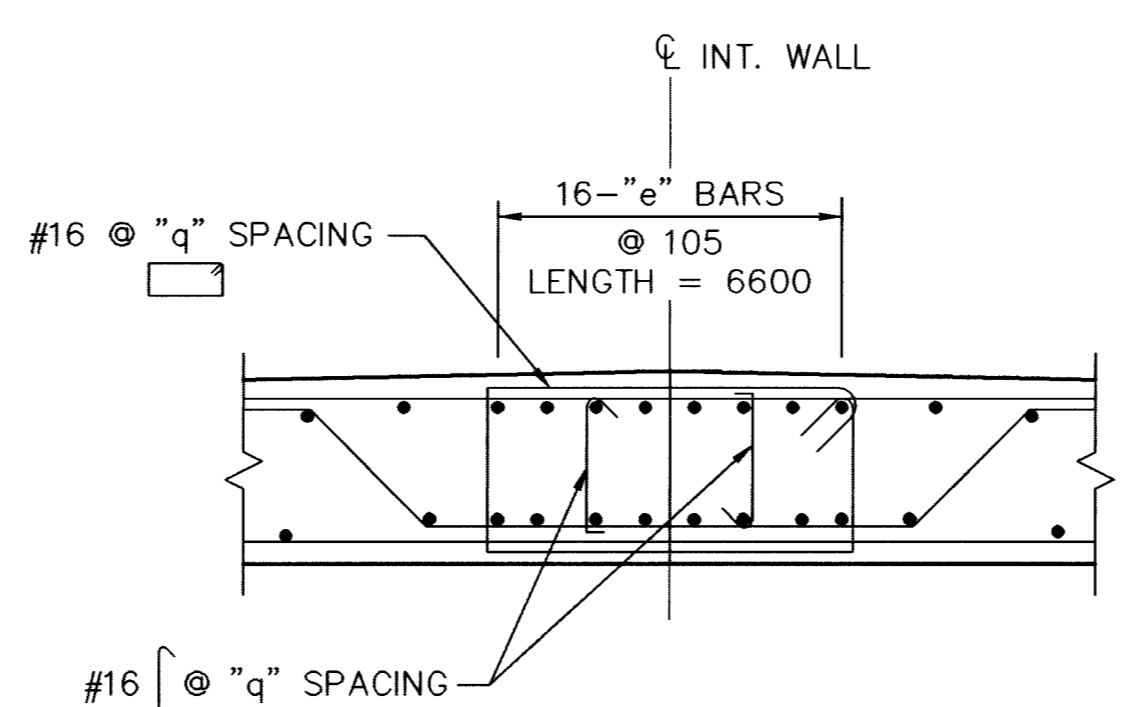
DETAIL "C"



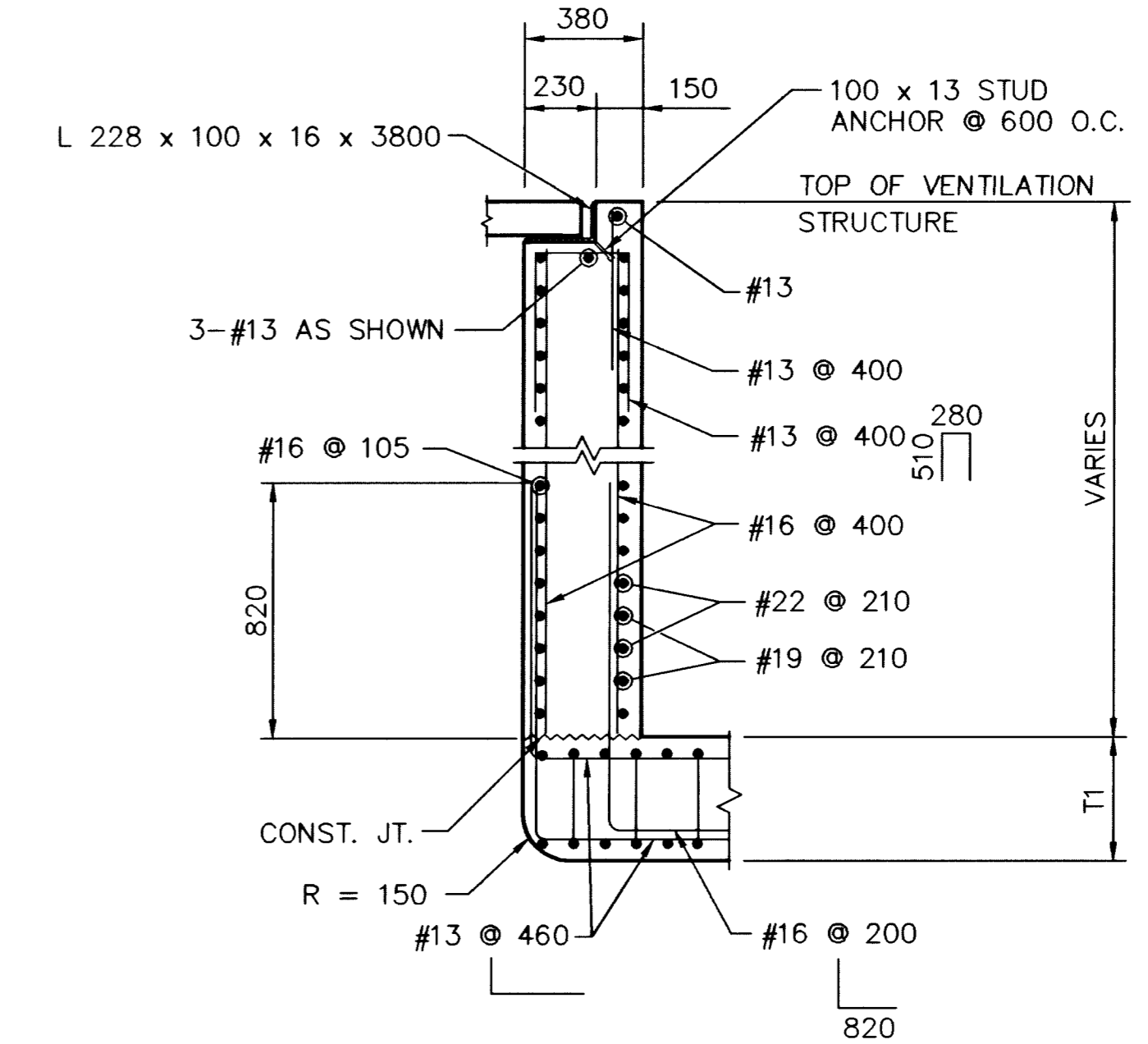
DETAIL "D"



DETAIL "E"



DETAIL "F"

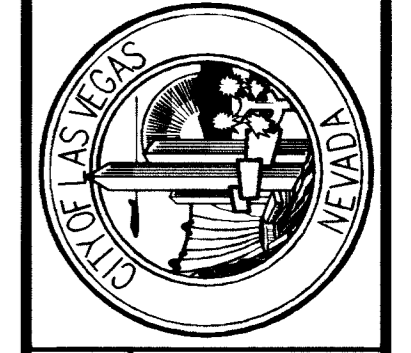


DETAIL "G"

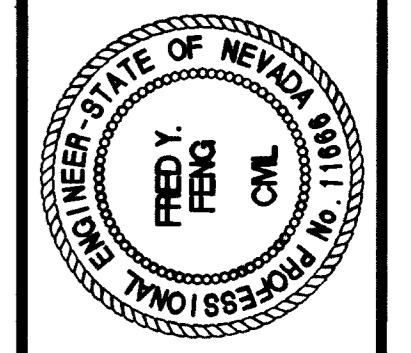
- NOTES:
1. FOR T1, T2 & T3 DIMENSIONS, SEE DRAWING S-2.
 2. "m" BAR IS SIMILAR TO "g" BAR IN SIZE AND SPACING.
"n" BAR IS SIMILAR TO "f" BAR IN SIZE AND SPACING.
"k" BAR IS SIMILAR TO "a" BAR IN SIZE AND SPACING.
 3. FOR A DISTANCE OF 1200mm FROM THE EDGE OF THE OPENING, THE MINIMUM SIZE OF "f" & "g" BARS AND THAT OF "a" BAR SHALL BE # 16.
 4. FOR "i" & "e" BARS, T4 & T5 DISTANCES & "p" & "q" SPACING, SEE TABLE ON DRAWING S-17.
 5. FOR STA 1+800,000, SECTION A-A SHOWN OPPOSITE HAND.

ALL DIMENSIONS ARE IN MILLIMETERS UNLESS OTHERWISE NOTED

DATE	4/20/03
REVISIONS	
RECORD DRAWING	
SCALE (H) AS SHOWN	N/A
SCALE (V) AS SHOWN	AS SHOWN
DATE	DEC 17, 1999
DESIGN BY	NR
PROJECT #	31604



DEPARTMENT OF PUBLIC WORKS
I-15 FREEWAY CHANNEL
ACCESS/VENTILATION STRUCTURE
SECTIONS AND DETAILS



DRAWING No. 152
S-18 241

RECORD DRAWING METRIC