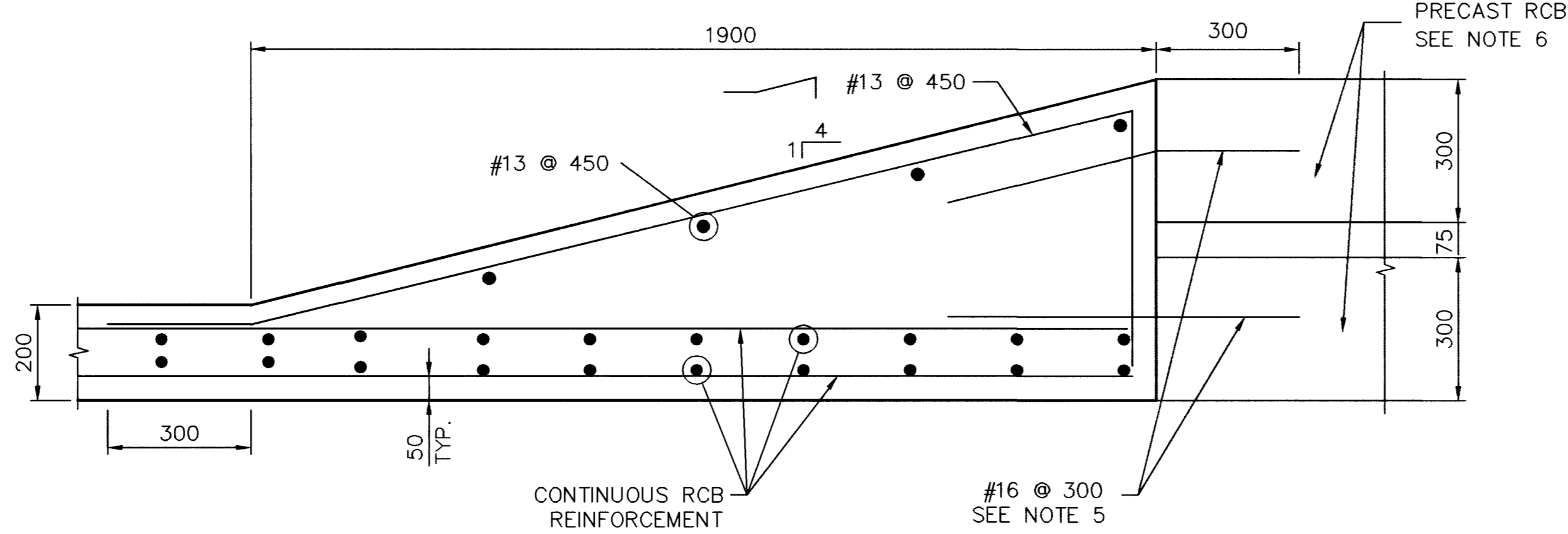


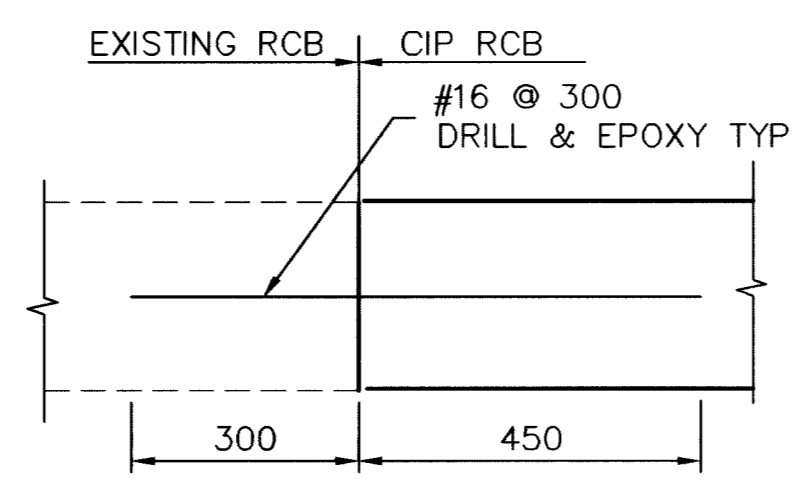
TRANSITION PLAN

#2 - "FC" 2+450.759, # 3 - "FC" 3+276.370



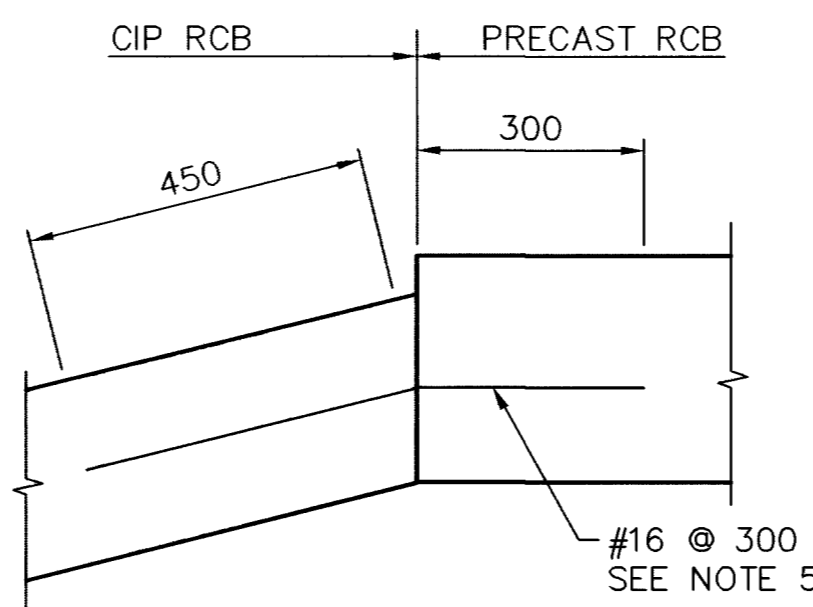
DETAIL "A"

SEE NOTE 3



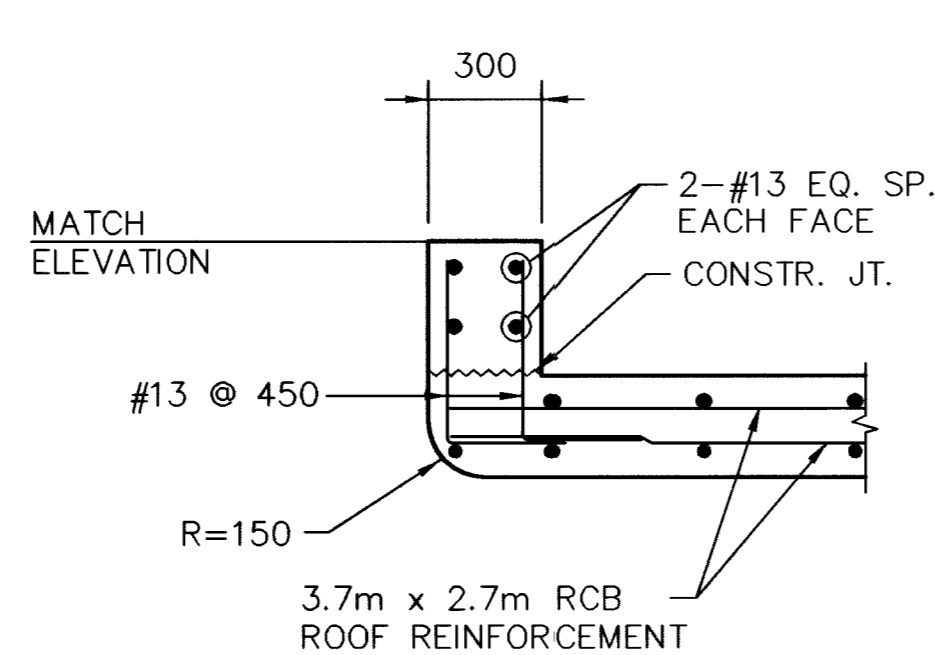
INVERT AND ROOF SIMILAR

DETAIL "D"



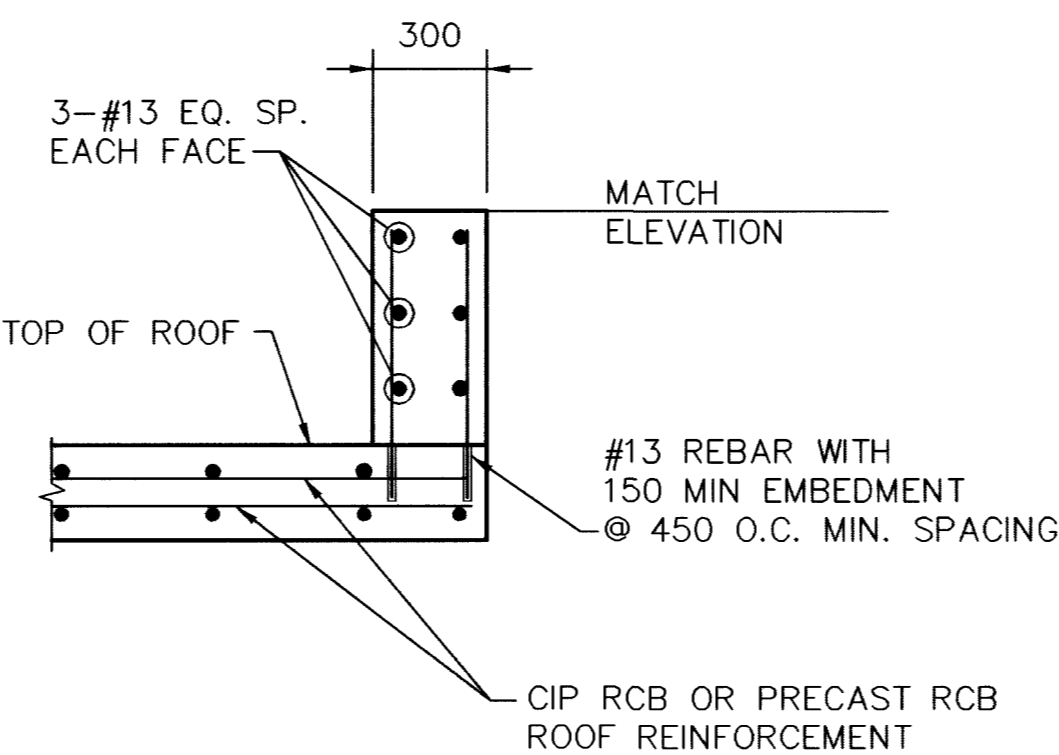
INVERT AND ROOF SIMILAR

DETAIL "B"



DETAIL "E"

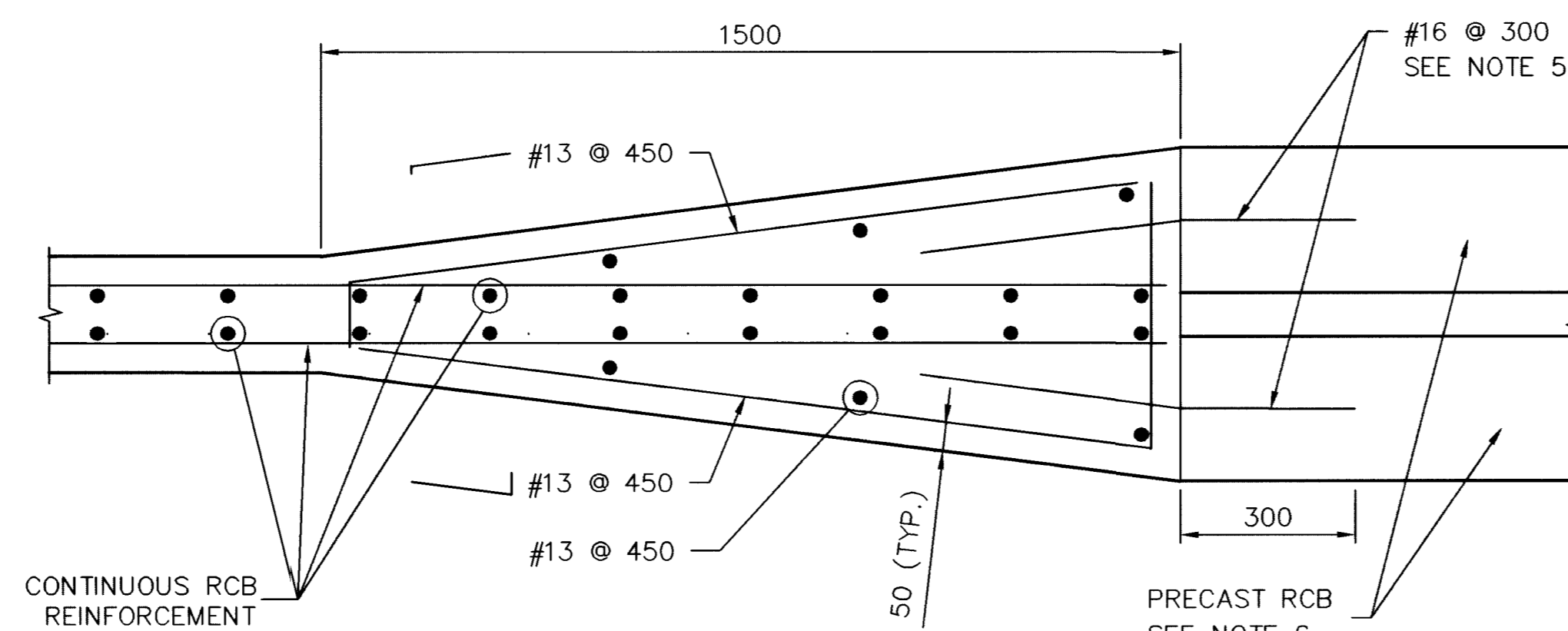
SEE NOTE 4



DETAIL "F"

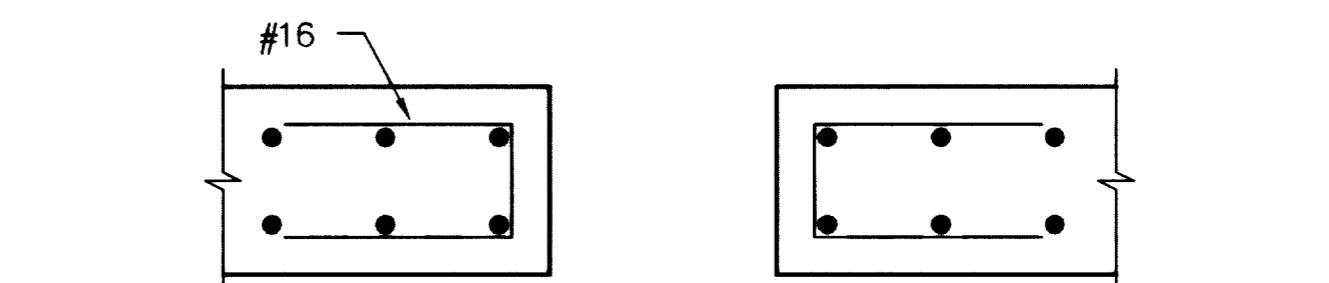
SEE NOTE 4

PARAPET WALL DETAIL

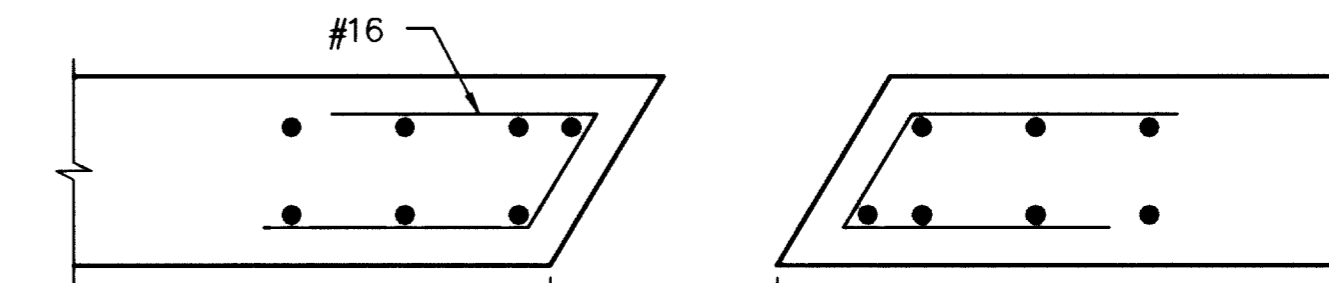


DETAIL "C"

ALL DIMENSIONS ARE IN MILLIMETERS UNLESS OTHERWISE NOTED



STRAIGHT ENTRY



SKEWED ENTRY

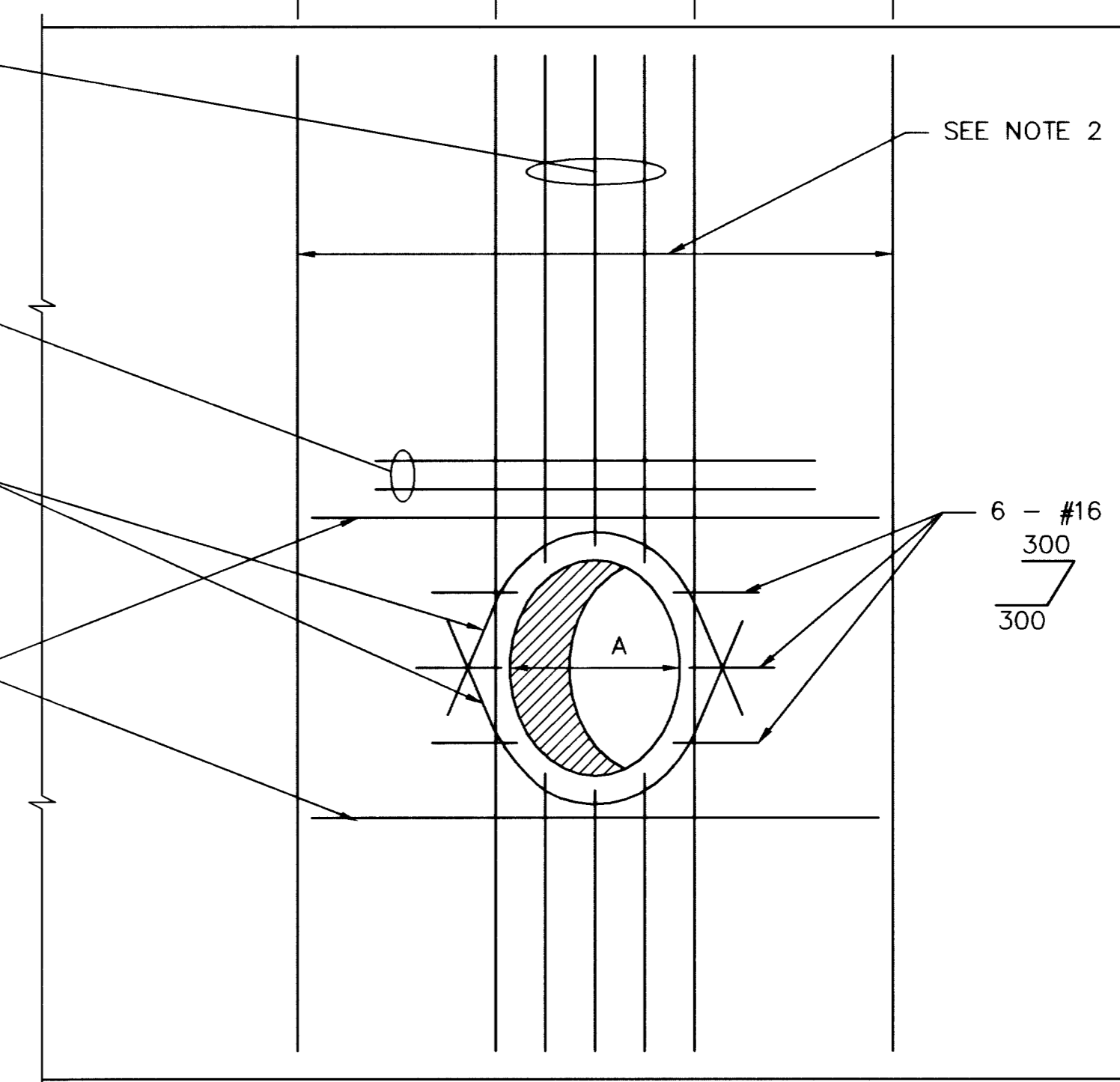
STANDARD REINFORCEMENT LIMITS OF SPECIAL REINFORCEMENT STANDARD REINFORCEMENT

STANDARD VERTICAL REINF. ABOVE AND BELOW OPENING (BOTH FACES).

#25 x A + 1200 TOT. 2 (BACK FACE ONLY) SEE NOTE 1.

2 - #25 E.F. TOTAL 4.

2 - #32 x A + 1500 E.F. TOTAL 4.

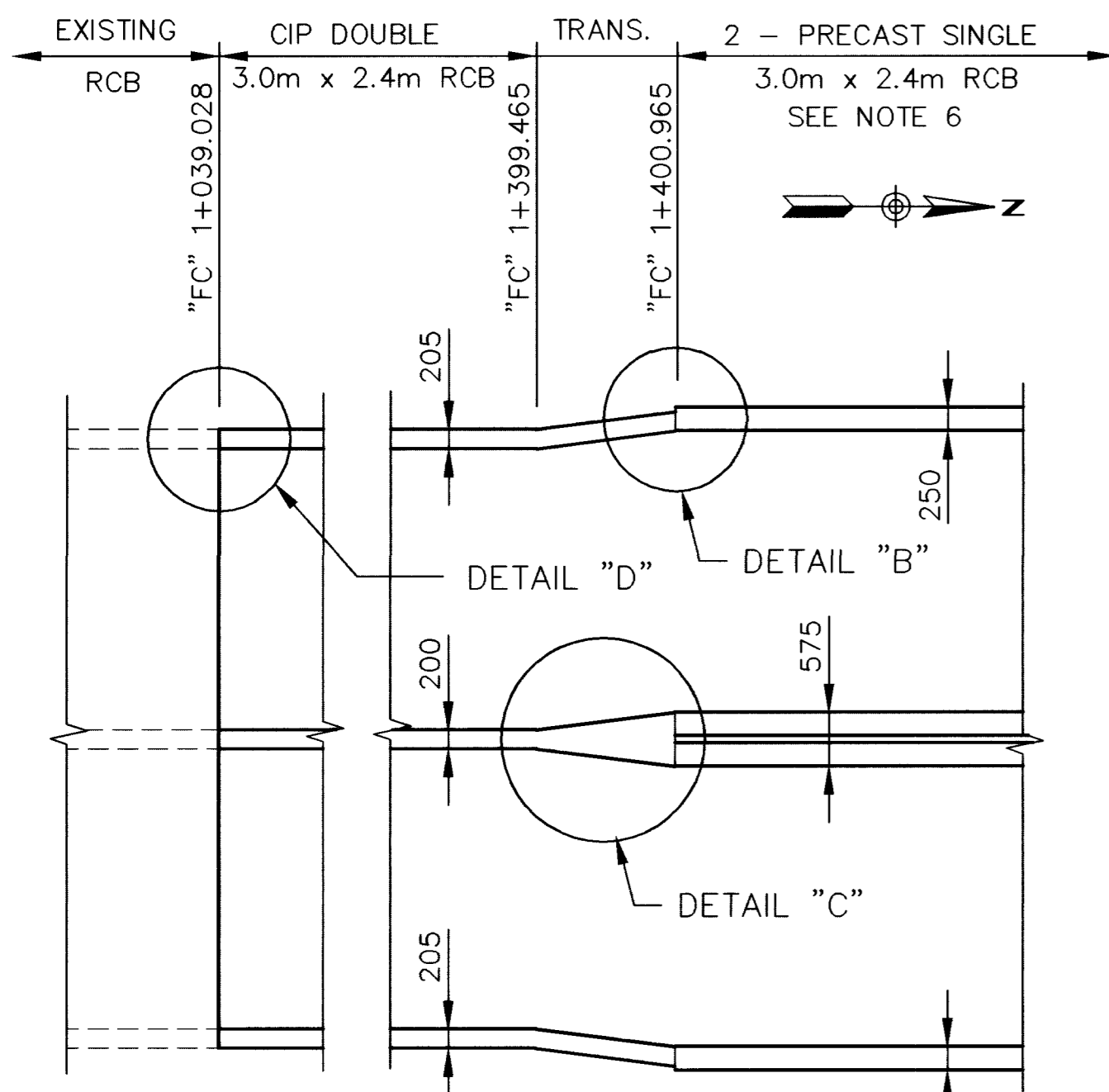


STORM PIPE OPENING DETAIL

SEE NOTE 9

NOTES:

- HORIZONTAL REINFORCING TO BE STANDARD EXCEPT AS SHOWN.
- STANDARD VERTICAL REINFORCING PLUS ADDITIONAL BARS CORRESPONDING IN SIZE AND NUMBER TO BARS CUT BY THE OPENING. PLACE HALF ON EACH SIDE. EXTEND THE BARS INTO THE FOOTING THE SAME AS OTHER WALL REINFORCEMENT AND TO A MIN. 60 BAR DIA. ABOVE THE TOP OF UTILITY OPENING IF WALL HEIGHT PERMITS. OTHERWISE BEND INTO TOP SLAB. BUNDLE BARS AS REQUIRED.
- FOR TRANSITION SECTION REINFORCEMENT DETAILS SEE NDOT STANDARD PLAN DRAWINGS B-20.1.3 AND B-20.1.3.1 AND USE THE CORRESPONDING SIZE AND COVER. ADDITIONAL BARS ARE REQUIRED AS SHOWN IN DETAILS "A", "B", "C" & "D".
- REFER TO CONSTRUCTION PLANS FOR TOP ELEVATIONS OF DETAILS "E" & "F".
- EMBED IN PRECAST RCB OR DRILL AND EPOXY.
- SEE NDOT STANDARD PLAN DRAWING B-20.1.8 FOR PRECAST RCB PLACEMENT DETAILS.
- ALL REINFORCING TO CLEAR OPENING BY 50mm MIN.
- EXPANSION JOINTS SHALL NOT BE LOCATED WITHIN THE LIMITS OF SPECIAL REINFORCING.
- USE A-LOK SEALING RING OR APPROVED EQUAL FOR ALL PVC TO CONCRETE RCB CONNECTIONS.

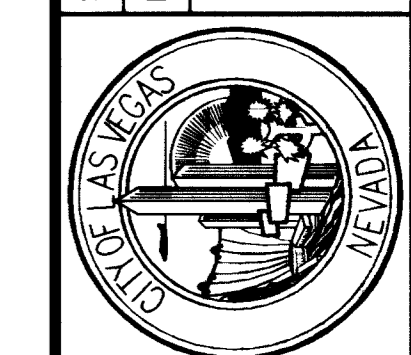


TRANSITION #1 PLAN

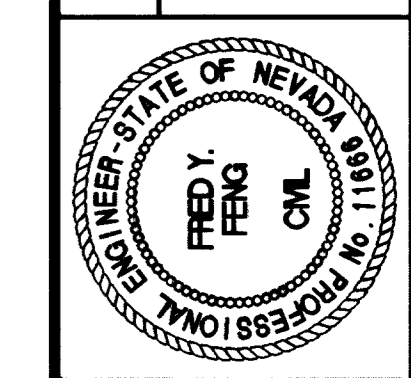
"FC" 1+039.028

DATE	4/20/03
REVISIONS	
RECORD DRAWING	

PROJECT #	31604
DESIGN BY	DSP
AS SHOWN DATE	DEC 17, 1999
SCALE (H)	N/A
SCALE (V)	AS SHOWN
FLD. BK. #	N/A



DEPARTMENT OF PUBLIC WORKS
I-15 FREEWAY CHANNEL
RCB CULVERT DETAILS
MISCELLANEOUS



DRAWING No.	137
S-3	241

RECORD DRAWING METRIC