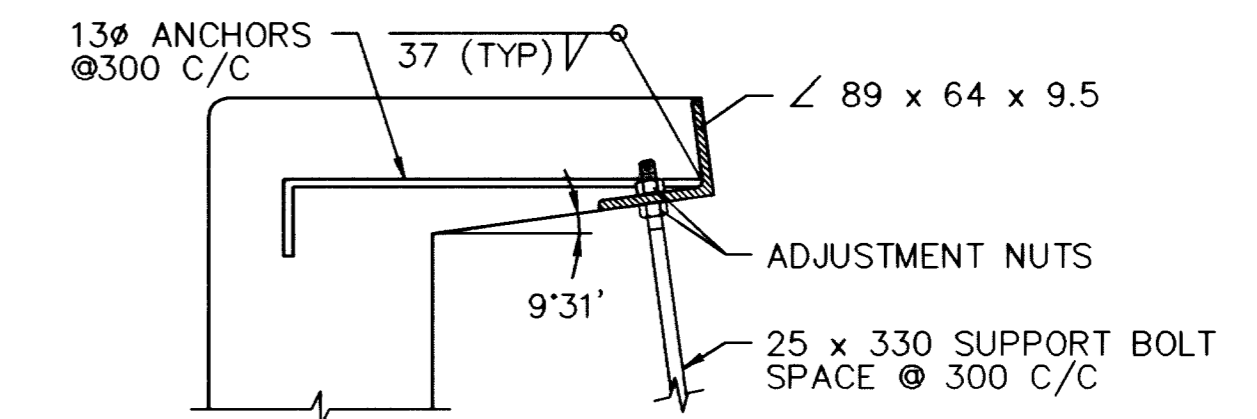
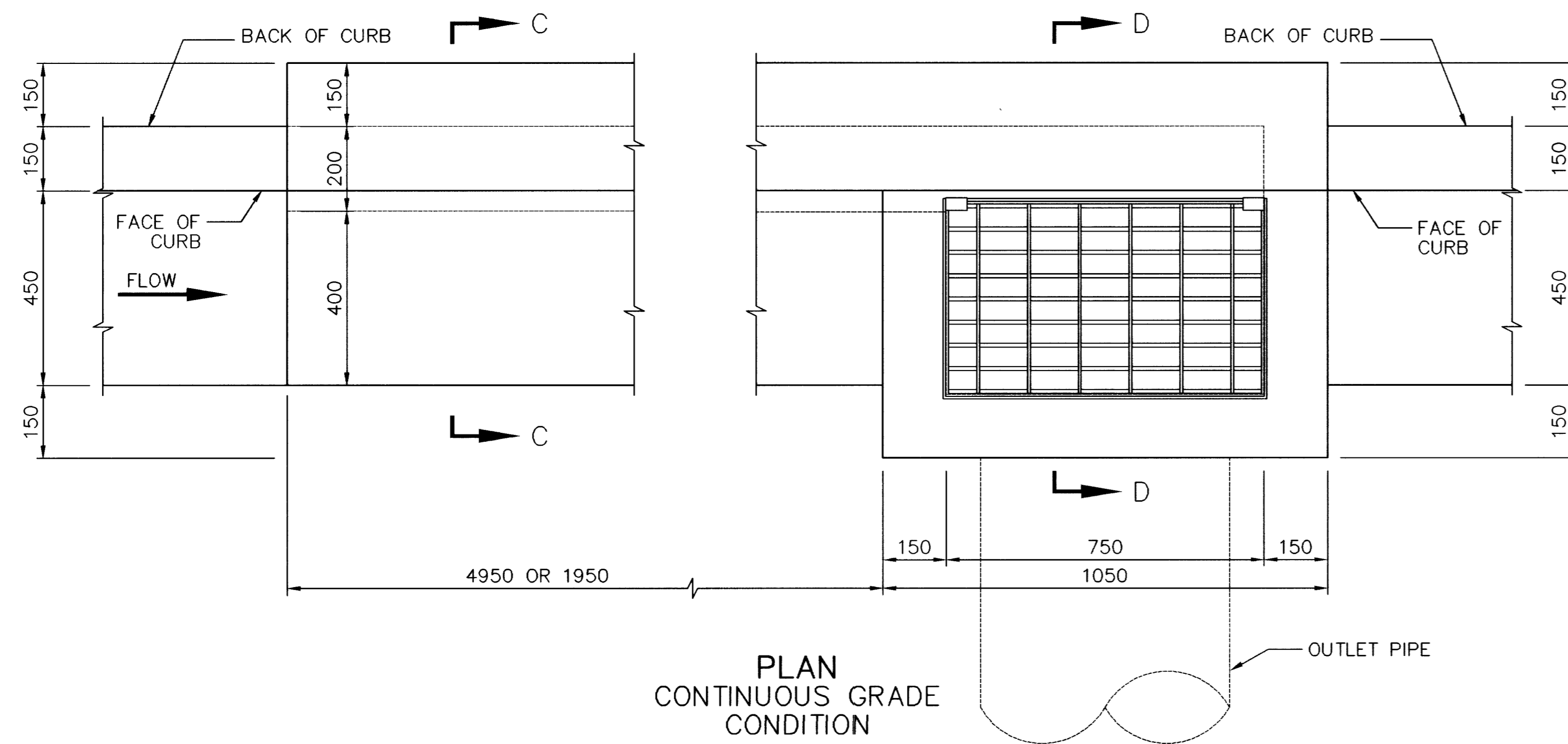
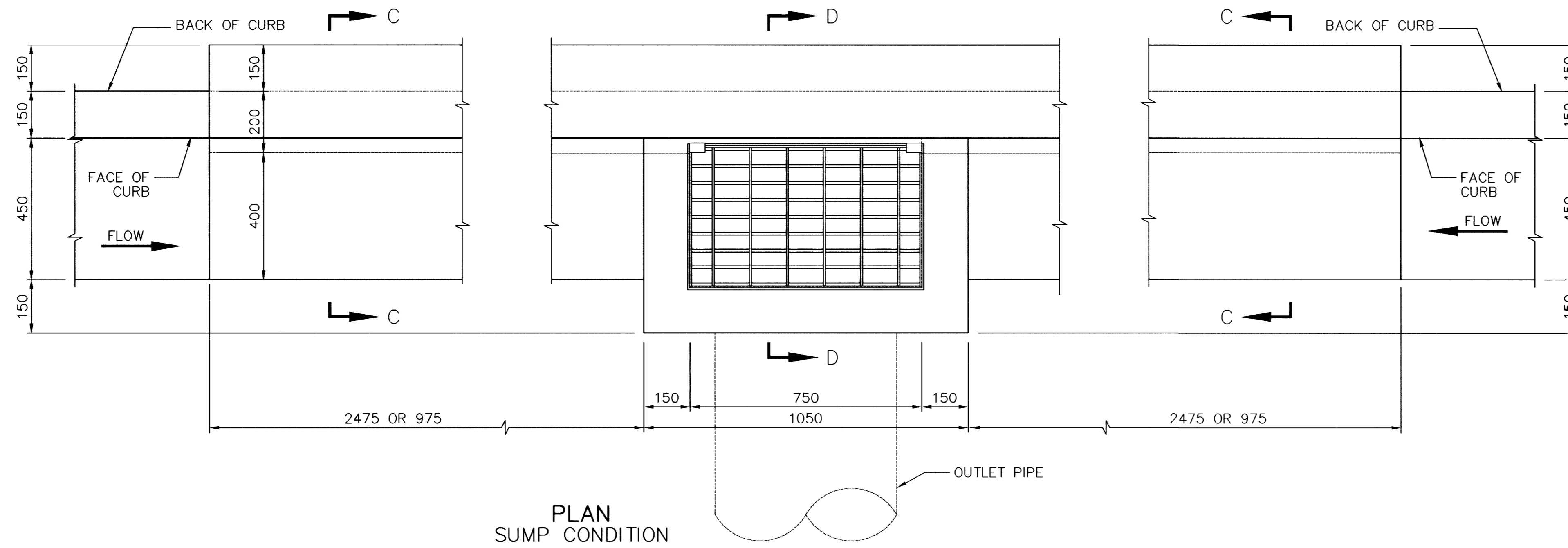


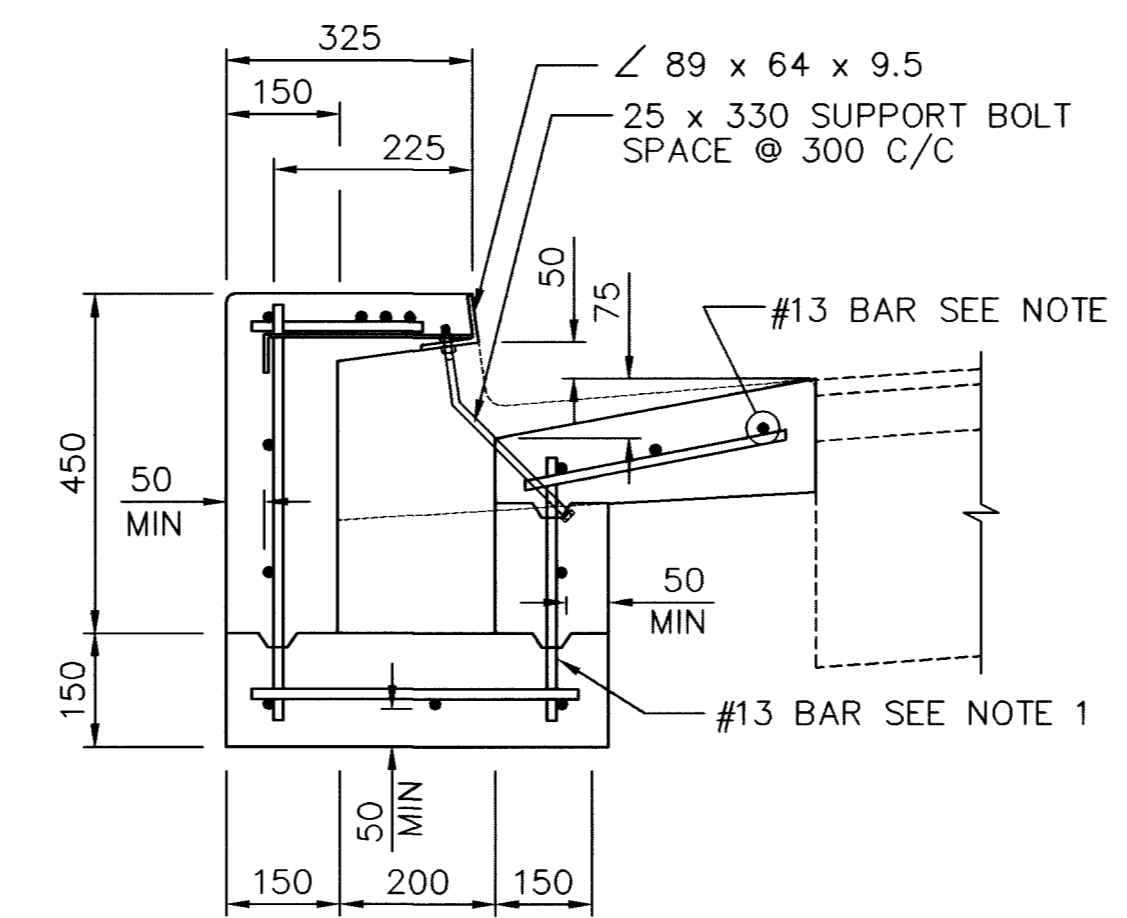
ALL DIMENSIONS ARE IN MILLIMETERS UNLESS OTHERWISE NOTED



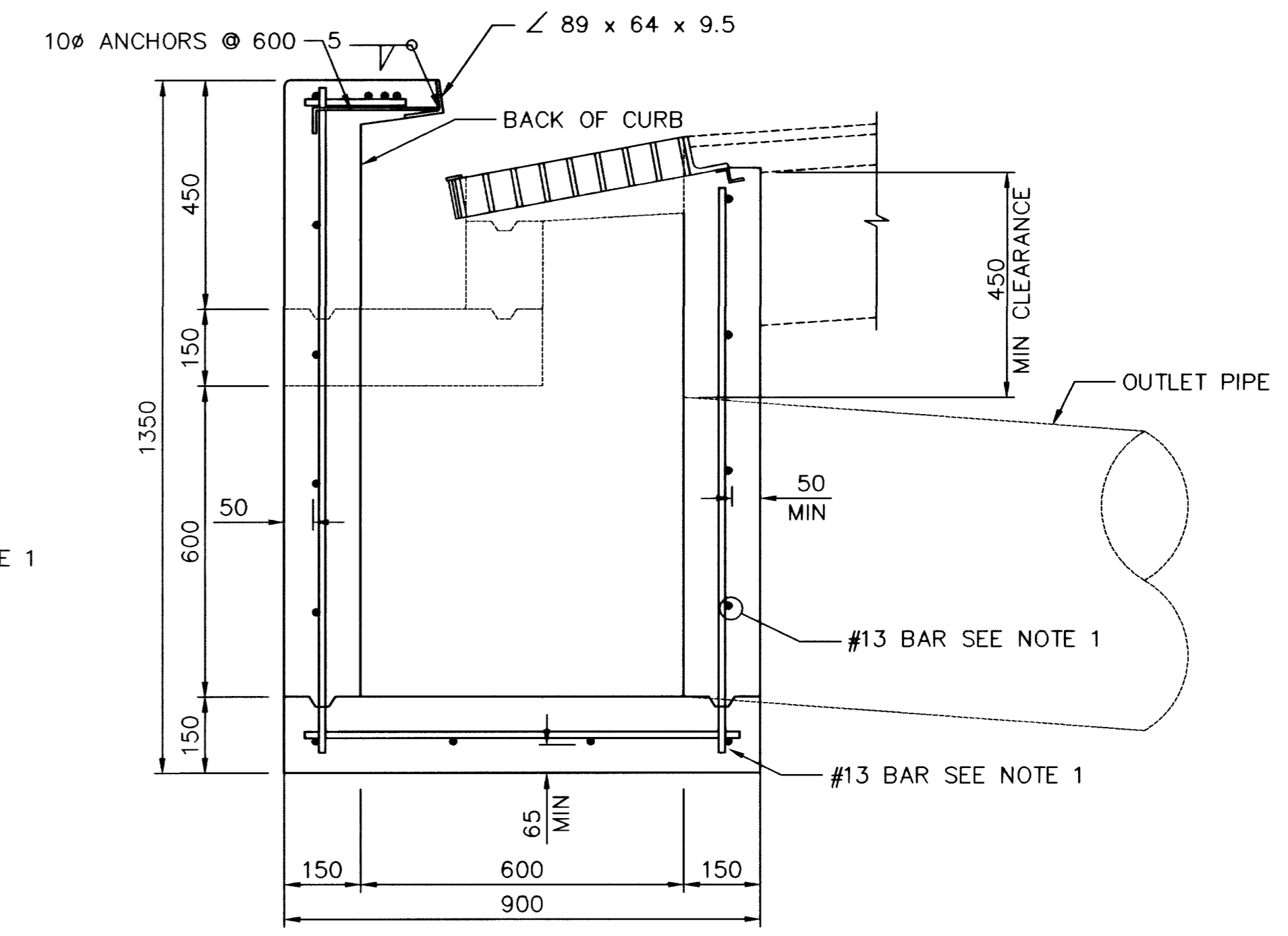
STEEL PLATE AND SUPPORT BOLT DETAIL

NOTES:

1. REINFORCING STEEL SHALL BE #13 BARS EXCEPT AS NOTED, WITH MAX. SPACING AT 300mm CENTERS, WIRED TIGHTLY AT ALL INTERSECTIONS. PROVIDE AT LEAST 65mm CLEAR FOR INVERT AND 50mm ELSEWHERE.
2. ALL EXPOSED METALS SHALL BE HOT DIP GALVANIZED AFTER FABRICATION.
3. WHEN REQUIRED BY LENGTH OF OPENING, PLATE ANGLE MAYBE DELIVERED IN SECTIONS AND BUTT WELDED IN PLACE.
4. ALL GALVANIZING DAMAGED BY WELDING SHALL RECEIVE TWO COATS OF GALVALLOY OR EQUAL.
5. ANGLE ANCHORS SHALL BE IMBEDDED MIDPOINT IN EACH ENDWALL AND EVENLY SPACED. (MAX. 600mm)
6. FOR GRATE AND SUPPORT BOLT DETAILS SEE USD DWG'S 417, 418 AND 419.
7. CONCRETE SHALL BE CLASS D CONCRETE (MINOR).
8. OUTLET PIPE SIZE AS SHOWN ON PLANS.



SECTION "C-C"



SECTION "D-D"

DROP INLET TYPE "D" MODIFIED

DATE	4/20/03
REVISIONS	
RECORD DRAWING	
PROJECT #	31604
DESIGN BY	BBP
SCALE (V)	N/A
DATE	DEC 17, 1999
SCALE (H)	N/A
F.L.D. Bk. #	N/A

**PARSONS BRINCKERHOFF**  
Los Vegas, Nevada

STATE OF NEVADA  
REGISTERED PROFESSIONAL ENGINEER  
FRED Y. FENG  
No. 1100

DEPARTMENT OF PUBLIC WORKS  
I-15 FREEWAY CHANNEL  
DROP INLET DETAILS

DRAWING No. 1414  
S-7A  
241