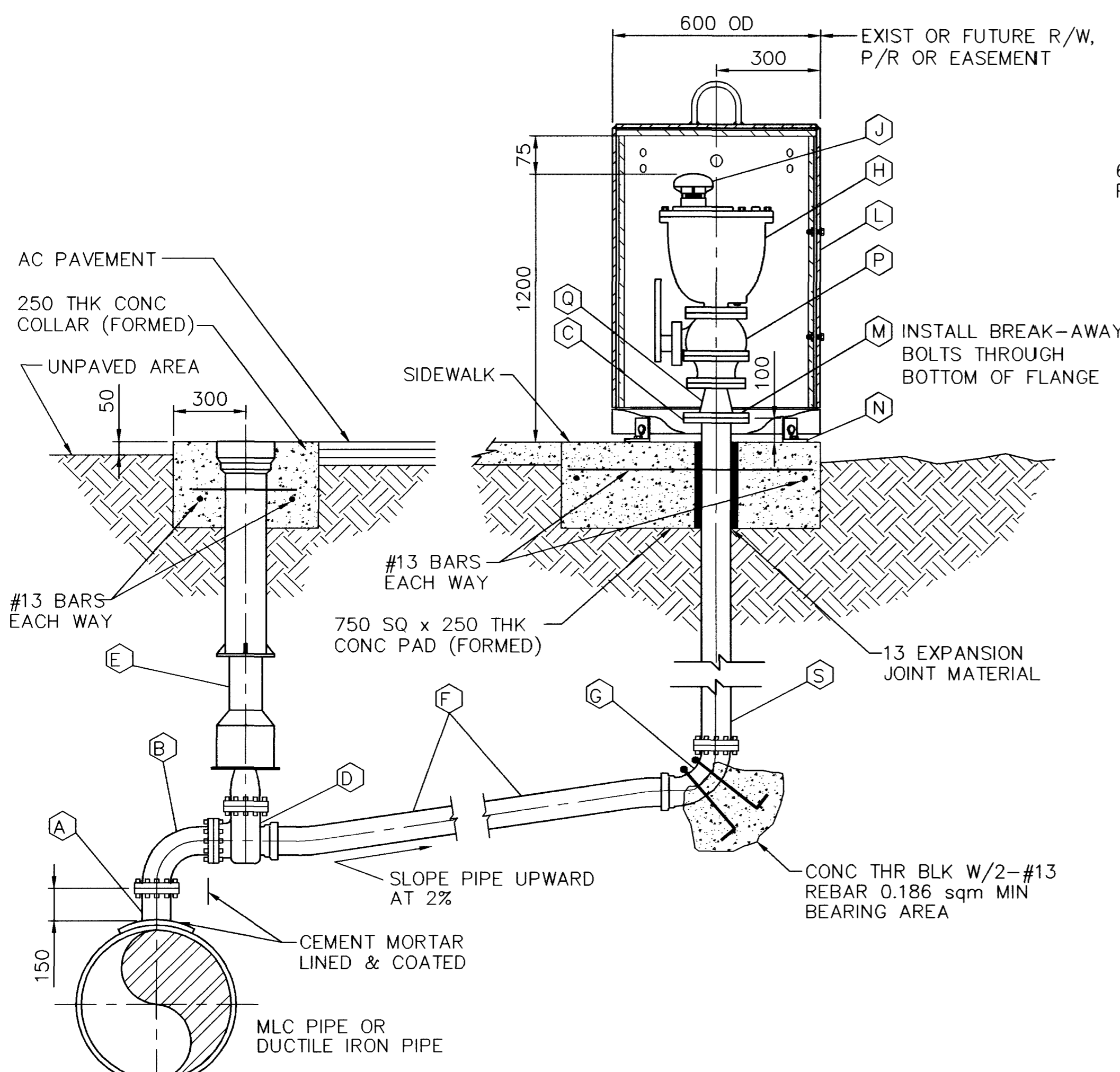
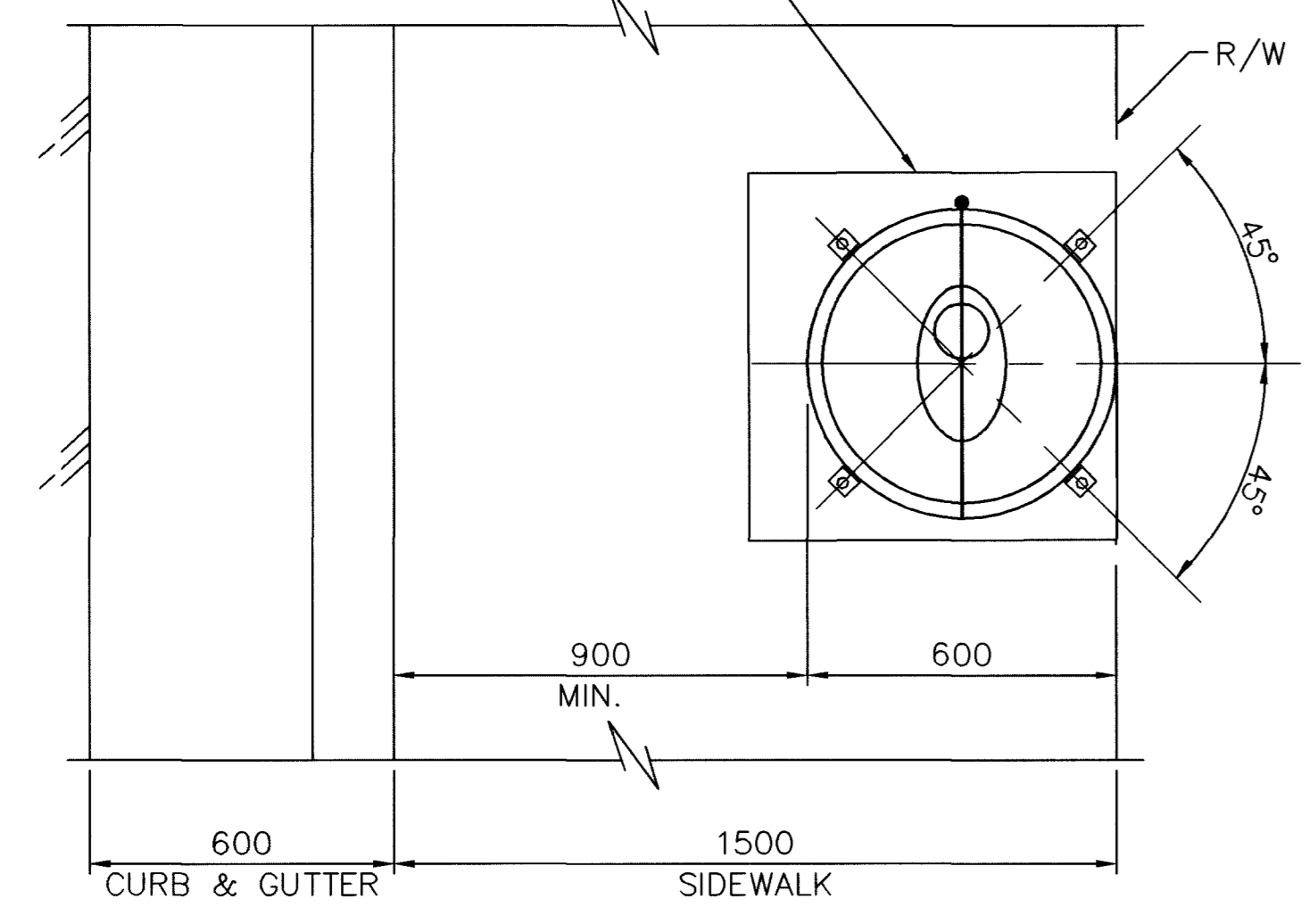


ALL DIMENSIONS ARE IN MILLIMETERS UNLESS OTHERWISE NOTED



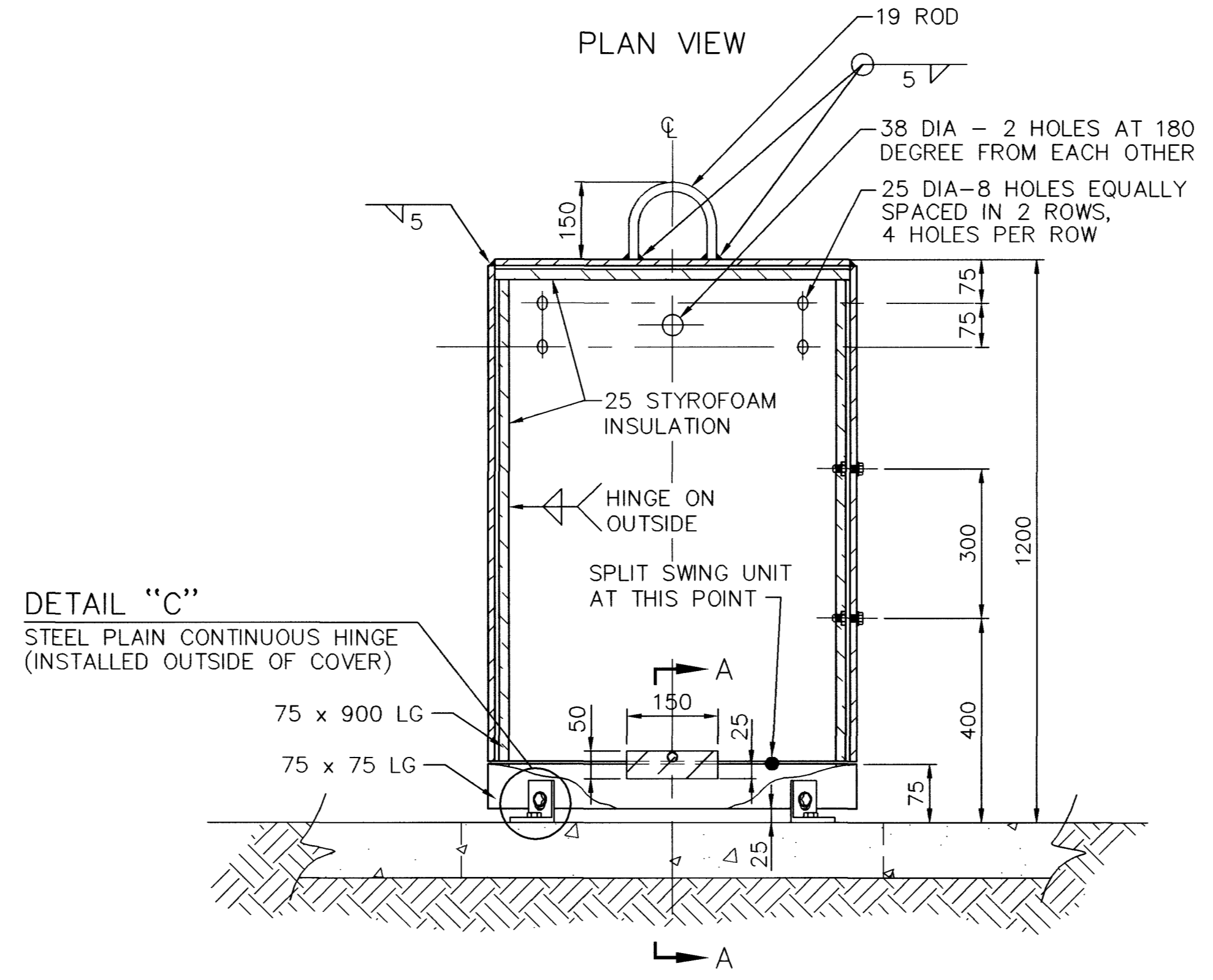
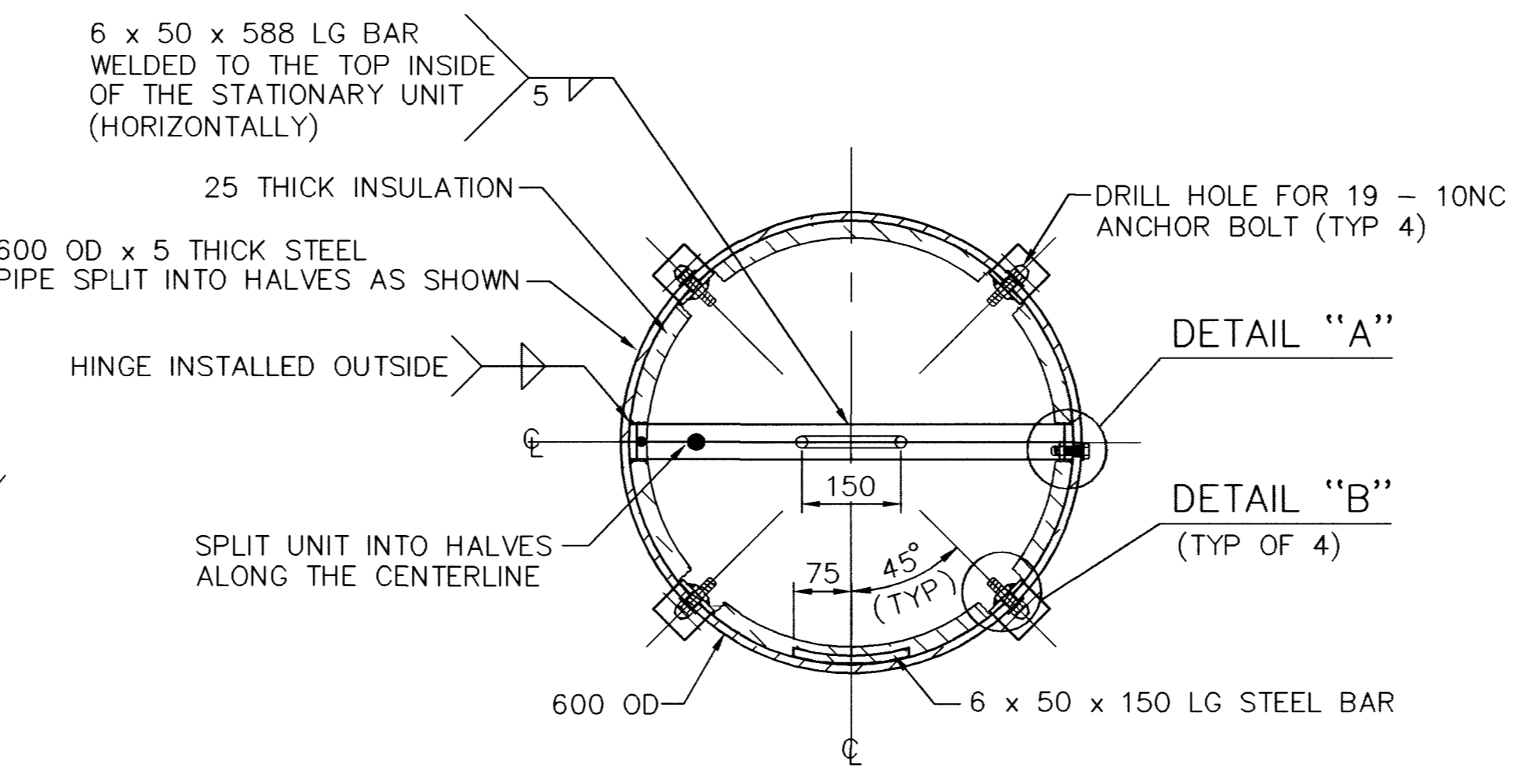
75 OR 100 COMB AIR VALVE PROFILE

USE 750 SQ x 250 THK CONC PAD (FORMED) IN THE ABSENCE OF SIDEWALK.

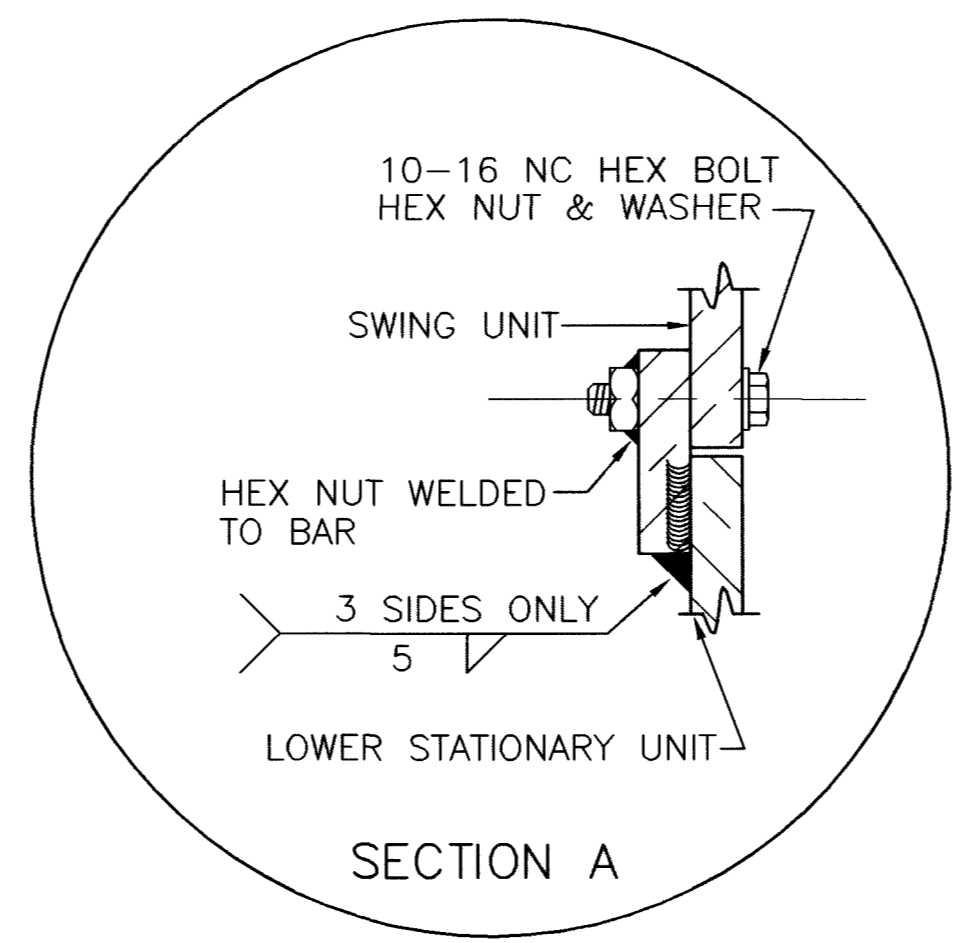


PLAN VIEW

NOTES
 IN IMPROVED AREAS CONTRACTOR TO REPLACE FULL SIDEWALK PANEL.
 IN UNIMPROVED AREAS CONTRACTOR TO CONSTRUCT FORMED
 750 SQ x 250 THICK CONCRETE SLAB.

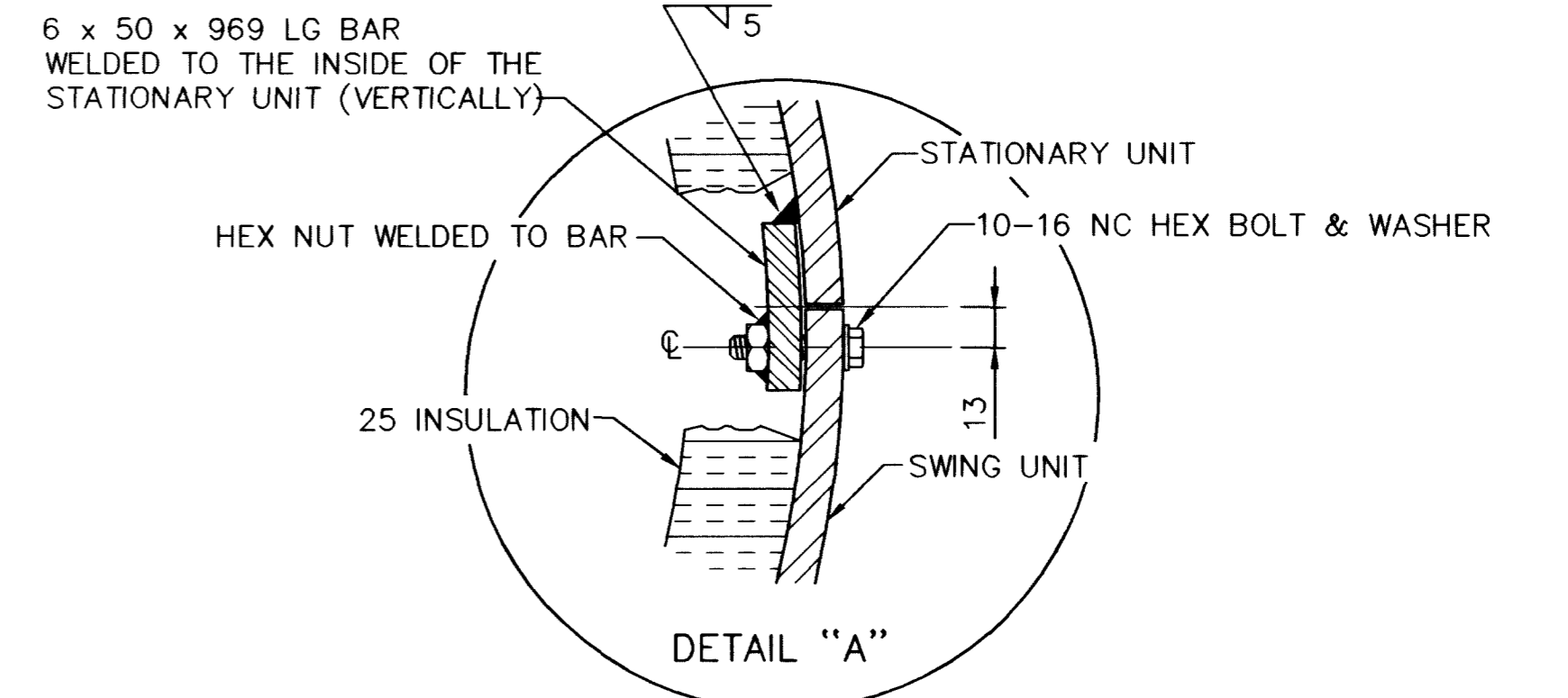


SECTION/ELEVATION

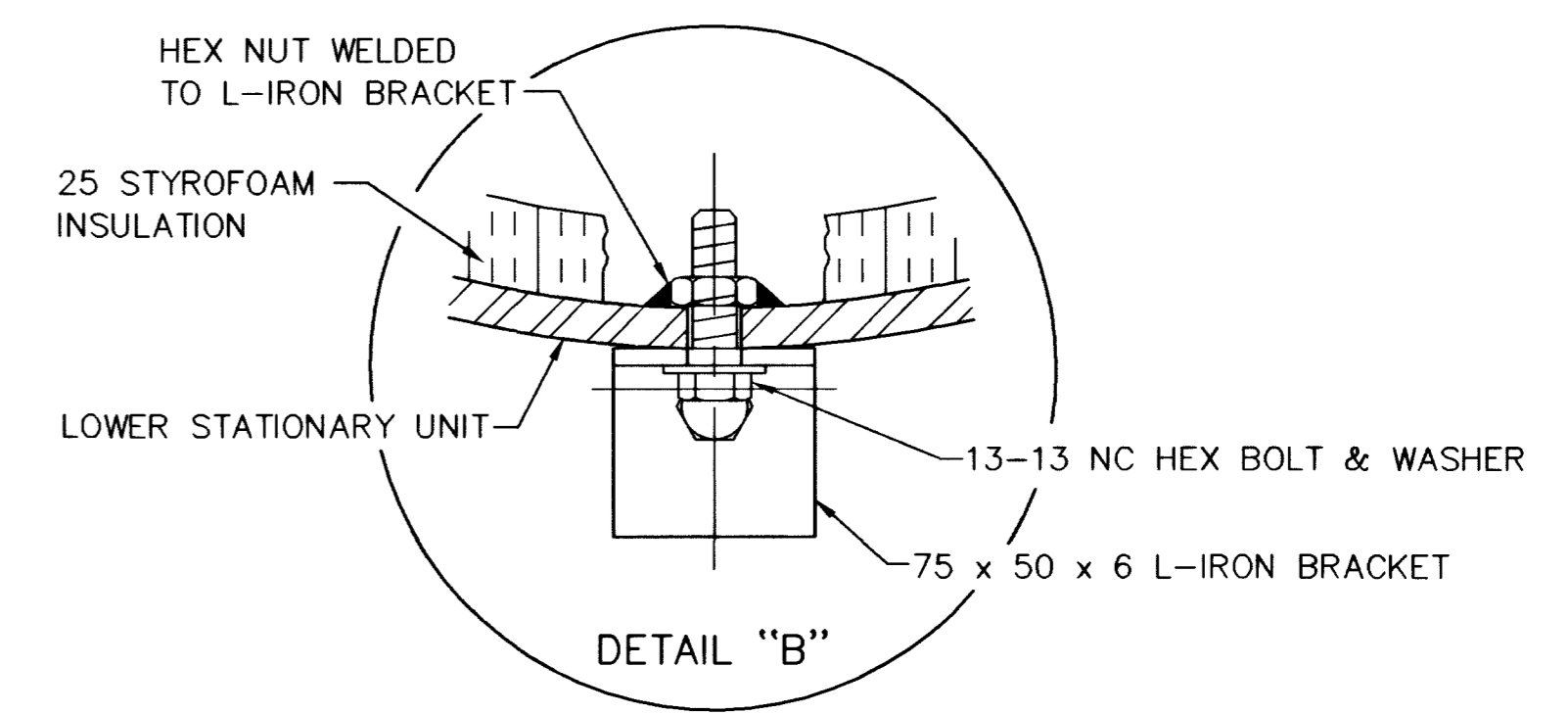


SECTION A

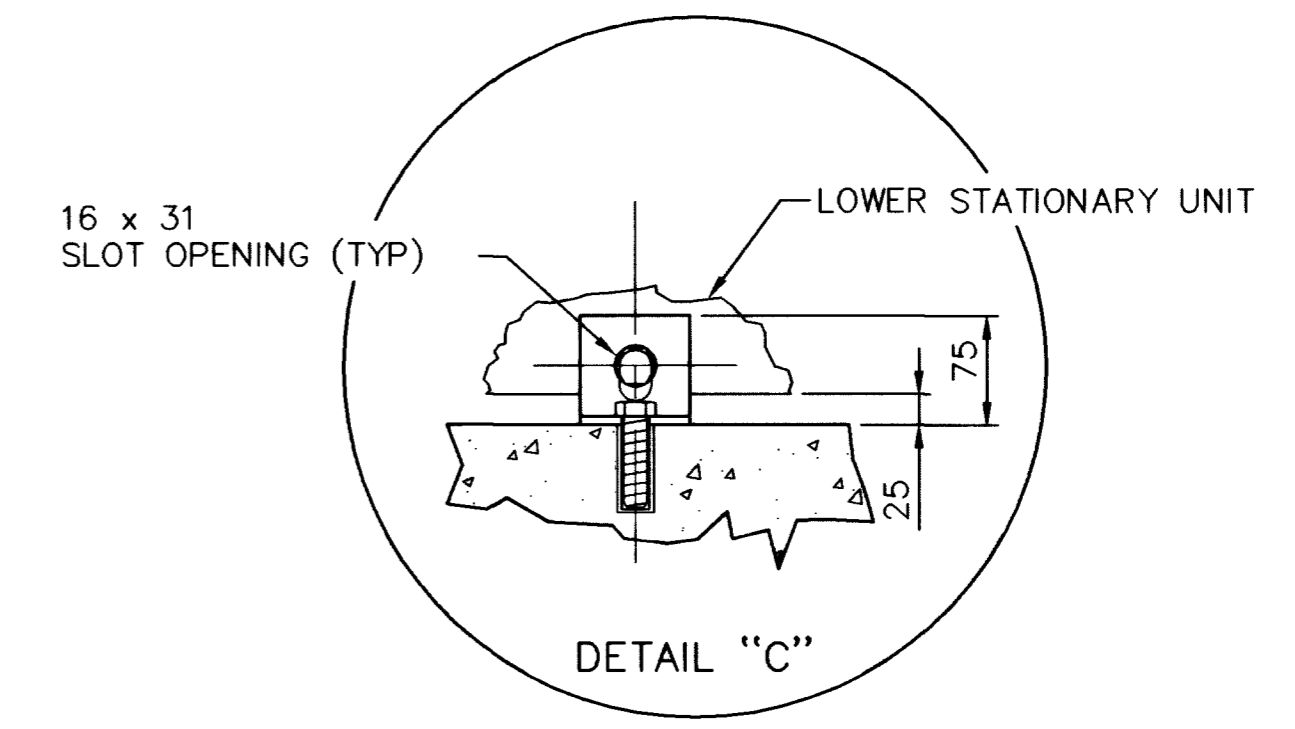
DRAWING NOTE:
 USE ONLY THE APPROPRIATE DRAWING(S)
 AND DESCRIPTIONS FOR SELECTED SIZE OF
 COMBINATION AIR VALVE ASSEMBLY.



DETAIL "A"



DETAIL "B"



DETAIL "C"

NOTE
 ALL EXPOSED FERROUS METAL SHALL BE COATED.
 EXTERIOR COLOR TO BE WHITE.

LEGEND

- (A) 100 FLG STL OUTLET FOR MLC STL PIPE, FLG TEE FOR DIP
- (B) 100-90° FLG DUCTILE IRON BEND
- (C) 100 DUCTILE IRON FLANGE ADAPTOR
- (D) 100 FLG x PO OR FLG x MJ GATE VALVE W/50 OPERATING NUT
- (E) VALVE BOX & COVER - SEE VALVE BOX AND INSTALLATION DETAIL
- (F) 100 DUCTILE IRON CL50 PIPE OR 100 PVC CL150 DR18 PIPE
- (G) 100-90° FLG x PO OR FLG x MJ CI BEND
- (H) 75 OR 100 COMBINATION AIR VALVE, FLANGED INLET
- (I) 75 OR 100 MUSHROOM FOR 75 OR 100 COMBINATION AIR VALVE ASSY
- (J) 600 OD x 1200 HIGH STEEL COVER
- (K) 16-11NC BREAK-AWAY ZINC PLATED HEX HD BOLT, HEX NUT AND LOCKWASHER
- (L) 13-13NC x 63 LG "RED HEAD" ANCHOR BOLT INSTALLED OUTSIDE
- (M) 75 OR 100 BALL VALVE - QUARTER TURN - FOR 75 OR 100 COMB AIR VALVE ASSYMBLY
- (N) 100 x 75 FLG DUCTILE IRON REDUCER - FOR 75 COMB AIR VALVE ASSYMBLY
- (O) 100 DUCTILE IRON CL50 PIPE OR 100 PVC CL150 DR18 PIPE

NOTE
 SEE SPECIFICATIONS FOR ALL APPROVED PRODUCTS

APPROVED FOR CONSTRUCTION
 LAS VEGAS VALLEY WATER DISTRICT DATE

DATE	4/30/03
REVISIONS	
RECORD DRAWING	
PROJECT #	31604
DESIGN BY	LJWD
DATE	DEC 17, 1999
SCALE (V)	NTS
SCALE (H)	NTS
FLD. BK. #	N/A

PARSONS BRINCKERHOFF
Las Vegas, Nevada

DEPARTMENT OF PUBLIC WORKS
I-15 FREEWAY CHANNEL
UTILITY DETAILS

APPROVED FOR CONSTRUCTION
 LAS VEGAS VALLEY WATER DISTRICT DATE

DRAWING No. 201
U-42
 241

RECORD DRAWING METRIC