

I-15 (SB)

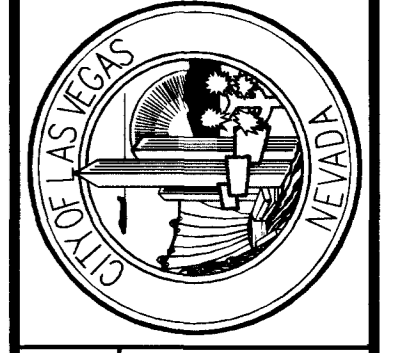
SEE DRAWINGS R-3 AND R-4 FOR PROFILES

CURVE DATA

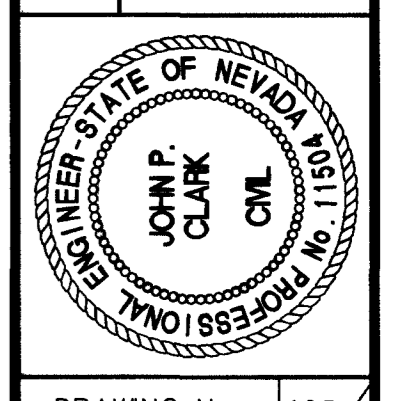
No.	Δ	R	L	T
C1	21°12'12"	87.900m	32.529m	16.453m
C2	22°47'41"	33.600m	13.368m	06.773m
C3	114°14'52"	09.600m	19.142m	14.853m
C4	30°05'06"	33.600m	17.643m	09.030m
C5	27°25'09"	58.800m	28.139m	14.344m
C6	14°30'00"	282.946m	71.606m	35.995m
C7	39°52'44"	18.845m	13.117m	06.837m
C8	145°09'21"	00.300m	00.760m	00.956m
C9	133°16'27"	00.600m	01.396m	01.389m
C10	121°26'57"	00.600m	01.272m	01.070m
C11	21°27'08"	30.000m	11.232m	05.683m
C12	01°42'12"	274.046m	08.147m	04.074m
C13	171°34'30"	00.300m	00.898m	04.073m
C14	158°32'52"	00.300m	00.830m	01.584m

REVISIONS	DATE
RECORD DRAWING	4/30/03

PROJECT #	SCALE (V)	SCALE (H)	DATE	DESIGN BY
31604	N/A	1:250	DEC 17, 1999	DWR



DEPARTMENT OF PUBLIC WORKS
 I-15 FREEWAY CHANNEL
 INTERSECTION DETAIL
 "MLK" and RAMP "MLK-S"



DRAWING No. 105
 R-9 241

RECORD DRAWING METRIC