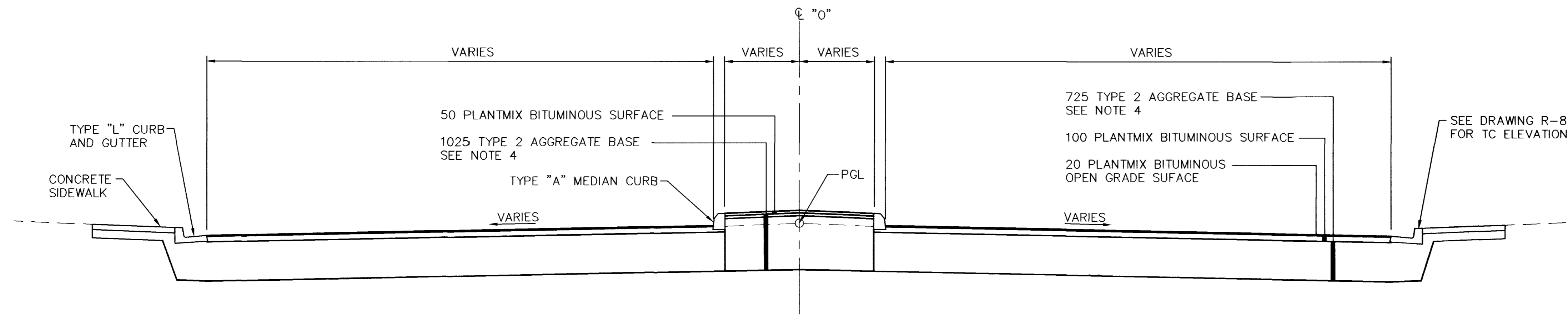
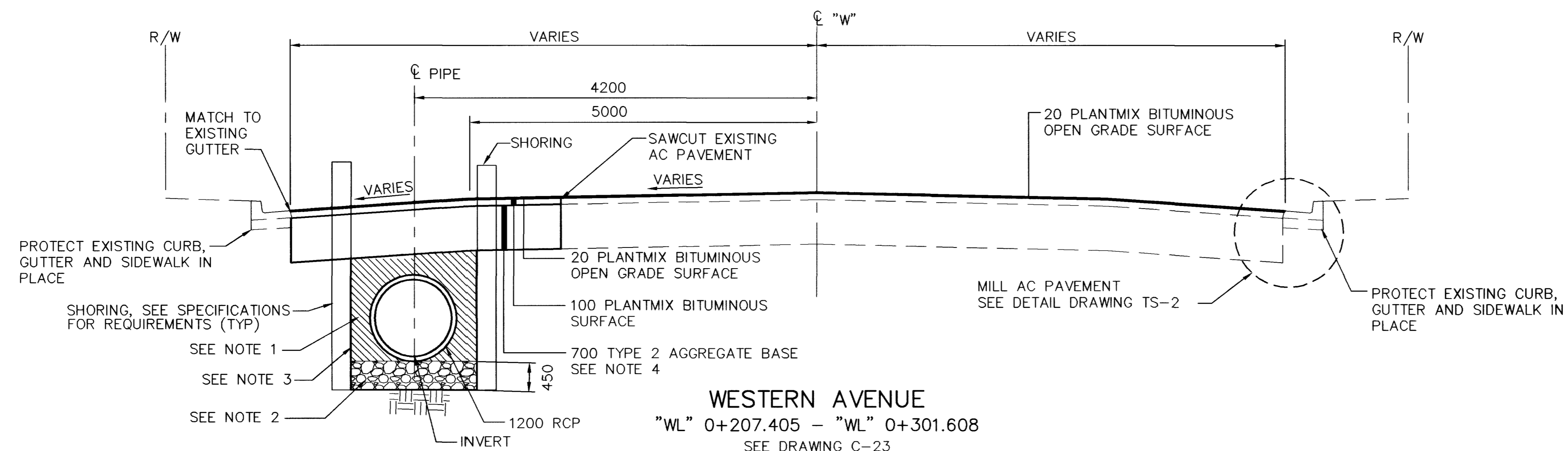


ALL DIMENSIONS ARE IN MILLIMETERS
UNLESS OTHERWISE NOTED.



OAKLEY BOULEVARD
"0" 1+300.000 TO "0" 1+404.000
SEE DRAWING R-8 AND R-13



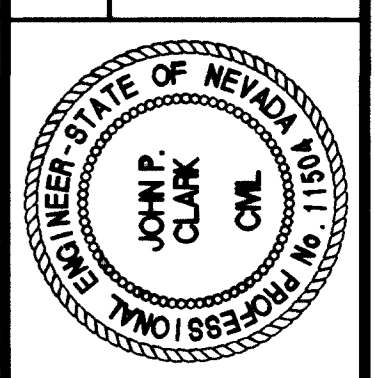
WESTERN AVENUE
"WL" 0+207.405 - "WL" 0+301.608
SEE DRAWING C-23

- NOTES:
1. READY MIX FLOWABLE BACKFILL. SEE SPECIFICATIONS FOR REQUIREMENTS
 2. TYPE 2 BEDDING TO BE COMPACTED TO 95% PER ASTM D1557. SEE SPECIFICATIONS FOR REQUIREMENTS
 3. SEE SPECIFICATIONS FOR GEOTEXTILE REQUIREMENTS
 4. TYPE 2 AGGREGATE TO BE COMPACTED TO 95% PER ASTM D1557.
 5. SEE USDCCA FOR PIPE BEDDING DETAILS.
 6. GEOTEXTILE FILTER FABRIC MAY BE OMITTED ADJACENT TO READY-MIX FLOWABLE FILL WHERE THIS MATERIAL IS USED AS A BACKFILL.

DATE	REVISIONS	PROJECT #	DESIGN BY
		31804	DSP
		N/A	DEC 17, 1999
		N/A	DATE
		N/A	SCALE (V)
		N/A	SCALE (H)
		N/A	FLD. Bk. #



DEPARTMENT OF PUBLIC WORKS
I-15 FREEWAY CHANNEL
TYPICAL SECTIONS



DRAWING No. 11
TS-6