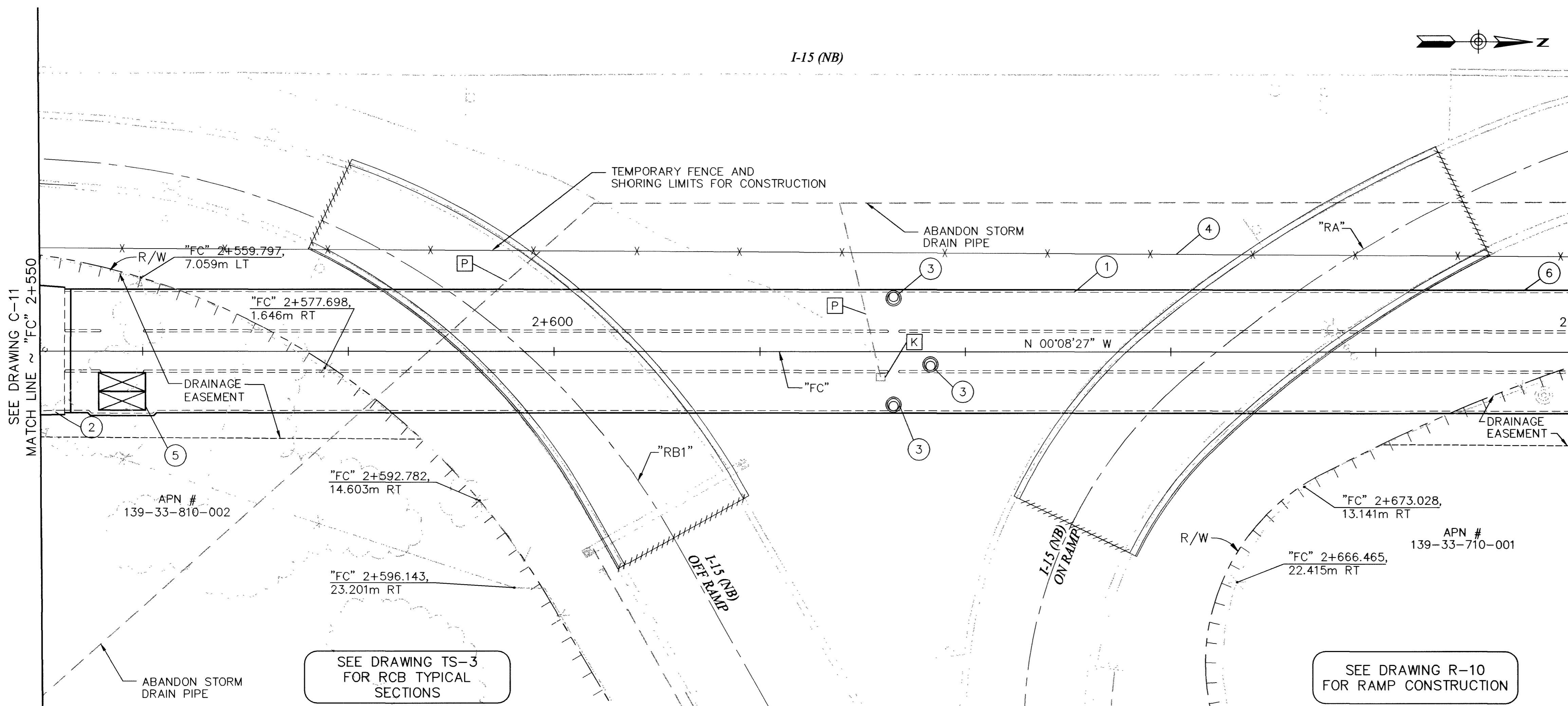
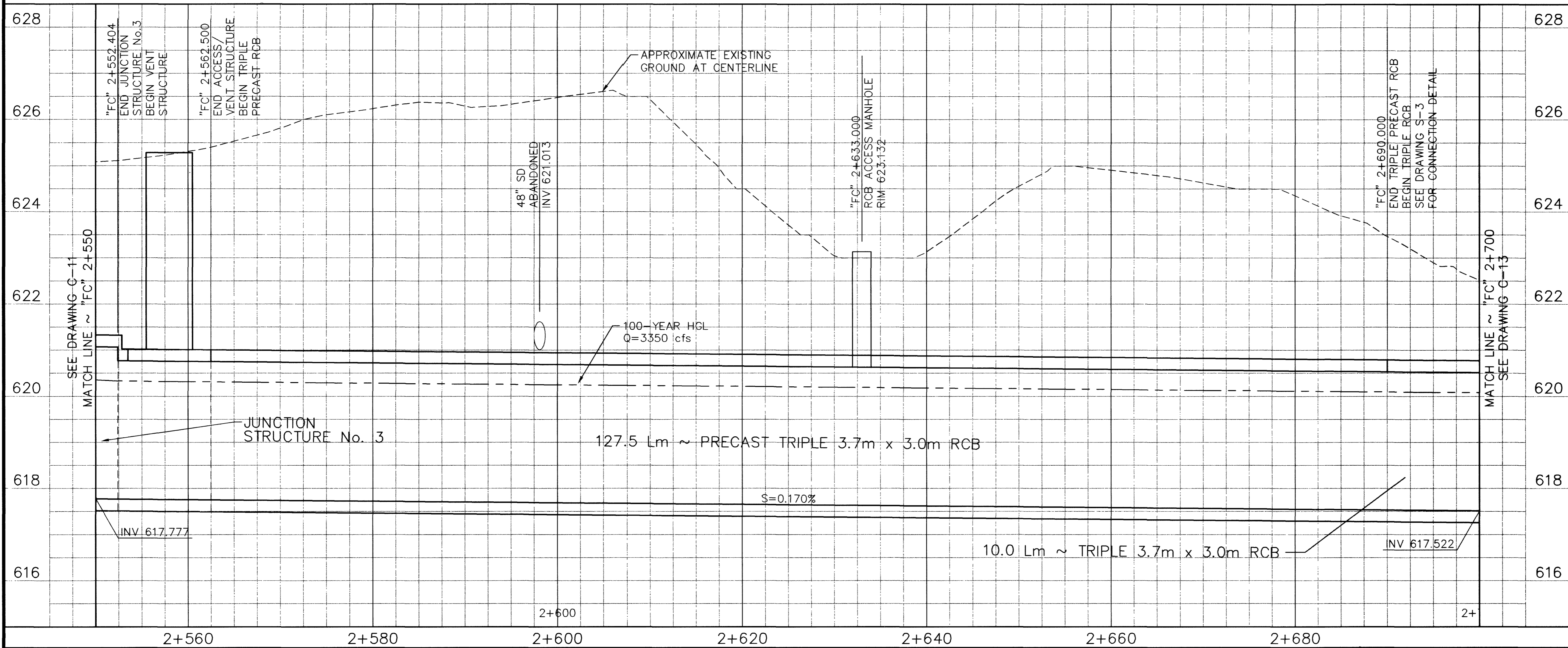
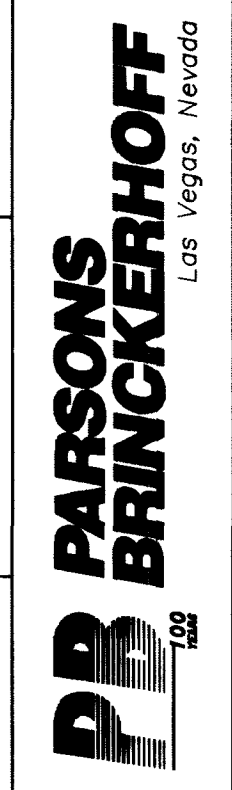


I-15 (NB)



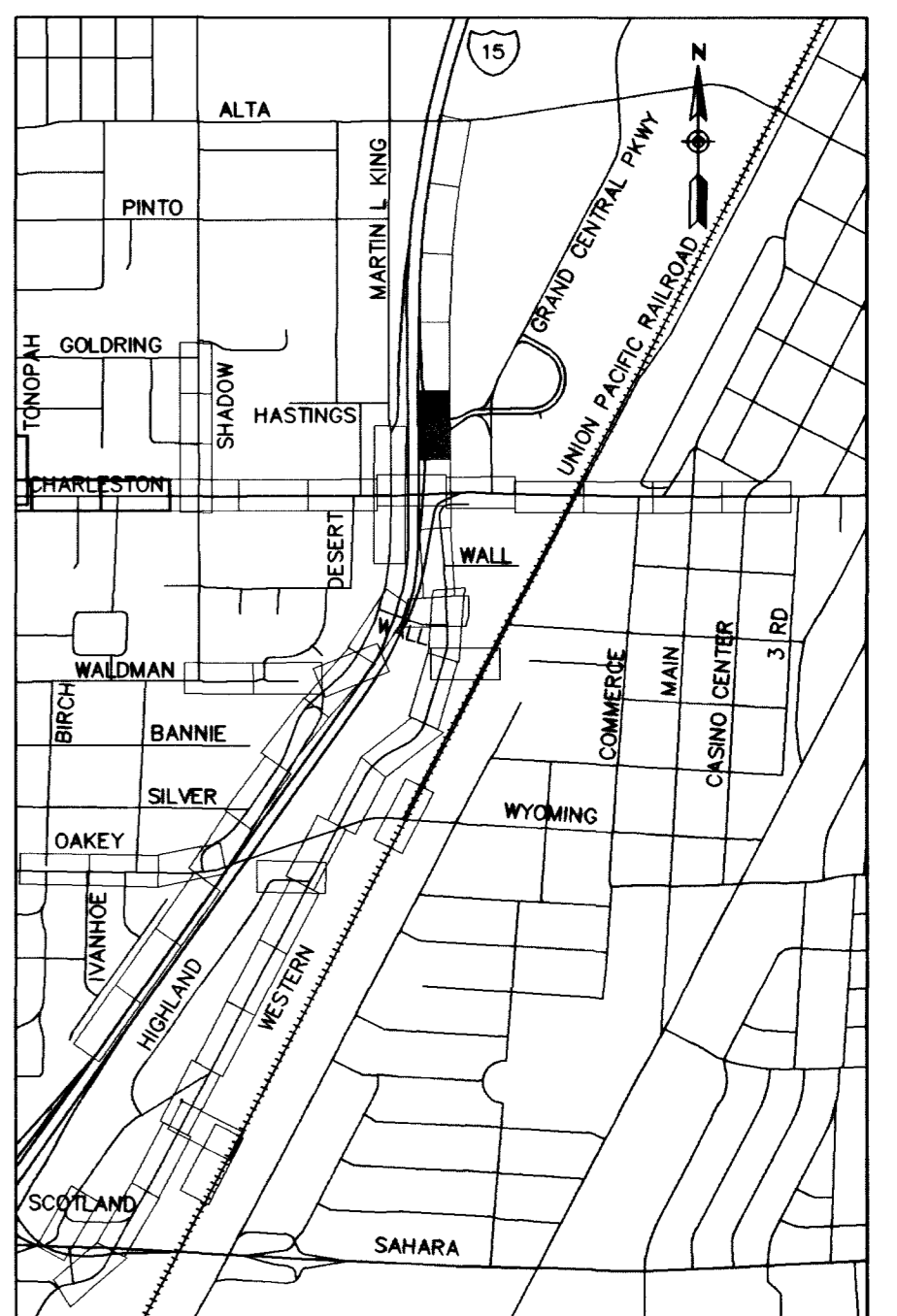
- REMOVAL ITEMS**
- [K] REMOVE DI
 - [P] REMOVE STORM DRAIN PIPE (AS NEEDED FOR CONSTRUCTION)
- CONSTRUCTION ITEMS**
- ① "FC" 2+562.500 TO "FC" 2+690.000 CONSTRUCT PRECAST TRIPLE 3.7m x 3.0m RCB
 - ② "FC" 2+550.000 TO "FC" 2+552.404 CONSTRUCT JUNCTION STRUCTURE No. 3 SEE DRAWING S-13
 - ③ "FC" 2+633.000, 5.150m RT "FC" 2+633.000, 5.150m LT "FC" 2+636.600, 1.250m RT CONSTRUCT RCB ACCESS MH SEE DRAWING S-19
 - ④ "FC" 2+550.000, 10.010m LT TO "FC" 2+700.000, 9.292m LT CONSTRUCT TEMPORARY 1.8m CHAIN LINK FENCE
 - ⑤ "FC" 2+552.404 TO "FC" 2+562.500 CONSTRUCT ACCESS/VENTILATION STRUCTURE SEE DRAWING S-17
 - ⑥ "FC" 2+690.000 TO "FC" 2+700.000 CONSTRUCT TRIPLE 3.7m x 3.0m RCB

DATE	04/20/03
REVISIONS	
RECORD DRAWING	
PROJECT #	31604
DESIGN BY	BPP
SCALE (V)	1:50
DATE	DEC 17, 1999
SCALE (H)	1:250
F.L.D. BK. #	N/A



Call before you Dig.
1-800-277-2600
UNDERGROUND SERVICE (USA)

Call before you Overhead.
563-6111
OVERHEAD SERVICE (USA)

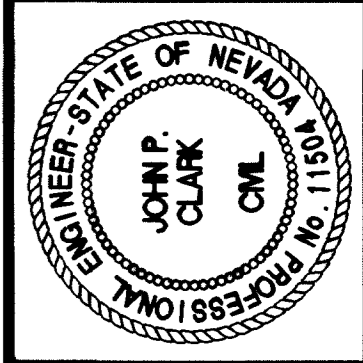


DEPARTMENT OF PUBLIC WORKS

I-15 FREEWAY CHANNEL

CONSTRUCTION PLAN AND PROFILE

"FC" 2+550 TO "FC" 2+700



DRAWING No. **C-12**

RECORD DRAWING METRIC