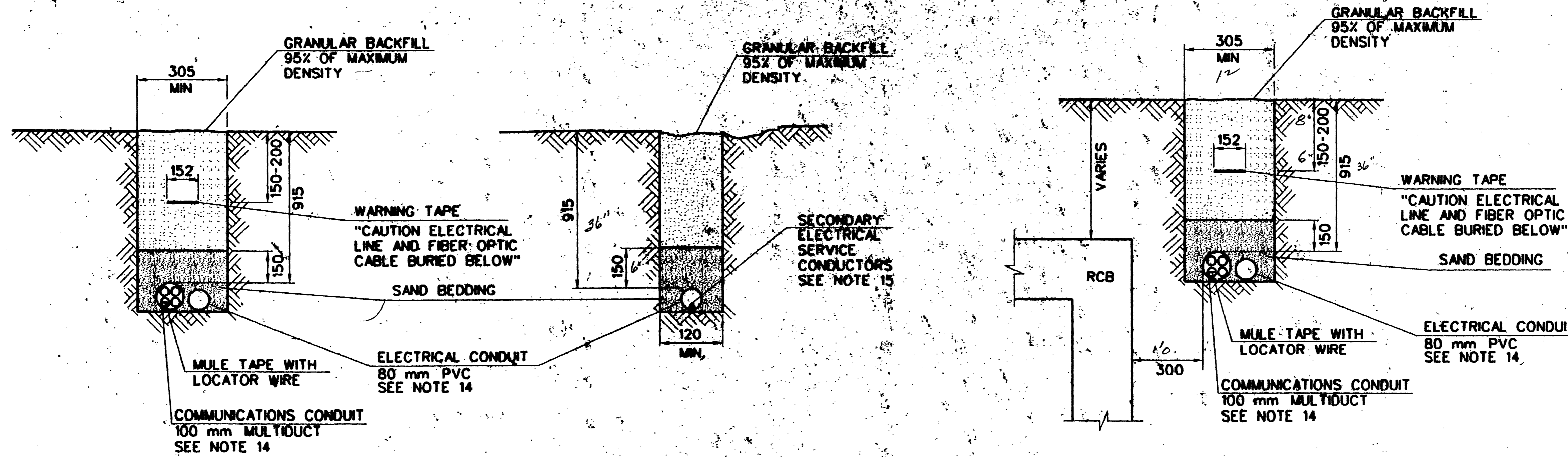


ALL DIMENSIONS ARE IN MILLIMETERS UNLESS OTHERWISE NOTED, ALL STATIONS ARE IN METERS.



TYPICAL TRENCHES

**NOTES:**

1. THE TRENCH BOTTOM SHALL BE SMOOTH, FLAT, AND WITHOUT SURFACE IRREGULARITIES; OTHERWISE, A SUFFICIENT AMOUNT OF BEDDING MATERIAL SHALL BE PLACED TO PROVIDE THE REQUIRED SURFACE.
2. CONTRACTOR SHALL SUPPLY 150mm OF SAND BEDDING AROUND ALL ELECTRICAL CONDUIT. SAND BEDDING SHALL NOT CONTAIN ROCKS LARGER THAN 38mm IN THEIR GREATEST DIMENSION. THE SAND BEDDING SHALL CONTAIN ENOUGH FINES TO FILL ALL VOIDS.
3. ALL TRENCH DEPTHS AND WIDTHS OF UTILITY TRENCHES MUST BE APPROVED BY A UTILITY COMPANY CUSTOMER REPRESENTATIVE. ALL DIMENSIONS SHOWN ARE MINIMAL.
4. CONTRACTOR SHALL INSTALL CONDUIT FROM SERVICE ENTRANCE TO BASE OF UTILITY COMPANY POLE OR UP TO PAD MOUNTED TRANSFORMER AND INSTALL APPROVED SWEEPS OR STUBOUTS AT POLE BASE OR PAD.
5. UTILITY COMPANY TO EXTEND CONDUIT FROM POWER SOURCE TO UNDERGROUND ELECTRICAL SERVICE AND INSTALL SERVICE CONDUCTORS TO UNDERGROUND ELECTRICAL SERVICE OR LOAD CENTER.
6. IF UTILITY CONDUIT IS STUBBED OUT OF PAD MOUNTED TRANSFORMER, CONTRACTOR SHALL CONNECT CONDUIT TO STUB, UNLESS STUB IS A FLEX CONDUIT, IN WHICH CASE THE UTILITY COMPANY SHALL DIRECT THE CONTRACTOR ON HOW TO MAKE THE CONNECTION.
7. CONTRACTOR SHALL BACKFILL CONDUIT FROM SERVICE ENTRANCE EQUIPMENT TO 457mm FROM TRANSFORMER PAD AT A LOCATION IDENTIFIED BY A UTILITY REPRESENTATIVE. CONDUIT END TO BE CAPPED.
8. CONTRACTOR SHALL COORDINATE WITH "CALL BEFORE YOU DIG" TO LOCATE ALL EXISTING UTILITIES PRIOR TO DIGGING.
9. TRENCH DEPTHS AND CONDUIT COVER ARE TO BE MEASURED FROM FINAL GRADE STAKES. THE CONTRACTOR SHALL FOLLOW ALL TRENCH DEPTHS OR CONDUIT COVER REQUIREMENT SPECIFIED ON A JOB DRAWING.
10. GRANULAR BACKFILL SHALL CONFORM TO NDOT'S SAHARA WIDENING PROJECT'S SPECIAL PROVISIONS.
11. ALL SPOIL MATERIALS SHALL BE REMOVED OFFSITE BY THE CONTRACTOR.
12. AREA SHALL BE RETURNED TO EXISTING GRADE.
13. CONDUIT COUPLINGS SHALL BE STAGGERED.
14. CONDUIT SIZE AND NUMBER MAY VARY. SEE PLANS.
15. MULE TAPE WITH LOCATOR WIRE SHALL BE INSTALLED IN ELECTRICAL CONDUIT IF CONDUIT IS EMPTY.
16. CONDUIT DEPTH SHALL BE 915mm TO TOP OF CONDUIT, REGARDLESS OF CHANNEL DEPTH.

|   |  |
|---|--|
| DATE  |  |
| REVISIONS   |  |
| W.A. * DESIGN BY  | Kimley-Horn and Associates, Inc.                     |
| FULL SCALE 1:500 DATE   | Engineering, Planning, and Environmental Consultants |
| HALF SCALE 1:1000 FLD. BK. *  | © 1995   |
|   |  |
| <b>DEPARTMENT OF PUBLIC WORKS</b><br>I-15 FREEWAY CHANNEL<br>ITS INFRASTRUCTURE<br>CONDUIT TRENCH DETAILS |  |
| DRAWING NO.   | IT-3   |