

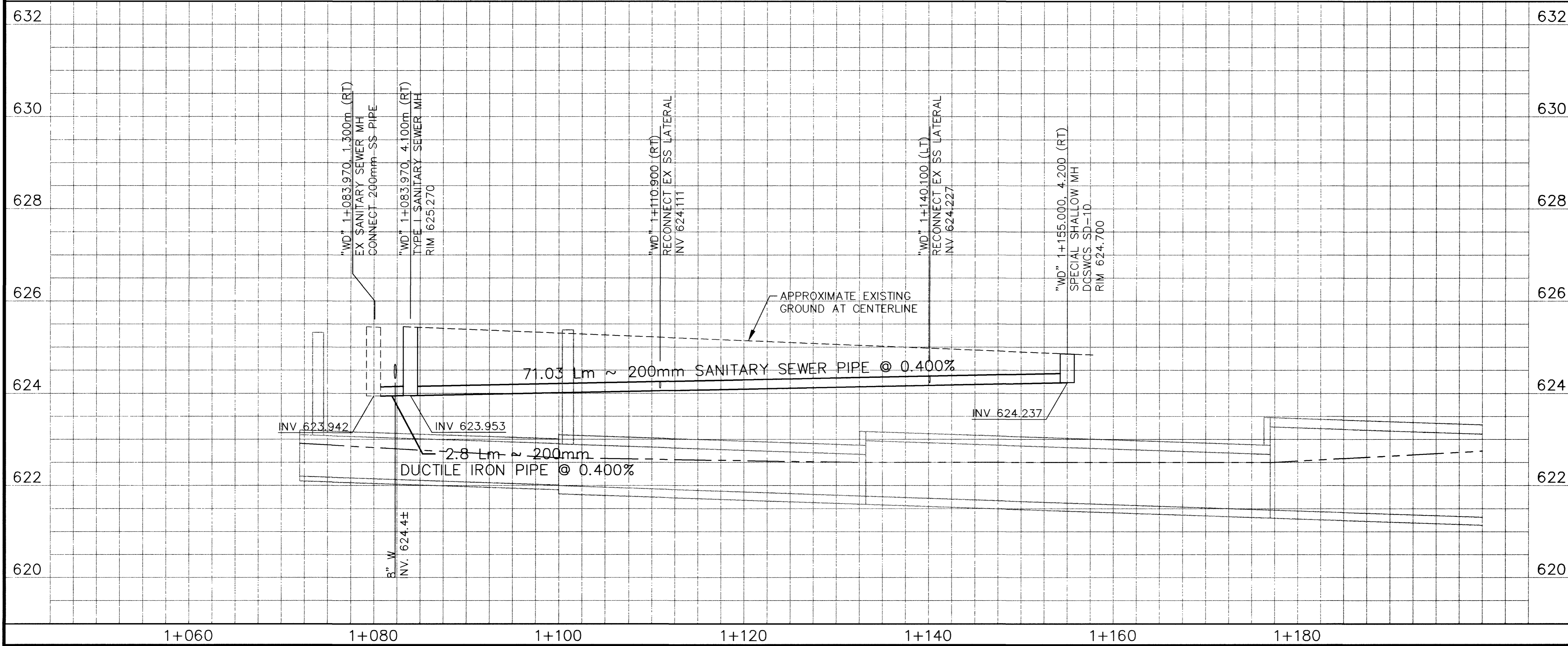
- REMOVAL ITEMS**
- ① REMOVE MH
- CONSTRUCTION ITEMS**
- ① "WD" 1+083.970, 1.300m RT TO CONSTRUCT 200mm SANITARY SEWER PIPE
  - "WD" 1+083.970, 4.100m RT SANITARY SEWER PIPE
  - "WD" 1+083.970, 4.100m RT TO
  - "WD" 1+155.000, 4.200m RT
  - ② "WD" 1+083.970, 4.100m RT CONSTRUCT TYPE I SANITARY SEWER MH
  - ③ "WD" 1+155.000, 4.200m RT CONSTRUCT SPECIAL SHALLOW MH DCSWCS SD-10
  - ⑤ "WD" 1+110.900 RT RECONNECT EX SANITARY SEWER LATERAL
  - "WD" 1+140.100 LT

DATE	REVISIONS
3/30/00	
4/30/03	

SCALE (H)	1:250	SCALE (V)	1:50	PROJECT #	31604
F.L.D. BK. #	N/A	DATE	DEC 17, 1999	DESIGN BY	KFN



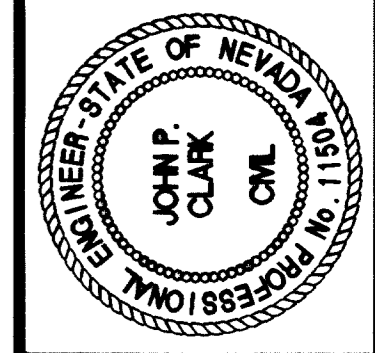
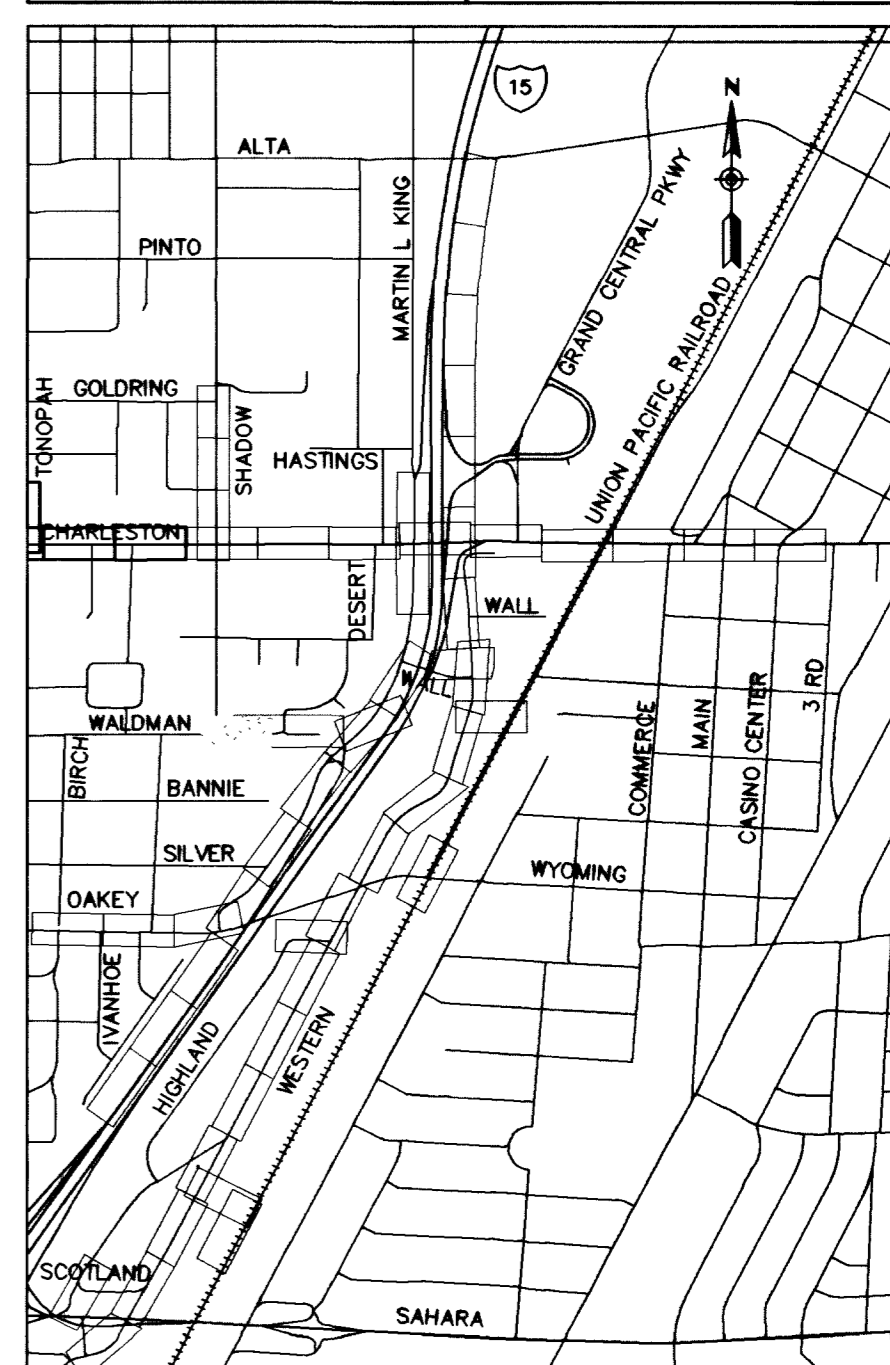
**DEPARTMENT OF PUBLIC WORKS**  
**I-15 FREEWAY CHANNEL**  
**UTILITY RELOCATION (WALDMAN AVE)**  
**"WD" 1+100 TO "WD" 1+200**



APPROVED FOR CONSTRUCTION  
 LAS VEGAS VALLEY WATER DISTRICT      DATE

**Call before you Dig.**  
 1-800-277-2600  
UNDERGROUND SERVICE (USA)

**Call before you Overhead**  
 563-6111  
OVERHEAD SERVICE (USA)



DRAWING No. 168  
**U-9**  
 241

52682