

- REMOVAL ITEMS**
- T REMOVE MH
- CONSTRUCTION ITEMS**
- 1 "0" 1+110.000, 4.500m LT TO CONSTRUCT 200mm SANITARY SEWER
 - "0" 1+188.087, 4.500m LT TO
 - "0" 1+212.860, 4.500m LT TO
 - "0" 1+260.000, 4.500m LT TO
 - "0" 1+188.087, 4.500m LT TO
 - "0" 1+188.087, 8.000m RT TO
 - "0" 1+188.087, 18.000m RT TO
 - "0" 1+212.860, 4.500m LT TO
 - "0" 1+212.860, 19.500m LT
 - 2 "0" 1+188.087, 18.000m RT TO CONSTRUCT TYPE I SANITARY SEWER MH
 - "0" 1+188.087, 4.500m LT
 - 3 "0" 1+127.400 LT RECONNECT EX WATER SERVICE PER LVWMD UDS PLATE No. 1B OR 1D
 - "0" 1+145.000 LT
 - "0" 1+192.800m LT
 - 4 "0" 1+216.500, 6.600m RT TO RELOCATE 150mm WATER LINE SEE DETAIL DRAWING U-40
 - "0" 1+216.500, 6.000m LT
 - 5 "0" 1+130.400 LT RECONNECT EX SANITARY SEWER LATERAL
 - "0" 1+165.200 LT
 - 7 "0" 1+216.500, 4.400m RT INSTALL 150mm GATE VALVE
 - 8 "0" 1+188.087, 8.000m RT TO CONSTRUCT TYPE I T-LOCK LINED SANITARY SEWER MH
 - "0" 1+212.672, 4.500m LT
 - 9 "0" 1+110.000, 6.600m RT TO CONSTRUCT 200mm WATER LINE
 - "0" 1+260.000, 6.600m RT
- MATERIALS LIST**
- 1 "0" 1+216.500, 6.600m RT INSTALL 200mm x 150mm TEE
- NOTE:**
ALL MANHOLE RIM ELEVATIONS SHALL BE FLUSH WITH FINISHED AC PAVEMENT

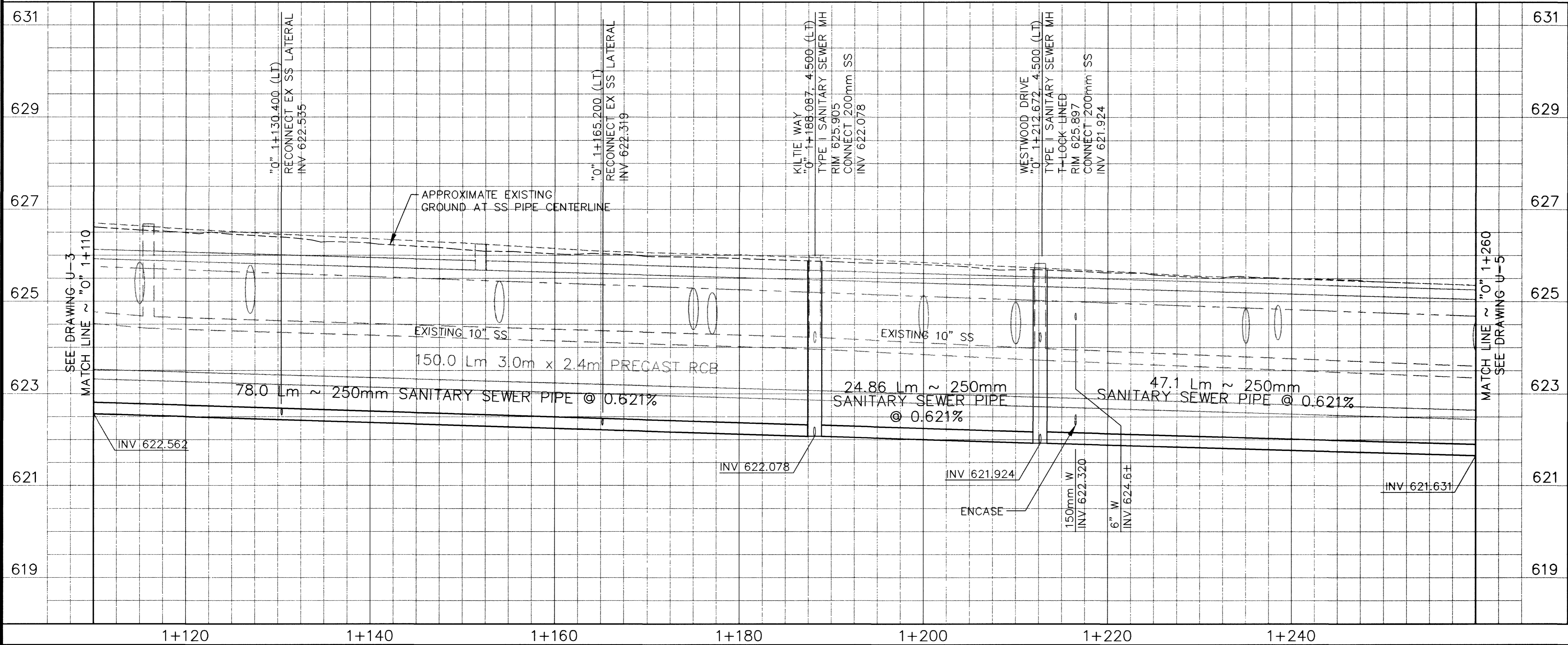
SEE DRAWING U-34 FOR SANITARY SEWER PROFILE

SEE DRAWING C-18 FOR DRAINAGE PLAN

SEE DRAWING R-12 FOR ROADWAY

APPROVED FOR CONSTRUCTION

LAS VEGAS VALLEY WATER DISTRICT DATE



Call before you Dig.
1-800-277-2600
UNDERGROUND SERVICE (USA)

Call before you Overhead
563-6111
OVERHEAD SERVICE (USA)

DATE	3/20/00	REVISIONS	APPENDIX 2	PROJECT # 31604	DESIGN BY KFN	<p>PARSONS BRINCKERHOFF Las Vegas, Nevada</p>
DATE	4/30/03	RECORD DRAWING		SCALE (V)	DATE DEC 17, 1999	
SCALE (H)	1:250	F.L.D. Bk. #	N/A			

DEPARTMENT OF PUBLIC WORKS

I-15 FREEWAY CHANNEL

UTILITY RELOCATION (OAKLEY BLVD)

"O" 1+110 TO "O" 1+260

JOHN CLARK
P.E. 1190

DRAWING No. 163

U-4

241