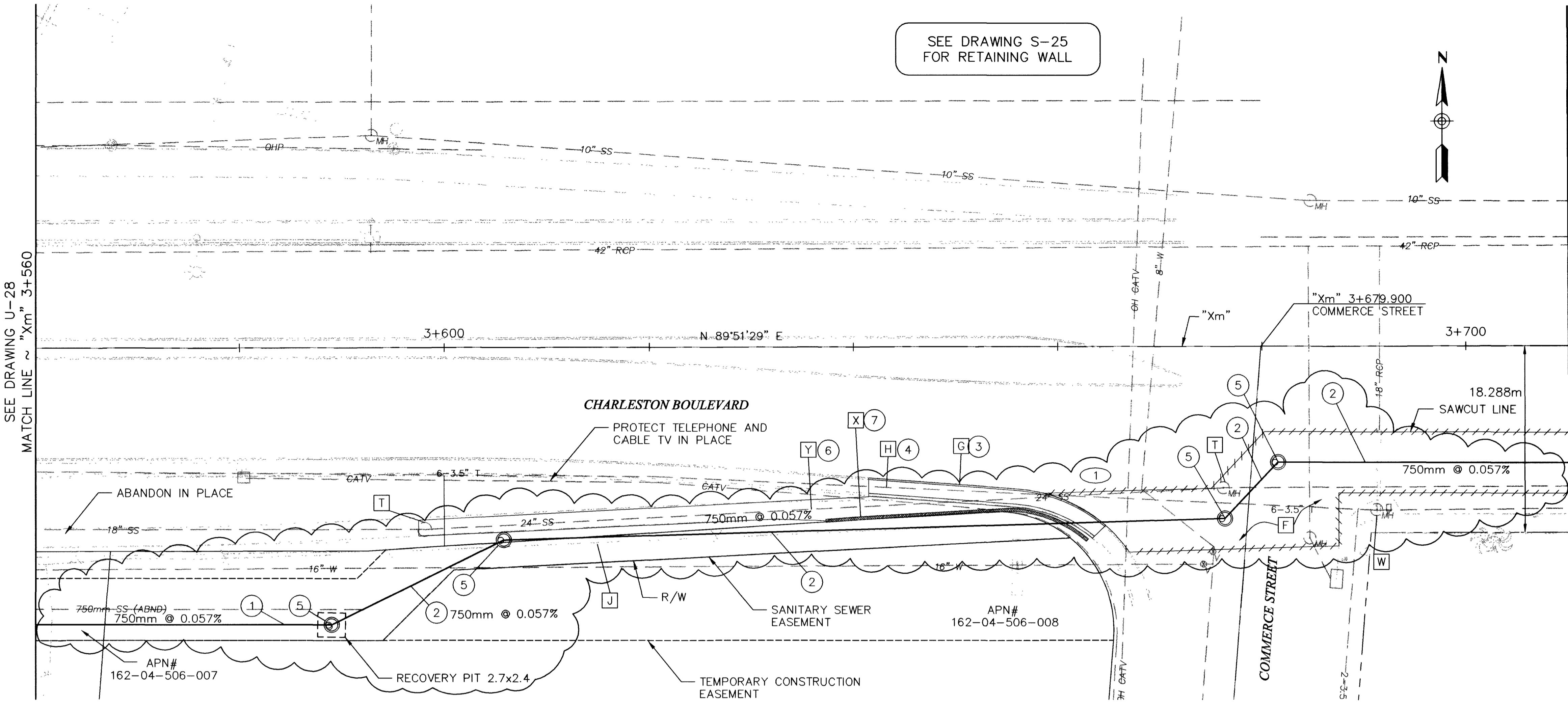
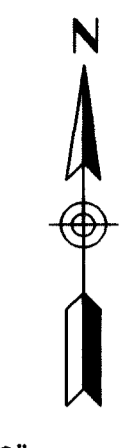
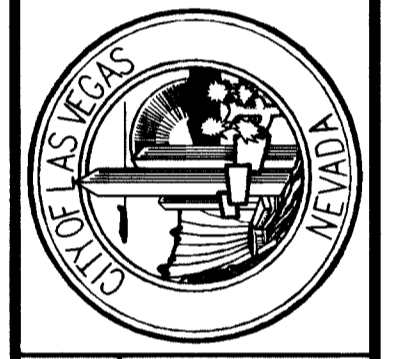


SEE DRAWING S-25  
FOR RETAINING WALL



- REMOVAL ITEMS**
- F REMOVE AC PAVEMENT
  - G REMOVE CURB AND GUTTER
  - H REMOVE SIDEWALK
  - J REMOVE CHAIN LINK FENCE
  - T REMOVE MH
  - W MAINTAIN AND RESTORE TRAFFIC SIGNAL
  - X REMOVE RETAINING WALL
  - Y REMOVE SLOPE PAVING
- CONSTRUCTION ITEMS**
- 1 "Xm" 3+560.000, 27.089 RT TO "Xm" 3+588.967, 27.144 RT CONSTRUCT 750mm SANITARY SEWER PIPE (MICROTUNNEL)
  - 2 "Xm" 3+592.000, 25.650m RT TO "Xm" 3+605.801, 18.850m RT CONSTRUCT 750mm SANITARY SEWER PIPE
  - 3 "Xm" 3+641.000, 13.000m RT TO "Xm" 3+664.000, 18.000m RT CONSTRUCT TYPE 1 CURB AND GUTTER STD DRAWING R-5.1.1
  - 4 "Xm" 3+641.000, 13.000m RT TO "Xm" 3+664.000, 18.000m RT CONSTRUCT CONCRETE SIDEWALK
  - 5 "Xm" 3+588.967, 27.144m RT TO "Xm" 3+605.801, 18.850m RT CONSTRUCT TYPE I SANITARY SEWER MH
  - 6 "Xm" 3+600.000, 18.800m RT TO "Xm" 3+656.000, 16.000m RT CONSTRUCT CLASS A CONCRETE SLOPE PAVEMENT
  - 7 "Xm" 3+637.000, 17.000m RT TO "Xm" 3+663.000, 19.000m RT CONSTRUCT CONCRETE RETAINING WALL

DATE	7/13/00
REVISIONS	1 MODIFIED 750mm SS (MICROTUNNEL)
PROJECT #	31804
SCALE (V)	1:50
SCALE (H)	1:250
DATE	DEC 17, 1999
DESIGN BY	KFN
DATE	DEC 17, 1999
DESIGN BY	KFN
DATE	DEC 17, 1999
DESIGN BY	KFN



**PARSONS BRINCKERHOFF**  
Las Vegas, Nevada

**DEPARTMENT OF PUBLIC WORKS**  
I-15 FREEWAY CHANNEL  
UTILITY RELOCATION  
"Xm" 3+560 TO "Xm" 3+710

APPROVED FOR CONSTRUCTION

LAS VEGAS VALLEY WATER DISTRICT DATE

Call before you Dig. 1-800-227-2600 UNDERGROUND SERVICE (USA)

Call before you Crane 227-2929 OVERHEAD SERVICE (USA)

