

- REMOVAL ITEMS**
- [1] REMOVE STORM DRAIN PIPE
 - [2] REMOVE STORM DRAIN PIPE
- CONSTRUCTION ITEMS**
- (1) "FC" 1+390.000 TO "FC" 1+400.965 TO CONSTRUCT DOUBLE 5.0m x 2.4m RCB
 - (2) "FC" 1+457.063 TO "FC" 1+466.182 TO CONSTRUCT JUNCTION STRUCTURE No. 1 SEE DRAWING S-9
 - (3) "FC" 1+466.182 TO "FC" 1+540.000 TO CONSTRUCT TRIPLE 3.7m x 2.7m RCB SEE DRAWING S-2
 - (4) "FC" 1+432.067, 22.368m RT TO "FC" 1+447.366, 6.170m RT TO CONSTRUCT 3.0m DI TYPE "D" MODIFIED SEE DRAWING S-7
 - (5) "FC" 1+432.067, 22.368m RT TO "FC" 1+446.884, 6.662m RT TO "FC" 1+447.366, 6.170m RT TO "FC" 1+447.366, 3.146m RT TO CONSTRUCT 600mm PVC
 - (6) "FC" 1+470.000, 5.150m RT TO "FC" 1+470.000, 5.150m LT TO "FC" 1+473.600, 1.250m RT TO CONSTRUCT RCB ACCESS MH SEE DRAWING S-19
 - (7) "FC" 1+475.947, 5.991m LT TO CONSTRUCT GAGING STATION SEE SD-26
 - (8) "FC" 1+400.965 TO "FC" 1+457.063 TO CONSTRUCT DOUBLE 5.0m x 2.4m PRECAST RCB
 - (9) "FC" 1+424.200, 5.620m LT TO "FC" 1+435.653, 5.570m RT TO CONCRETE ENCASUREMENT SEE SECTION C-C, SHEET C-30
 - (10) "FC" 1+352.000, 3.000m LT TO "FC" 1+374.000, 3.000m RT TO CONCRETE ENCASUREMENT SEE SECTION C-C, SHEET C-30

APPROVED FOR CONSTRUCTION

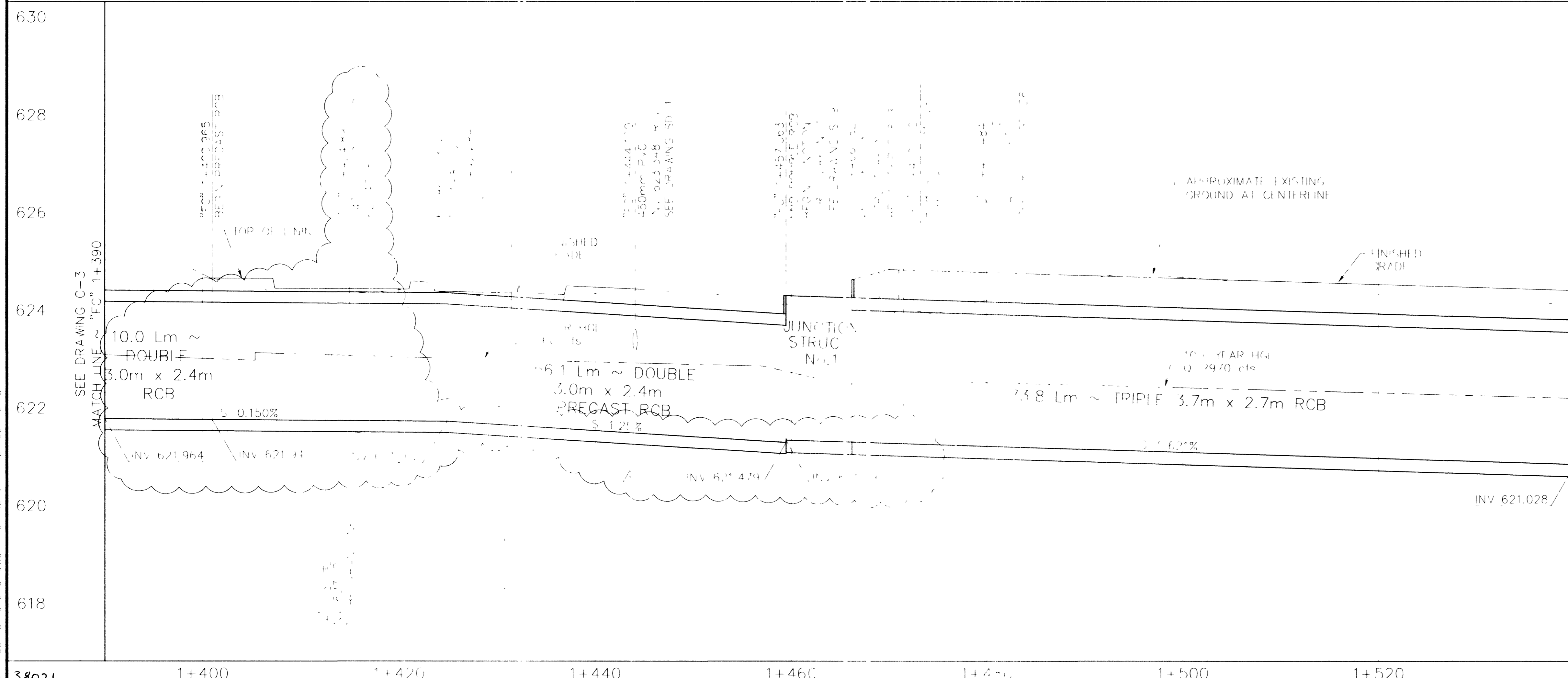
First approval 3/31/00

Nasso Halls 12/5/01

LAS VEGAS VALLEY WATER DISTRICT DATE

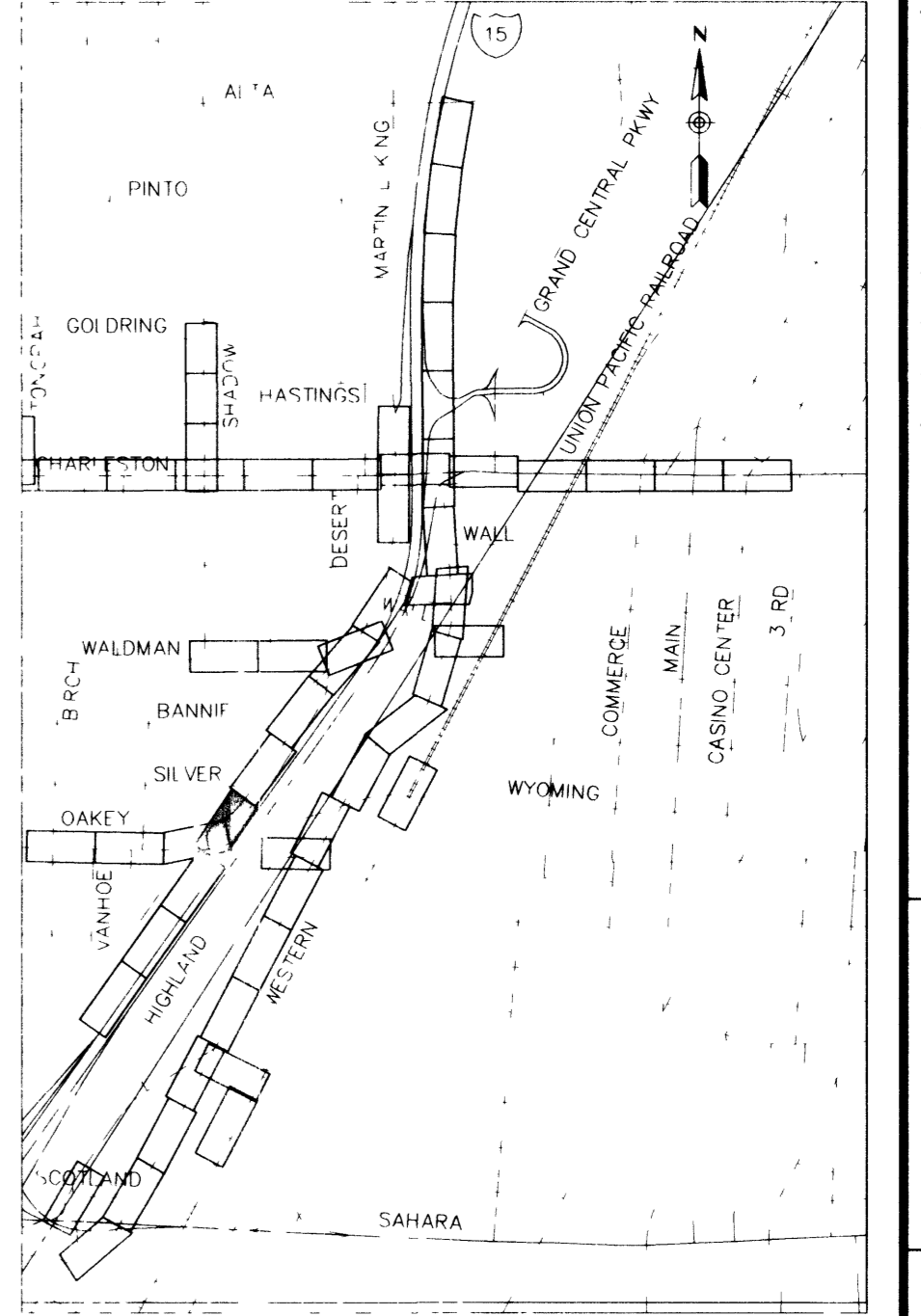
"FC" CURVE DATA

Nc	Δ	R	L	T
FC1	13°49'10"	200.000m	48.239m	24.237m



Call before you Dig.
1-800-277-2600
UNDERGROUND SERVICE (USA)

Call before you Overhead.
563-6111
OVERHEAD SERVICE (USA)



PROJECT # 31604
DESIGN BY BPP

SCALE (V) 1"=50'
DATE DECEMBER 17, 1999

SCALE (H) 1"=250'
FLD. BK. # N/A

REVISED GRADE AND ALIGNMENT OF "FC" LINE 12/05/01

PARSONS BRINCKERHOFF

DEPARTMENT OF PUBLIC WORKS

I-15 FREEWAY CHANNEL CONSTRUCTION PLAN AND PROFILE "FC" 1+390 TO "FC" 1+540

DRAWING No. 27
C-4

NEVER STATE OF NEVADA CIVIL ENGINEER JOHN W. CLARK 12/5/01