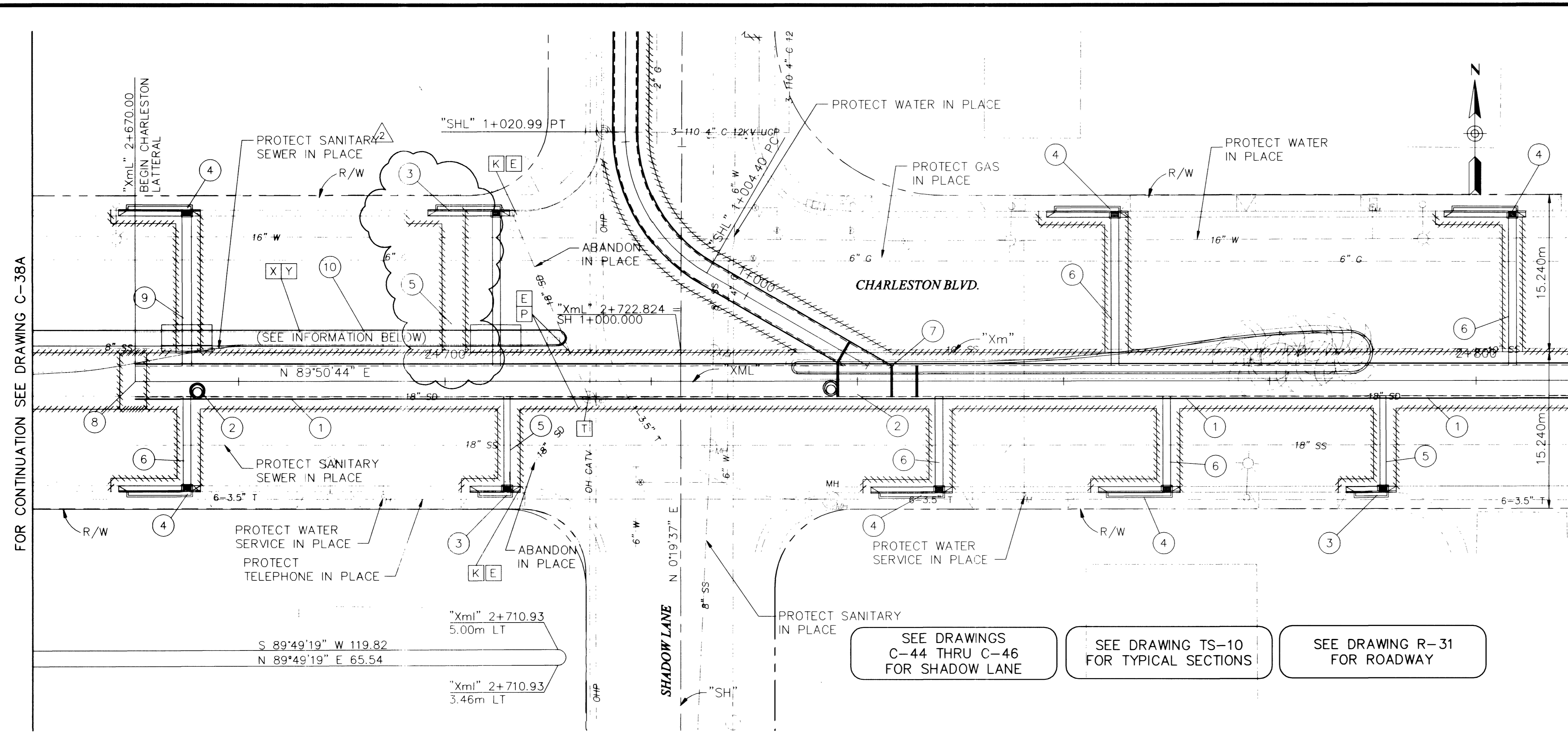


K:\31604\DI_CHARLESTON\C-39A.DWG CHANEMM 06/25/02 15.07

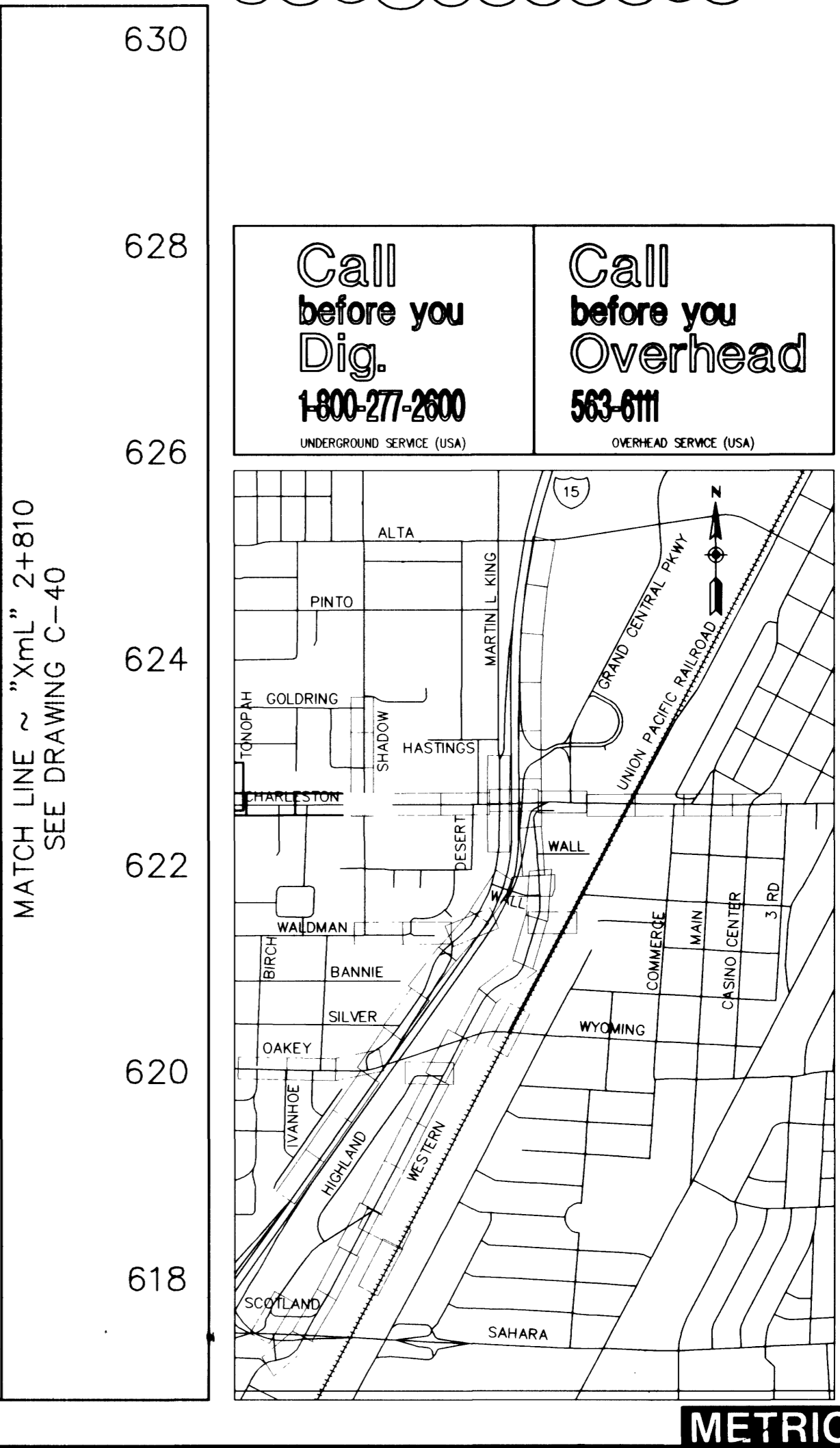
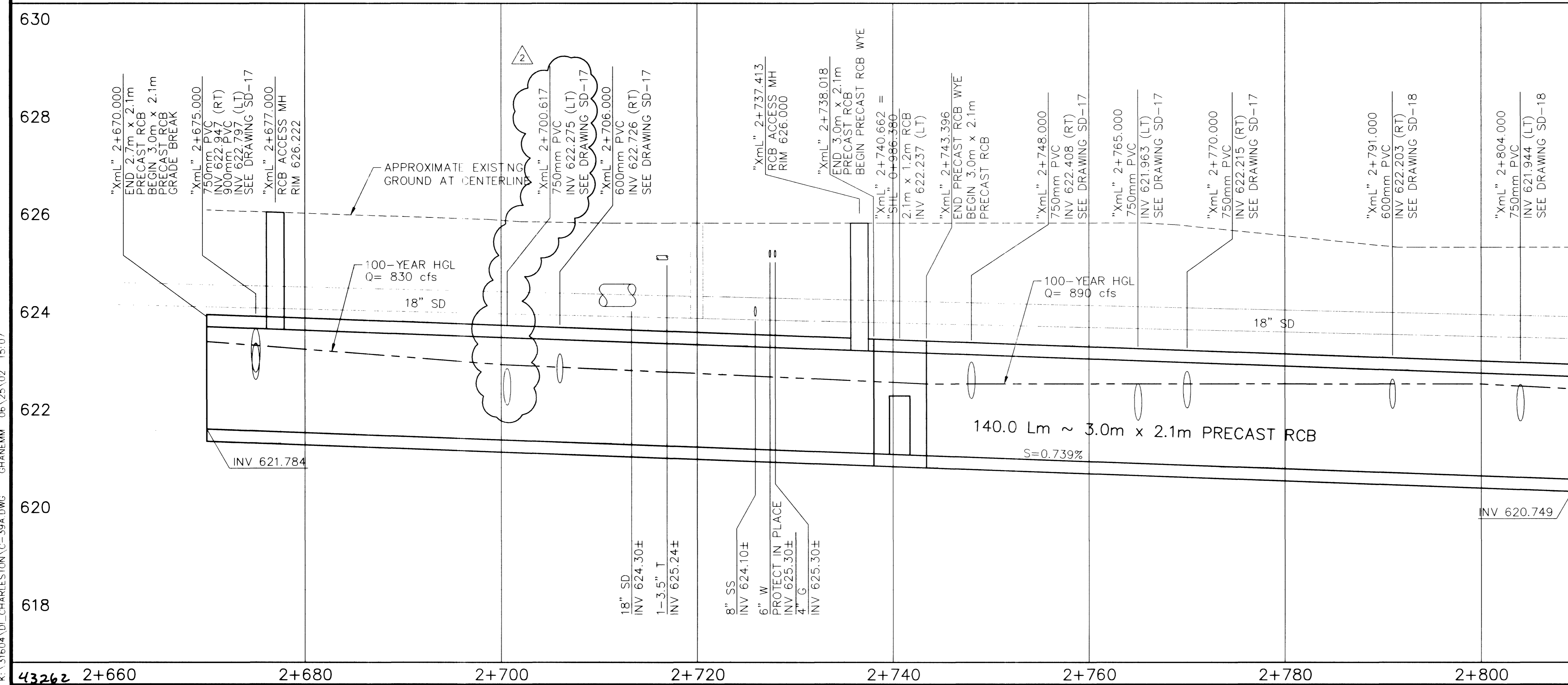


- REMOVAL ITEMS**
- [E] PLUG STORM DRAIN PIPE
 - [K] REMOVE DROP INLET
 - [P] REMOVE STORM DRAIN PIPE
 - [T] REMOVE MH
 - [X] REMOVE MEDIAN ISLAND
 - [Y] REMOVE/RELOCATE PALM TREES/LANDSCAPES
- CONSTRUCTION ITEMS**
- 1 "XmL" 2+670.000 TO 2+740.456 PRECAST RCB ACCESS MH
"XmL" 2+745.834 TO 2+810.000
 - 2 "XmL" 2+676.000, 0.901m RT CONSTRUCT RCB ACCESS MH
"XmL" 2+743.851, 0.666m RT (SEE DRAWING S-20)
 - 3 "XmL" 2+700.617, 16.529m LT CONSTRUCT 3.0m DI TYPE "D" MOD.
"XmL" 2+706.000, 10.662m RT SEE DRAWING S-7
"XmL" 2+791.000, 10.733m RT
 - 4 "XmL" 2+675.000, 16.550m RT CONSTRUCT 6.0m DI TYPE "D" MOD.
"XmL" 2+675.000, 10.606m LT SEE DRAWING S-7
"XmL" 2+748.000, 10.743m RT
"XmL" 2+765.000, 16.362m LT
"XmL" 2+770.000, 10.719m RT
"XmL" 2+804.000, 16.329m LT
 - 5 "XmL" 2+700.617, 16.104m LT TO CONSTRUCT 600mm PVC
"XmL" 2+700.617, 1.500m LT
"XmL" 2+706.000, 10.237m RT TO
"XmL" 2+706.000, 1.500m RT
"XmL" 2+791.000, 10.308m RT TO
"XmL" 2+791.000, 1.500m RT
 - 6 "XmL" 2+675.000, 10.181m RT TO CONSTRUCT 750mm PVC
"XmL" 2+675.000, 1.500m RT
"XmL" 2+748.000, 10.324m RT TO
"XmL" 2+748.000, 1.500m RT
"XmL" 2+765.000, 15.937m LT TO
"XmL" 2+765.000, 1.500m LT
"XmL" 2+770.000, 10.294m RT TO
"XmL" 2+770.000, 1.500m RT
"XmL" 2+804.000, 15.904m LT TO
"XmL" 2+804.000, 1.500m LT
 - 7 "XmL" 2+740.456 TO CONSTRUCT PRECAST RCB WYE
"XmL" 2+745.834
 - 8 "XmL" 2+670.000 CONSTRUCT RCB PLUG
NDOT STD DRAWING B-20.1.7.
 - 9 "XmL" 2+675.000, 16.125m LT TO CONSTRUCT 900mm PVC
"XmL" 2+675.000, 1.500m LT
 - 10 "XmL" 2+680.00 TO CONSTRUCT NEW TACK-ON
"XmL" 2+711.70 MEDIAN ISLAND PER USD 220

SEE DRAWINGS C-44 THRU C-46 FOR SHADOW LANE

SEE DRAWING TS-10 FOR TYPICAL SECTIONS

SEE DRAWING R-31 FOR ROADWAY



Call before you Dig. 1-800-277-2600 UNDERGROUND SERVICE (USA)

Call before you Overhead 563-6111 OVERHEAD SERVICE (USA)

DATE	REVISIONS
3/30/00	ADDENDUM 2
4/12/01	REVISE DURING CONSTRUCTION
6/25/02	REVISE DURING CONSTRUCTION

DEPARTMENT OF PUBLIC WORKS

I-15 FREEWAY CHANNEL

CONSTRUCTION PLAN AND PROFILE

"XmL" 2+670 TO "XmL" 2+810

PARSONS BRINCKERHOFF
Las Vegas, Nevada

SCALE (H) 1:250
SCALE (V) 1:50
PROJECT # 31604
DESIGN BY BPP
DATE MAY 21, 2002

FLD. BK. # N/A

62

C-39

241