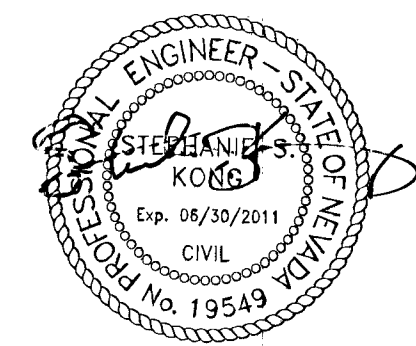
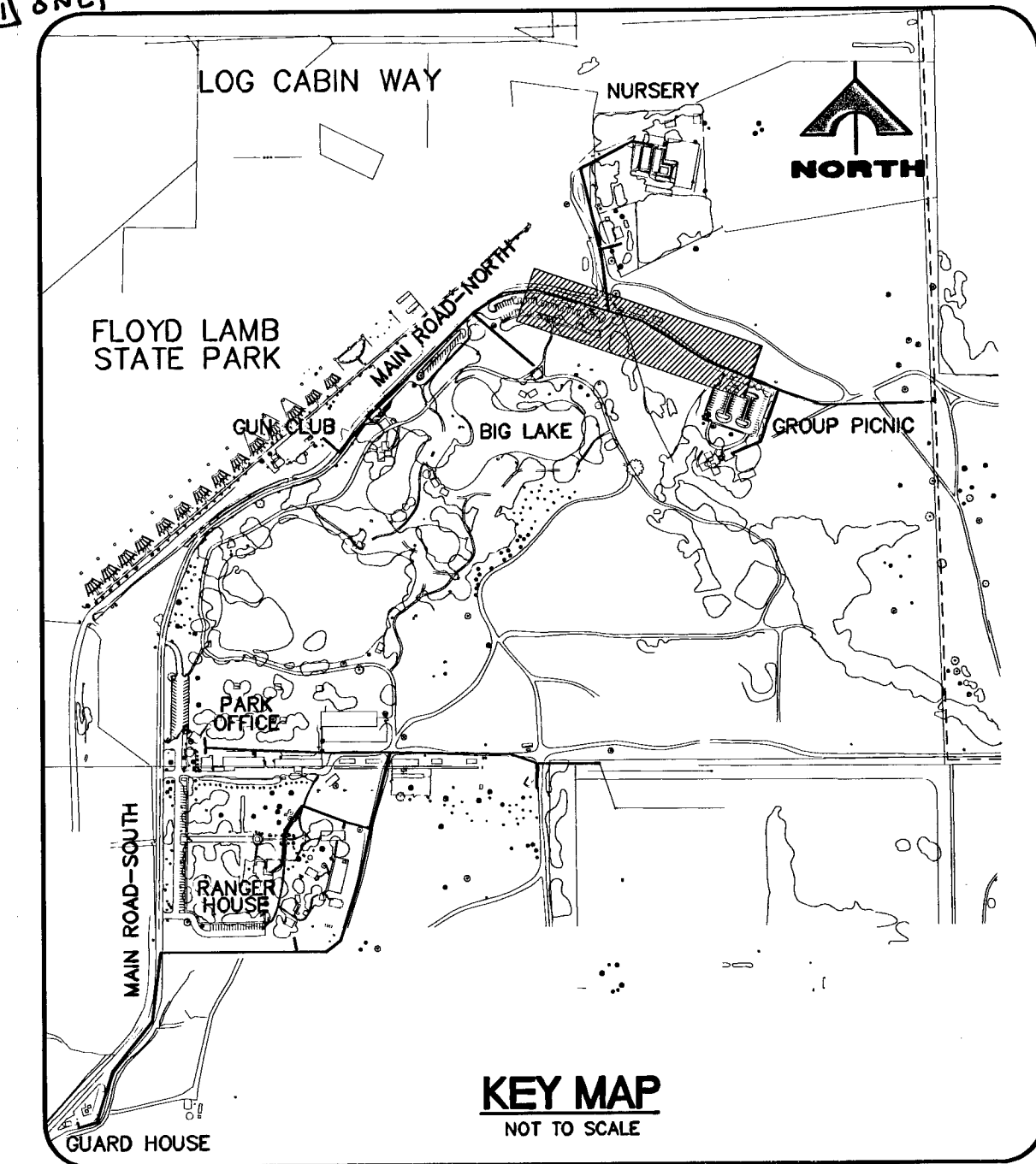
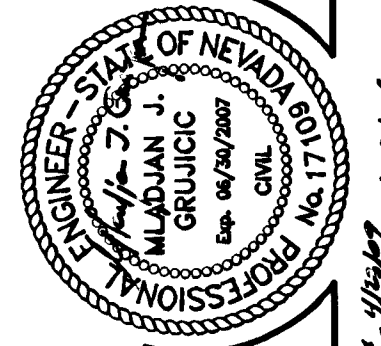
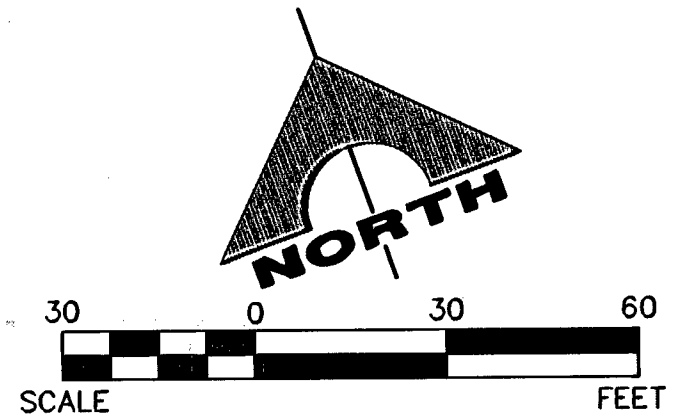


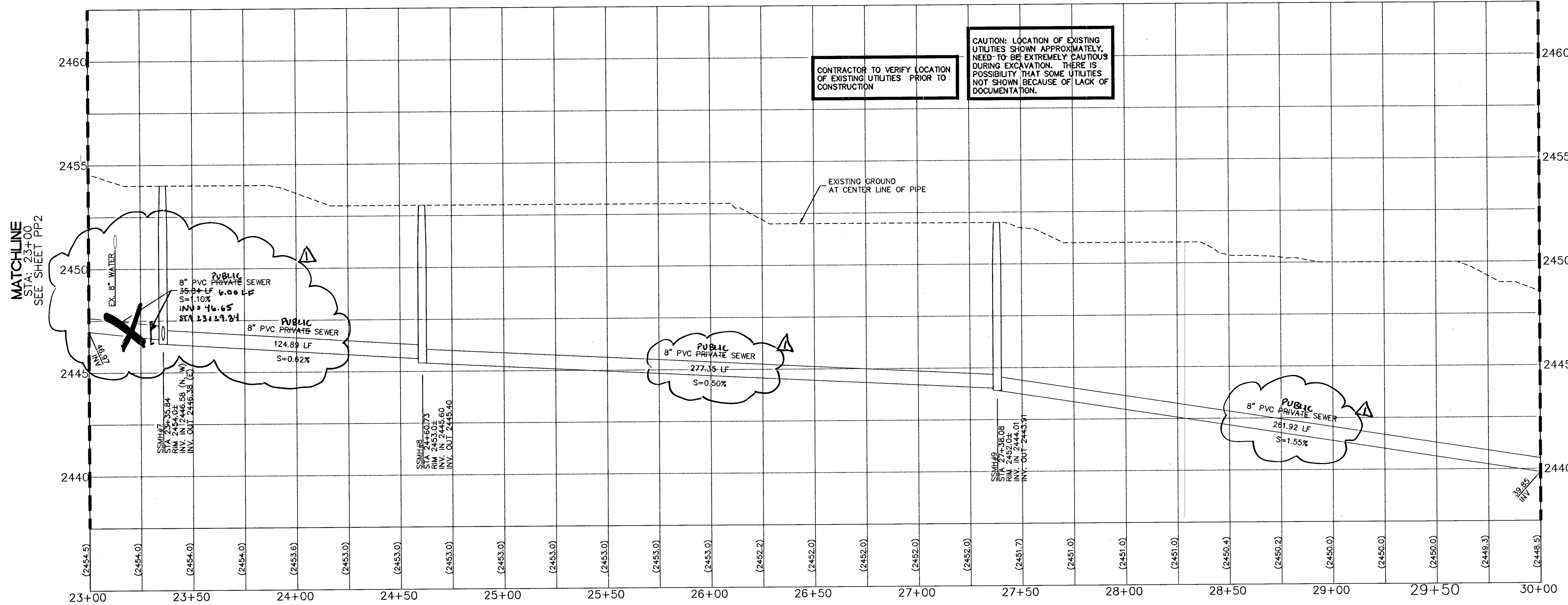
**MAIN ROAD-NORTH
PLAN AND PROFILE**
SCALE
HORIZ. 1" = 30'
VERT. 1" = 3'



4/22/09
FOR REV ONLY



KEY MAP
NOT TO SCALE



CAUTION: LOCATION OF EXISTING UTILITIES SHOWN APPROXIMATELY. NEED TO BE EXTREMELY CAUTIOUS DURING EXCAVATION. THERE IS POSSIBILITY THAT SOME UTILITIES NOT SHOWN BECAUSE OF LACK OF DOCUMENTATION.

CONTRACTOR TO VERIFY LOCATION OF EXISTING UTILITIES PRIOR TO CONSTRUCTION

SEWER NOTES

- 1. INSTALL SEWER MAIN. TRENCH SECTION BACKFILL PER CORRIDOR DWG. S08
- 2. INSTALL 48" SANITARY SEWER MANHOLE PER CORRIDOR DWG. S01.
- 3. STUB AND PLUG FOR FUTURE USE.
- 4. CONNECT TO EXISTING 8" PVC SEWER
- 5. REMOVE EXISTING MANHOLE AND SEPTIC TANK. INSTALL NEW CLEAN OUT. CONTRACTOR TO VERIFY ELEVATION OF EXISTING CONNECTION POINT PRIOR TO CONSTRUCTION
- 6. CONNECT TO EXISTING CLEAN OUT. CONTRACTOR TO VERIFY ELEVATION OF EXISTING CONNECTION POINT PRIOR TO CONSTRUCTION
- 7. STRAIGHT GRADE BETWEEN MANHOLE AND CLEAN OUT AT 1% MINIMUM.

SEWER CONNECTION NOTE

A SEGMENT OF THE DOWNSTREAM SEWER SYSTEM THAT WILL SERVE THIS PROJECT HAS NOT BEEN COMPLETED AND/OR ACCEPTED FOR MAINTENANCE BY THE CITY OF LAS VEGAS. ANY WORK DONE ON THIS PROJECT PRIOR TO COMPLETION AND/OR ACCEPTANCE OF THE DOWNSTREAM SEWER SYSTEM(S) SHALL BE DONE AT THE DEVELOPER'S OWN RISK. THE CITY OF LAS VEGAS RESERVES THE RIGHT TO PREVENT THE PHYSICAL CONNECTION OF THIS PROJECT INTO THE DOWNSTREAM SEWER SYSTEM UNTIL ALL SEGMENTS HAVE BEEN COMPLETED AND ACCEPTED FOR MAINTENANCE, OR UNTIL SUCH TIME AS THEY HAVE BEEN DEEMED AVAILABLE FOR SERVICE.

ALL SEWER/STORM DRAINS CROSSING WATER LINES MUST CONFORM TO SECTION 2.19 OF THE UNIFORM DESIGN AND CONSTRUCTION STANDARDS FOR POTABLE WATER SYSTEMS (UDACS) FOR WATER AND STORM MAIN CROSSING AND CLEARANCES. ESN.064

NOTICE
G.C. WALLACE, INC. ASSUME NO RESPONSIBILITY FOR EXISTING UTILITY SHOWN OR NOT SHOWN. THE UTILITIES SHOWN ON THIS DRAWING HAVE BEEN PLOTTED FROM RECORD INFORMATION AND ARE FOR THE CONVENIENCE OF THE CONTRACTOR ONLY. IT IS THE CONTRACTOR'S RESPONSIBILITY TO FIELD VERIFY THE LOCATION AND DEPTH OF ALL RELEVANT UTILITIES PRIOR TO COMMENCEMENT OF CONSTRUCTION. IF A CONFLICT OR DISCREPANCY IS DISCOVERED, THE CONTRACTOR SHALL NOTIFY THE ENGINEER IN WRITING IMMEDIATELY.

BENCHMARK
CITY OF LAS VEGAS VERTICAL CONTROL
CITY OF LAS VEGAS BM #LLV904N4 1/4 CORNER, BLM 1990 D MOCCASIN AND CIMMARON
ELEVATION: 759.8707 METERS (NAV088)
2493.01 FEET

BASIS OF BEARINGS
NORTH 00°28'28" WEST BEING THE BEARING OF THE WEST LINE OF THE NORTHWEST QUARTER (NW1/4) OF SECTION 4, TOWNSHIP 19 SOUTH, RANGE 60 EAST, M.D.M. CITY OF LAS VEGAS, CLARK COUNTY, NEVADA, AS SHOWN BY MAP THEREOF ON FILE IN FILE 105, PAGE 09 OF PARCEL MAPS IN THE CLARK COUNTY RECORDER'S OFFICE, CLARK COUNTY, NEVADA.

Call before you Dig.
1-800-227-2600
UNDERGROUND SERVICE (USA)

Call before you dig.
1-702-227-2929

Call before you dig.
UnderGround
1-702-455-7511
CLARK COUNTY TRAFFIC OPERATIONS
1-702-229-6611
LAS VEGAS AREA COMPUTERIZED TRAFFIC SYSTEM

DESIGN:	HAN
DRAWN:	HAN
CHECK:	MAG
ISSUE DATE:	
ISSUE DATE:	05-04-06
PLOT DATE:	05-04-06
PLOT TIME:	13:42:23

G.C. WALLACE, INC.
Engineers/Planners/Surveyors
1555 SOUTH RAINBOW BLVD./LAS VEGAS, NEVADA 89146
TELEPHONE: (702) 804-2000 • FAX: (702) 804-2269
H:\0401767-012\0401767.dwg\Improva\STATE PARK SEWER\PLAN - SWR-PP.dwg

DR. HORTON, INC.
LOG CABIN RANCH - SEWER THRU FLOYD LAMB STATE PARK
MAIN ROAD-NORTH - PLAN AND PROFILE 3 OF 4
STA. 28+00 TO STA. 30+00

DRAWING
PP3
5 OF 14 SHTS

116866
9174321