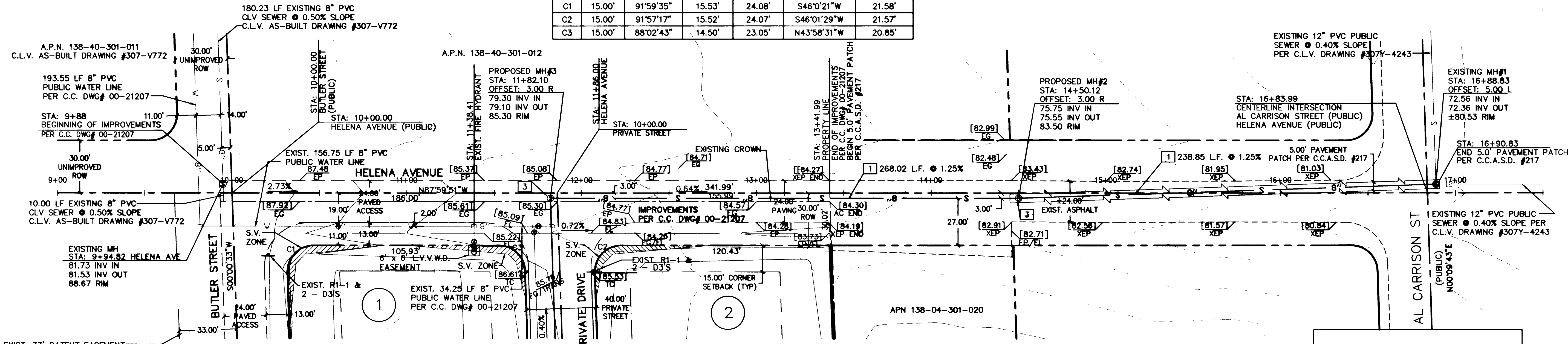
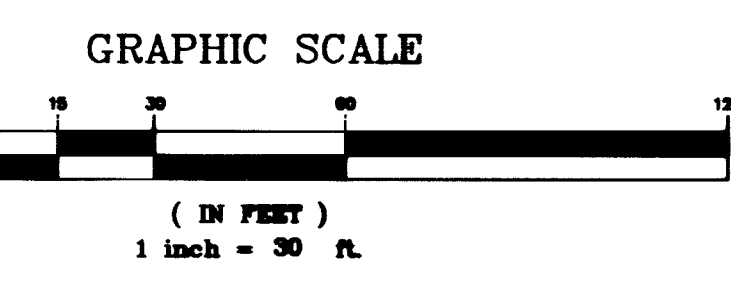


CURVE	RADIUS	DELTA	TANGENT	LENGTH	CHORD BRG.	CHORD DIST.
C1	15.00'	91°59'35"	15.53'	24.08'	S46°0'21"W	21.58'
C2	15.00'	91°57'17"	15.52'	24.07'	S46°0'29"W	21.57'
C3	15.00'	88°02'43"	14.50'	23.05'	N43°58'31"W	20.85'



EXIST. 33' PATENT EASEMENT FOR ROADWAY & UTILITY PURPOSES PATENT #1224664 - DATED 12/28/1961



ABBREVIATIONS

- APN ASSESSORS PARCEL NUMBER
- BCR BACK OF CURB RETURN
- BOB BOTTOM OF BANK
- C.C. CLARK COUNTY
- C.C.A.S.D. CLARK COUNTY AREA STANDARDS
- C.L.V. CITY OF LAS VEGAS
- EG EXIST. GRADE
- FF FINISH FLOOR
- FG FINISH GRADE
- FL FLOW
- FP FINISH PAD
- GB GRADE BREAK
- HP HIGH POINT
- LP LOW POINT
- PC POINT OF CURVATURE
- PL PROPERTY LINE
- ROW RIGHT OF WAY
- TC TOP OF CURB
- TOB TOP OF BANK

GENERAL UTILITY NOTES

- ALL DIMENSIONS TO UTILITIES ARE TO CENTERLINE OF PIPE UNLESS INDICATED OTHERWISE.
- CONTRACTOR SHALL VERIFY HORIZONTAL AND VERTICAL ALIGNMENT OF EXISTING UTILITIES AND NOTIFY THE DESIGN ENGINEER IMMEDIATELY ON ANY DISCREPANCIES PRIOR TO CONSTRUCTION.

OWNER/DEVELOPER

THOMAS HORITO
4016 NORTH TENAYA WAY, STE 200
LAS VEGAS, NV 89129

LEGEND

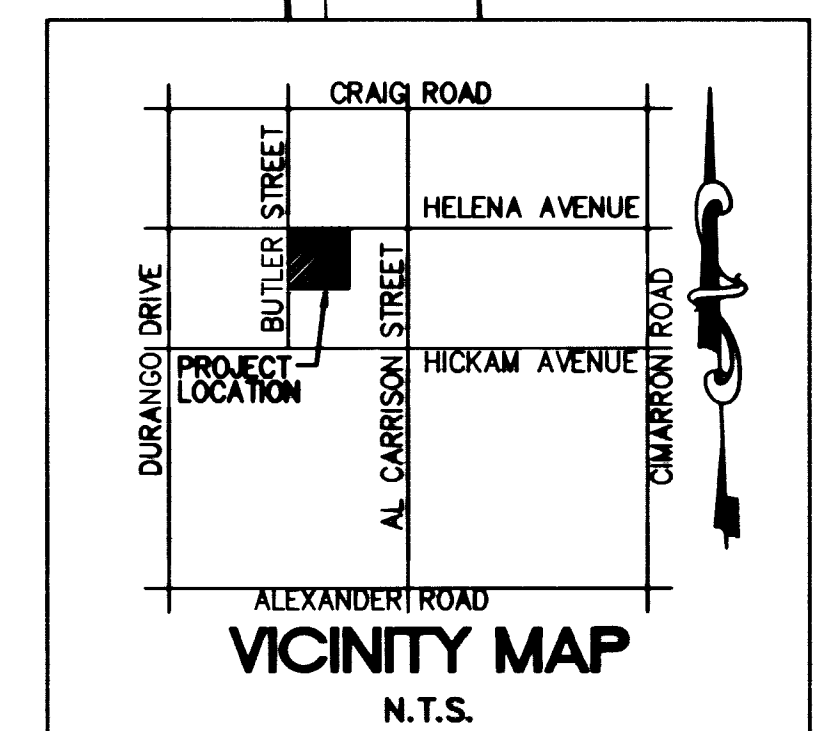
- EXISTING FIRE HYDRANT
- WATER VALVE
- SANITARY MANHOLE
- PROPERTY LINE
- STREET CENTERLINE
- EXIST. BLOCK WALL
- SETBACK LINE
- EASEMENT LINE
- EXISTING SEWER LINE
- PROPOSED SEWER LINE
- EXISTING WATER LINE

BENCHMARK

C.C.B.M.# 1000/4W6
RIVET AND SQUARE ALUMINUM PLATE IN AN ELECTRIC TRANSFORMER PAD, 175.00' WEST OF AL CARRISON ST. ON THE SOUTH SIDE OF CRAIG ROAD.
NAVD88 ELEVATION: 2384.56 FEET

BASIS OF BEARING

NORTH 87° 49' 40" WEST - BEING THE SOUTH LINE OF THE NORTHWEST QUARTER (NW 1/4) OF THE SOUTHWEST QUARTER (SW 1/4) OF SECTION 4, TOWNSHIP 22 SOUTH, RANGE 60 EAST, M.D.M., CLARK COUNTY, NEVADA, AS SHOWN PER PARCEL MAP RECORDED IN FILE 49, PAGE 14, CLARK COUNTY RECORDS, NEVADA.



NOTICE!

CALL BEFORE YOU Dig

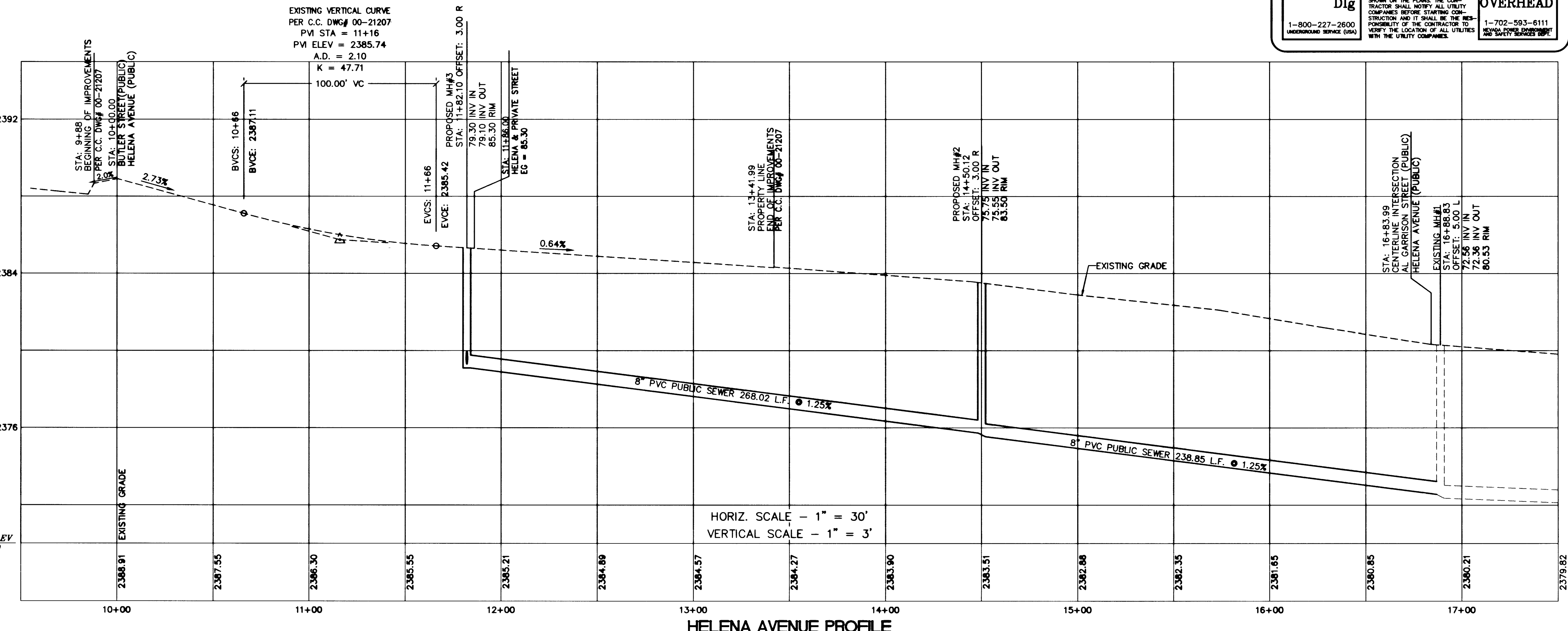
EXISTING UTILITIES ARE LOCATED ON THE PLANS FOR THE CONFORMANCE OF THE CONTRACTOR ONLY. THE ENGINEER BEARS NO RESPONSIBILITY FOR THE LOCATION OF UTILITIES SHOWN OR NOT SHOWN ON THE PLANS. THE CONTRACTOR SHALL NOTIFY ALL UTILITY COMPANIES BEFORE STARTING CONSTRUCTION AND IT SHALL BE THE RESPONSIBILITY OF THE CONTRACTOR TO VERIFY THE LOCATION OF ALL UTILITIES WITH THE UTILITY COMPANIES.

CALL BEFORE YOU OVERHEAD

EXISTING OVERHEAD POWER LINE CONTACT.

1-800-227-2600 UNDERGROUND SERVICE (USA)

1-702-593-6111 NEWARK POWER MANAGEMENT (NEWARK POWER)



HORIZ. SCALE - 1" = 30'
VERTICAL SCALE - 1" = 3'

REVISIONS

NO.	DATE	BY	REVISION

THE CONTRACTOR SHALL CHECK AND VERIFY ALL DIMENSIONS AND REPORT ALL ERRORS TO THE ENGINEER IMMEDIATELY. THE ENGINEER SHALL BE RESPONSIBLE FOR THE ACCURACY OF THE PLANS. THE CONTRACTOR SHALL BE RESPONSIBLE FOR THE LOCATION OF UTILITIES SHOWN OR NOT SHOWN ON THE PLANS. THE CONTRACTOR SHALL NOTIFY ALL UTILITY COMPANIES BEFORE STARTING CONSTRUCTION AND IT SHALL BE THE RESPONSIBILITY OF THE CONTRACTOR TO VERIFY THE LOCATION OF ALL UTILITIES WITH THE UTILITY COMPANIES.

RedRock
ENGINEERING & SURVEYING, INC.
2001 SOUTH RAINBOW BLVD., STE. K
LAS VEGAS, NEVADA 89146
PHONE (702) 363-8188

HELENA AVE & BUTLER STREET
SEWER LINE EXTENSION
SEWER PLAN & PROFILE - HELENA STREET
CLARK COUNTY, NEVADA

DRAWN BY : M.B.
DESIGNED BY : M.B.
CHECKED BY : M.D.C.
DATE : 05/23/2001
JOB # : 20007
APN : MULTIPLE
SECT 04 : T 20 S R 60 E
SCALE : HORIZ 1" = 30'
VERT 1" = 3'



SHEET #
C4
4 OF 5
CLV-DWG# 307-V 845

I: 20007/CLV007-PP1 F1 Jun 01 09:19:01 2001 BY M.B.