

STA: 3+34.23  
CRAIG ROAD  
(PUBLIC)

CURVE	RADIUS	DELTA	TANGENT	LENGTH
C1	15.00'	91°59'36"	15.53'	24.08'
C2	15.00'	91°57'17"	15.52'	24.07'
C3	15.00'	88°02'43"	14.50'	23.05'
C4	19.50'	48°49'38"	8.85'	16.62'
C5	40.50'	50°49'16"	19.24'	35.92'
C6	40.50'	88°00'22"	39.11'	62.21'
C7	40.50'	91°59'38"	41.93'	65.03'
C8	40.50'	46°50'00"	17.54'	33.10'

STA: 8+15.68  
EXISTING MANHOLE  
EXISTING INV IN = 80.63  
EXISTING INV OUT = 80.43  
STA: 8+24.80  
REMOVE EXISTING 2" BLOW-OFF  
CONNECT TO EXISTING 8" PVC  
WATER LINE

A.P.N. 138-40-301-011  
C.L.V. AS-BUILT DRAWING #307-V772

180.23 LF EXISTING 8" PVC  
CLV SEWER @ 0.50% SLOPE  
C.L.V. AS-BUILT DRAWING #307-V772

A.P.N. 138-40-301-012

EXISTING MH  
STA: 9+94.76 BUTLER ST.  
STA: 9+94.82 HELENA AVE  
81.73 INV IN  
81.53 INV OUT  
88.67 RIM

PROPOSED MH#3  
HELENA AVENUE  
STA: 11+82.10  
OFFSET: 3.00 R  
PRIVATE DRIVE  
STA: 10+02.87  
85.30 RIM  
79.30 INV IN  
79.10 INV OUT

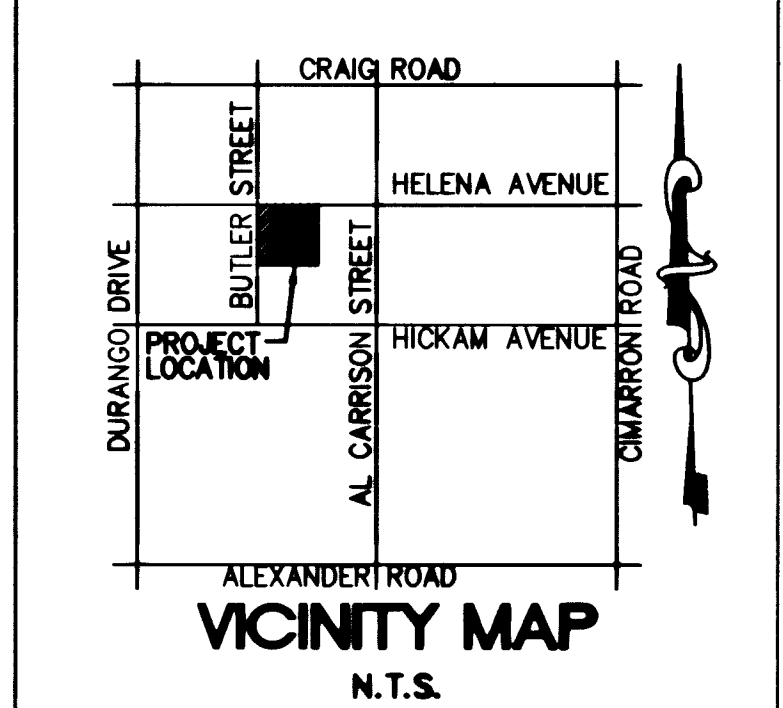
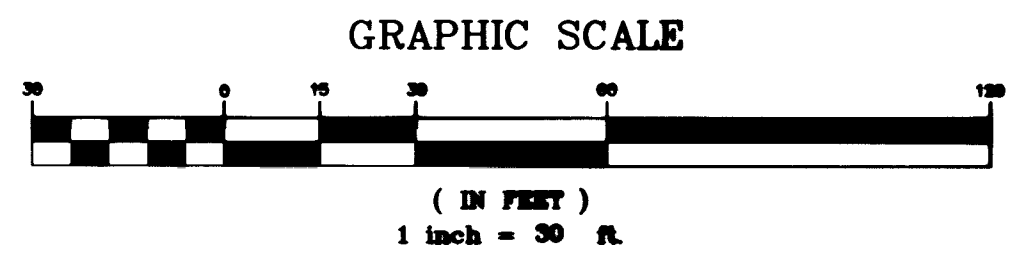
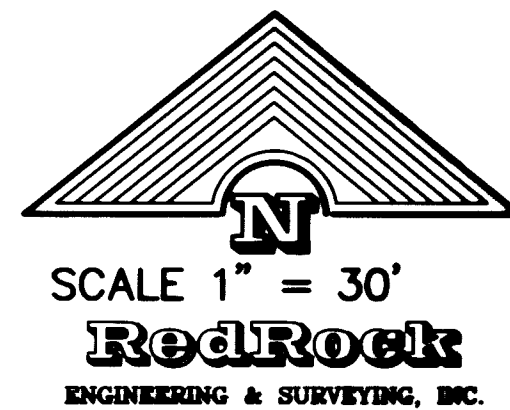
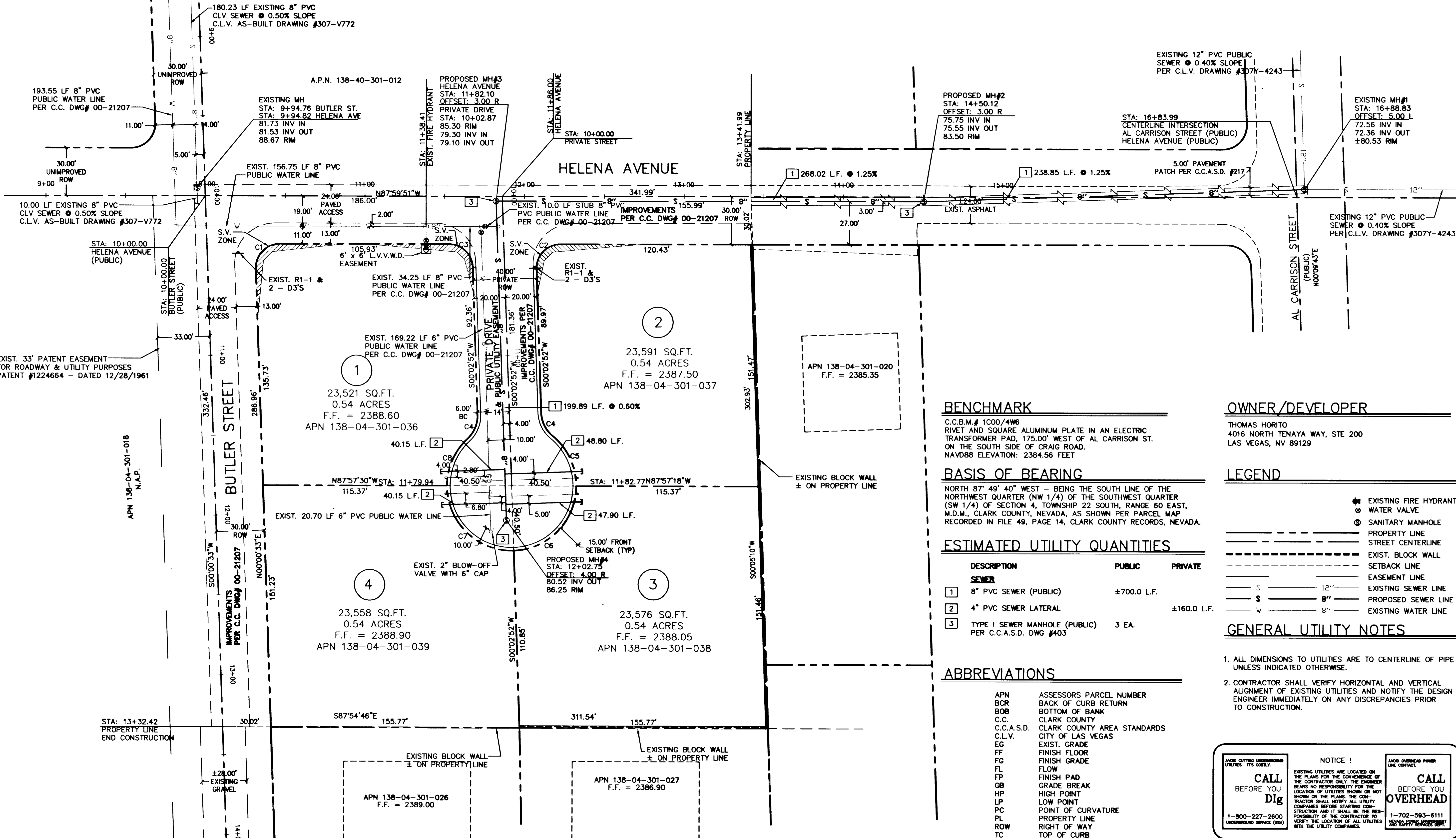
STA: 11+86.00  
HELENA AVENUE  
STA: 10+00.00  
PRIVATE STREET

PROPOSED MH#2  
STA: 14+50.12  
OFFSET: 3.00 R  
75.75 INV IN  
75.55 INV OUT  
83.50 RIM

STA: 16+83.99  
CENTERLINE INTERSECTION  
AL CARRISON STREET (PUBLIC)  
HELENA AVENUE (PUBLIC)

EXISTING MH#1  
STA: 16+88.83  
OFFSET: 5.00 L  
72.56 INV IN  
72.36 INV OUT  
±80.53 RIM

EXISTING 12" PVC PUBLIC  
SEWER @ 0.40% SLOPE  
PER C.L.V. DRAWING #307Y-4243



**BENCHMARK**

C.C.B.M.# 1000/4W6  
RIVET AND SQUARE ALUMINUM PLATE IN AN ELECTRIC  
TRANSFORMER PAD, 175.00' WEST OF AL CARRISON ST.  
ON THE SOUTH SIDE OF CRAIG ROAD.  
NAVD88 ELEVATION: 2384.56 FEET

**BASIS OF BEARING**

NORTH 87° 49' 40" WEST - BEING THE SOUTH LINE OF THE  
NORTHWEST QUARTER (NW 1/4) OF THE SOUTHWEST QUARTER  
(SW 1/4) OF SECTION 4, TOWNSHIP 22 SOUTH, RANGE 60 EAST,  
M.D.M., CLARK COUNTY, NEVADA, AS SHOWN PER PARCEL MAP  
RECORDED IN FILE 49, PAGE 14, CLARK COUNTY RECORDS, NEVADA.

**ESTIMATED UTILITY QUANTITIES**

DESCRIPTION	PUBLIC	PRIVATE
SEWER		
1 8" PVC SEWER (PUBLIC)	±700.0 L.F.	
2 4" PVC SEWER LATERAL		±160.0 L.F.
3 TYPE I SEWER MANHOLE (PUBLIC)	3 EA.	

PER C.C.A.S.D. DWG #403

**ABBREVIATIONS**

APN	ASSESSORS PARCEL NUMBER
BCR	BACK OF CURB RETURN
BOB	BOTTOM OF BANK
C.C.	CLARK COUNTY
C.C.A.S.D.	CLARK COUNTY AREA STANDARDS
C.L.V.	CITY OF LAS VEGAS
EG	EXIST. GRADE
FF	FINISH FLOOR
FG	FINISH GRADE
FL	FLOW
FP	FINISH PAD
GB	GRADE BREAK
HP	HIGH POINT
LP	LOW POINT
PC	POINT OF CURVATURE
PL	PROPERTY LINE
ROW	RIGHT OF WAY
TC	TOP OF CURB
TOB	TOP OF BANK

**OWNER/DEVELOPER**

THOMAS HORITO  
4016 NORTH TENAYA WAY, STE 200  
LAS VEGAS, NV 89129

**LEGEND**

- EXISTING FIRE HYDRANT
- ⊙ WATER VALVE
- ⊙ SANITARY MANHOLE
- PROPERTY LINE
- STREET CENTERLINE
- EXIST. BLOCK WALL
- SETBACK LINE
- EASEMENT LINE
- EXISTING SEWER LINE
- PROPOSED SEWER LINE
- EXISTING WATER LINE

**GENERAL UTILITY NOTES**

- ALL DIMENSIONS TO UTILITIES ARE TO CENTERLINE OF PIPE UNLESS INDICATED OTHERWISE.
- CONTRACTOR SHALL VERIFY HORIZONTAL AND VERTICAL ALIGNMENT OF EXISTING UTILITIES AND NOTIFY THE DESIGN ENGINEER IMMEDIATELY ON ANY DISCREPANCIES PRIOR TO CONSTRUCTION.

**CALL BEFORE YOU Dig**

1-800-227-2600  
UTILITY SERVICE (USA)

**NOTICE!**

EXISTING UTILITIES ARE LOCATED ON THE PLANS FOR THE CONVENIENCE OF THE CONTRACTOR ONLY. THE CONTRACTOR BEARS NO RESPONSIBILITY FOR THE LOCATION OF UTILITIES SHOWN OR NOT SHOWN ON THE PLANS. THE CONTRACTOR SHALL NOTIFY ALL UTILITY COMPANIES BEFORE STARTING CONSTRUCTION AND IT SHALL BE THE RESPONSIBILITY OF THE CONTRACTOR TO VERIFY THE LOCATION OF ALL UTILITIES WITH THE UTILITY COMPANIES.

**CALL BEFORE YOU OVERHEAD**

1-702-593-6111  
NEVADA POWER CORPORATION  
AND SAFETY SERVICES DEPT.

DATE:	03/23/2001
BY:	M.B.
REVISION:	

**RedRock**  
ENGINEERING & SURVEYING, INC.

2001 SOUTH RAINBOW BLVD., STE. X  
LAS VEGAS, NEVADA 89146  
PHONE (702) 363-8166

**HELENA AVE & BUTLER STREET  
SEWER EXTENSION  
SEWER PLAN**

CLARK COUNTY, NEVADA

DRAWN BY:	M.B.
DESIGNED BY:	M.B.
CHECKED BY:	M.D.C.
DATE:	03/23/2001
JOB #:	20007
APN:	MULTIPLE
SECT 04:	T 20 S R 60 E
SCALE:	HORIZ 1" = 30' VERT 1" = 3'



**SHEET #**  
**C3**  
3 OF 5  
CLV-DWG# 307-V806