

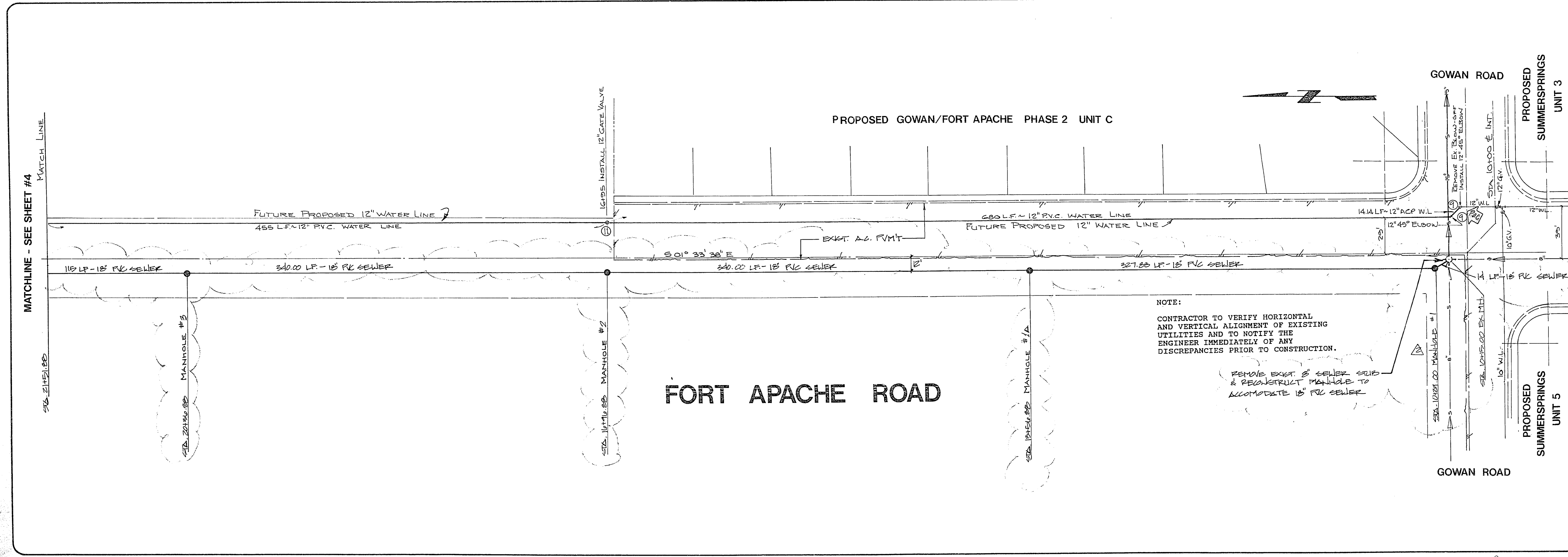
NOTE:  
 CONTRACTOR TO VERIFY HORIZONTAL  
 AND VERTICAL ALIGNMENT OF EXISTING  
 UTILITIES AND TO NOTIFY THE  
 ENGINEER IMMEDIATELY OF ANY  
 DISCREPANCIES PRIOR TO CONSTRUCTION.

REV	DATE	BY	REVISION
1	12-21-94	E.E.D.	INCREASED SEWER DIA. FROM 15 TO 18
2	1-20-95	D.L.P.	REPLACED SLOPE OF 12\"/>

PROPERTY HOLDINGS CORPORATION  
 CITY OF LAS VEGAS

CONSULTING ENGINEERS • LAND SURVEYORS  
 2727 SOUTH RAINBOW BOULEVARD  
 LAS VEGAS, NEVADA 89102-5148 PHONE (702) 873-7550 FAX (702) 362-2597

nevada



NOTE:  
 CONTRACTOR TO VERIFY HORIZONTAL  
 AND VERTICAL ALIGNMENT OF EXISTING  
 UTILITIES AND TO NOTIFY THE  
 ENGINEER IMMEDIATELY OF ANY  
 DISCREPANCIES PRIOR TO CONSTRUCTION.

REMOVE EXIST. 8\"/>

SEWER PLAN & PROFILE  
 FT. APACHE ROAD

PROJECT  
 FT. APACHE, GILMORE, ALEXANDER  
 SEWER MAIN EXTENSION & OVERSIZE

PROFESSIONAL ENGINEER  
 KENNETH HOBSON  
 CIVIL  
 No. 10533  
 12-12-94

WD NO. 4619  
 BY KFN EEB  
 DATE NOV., 1994  
 SCALE H-T=40'  
 V-T=4'  
 SHEET 3 OF 9 SHEETS

26.1.15 307-V736