

LAS VEGAS VALLEY WATER DISTRICT STANDARD NOTES

- No work shall begin on the water plans until they have been released for construction by the LVWD. Following approval of the plans, notice must be given to the LVWD Customer Service Department (878-4194), 48 hours prior to actual construction and 24 hours prior to an inspection.
- Call Before You Dig 1-800-227-2600.
- All work shall conform to LVWD latest standard plates, drawings, and specifications.
- All work, except as modified herein or by Note 3, shall be done in accordance with the most current draft or addition of the Uniform Standard Specifications for Public Works Construction Offsite Improvements, Clark County Area.
- District approved service saddles or tapped collars will be required on all 3/4" and 1" service laterals. Service saddles only will be permitted on 1-1/2" and 2" service laterals. Double tapped collars are not permitted.
- COPPER SERVICE LATERALS: All 3/4" to 2" service laterals will be of copper tubing in accordance with the District specification titled "3503 - Copper Water Tubing".
- The maximum allowable joint deflection for ACP and Ductile iron pipe shall be as follows:

Pipe sizes	ACP	Ductile iron	Ductile iron mechanical joint
6 inch	2.5 degrees	2.5 degrees	3.5 degrees
8 - 12 inch	-	2.5	2.5
14 - 16 inch	2 degrees	1.5	1.5
18 - 24 inch	N/A	1.5	1.5

On PVC pipe, the maximum offset for a 20' length of factory belled pipe shall be 17 inches for 8" pipe, 12 inches for 10" pipe, 11 inches for 12" pipe, and 9 inches for 14" pipe.

QUANTITIES

WATER	
1 8"x8" TEE	1 EA.
2 8" 90 ELBOW	4 EA.
3 10"x26 L.V.V.W.D. EASEMENT	1 EA.
4 6" DETECTOR CHECK	1 EA.
5 8"x6" REDUCER	2 EA.
6 8" GATE VALVE	1 EA.
7 STD. F.H. ASSY.	3 EA.
8 8"x6" TEE	2 EA.
9 6" 90 ELBOW	1 EA.
10 1/2" SERVICE CONNECTION PER STD. PLATE NO.2	2 EA.
11 1/2" METER	2 EA.
8" WATER	771 LF
2" WATER	875 LF
* INCLUDES TEE, C.V., RISER, AND OTHER ASSOCIATED HARDWARE.	

ON-SITE SEWER	
CLEANOUTS	13 EA.
8" PVC SEWER	521 LF
6" PVC SEWER	82 LF
4" PVC SEWER	39 LF

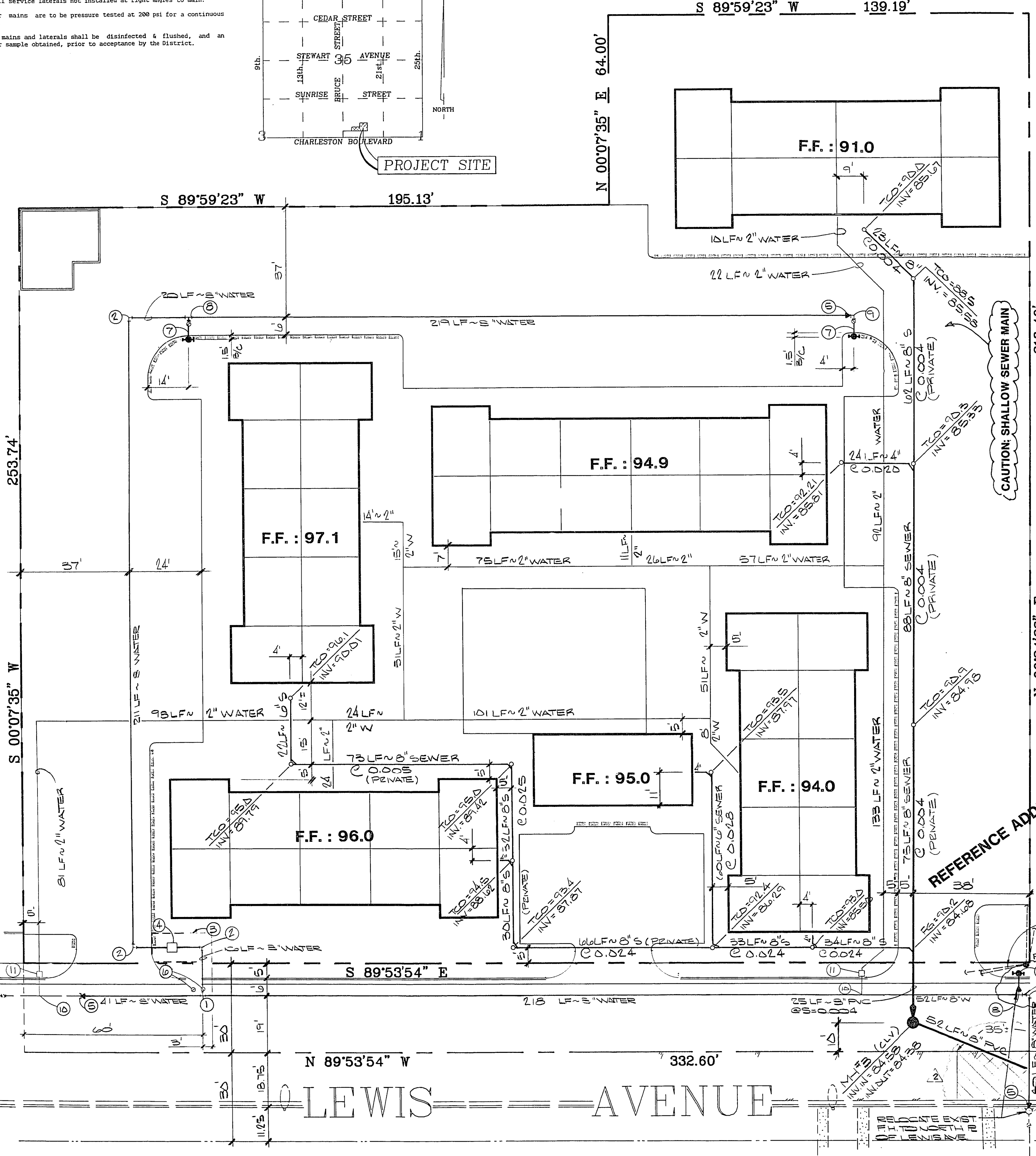
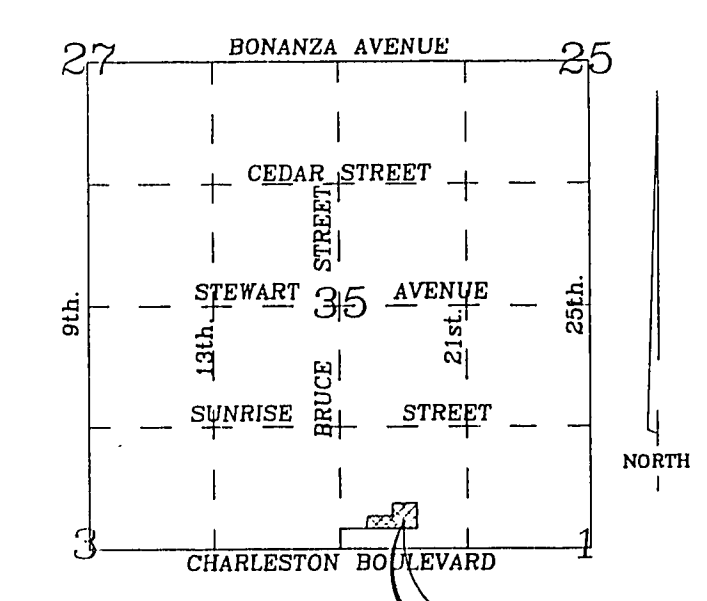
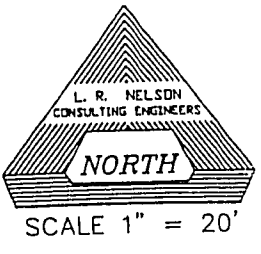
OFF-SITE SEWER	
8" PVC SEWER	218 LF
48" STD. M.H.	3 EA.

Contractor to obtain all meters 2" and smaller from LVWD Central Stores. Telephone 258-3152 - 48 hours prior to pickup.

The detector check assembly and vault with non-traffic bearing cover, must be installed in accordance with the District's standard plate(s) 19 and with standard vault drawing C-475 Rev. 3.

Any block wall or fence must be designed around the easement, so as to allow the District direct access to the vault from the adjacent right-of-way.

- All water meter boxes shall be located outside of driveway areas.
- All valves shall be located outside of driveway areas and valley gutters.
- Detector tape is required in accordance with Standard Plate No. 27 where indicated, and as follows:
 - over all mains not installed 6 feet from back of curb.
 - over all service laterals not installed at right angles to main.
- All water mains are to be pressure tested at 200 psi for a continuous two hour period.
- All water mains and laterals shall be disinfected & flushed, and an acceptable water sample obtained, prior to acceptance by the District.



UTILITY NOTE

UTILITY LOCATIONS SHOWN HEREIN ARE APPROXIMATE ONLY. IT SHALL BE THE CONTRACTOR'S RESPONSIBILITY TO DETERMINE THE EXACT HORIZONTAL AND VERTICAL LOCATION OF ALL EXISTING UNDERGROUND UTILITIES PRIOR TO COMMENCING CONSTRUCTION. NO REPRESENTATION IS MADE THAT ALL EXISTING UTILITIES ARE SHOWN HEREIN. THE ENGINEER ASSUMES NO RESPONSIBILITY FOR UTILITIES NOT SHOWN OR UTILITIES NOT SHOWN IN THEIR PROPER LOCATION.

Avoid cutting underground utility lines. It's costly.
Call before you Dig
 1-800-227-2600
 UNDERGROUND SERVICE (USA)

LEGEND

EXISTING	PROPOSED	DESCRIPTION
---	---	WATER LINES
---	---	SEWER LINES
---	---	STREETLIGHTS
---	---	BLOCK WALL
---	---	L- TYPE CURB & GUTTER
---	---	A- TYPE CURB
---	---	PROPERTY LINE
---	---	CENTERLINE
---	---	FIRE HYDRANT
---	---	RATE OF GRADE
---	---	FINISHED GRADE
---	---	TOP OF CURB
---	---	FLOW LINE
---	---	BACK OF SIDEWALK
---	---	FINISHED FLOOR

END OF ROAD MARKER
 RED PAINTED CURB TO DESIGNATE BIKE LANE

FIRE DATA 1988 U.F.C.

TYPE OF CONSTRUCTION TYPE-V ONE-HR
 NO. OF STORIES TWO
 SEPARATION WALLS ONE
 SPRINKLERS NONE

SQUARE FEET BETWEEN SEPARATION WALLS 10,488 SQUARE FEET MAX.
 ENGINEER'S ESTIMATE OF FIRE FLOW 1750 GPM ESTIMATE

PRESSURE ZONE 2055 FINISHED FLOOR ELEVATION 1897
 APPROXIMATE STATIC PRESSURE 68 PSI

PROJECT NAME: Hidden Village Apt
 This project water plan complies with the Las Vegas Valley Water District's technical requirements; however, this water plan is NOT APPROVED FOR CONSTRUCTION at this time.

[Signature] 8-15-90
 LVWD Date

020-460-019

[Signature] 5/17/90
 CLV FIRE MARSHAL DATE

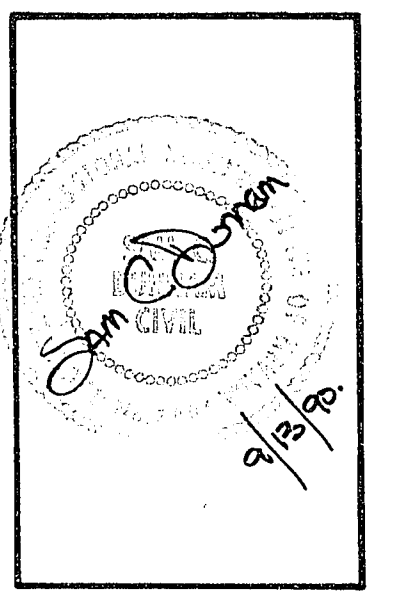
[Signature] 9-14-90
 LVWD DATE

[Signature] 08-19-90
 NEVADA POWER COMPANY DATE

REFERENCE ADDENDUM SHTS. A-1 & A-2 FOR CUL-DE-SAC CONST.

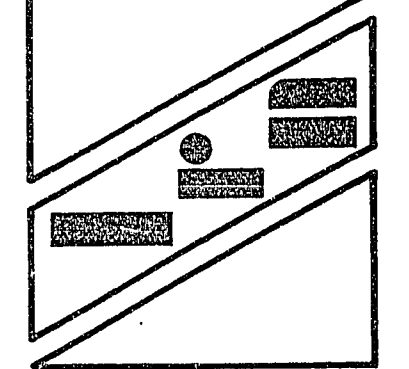
REFERENCE ADDENDUM SHEETS

SEE SHEET 4



DRAWN BY: RLF
 CHECKED BY: BCD
 JOB NUMBER: 258-001-001
 DATE: 4-17-90
 DESIGNED BY: RLF
 REVISION: 1 7/17/90 FIG. 100 PER 3501F2
 2 8/15/90 AS PATCHED PER 3501F2
 3 9/14/90
 4 12-12-90 SEE SHEET A1 FOR 2E-1
 5 1/20/90 HYDRANT LOCATION, MFC

L.R. NELSON
 CONSULTING ENGINEERS
 6075 S. EASTERN AVENUE STE. 5
 LAS VEGAS, NEVADA
 (702) 798-7978



UTILITY PLAN

HIDDEN VILLAGE APARTMENTS

LAS VEGAS NEVADA

SHEET NO.
3
 OF 5 SHEETS

107-V1020