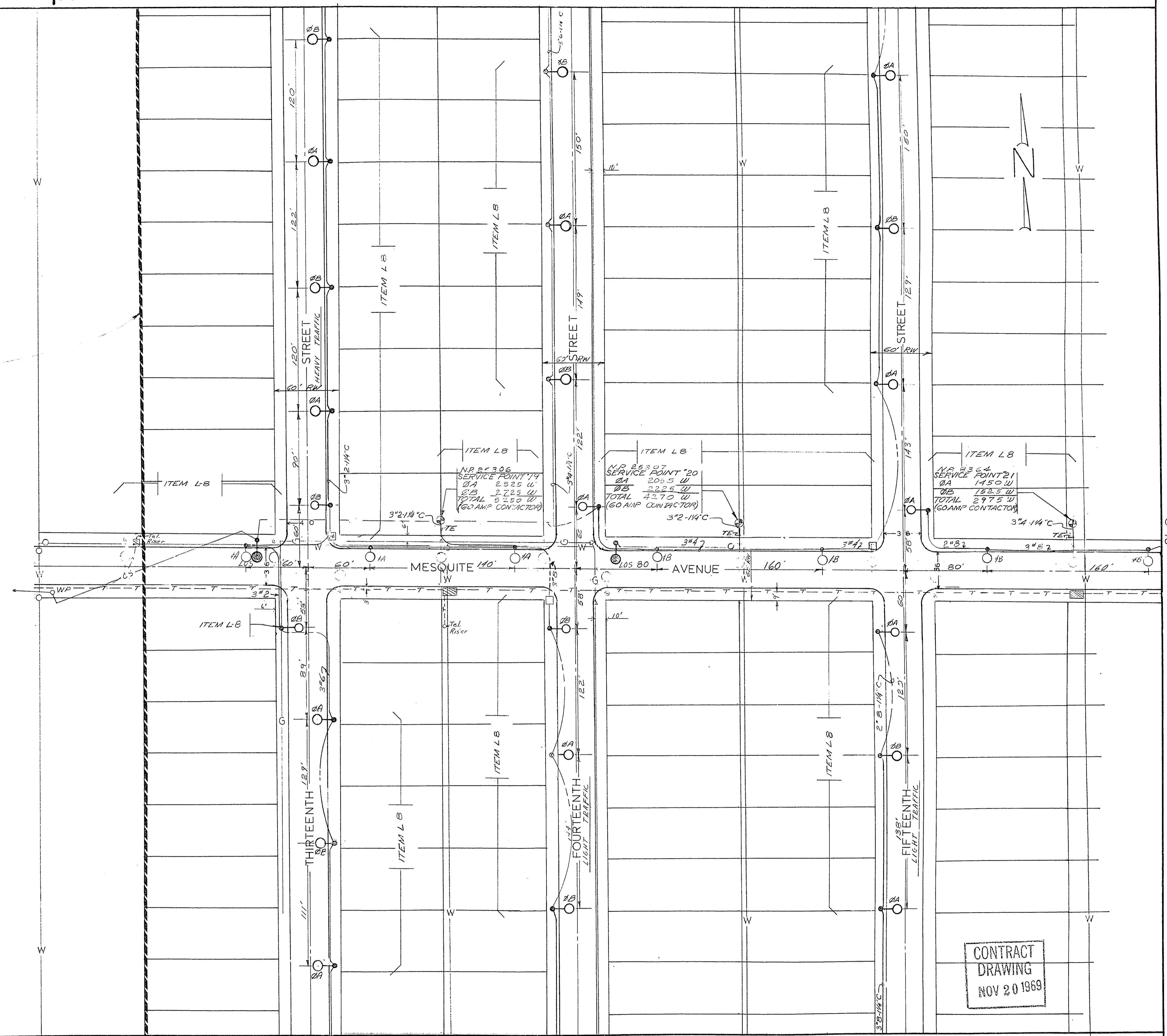


S.I.D. 485



CONTRACT
DRAWING
NOV 20 1969

SCALE 1" = 50' Sh.12 | Sh.13

EXISTING UTILITIES ARE LOCATED ON THE PLANS FOR THE CONVENIENCE OF THE CONTRACTOR ONLY. THE CONTRACTOR SHALL BEAR FULL RESPONSIBILITY FOR PROTECTING ALL UTILITIES AND THE CITY BEARS NO LIABILITY FOR UTILITIES NOT SHOWN ON THE PLANS OR NOT IN THE LOCATION SHOWN ON THE PLANS.

6	1861 8/1/69
4	1854 5/28/69
3	7488 7/24/69
3	18-8/1/69
2	18-8/1/69

REV. 4-18-69 REV. D UPDATED FOR S.I.D. 485
 APPROVED BY CITY ENGINEER *[Signature]* NOV 10 1969
 DATE

JOSEPH P. GEDWILL
 ENGINEERING
 LAS VEGAS NEVADA

DRAWN BY	DATE	APPROVED FOR	FOR
DES. [Signature]	4/1/69	[Signature]	CITY OF LAS VEGAS
CHECKED BY	DATE	BY	DATE
G.S. WILL	7/7/69	[Signature]	

SEAL

FOR THE
CITY OF LAS VEGAS NEVADA

TITLE GENERAL STREET LIGHTING
 SPECIAL ASSESSMENT DISTRICT No. 485

CONTRACT No.
 CLV

E-4
 UNIT 3