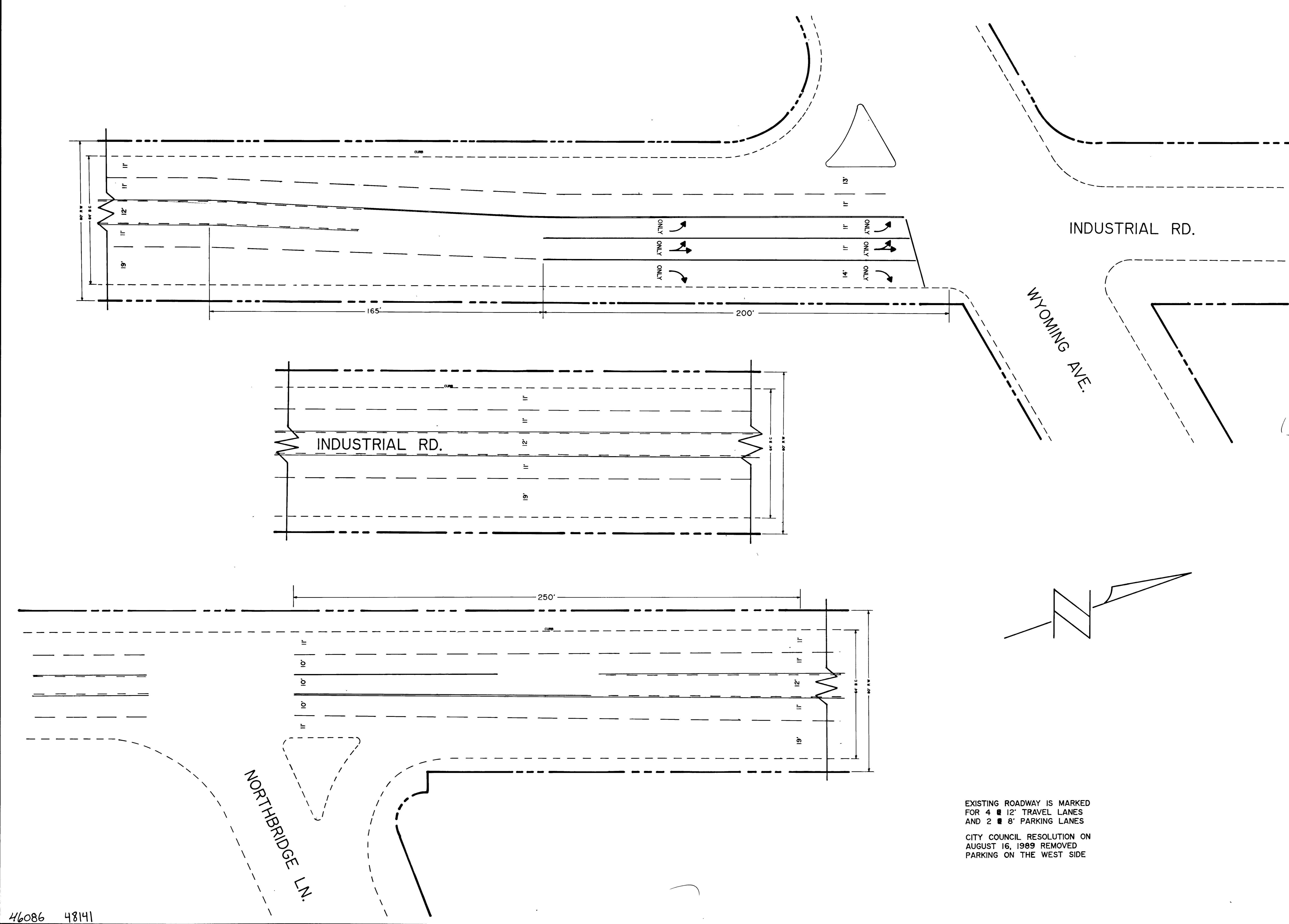


46086 48141



EXISTING ROADWAY IS MARKED FOR 4 x 12' TRAVEL LANES AND 2 x 8' PARKING LANES

CITY COUNCIL RESOLUTION ON AUGUST 16, 1989 REMOVED PARKING ON THE WEST SIDE

		Scale 1" = 20' Design by G. DAMMEIR Approved by Supervisor of Traffic Approved by the City Engineer	Date 10-12-89 Drawn by F. CALIXTO Date 10-25-89	W.O. no. Revisions Date
<b>Department of Public Works</b> INDUSTRIAL ROAD DELINEATION MODIFICATION		Traffic Engineering Division		
		Drawing no. 113-179		