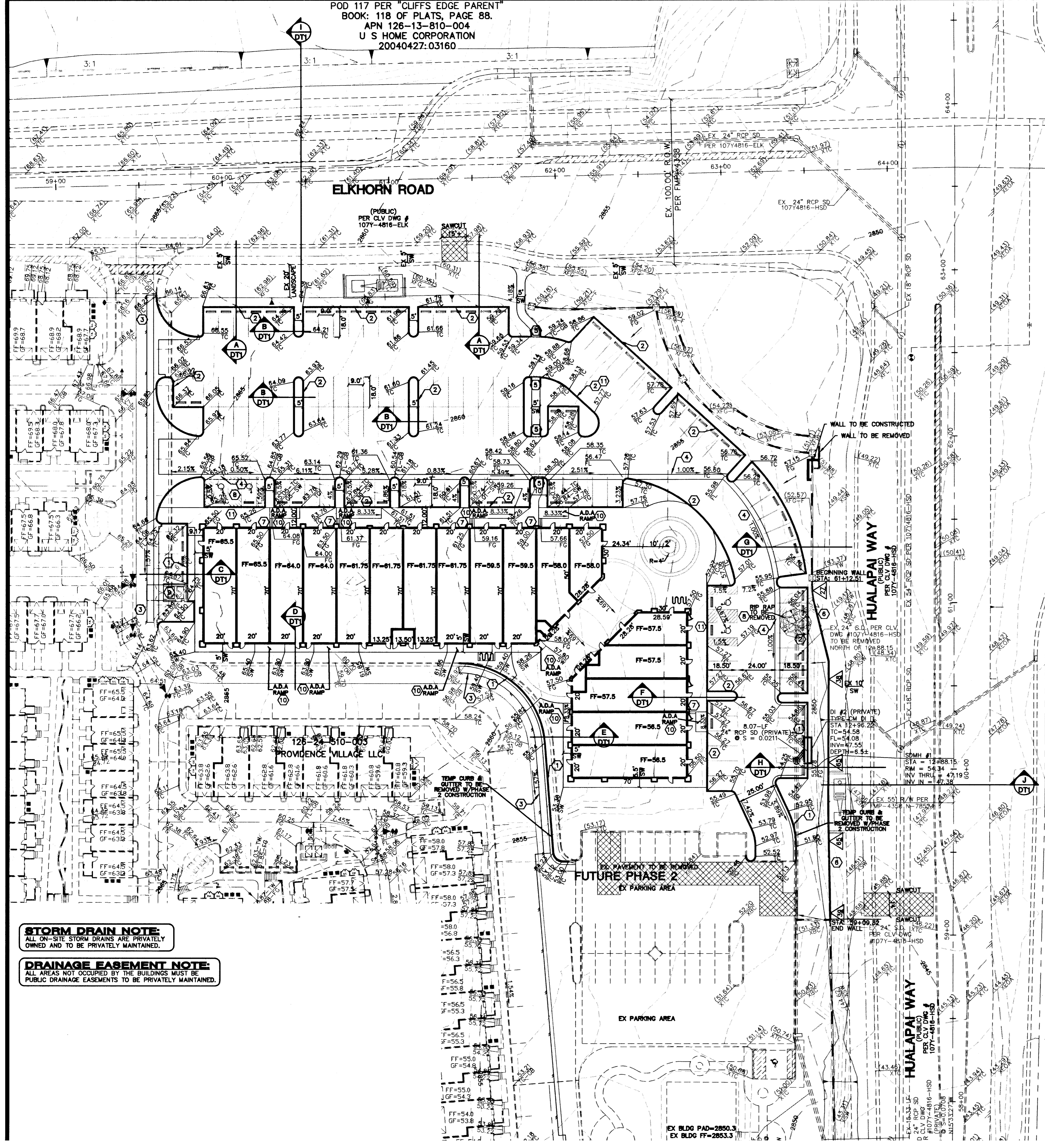


POD 117 PER "CLIFFS EDGE PARENT"
 BOOK: 118 OF PLATS, PAGE 88.
 APN 126-13-810-004
 U S HOME CORPORATION
 20040427:03160

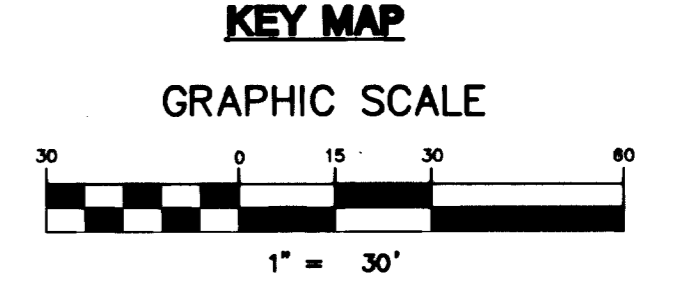
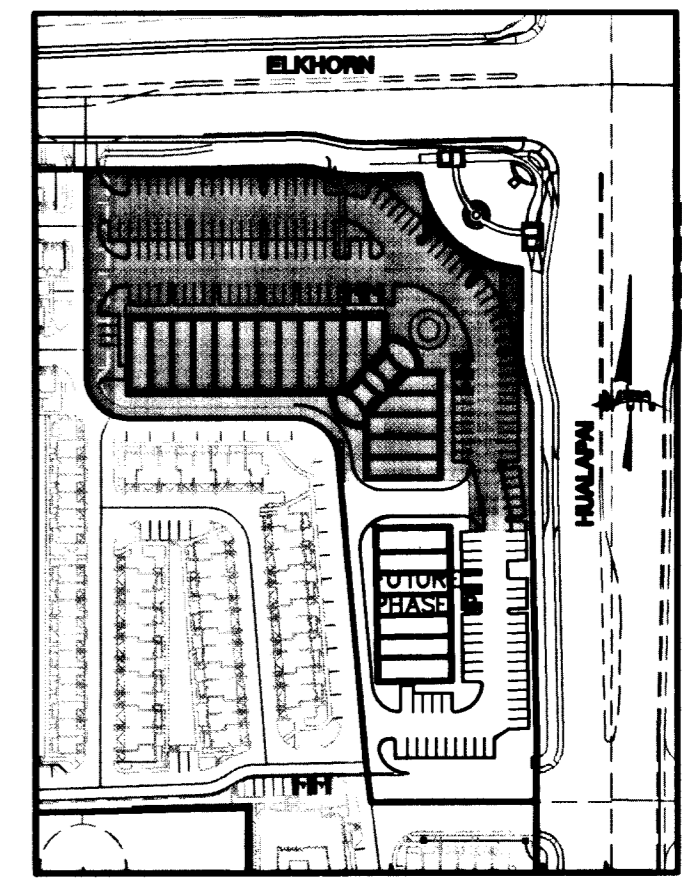


BACK OF CURB LINE TABLE

NO.	BEARING	LENGTH
L1	S00°00'00"W	16.00'
L2	N90°00'00"W	55.00'
L3	N00°00'00"E	15.50'
L4	N90°00'00"E	64.00'
L5	N90°00'00"E	55.00'
L6	N90°00'00"W	14.94'
L7	S42°21'06"W	19.72'
L8	S47°38'54"E	64.00'
L9	S42°21'06"W	15.50'
L10	S47°38'54"E	55.00'
L11	S42°21'06"W	15.30'
L12	N82°33'33"E	15.54'
L13	N90°00'00"E	15.93'
L14	S89°53'03"W	64.00'
L15	N90°00'00"E	15.50'
L16	N90°00'00"W	15.50'
L17	S00°00'00"E	46.00'
L18	N90°00'00"W	14.76'
L19	S00°00'00"W	55.00'
L20	S00°00'00"W	63.98'
L21	S89°53'03"W	14.20'
L22	N00°00'00"E	14.78'
L23	S90°00'00"W	46.00'
L24	N00°00'00"W	15.50'
L25	S90°00'00"E	5.00'
L26	N90°00'00"W	37.00'
L27	S90°00'00"W	28.00'
L28	S90°00'00"W	37.00'
L29	N90°00'00"W	16.14'
L30	S00°00'00"W	36.50'
L31	S89°59'56"W	4.17'
L32	S00°00'00"W	13.00'
L33	S89°59'59"W	19.47'
L34	N04°26'45"W	23.24'
L35	N90°00'00"W	18.00'
L36	N00°00'00"W	14.32'
L37	S00°00'00"W	2.45'
L38	N90°00'00"W	2.02'
L39	S00°00'00"W	30.00'
L40	N90°00'00"E	5.44'
L41	S47°38'54"E	20.64'
L42	N90°00'00"W	19.00'
L43	N00°00'00"W	9.00'
L44	N90°00'00"E	16.77'
L45	N25°10'29"W	17.51'
L46	S00°00'00"E	8.89'
L47	S00°00'00"E	6.11'
L48	N25°10'29"W	22.95'
L49	S89°59'59"W	3.51'
L50	N04°26'45"W	43.00'

BACK OF CURB CURVE TABLE

NO.	RADIUS	DELTA	LENGTH	TANGENT
C1	25.00'	90°00'00"	39.27'	25.00'
C2	2.00'	90°00'00"	3.14'	2.00'
C3	2.50'	180°00'00"	7.85'	---
C4	53.00'	19°51'54"	18.38'	9.28'
C5	2.50'	87°31'09"	2.95'	1.67'
C6	118.50'	37°07'07"	76.77'	39.79'
C7	2.50'	88°19'51"	3.85'	2.33'
C8	100.50'	00°32'59"	0.96'	0.48'
C9	2.50'	84°46'41"	3.70'	2.28'
C10	2.50'	100°48'41"	4.40'	3.02'
C11	76.00'	71°08'35"	94.37'	54.35'
C12	2.50'	98°02'43"	4.28'	2.88'
C13	2.00'	92°37'13"	3.23'	2.09'
C14	3.00'	86°39'06"	5.08'	3.37'
C15	27.50'	80°43'41"	38.75'	23.37'
C16	2.50'	103°35'16"	4.52'	3.18'
C17	52.00'	85°33'11"	77.65'	48.11'
C18	2.50'	95°41'25"	4.18'	2.76'
C19	27.50'	84°18'35"	40.47'	24.90'
C20	5.00'	90°00'00"	7.85'	5.00'
C21	2.50'	90°00'00"	3.93'	2.50'
C22	28.00'	42°21'06"	20.70'	10.85'
C23	8.00'	149°56'53"	20.94'	29.80'
C24	2.50'	77°42'01"	3.39'	2.01'
C25	2.50'	115°10'29"	5.03'	3.94'
C26	50.00'	25°10'29"	21.97'	11.16'
C27	2.51'	180°00'00"	7.85'	---
C28	25.00'	25°10'29"	10.98'	5.58'
C29	2.50'	64°49'31"	2.83'	1.59'
C30	5.50'	85°33'16"	8.21'	5.09'



NOTE: SEE SHEET DT2 FOR LINE AND CURVE TABLES.

STORM DRAIN NOTE: ALL ON-SITE STORM DRAINS ARE PRIVATELY OWNED AND TO BE PRIVATELY MAINTAINED BY THE HOMEOWNERS ASSOCIATION.

FLOODZONE NOTE: SITE IS LOCATED IN A ZONE X AS SHOWN ON FIRM PANEL 32003C1750E DATED SEPTEMBER 27, 2002. A ZONE X IS DETERMINED TO BE OUTSIDE THE 0.2% ANNUAL CHANCE FLOOD PLAIN.

NOTE: CONTRACTOR SHALL VERIFY HORIZONTAL AND VERTICAL LOCATION OF EXISTING UTILITIES AND NOTIFY THE DESIGN ENGINEER IMMEDIATELY OF ANY DISCREPANCIES PRIOR TO CONSTRUCTION.

125-19-101-001
 BECKER ERNEST
 A IV & K C FAM TR
 POD 117

LEGEND

- RG ROUGH GRADE
- FG FINISH GRADE
- FL FLOW LINE
- TC TOP OF CURB
- TRC TOP OF ROLL CURB
- EAG EDGE OF ASPHALT PAVEMENT
- FUT FUTURE
- EXIST EXISTING (EX.)
- VS VALLEY GUTTER
- NG NATURAL GROUND
- H.P. HIGH POINT
- L.P. LOW POINT
- C/C CENTER LINE
- O/C OFFSET CROWN
- BCR BACK OF CURB
- BCR BEGIN CURB RETURN
- TF TOP OF FOOTING
- GB GRADE BREAK
- PC POINT OF CURVATURE
- PT POINT OF TANGENCY
- PRC POINT OF REVERSE CURVATURE
- POC POINT OF COMPOUND CURVATURE
- BVC BEGIN VERTICAL CURVE
- MVC MID-POINT OF VERTICAL CURVE
- EVC END VERTICAL CURVE
- PRVC POINT OF REVERSE VERTICAL CURVE
- PVI POINT OF VERTICAL INTERSECTION
- TPW TOP OF PLANTER WALL
- TRW TOP OF RETAINMENT WALL
- TW TOP OF HEAD WALL
- THW TOP OF HEAD WALL
- TF TOP OF FOOTING
- TOP TOP OF CHANNEL/SCARP
- TOE TOP OF CHANNEL/SCARP
- TOP OF BOX/ARCH STRUCTURE
- TOB/TOA POWER POLE
- PP TRANSITION
- RET. RETAINMENT
- INT. INTERSECTION
- D.G. DESIGN GRADE
- TSW TOP OF SIDEWALK
- FF FINISH FLOOR
- GF GARAGE FINISH FLOOR
- BEF BASE FLOOR ELEVATION
- RCP REINFORCED CONCRETE PIPE
- SD STORM DRAIN
- DI DROP INLET
- R/W RIGHT-OF-WAY
- S/W SIDEWALK
- BCL BACK OF CURB LENGTH
- P.U.E. PUBLIC UTILITY EASEMENT

BASIS OF BEARING
 THE BASIS OF BEARINGS FOR THIS PROJECT IS NORTH 0°08'16" EAST BEING THE EAST LINE OF THE NORTHWEST QUARTER (NE 1/4) OF THE SECTION 24, TOWNSHIP 36 SOUTH, RANGE 59 EAST, M.D.M., CLARK COUNTY, NEVADA, AS SHOWN ON A RECORD OF SURVEY ON FILE IN THE CLARK COUNTY, NEVADA, RECORDER'S OFFICE IN FILE 123 AT PAGE 32.

PROJECT BENCHMARK
 PROJECT DATUM: NORTH AMERICAN VERTICAL DATUM OF 1988 (NAV88)
 CLARK COUNTY VERTICAL CONTROL: 1000:6N6
 NAV88 ELEVATION: 787.794 METERS (2584.62 FEET)
 RIVET AND SQUARE ALUMINUM PLATE IN A CONCRETE CYLINDER, LOCATED 25' SOUTH & 50' EAST OF GRAND CANYON DRIVE AND RED COACH AVENUE, 1' WEST OF ELECTRICAL VAULT.

CITY OF LAS VEGAS BENCHMARK
 DATUM: NORTH AMERICAN VERTICAL DATUM OF 1988 (NAV88)
 CITY OF LAS VEGAS BENCHMARK: BLV99:13SES
 NAV88 ELEVATION: 869.606 METERS (2853.03 FEET)
 RIVET AND PLATE IN CONCRETE CYLINDER NW CORNER OF HUALAPAI AND ELKHORN
 NOTE: ADD 0.34' TO ABOVE CITY OF LAS VEGAS BENCHMARK BLV99:13SES TO MATCH ORIGINAL PROJECT BENCHMARK, CLARK COUNTY BENCHMARK 1000-6N6 (2584.62 FEET) AS SHOWN ON RECORD OF SURVEY FILE 124 PAGE 94.

CONSTRUCTION ITEMS

1. CONSTRUCT 24" TYPE "L" CURB & GUTTER PER STD. DWG. 216.
2. CONSTRUCT TYPE "A" ISLAND CURB PER STD. DWG. 219.
3. SAWCUT AND REMOVE ASPHALT PAVING. MATCH EXISTING EDGE WITH NEW PAVING.
4. CONSTRUCT 36" CONCRETE VALLEY GUTTER PER DETAIL ON SHEET DT1.
5. CONSTRUCT HANDICAP RAMP AT CURB PER DETAIL ON SHEET DT2.
6. CONSTRUCT RETAINING WALLS PER THE CLARK COUNTY STANDARD DESIGN OR AN APPROVED WALL DESIGNED BY A STRUCTURAL ENGINEER. A WALL CONSTRUCTION PERMIT MUST BE OBTAINED PRIOR TO CONSTRUCTION. WALLS TO MEET CLIFFS EDGE DESIGN GUIDELINES.
7. CONSTRUCT STEP WITH 7" RISER, 15" RUN.
8. TYPICAL HANDICAP ACCESSIBLE PARKING PER TYPICAL DETAIL SHEET DT1.
9. TRASH ENCLOSURE, PER ARCHITECTURAL PLANS.
10. ADA RAMP WITH HANDRAIL PER ARCHITECTURAL PLANS.
11. ZERO FACE

STORM DRAIN NOTE:
 ALL ON-SITE STORM DRAINS ARE PRIVATELY OWNED AND TO BE PRIVATELY MAINTAINED.

DRAINAGE EASEMENT NOTE:
 ALL AREAS NOT OCCUPIED BY THE BUILDINGS MUST BE PUBLIC DRAINAGE EASEMENTS TO BE PRIVATELY MAINTAINED.

CITY OF LAS VEGAS

GREENSTREET PROPERTIES
 2727 SOUTH RAINBOW BOULEVARD
 LAS VEGAS, NEVADA 89146-3914
 PH. (702) 973-7550 FAX (702) 362-2597 WEB WWW.VTNV.COM
 CONSULTING ENGINEERS & PLANNERS & LAND SURVEYORS

GREENSTREET PROVIDENCE PHASE 1

GRADING PLAN

DEBORAH KALEIKINI-JOHNSON
 CIVIL ENGINEER
 LICENSE NO. 14871
 EXPIRES 06-30-09

Call before you Dig
 811 or 1-800-227-2800

Call before you Overhead
 1-702-455-7911
 1-702-223-8811

Underground
 1-702-455-7911
 1-702-223-8811

Call before you Dig
 811 or 1-800-227-2800

Call before you Overhead
 1-702-455-7911
 1-702-223-8811

Professional Engineer Seal:
 DEBORAH KALEIKINI-JOHNSON
 CIVIL ENGINEER
 LICENSE NO. 14871
 EXPIRES 06-30-09

Scale: 1" = 30' HORIZ. N/A VERT.

Sheet: GR1
 6 of 10 SHEETS
 DRAWING NO. 10744964

DATE: JUNE 07
DESIGNED BY: JAM/RJM
CHECKED BY: DEBORAH KALEIKINI-JOHNSON
PROJECT NO.: 0802

Drawn by: H25622