

Call before you UnderGround

1-702-455-7511
CLARK COUNTY TRAFFIC OPERATIONS

1-702-229-6611
FREEWAY AND ARTERIAL SYSTEM OF TRANSPORTATION

CALL BEFORE YOU DIG

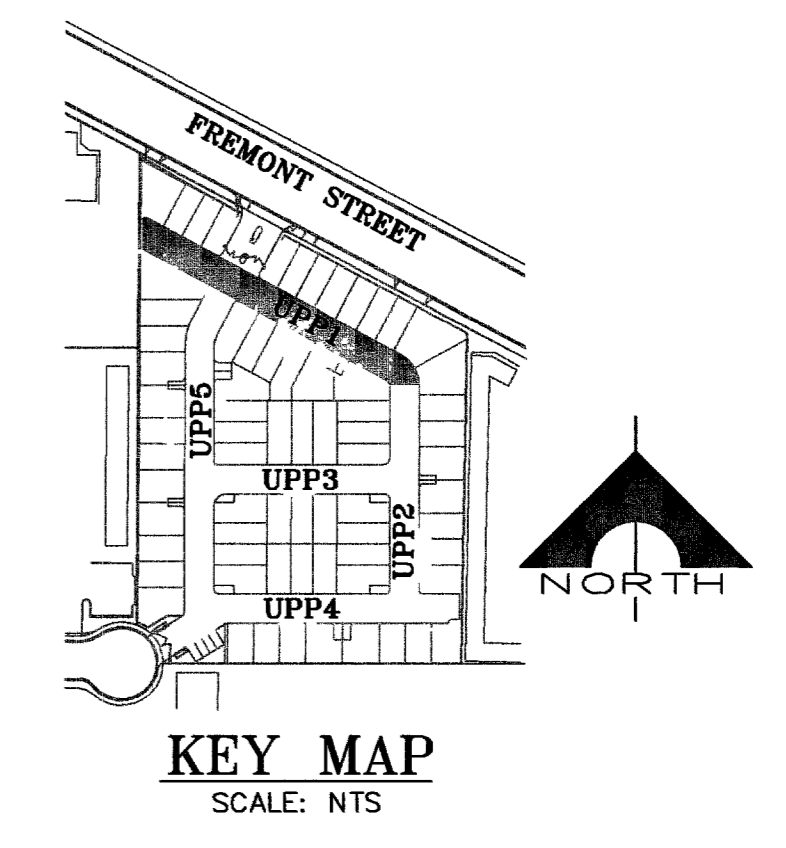
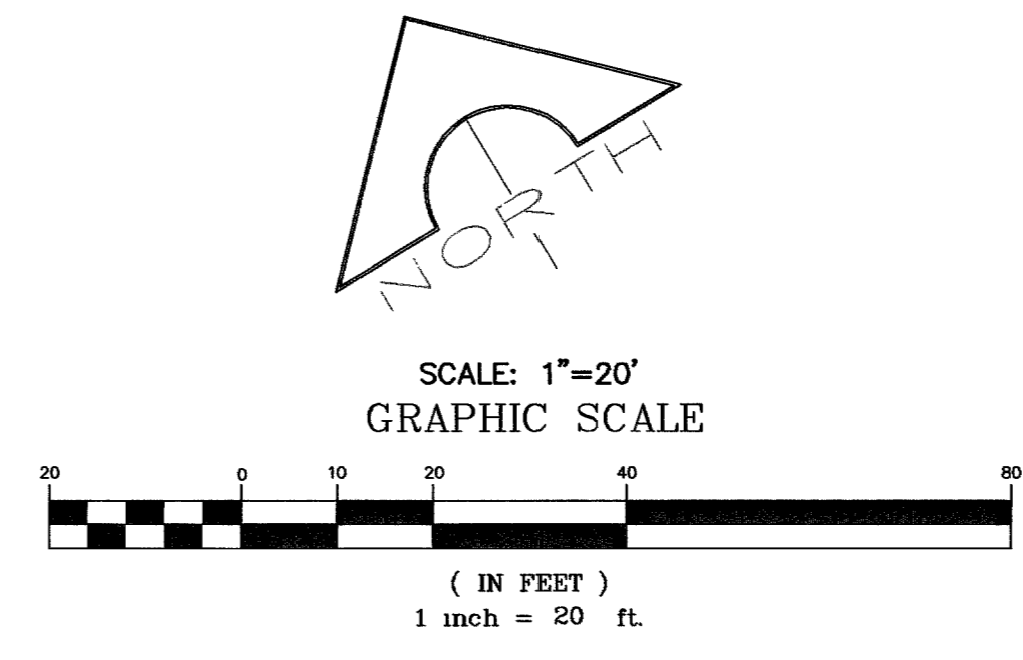
1-800-227-2600
UNDERGROUND SERVICE ALERT (USA)

CALL BEFORE YOU OVERHEAD

1-702-227-2929
NEVADA POWER ENVIRONMENT AND SAFETY SERVICES DEPARTMENT

SEWER SCHEDULE

1. MH#1 48" TYP I CONC STA 22+42.55 RIM = 1890.20 INV IN= 1873.68 EX. INV IN= 1873.48 EX. INV OUT= 1873.48	5. MH#5 48" TYP I CONC STA 15+90.22 RIM = 1885.75 INV IN= 1876.79 INV IN= 1876.79	9. MH#9 48" TYP I CONC STA 10+04.22 RIM = 1885.90 INV IN= 1877.74 INV IN= 1877.74
2. MH#2 48" TYP I CONC RIM = 1881.96 INV IN= 1874.37 INV OUT= 1874.17	6. MH#6 48" TYP I CONC STA 12+61.97 RIM = 1885.75 INV IN= 1876.59 INV OUT= 1877.47	10. MH#10 48" TYP I CONC STA 10+71.55 RIM = 1885.62 INV IN= 1876.68 INV OUT= 1876.48
3. MH#3 48" TYP I CONC STA 13+18.81 RIM = 1885.74 INV IN= 1874.71 INV IN= 1874.71 INV OUT= 1874.51	7. MH#7 48" TYP I CONC STA 10+04.22 RIM = 1887.50 INV IN= 1878.81 INV OUT= 1878.81	11. MH#11 48" TYP I CONC STA 9+89 RIM = 1885.22 INV IN= 1876.07 INV IN= 1876.07
4. MH#4 48" TYP I CONC STA 13+28.99 RIM = 1883.70 INV IN= 1875.01 INV OUT= 1874.81	8. MH#8 48" TYP I CONC STA 11+36.66 RIM = 1886.90 INV IN= 1878.61 INV OUT= 1878.61	12. MH#12 48" TYP I CONC STA 10+04.45 RIM = 1885.28 INV IN= 1876.72 INV OUT= 1876.72



BASIS OF BEARING

N001°3'16"W
BEING THE WEST LINE OF THE SE 1/4 OF SECTION 35, TOWNSHIP 20 SOUTH, RANGE 61 EAST, M.D.M. CLARK COUNTY, NEVADA, AS PER RECORD OF SURVEY FILE 117 PAGE 75, CLARK COUNTY, NEVADA RECORDS.

BENCHMARK

BM NO 7C013556
ELEVATION = 1905.28' NAVD'88

RIVET AND PLATE IN T/C. NW COR. OF FREMONT ST. AND BRUCE ST NEAR THE P.C. OF FREMONT ST.

FEMA INFORMATION

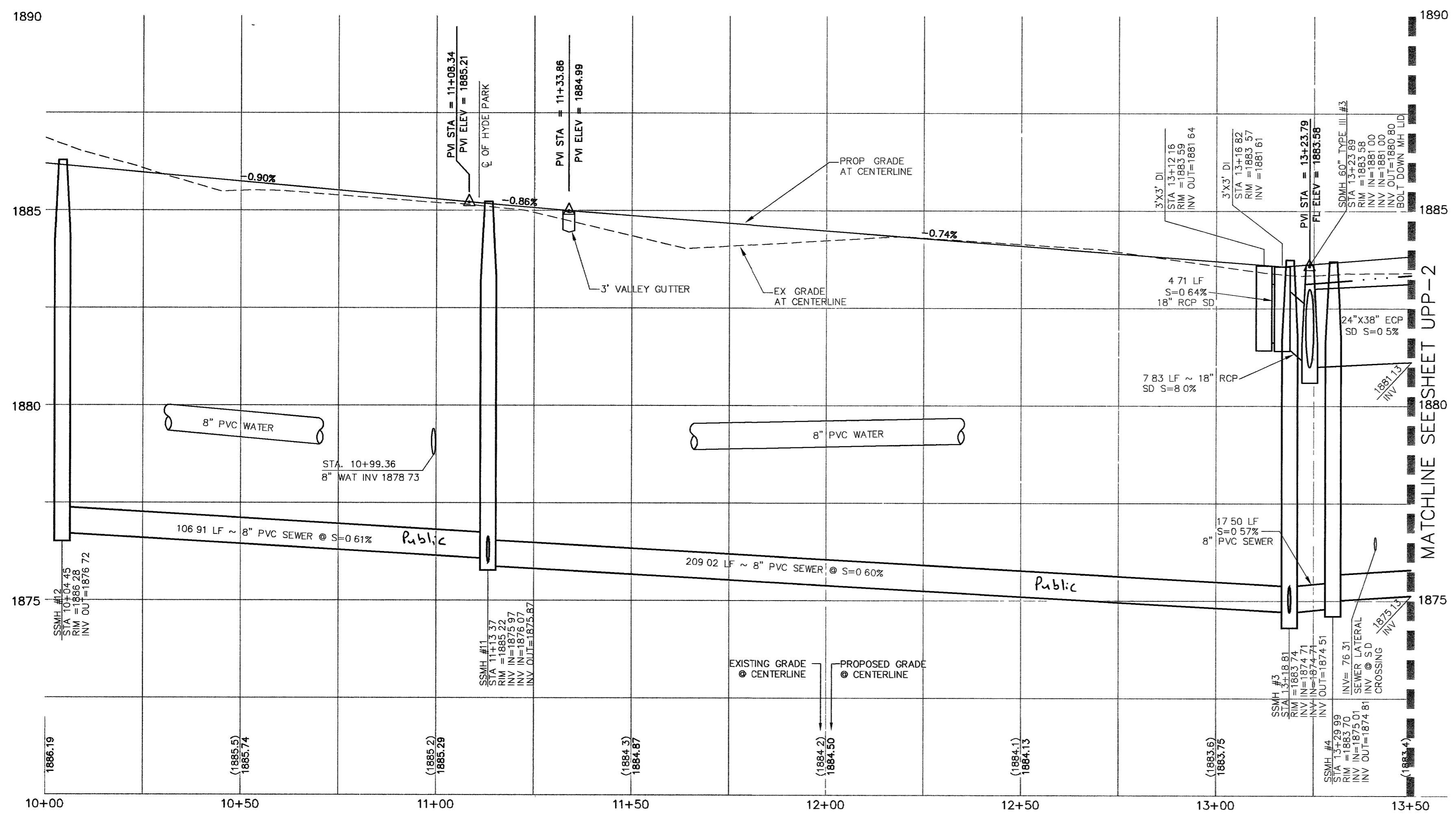
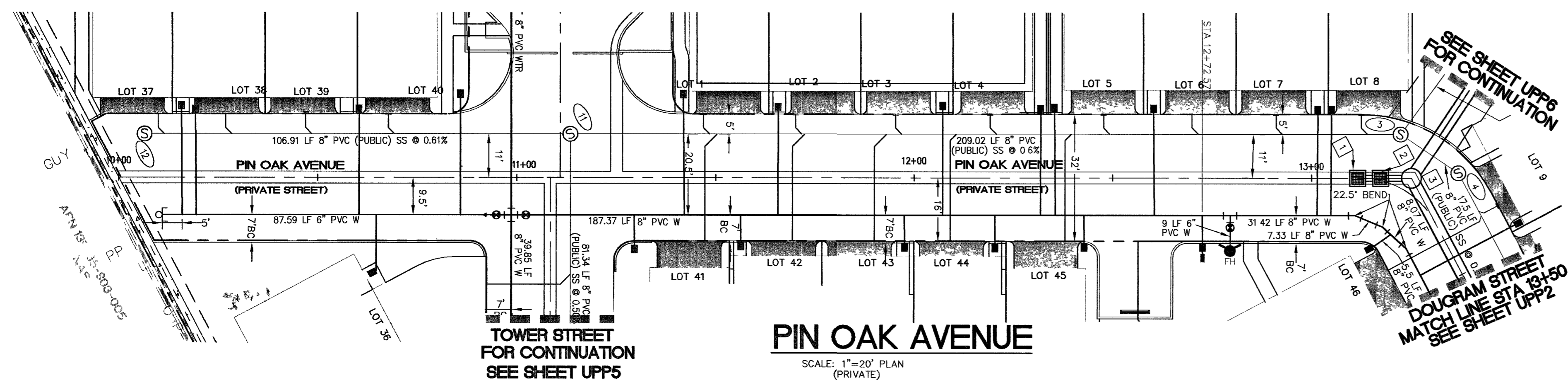
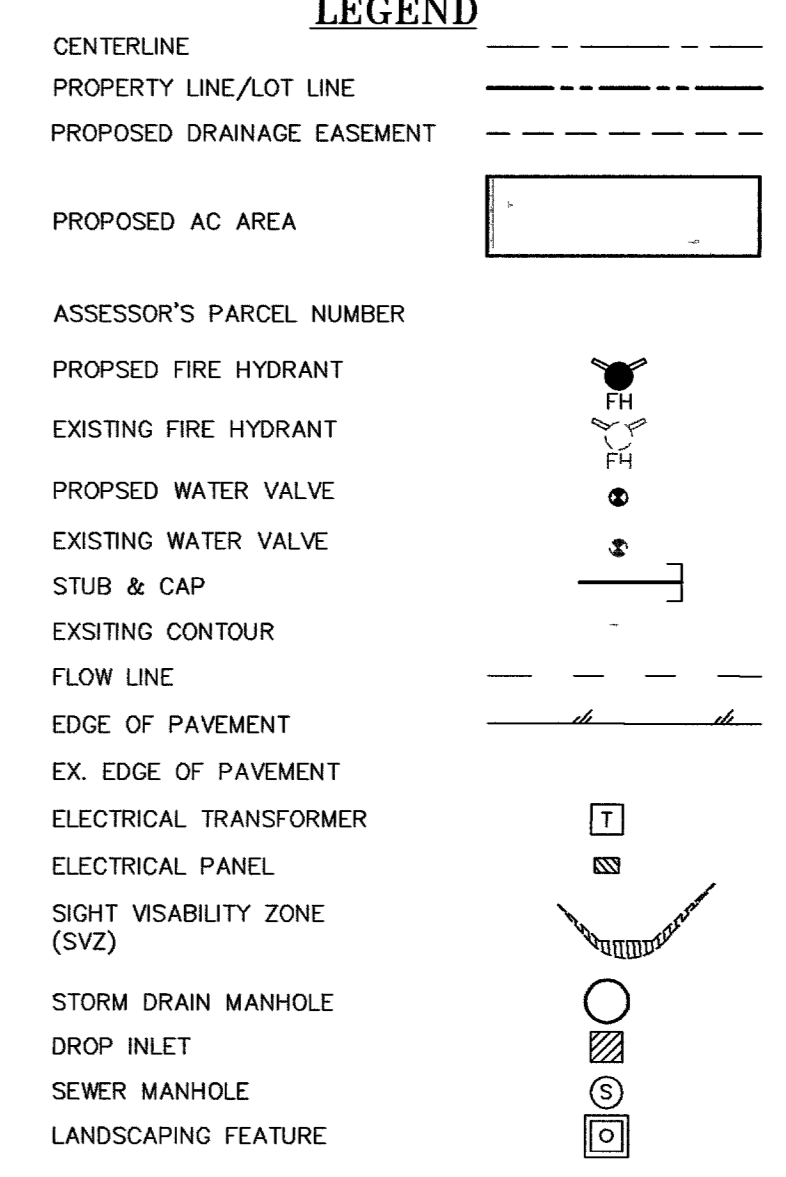
SITE IS LOCATED IN ZONE 'X'. AREA DETERMINED TO BE OUTSIDE OF 500 YEAR FLOOD ZONE PER FIRM MAP NO 32003-C-2170-E EFFECTIVE SEPT. 27, 2002.

NOTE:

ALL PRIVATE DRIVES ARE P.U.E., PUBLIC SEWER EASEMENTS, AND PUBLIC DRAINAGE EASEMENTS TO BE PRIVATELY MAINTAINED BY HOA.

GENERAL NOTES

- JPL ENGINEERING, INC. ASSUMES NO RESPONSIBILITY FOR EXISTING UTILITIES SHOWN OR NOT SHOWN. THE UTILITIES SHOWN ON THIS DRAWING HAVE BEEN PLOTTED FROM RECORD INFORMATION AND ARE FOR THE CONVENIENCE OF THE CONTRACTOR ONLY. IT IS THE CONTRACTOR'S RESPONSIBILITY TO FIELD VERIFY BOTH THE HORIZONTAL AND VERTICAL LOCATION OF ALL RELEVANT UTILITIES PRIOR TO COMMENCEMENT OF CONSTRUCTION. IF A CONFLICT OR DISCREPANCY IS DISCOVERED, THE CONTRACTOR SHALL NOTIFY THE ENGINEER IN WRITING IMMEDIATELY.
- ALL WATER FACILITIES CONSTRUCTION SHALL BE IN ACCORDANCE WITH THE UNIFORM DESIGN AND CONSTRUCTION STANDARDS FOR WATER DISTRIBUTION SYSTEMS (UDACS), LATEST EDITION.
- WATER AND SEWER SERVICE LATERALS SHALL BE INSTALLED A MINIMUM OF FOURTY-EIGHT (48) INCHES APART IN SEPARATE TRENCHES. WATER LATERALS SHALL BE A MINIMUM OF TWELVE (12) INCHES ABOVE THE SEWER LATERAL (REF. UNIFORM PLUMBING CODE).



STORMDRAIN SCHEDULE

1. PROP. 3'x3' DI STA 13+12.16 RIM = 1883.59 INV OUT=1881.64	7. PROP. 60" TYPE I SDMH STA 12+24.17 RIM = 1885.65 INV IN=1882.82 INV OUT=1882.42 BOLT DOWN MH LID
2. PROP. 3'x3' DI STA 13+18.82 RIM = 1883.57 INV IN=1881.61	10. PROP. 60" TYPE I SDMH STA 10+51.07 RIM = 1887.05 INV IN=1883.73 INV OUT=1883.33 BOLT DOWN MH LID
3. PROP. 60" TYPE III SDMH STA 13+23.89 RIM = 1883.58 INV IN=1881.00 INV OUT=1880.00 BOLT DOWN MH LID	11. PROP. 60" TYPE III SDMH STA 0+00 RIM = 1886.55 INV IN=1884.26 INV IN=1884.26 INV OUT=1884.06
4. PROP. 60" TYPE III SDMH STA 14+39.22 RIM = 1884.55 INV IN=1881.68 INV IN=1881.68 INV OUT=1881.58 BOLT DOWN MH LID	12. PROP. 15" MODIFIED TYPE "CM" DI #12 STA 0+00 GRATE = 1888.55 INV OUT=1884.40
5. PROP. 3'x3' DI STA 11+51.36 RIM = 1885.25 INV OUT=1881.95	13. PROP. 15" MODIFIED TYPE "CM" DI #13 STA 0+00 GRATE = 1888.20 INV OUT=1884.40

JPL ENGINEERING INC.

8620 South Eastern Avenue Suite 8
Las Vegas, NV 89123
phone (702) 898-6269 fax (702) 898-0647

URBAN LOFTS X, LTD

FREMONT STREET LOFT HOMES

PIN OAK AVE. UTILITY PLAN + PROFILE

STATION: 10+00.00 TO 13+50.00

NOVEMBER 2006

APPROVALS

James P. Lopez
JAMES P. LOPEZ
Exp. 12-31-07
CIVIL
11/1/06

JOB #05047

SHEET NO **UPP1**

18 OF 24
10744945

101152

APPROVALS

James P. Lopez
LAS VEGAS VALLEY WATER DISTRICT
PROJECT NO. 10870

3/28/07
DATE