

NDOT OCCUPANCY PERMIT REQUIREMENTS:

PLANS FOR THIS PROJECT SHOW PROPOSED WORK WITHIN EXISTING NDOT RIGHT-OF-WAY. DRAWING MUST BE SUBMITTED TO NDOT FOR REVIEW PRIOR TO SUBMITTAL OF MYLARS TO LVVWD FOR APPROVAL. THE LAS VEGAS VALLEY WATER DISTRICT (LVVWD) WILL SUBMIT APPLICATION FOR ENCROACHMENT PERMIT AFTER PLAN APPROVAL. NDOT REQUIRES THAT THE FOLLOWING INFORMATION BE INCLUDED ON THE PLAN:

- STREET NAME (NDOT RIGHT-OF-WAY IDENTIFIED AS SR 140, ETC.)
- NDOT RIGHT-OF-WAY BOUNDARY IDENTIFIED AND CLEARLY STATED
- NDOT TRENCH DETAIL OR BORE DETAIL
- MAJOR CROSS STREETS
- NDOT STATIONING
- UNDERLYING FEE OWNERSHIP OF PARCEL
- DISTANCE FROM WORK LOCATION TO MAJOR CROSS STREET
- DIMENSION OF TRENCH OR WORK AREA
- IDENTIFIED NDOT CENTERLINE
- INCLUDE DETAILED DESCRIPTION OF SLOPE OF WORK
- ENGINEER TO COORDINATE WITH NDOT @ 702-385-6509 TO DETERMINE IF RIGHT-OF-WAY IS OWNED BY NDOT OR ONLY MAINTAINED BY NDOT. IF RIGHT-OF-WAY IS ONLY MAINTAINED BY NDOT, THE ENGINEER/DEVELOPER WILL PROVIDE LVVWD WITH EASEMENT FOR RIGHT-OF-WAY FOR UNDER SURFACE INSTALLATION PRIOR TO WATER PLAN APPROVAL.

NEVADA DEPARTMENT OF TRANSPORTATION (NDOT) PERMIT REQUIRED

AN APPROVED NDOT OCCUPANCY PERMIT SHALL BE OBTAINED THROUGH THE DISTRICT PRIOR TO ANY CONSTRUCTION WITHIN THE NDOT RIGHT-OF-WAY. PLANS SHOWING WORK IN NDOT RIGHT-OF-WAY MUST SHOW NDOT STATIONING. THE DEVELOPER ASSUMES ALL LIABILITY FOR WORK CONDUCTED UNDER THE DISTRICT OBTAINED PERMIT THROUGH WARRANTY EXPIRATION.

SEWER SCHEDULE

- | | | |
|--|--|--|
| 1. MH#1 48" TYP I CONC
STA 22+42.55
RIM = 1880.20
INV IN = 1873.68
EX. INV IN = 1873.48
INV OUT = 1873.48 | 5. MH#5 48" TYP I CONC
STA 15+90.22
RIM = 1885.75
INV IN = 1876.79
INV IN = 1876.79
INV OUT = 1876.59 | 9. MH#9 48" TYP I CONC
STA 10+04.22
RIM = 1885.90
INV IN = 1877.74
INV IN = 1877.74
INV OUT = 1877.54 |
| 2. MH#2 48" TYP I CONC
RIM = 1881.96
INV IN = 1874.37
INV OUT = 1874.17 | 6. MH#6 48" TYP I CONC
STA 12+61.97
RIM = 1885.75
INV IN = 1876.69
INV OUT = 1877.47 | 10. MH#10 48" TYP I CONC
STA 10+71.55
RIM = 1885.62
INV IN = 1876.69
INV OUT = 1876.48 |
| 3. MH#3 48" TYP I CONC
STA 13+18.81
RIM = 1883.74
INV IN = 1874.71
INV IN = 1874.71
INV OUT = 1874.51 | 7. MH#7 48" TYP I CONC
STA 10+04.22
RIM = 1887.50
INV IN = 1878.81
INV IN = 1878.81 | 11. MH#11 48" TYP I CONC
STA 9+89
RIM = 1885.22
INV IN = 1876.07
INV IN = 1876.07
INV OUT = 1875.87 |
| 4. MH#4 48" TYP I CONC
STA 13+29.99
RIM = 1883.70
INV IN = 1875.01
INV OUT = 1874.81 | 8. MH#8 48" TYP I CONC
STA 11+36.66
RIM = 1886.90
INV IN = 1876.61
INV OUT = 1876.72 | 12. MH#12 48" TYP I CONC
STA 10+04.45
RIM = 1886.28
INV IN = 1876.61
INV OUT = 1876.72 |

STORMDRAIN SCHEDULE

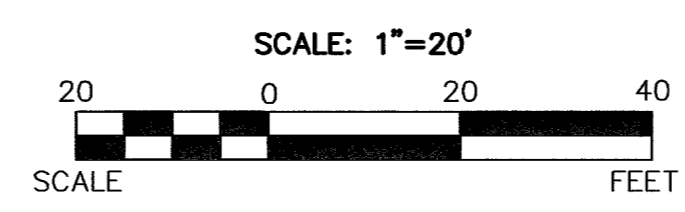
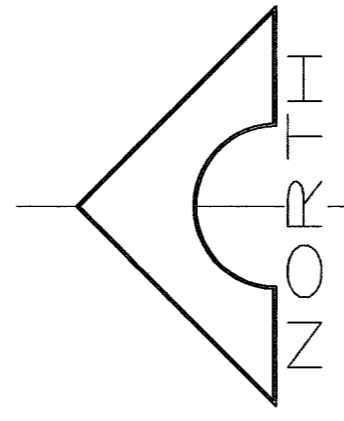
- | | |
|--|--|
| 1. PROP. 3'x3' DI
STA 13+12.16
RIM = 1883.59
INV OUT = 1881.64 | 7. PROP. 60" TYPE I SDMH
STA 12+24.17
RIM = 1885.95
INV IN = 1882.62
INV OUT = 1882.42
BOLT DOWN MH LID |
| 2. PROP. 3'x3' DI
STA 13+16.82
RIM = 1883.57
INV IN = 1881.61 | 8. PROP. 60" TYPE I SDMH
STA 10+51.07
RIM = 1887.05
INV IN = 1883.73
INV OUT = 1883.53
BOLT DOWN MH LID |
| 3. PROP. 60" TYPE III SDMH
STA 13+23.89
RIM = 1883.96
INV IN = 1881.00
INV IN = 1881.00
INV OUT = 1880.80
BOLT DOWN MH LID | 11. PROP. 60" TYPE III SDMH
STA 0+00
RIM = 1888.55
INV IN = 1884.26
INV IN = 1884.26
INV OUT = 1884.06 |
| 4. PROP. 60" TYPE III SDMH
STA 14+39.22
RIM = 1884.55
INV IN = 1881.68
INV IN = 1881.68
INV OUT = 1881.58
BOLT DOWN MH LID | 12. PROP. 15" MODIFIED
TYPE "CM" DI #12
STA 0+00
GRATE = 1888.55
INV OUT = 1884.40 |
| 5. PROP. 3'x3' DI
STA 11+51.36
RIM = 1885.25
INV OUT = 1881.95 | 13. PROP. 15" MODIFIED
TYPE "CM" DI #13
STA 0+00
GRATE = 1888.20
INV OUT = 1884.40 |

WATER MAIN JOINT DEFLECTION (PVC, 4"-24")

PVC PIPE SHALL BE DEFLECTED AT THE JOINT ONLY. THE MAXIMUM ALLOWABLE DEFLECTION SHALL BE ONE (1) DEGREE PER JOINT WITH A MINIMUM RADIUS OF CURVATURE OF 1,150 FEET, PER UDACS 2.06.02. FOR CHANGES IN DIRECTION EXCEEDING THE MAXIMUM ALLOWABLE JOINT DEFLECTION, FITTINGS SHALL BE USED.

GENERAL NOTES

- JPL ENGINEERING, INC. ASSUMES NO RESPONSIBILITY FOR EXISTING UTILITIES SHOWN OR NOT SHOWN. THE UTILITIES SHOWN ON THIS DRAWING HAVE BEEN PLOTTED FROM RECORD INFORMATION AND ARE FOR THE CONVENIENCE OF THE CONTRACTOR ONLY. IT IS THE CONTRACTOR'S RESPONSIBILITY TO FIELD VERIFY BOTH THE HORIZONTAL AND VERTICAL LOCATION OF ALL RELEVANT UTILITIES PRIOR TO COMMENCEMENT OF CONSTRUCTION. IF A CONFLICT OR DISCREPANCY IS DISCOVERED, THE CONTRACTOR SHALL NOTIFY THE ENGINEER IN WRITING IMMEDIATELY.
- ALL WATER FACILITIES CONSTRUCTION SHALL BE IN ACCORDANCE WITH THE UNIFORM DESIGN AND CONSTRUCTION STANDARDS FOR WATER DISTRIBUTION SYSTEMS (UDACS), LATEST EDITION.
- WATER AND SEWER SERVICE LATERALS SHALL BE INSTALLED A MINIMUM OF FOURTY-EIGHT (48) INCHES APART IN SEPARATE TRENCHES. WATER LATERALS SHALL BE A MINIMUM OF TWELVE (12) INCHES ABOVE THE SEWER LATERAL (REF. UNIFORM PLUMBING CODE)



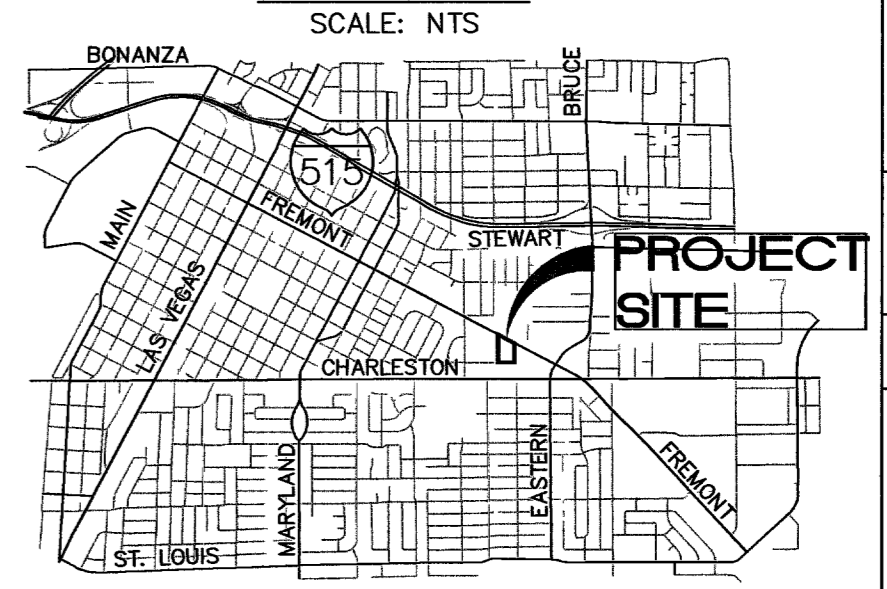
STREETLIGHT NOTES

- ◆ INSTALL 250W CENTENNIAL STANDARD LUMINAIRE PER DETAIL "A" SHEET "DT3".
- ◆ REMOVE AND RETURN EXISTING STREET LIGHT POLE/S TO CITY OF LAS VEGAS - YARDS AT 3104 E. BONANZA ROAD. CALL 24 HOURS BEFORE RETURNING AT 229-6331.
- ◆ INTERCEPT EXISTING STREET LIGHT CIRCUIT. INSTALL # 3 1/2 PULL BOX. AND PULL NEW CONDUCTORS TO NEW STREET LIGHT.
- ◆ INSTALL 2" CONDUIT WITH (4) #4 AND (1) #8 THW WIRE.
- ◆ INSTALL 150W STREET LIGHT AND FOUNDATION PER CCAUSD 314, 320 AND 321
- ◆ INSTALL 1 1/2" STREET LIGHT CONDUIT.
- ◆ CONTRACTOR TO REMOVE EXISTING STREETLIGHT POLE AND REPLACE WITH HANDHOLE POLE PER CCAUSD 314 AND MODIFY EXISTING STREETLIGHT FOUNDATION FOR CONNECTION OF NEW UNDERGROUND CONDUIT PER CCAUSD 325.

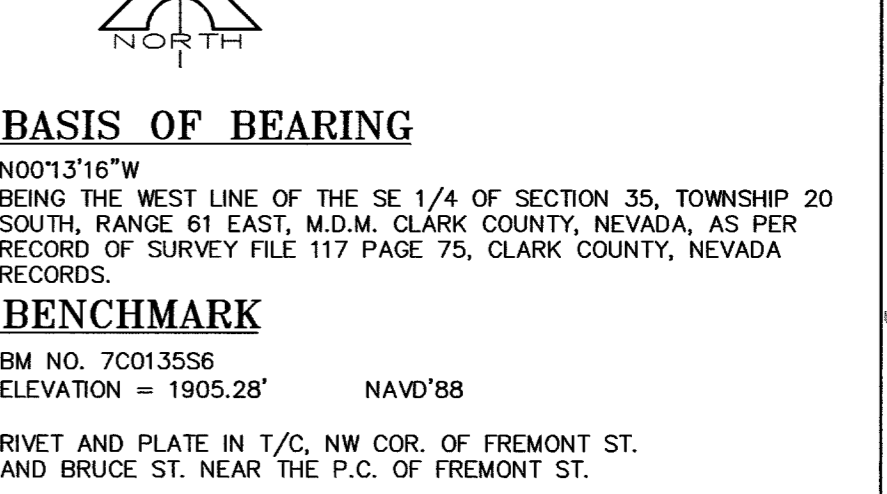
SEWER NOTES

- 1. INSTALL 48" SEWER MANHOLE PER UDACS PLATE # SD-1
- 2. INSTALL 8" PVC PER CCWRD STD DWG SD-16A
- 3. INSTALL 4" SEWER LATERAL PER CCWRD STD DWG SD-17

KEY MAP



VICINITY MAP

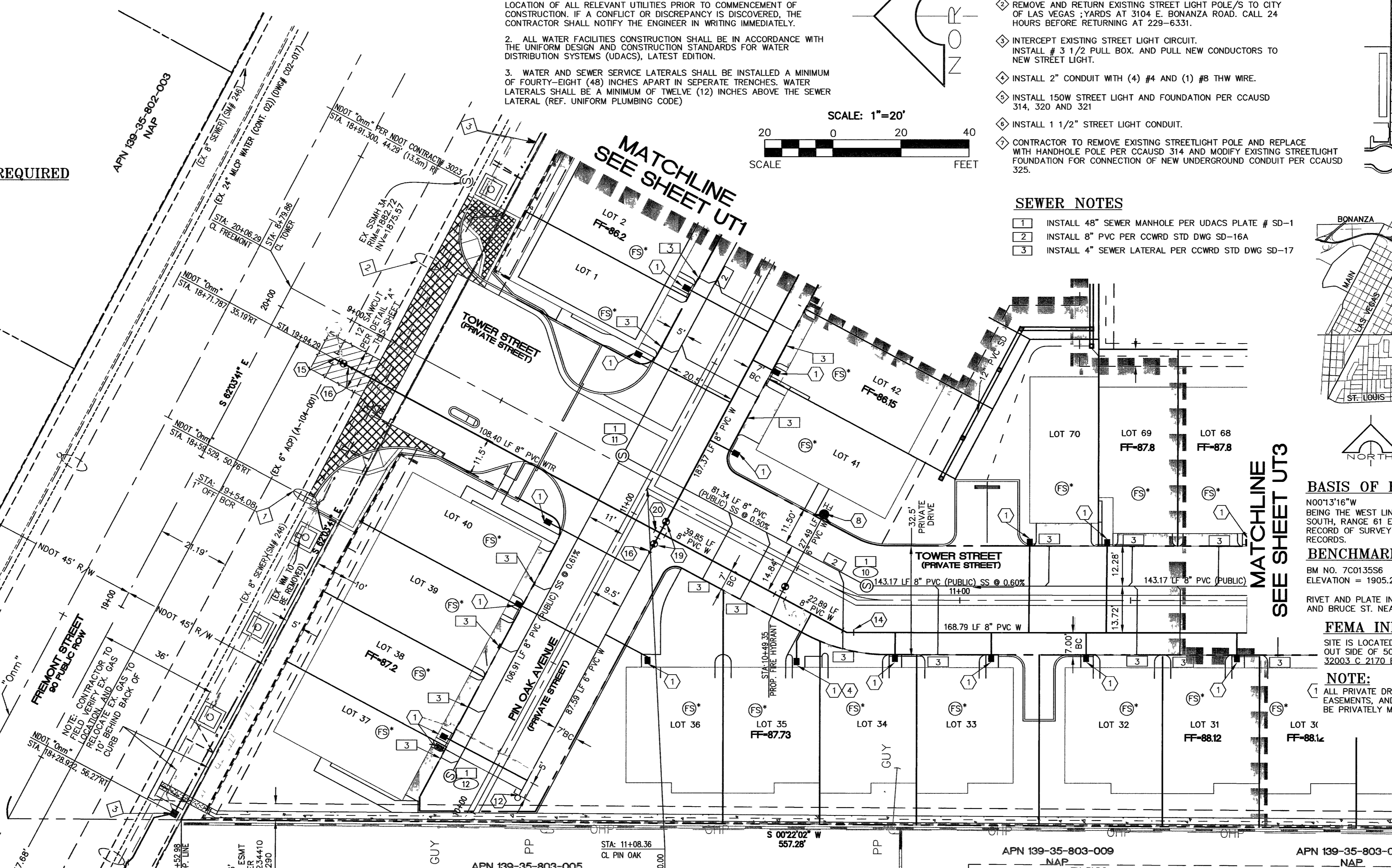


BASIS OF BEARING
N00°13'16" W
BEING THE WEST LINE OF THE SE 1/4 OF SECTION 35, TOWNSHIP 20 SOUTH, RANGE 61 EAST, M.D.M. CLARK COUNTY, NEVADA, AS PER RECORD OF SURVEY FILE 117 PAGE 75, CLARK COUNTY, NEVADA RECORDS.

BENCHMARK
BM NO. 70013558
ELEVATION = 1905.28' NAVD'88

FEMA INFORMATION
SITE IS LOCATED IN ZONE "X", AREA DETERMINED TO BE OUTSIDE OF 500 YEAR FLOOD ZONE PER FIRM MAP NO. 32003.C.2170.E EFFECTIVE SEPT. 27, 2002.

NOTE:
1. ALL PRIVATE DRIVES ARE P.U.E., PUBLIC SEWER EASEMENTS, AND PUBLIC DRAINAGE EASEMENTS TO BE PRIVATELY MAINTAINED BY HOA



METHOD OF PATCHING ROADWAY WHERE TRENCHING IS NECESSARY FOR UTILITY OR OTHER INSTALLATIONS

3/4" (SEE NOTE 1)

TOP OF FINISH GRADE (SEE NOTE 2)

18" MIN (SEE NOTE 5)

4" (SEE NOTE 3)

5" MIN (SEE NOTE 4)

VARIES (SEE NOTE 4)

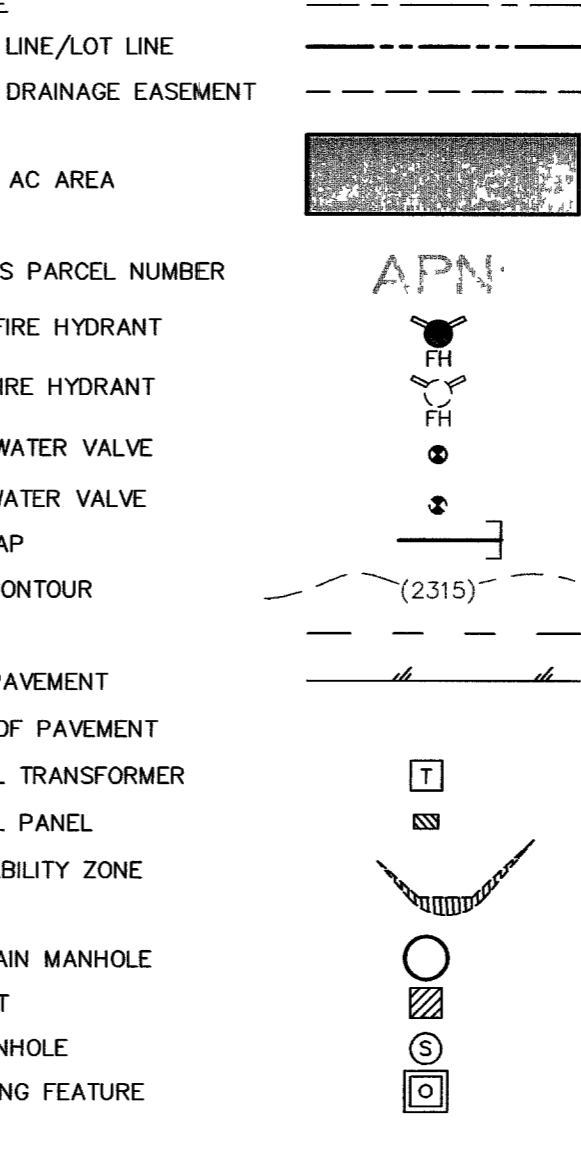
12" MAX 12" MAX 32"

FS FIRE SPRINKLER SYSTEM SHALL BE PLUMBED TO MASTER TOILET. NO EXCEPTIONS ALLOWED

WATER NOTES

- INSTALL 1" WATER SERVICE W/1" MWR METER AND METER BOX PER UDACS PLATE 1D. (HERSHEY MVR 30 OR APPROVED EQUAL) 18" SEPARATION BETWEEN ALL SERVICE CONNECTIONS (TYPICAL) INSTALL ALL SERVICES PERPENDICULAR TO MAIN
- INSTALL WATERMAIN CROSSING PER UDACS PLATE 15 & 16
- INSTALL 3/4" RR. METER WITH 1" RPPA, 1" COPPER SERVICE SERVICE SADDLE PER UDACS PLATES 1D AND 11A. ANGLE METER STOP REQUIRED BEFORE & AFTER THE METER.
- SERVICE LATERALS NOT INSTALLED 90° FROM THE WATER MAIN, LOCATOR TAPE SHALL BE ATTACHED TO THE LATERAL AND TERMINATE IN THE METER BOX.
- INSTALL 8"x11" SERVICE SADDLE
- INSTALL 1" 90° BEND PER UDACS PLATE 5
- INSTALL 6" 90° BEND PER UDACS PLATE 5
- INSTALL FIRE HYDRANT ASSEMBLY COMPLETE WITH 6"x6" TEE, " " 6" GATE VALVE PER UDACS PLATE #7
- INSTALL 6"x6" TEE W/THRUST BLOCKS PER U.D.A.C.S. PLATE #5
- INSTALL 6" CAP AND 2" BLOWOFF PER UDACS PLATE 4A
- INSTALL 8" 45° BEND PER UDACS PLATE 5
- INSTALL 8" 22.5° BEND PER UDACS PLATE 5
- INSTALL 6"x6" MECHANICAL JOINT TAPPING SLEEVE WITH 6" TAPPING VALVE PER UDACS PLATE NO. 22
- INSTALL 8"x6" REDUCER PER UDACS PLATE 3
- 8"x6"x8" TEE W/THRUST BLOCKS PER U.D.A.C.S. PLATE 5
- INSTALL 8"x8" MECHANICAL JOINT TAPPING SLEEVE W/ 8" TAPPING VALVE PER UDACS PLT 22
- INSTALL 8" GATE VALVE PER UDACS PLATE 3 & 8
- INSTALL 8" X 8" CROSS PER UDACS PLATE 5
- INSTALL 6" GATE VALVE PER UDACS PLATE 3 & 8
- INSTALL 8" 90° BEND PER UDACS PLATE 5
- TRENCH AND BACKFILL IN PAVED AREAS PER CCAUSD #503

LEGEND



CITY OF LAS VEGAS FIRE DEPARTMENT

FIRE FLOW REQUIREMENT IS 1,500 GPM AT 20 POUNDS PER SQUARE INCH RESIDUAL BASED ON :

LARGEST AREA BETWEEN 4 HOUR SEPARATION WALLS	2,002 SF
BUILDING HEIGHT	35 FEET
NUMBER OF STORIES	3 STORIES
TYPE OF CONSTRUCTION	II-ONE HOUR
OCCUPANCE	SINGLE FAMILY
FULL AUTOMATIC SPRINKLER SYSTEM:	YES

APPROVALS

REVIEWED BY: *[Signature]* DATE: 1/20/07

APPROVAL BY THE FIRE DEPARTMENT HAVING JURISDICTION IS REQUIRED PRIOR TO OBTAINING FINAL APPROVAL FROM THE LVVWD

ANY BLOCK WALL OR OTHER FENCE MATERIAL SHALL BE DESIGNED AND CONSTRUCTION AROUND THE OUTSIDE OF THE EASEMENT, SO AS TO ALLOW THE DISTRICT ACCESS FROM THE ADJACENT RIGHT-OF-WAY

[Signature] DATE: 3/28/07

LAS VEGAS VALLEY WATER DISTRICT PROJECT NO 116670

Call before you Dig.

1-702-455-7511

1-702-229-6611

LAS VEGAS AREA COMPUTERIZED TRAFFIC SYSTEM

Call before you Dig.

1-800-227-2600

UNDERGROUND SERVICE (USA)

JPL ENGINEERING INC.

8620 South Eastern Avenue Suite 8
Las Vegas, NV 89123
phone (702) 898-6269 * fax (702) 898-0647

URBAN LOFTS X, LTD

FREMONT STREET LOFT HOMES

UTILITY PLAN II

NOVEMBER 2006

APPROVALS

[Signature] DATE: 11/16/06

JOB #05047

SHEET NO

UT2

11 OF 24

18744945